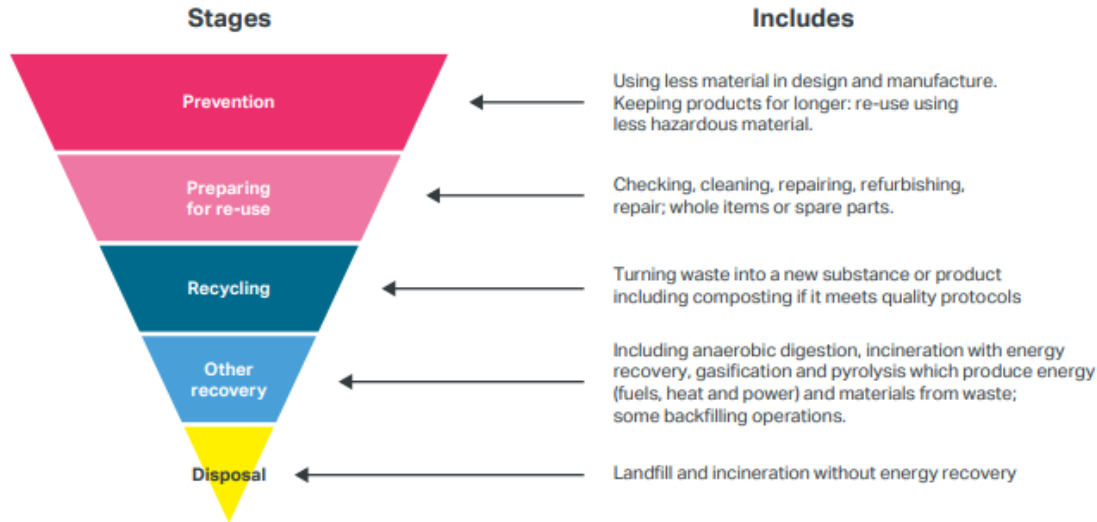


Draft SPD Consultation: Waste management in high density development

Dan Epstein – Principal Sustainability Officer

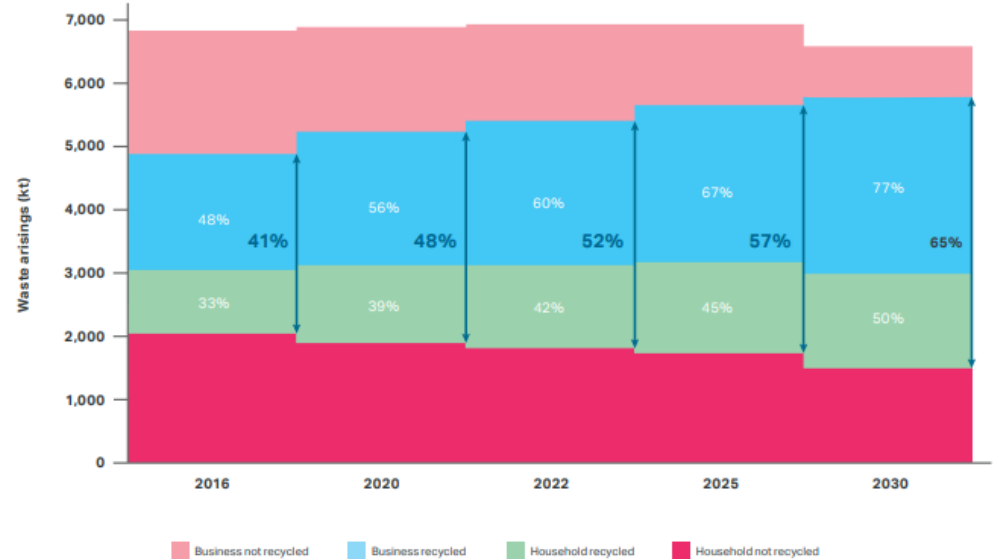
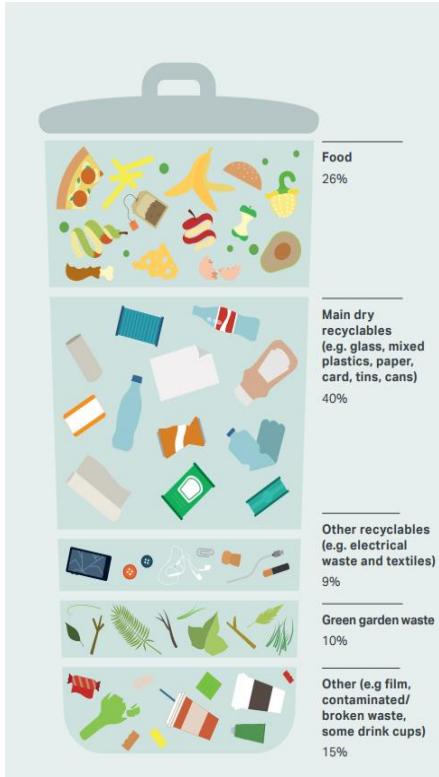
Transition to a low waste economy

- The Mayor of London is championing new waste recycling standards for London through adoption of the waste hierarchy



MAYOR OF LONDON

Mayor of London target is to recycle 65% of municipal waste

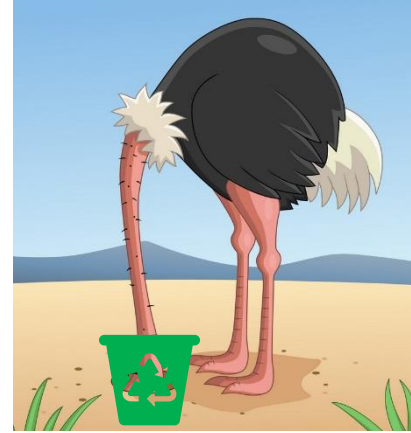


MAYOR OF LONDON

Challenges

OPDC
OLD OAK AND
PARK ROYAL
DEVELOPMENT
CORPORATION

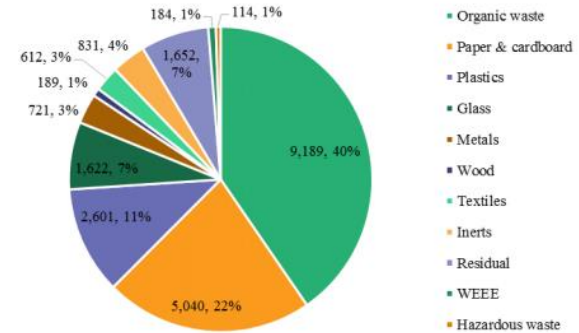
- Recycling rates in flats is low - 20%
- Lack of space in homes
- Poorly designed, located and maintained bin stores
- Confusion among residents about recycling
- Individual responsibility
- Poor management of facilities
- Difficult access to bin stores by waste collectors
- Poor coordination between developer and Waste Collection Authority
- Multiple waste streams (commercial and residential)



MAYOR OF LONDON

Why are we producing an SPD?

- OPDC Waste in Tall Buildings Study contains information too detailed for a Local Plan
- SPD will enable this detail to be embedded within supplementary guidance to shape development and support successful planning applications
- Enables OPDC to meet the Mayor's aspirations for functional bodies to lead in delivering guidance in the London Environment Strategy



The OPDC area will generate circa 22,755 tonnes of waste per annum

Partner engagement



SPD developed in consultation with key partners

- Early collaboration with London Waste and Recycling Board and GLA
- Local waste collection authorities
- Environment Agency



MAYOR OF LONDON

What does the SPD say?



- **Coordinate:** single approach across whole OPDC area working with local waste collection authorities
- **Design:** start early; integrate; 3 waste streams; space; accessible (30m horizontal distance/10m from collection point); visibility
- **Engage:** signage; induction; training and information
- **Innovate:**
 - Plant (shredders, compactors)
 - Sensors, controls and access
 - CCTV
 - Measures and reporting
- **Manage:** long term approach; adaptable

Potential solutions

- Space in kitchens and bathrooms
- Chutes or intermediate collection
- Signage

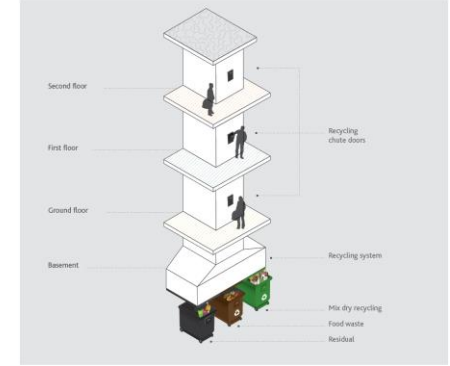
Recycling points for Aberdeen University Hillhead Halls



Recycling points for Aberdeen University Crombie Johnston Halls



Gravity Chute System:

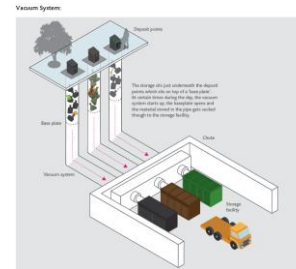
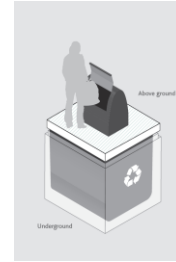
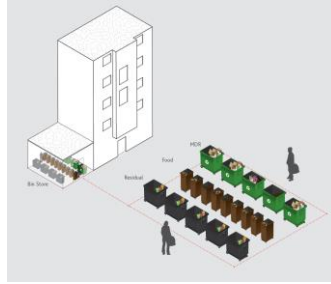


MAYOR OF LONDON

Collection: Alternative solutions

Waste collection systems:

- Conventional
- Underground
- Pneumatic

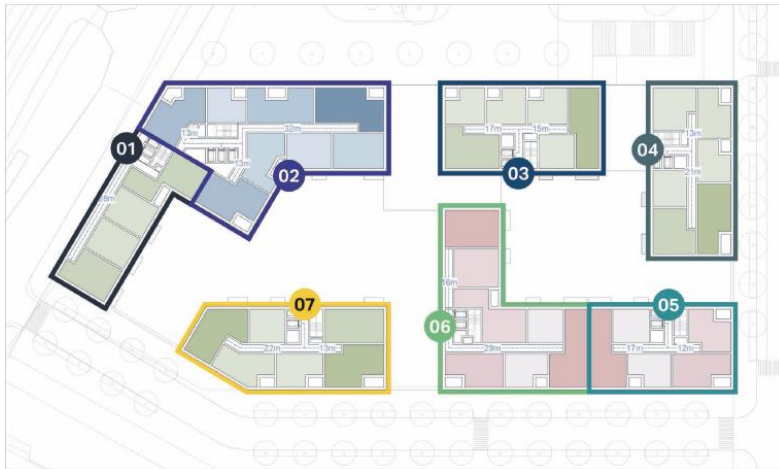


Example

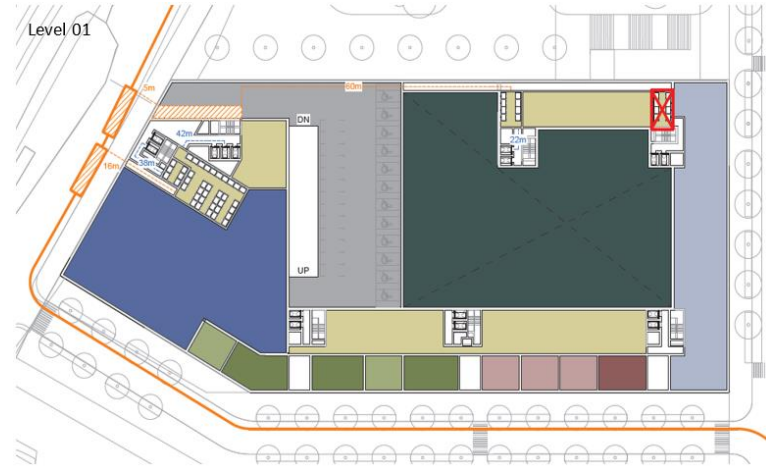
OPDC
OLD OAK AND
PARK ROYAL
DEVELOPMENT
CORPORATION

- Distance
- Intermediate chutes
- Facilities management

Distance from flat to core

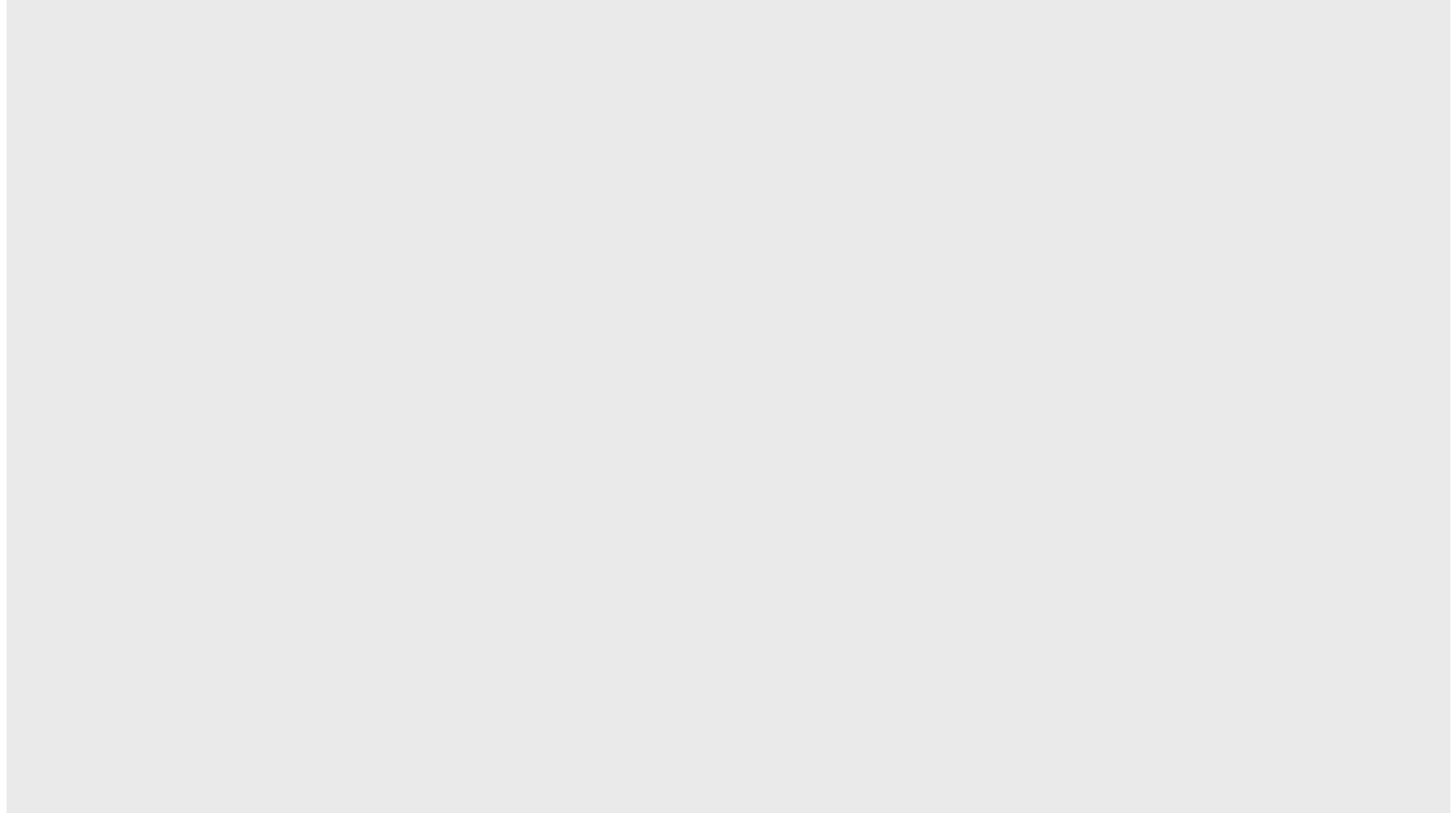


Distance from core to collection store



MAYOR OF LONDON

The circular economy and waste



Next steps



- Public consultation from **10 January – 22nd February 2019**
- Final draft SPD **summer 2019**
- Adopt following adoption of Local Plan

MAYOR OF LONDON