

M O P A C

MAYOR OF LONDON

OFFICE FOR POLICING AND CRIME

M O P A C

MAYOR OF LONDON

OFFICE FOR POLICING AND CRIME

Stops and Searches Monitoring Mechanism training

M O P A C

MAYOR OF LONDON

OFFICE FOR POLICING AND CRIME

Today's session...

- Data available
- Finding the Stops & Searches Monitoring Mechanism
- Glossary of key terms
- Calculations
- Reading and interpreting the data
- Further sources of information

What data is available?

Stops and Searches Monitoring Mechanism

- Volume of stops and searches and stops and accounts
- Stops and searches by reason
- Arrest rates from searches
- Ethnic appearance of people stopped, searched and arrested
- Ethnic appearance of people searched as a disproportionality ratio
- Self defined ethnicity of people stopped and held to account as a disproportionality ratio
- Searches by age group
- Arrest reason compared to search reason
- % arrest rate, % weapons searches, % key crime searches
- By borough (32 x individual borough reports) and force
- Updated monthly

Other data...

- A 5090 form dip sample summary (stops and searches with reason for stops and outcomes)
- Multiple stops on a person

Where the data is collected – a 5090 form

METROPOLITAN POLICE SERVICE **Form 5090**

STOP/SEARCH RECORD: **Person / Vehicle** (delete as applicable)

Family name* _____

First Name(s)* _____
*(if name not given, use space to give a description)

Gender M F DoB A/Age _____

EA Code SDE Code Height _____

Address _____

Post Code

Vehicle Type _____ VRM _____

Search Grounds _____

Stop/Search **Search (if different location)**

Date

Time At police station
(tick box)

Loc'n _____

BOCU Code BOCU Code

Search Code Outcome Code Arrest Code

Searching/Stopping Officer _____

Warrant/Pay No. B(OCU) _____ Team/Unit _____

MP 672/11 **Police copy**

CrimInt Plus Ref. No.

Details of Other Officers Present:

ECM 5 key outcomes considered *(Any ECM issues to be reported on Merlin)*

Supervisor's Signature _____

Warrant No.

M O P A C

MAYOR OF LONDON
 OFFICE FOR POLICING AND CRIME

Finding the Stops & Searches Monitoring Mechanism

Type the following address into the address bar on your internet browser

www.met.police.uk/foi/units/stop_and_search.htm

METROPOLITAN POLICE TOTAL POLICING

Home | Your Borough | Contact Us | News & Appeals | About Us | Advice | Careers

Home > MPS Publication Scheme

We use cookies to help us understand how people use our website. The cookie settings on this website are set to 'allow cookies'. If you want to opt out, select no and we won't track your future usage. Are you happy for us to track your usage?

MPS Publication Scheme

MPS Stop and Search

What our priorities are and how we are doing

Stop and Search MPS Key Performance Indicator Progress Report

Title	Size	Summary	Format	Cost
September 2013	25kb	Stop and Search Key Performance Indicator Progress Report	Online	Free
August 2013	35kb	Stop and Search Key Performance Indicator Progress Report	Online	Free

Stop and Search Monitoring Reports

Title	Size	Summary	Format	Cost
October 2013	176kb	Stop and Search Monitoring Mechanism	Online	Free
September 2013	147kb	Stop and Search Monitoring Mechanism	Online	Free

Borough Monitoring Reports

- Barking and Dagenham Stop and Search Monitoring Report October 2013
- Barnet Stop and Search Monitoring Report October 2013
- Bexley Stop and Search Monitoring Report October 2013
- Brent Stop and Search Monitoring Report October 2013
- Bromley Stop and Search Monitoring Report October 2013
- Camden Stop and Search Monitoring Report October 2013
- City of Westminster Stop and Search Monitoring Report October 2013
- Croydon Stop and Search Monitoring Report October 2013

Information Classes

Borough level
Please select a borough

- Corporate level
- Information classes
- Disclosure Log

MPS Publication Scheme

- Home
- Introduction
- What's new
- Contact us
- A-Z index
- Glossary
- Links

- Stops and Searches Monitoring Mechanism
- Force level report
- Most recent and previous month report

- Stops and Searches Monitoring Mechanism
- 32 x individual borough level reports
- Most recent month and previous month report

MOPAC

MAYOR OF LONDON
OFFICE FOR POLICING AND CRIME

Finding the Stops & Searches Monitoring Mechanism



Stop and Search Borough Equality Impact Assessment

- Stop and Search Equality Impact Assessment Barking and Dagenham
- Stop and Search Equality Impact Assessment Barnet
- Stop and Search Equality Impact Assessment Bexley
- Stop and Search Equality Impact Assessment Brent
- Stop and Search Equality Impact Assessment Bromley
- Stop and Search Equality Impact Assessment Camden
- Stop and Search Equality Impact Assessment City of Westminster
- Stop and Search Equality Impact Assessment Croydon
- Stop and Search Equality Impact Assessment Ealing
- Stop and Search Equality Impact Assessment Enfield
- Stop and Search Equality Impact Assessment Greenwich
- Stop and Search Equality Impact Assessment Hackney
- Stop and Search Equality Impact Assessment Hammersmith and Fulham
- Stop and Search Equality Impact Assessment Haringey
- Stop and Search Equality Impact Assessment Havering
- Stop and Search Equality Impact Assessment Harrow
- Stop and Search Equality Impact Assessment Heathrow
- Stop and Search Equality Impact Assessment Hillingdon
- Stop and Search Equality Impact Assessment Hounslow
- Stop and Search Equality Impact Assessment Islington
- Stop and Search Equality Impact Assessment Kensington and Chelsea
- Stop and Search Equality Impact Assessment Kingston-upon-Thames
- Stop and Search Equality Impact Assessment Lambeth
- Stop and Search Equality Impact Assessment Lewisham
- Stop and Search Equality Impact Assessment Merton
- Stop and Search Equality Impact Assessment Newham
- Stop and Search Equality Impact Assessment Redbridge
- Stop and Search Equality Impact Assessment Richmond-upon-Thames
- Stop and Search Equality Impact Assessment Southwark
- Stop and Search Equality Impact Assessment Sutton
- Stop and Search Equality Impact Assessment Tower Hamlets
- Stop and Search Equality Impact Assessment Waltham Forest
- Stop and Search Equality Impact Assessment Wandsworth

Our policies and procedures

Title	Size	Summary	Format	Cost
Stop and Searches Policy Impact Assessment		These documents outline the principles that must be applied to all interactions carried out under 'Stop & Account' and 'Searches prior to arrest' powers.	Online	Free
General Stop and Search - Supervisor Checklist	61kb	General Stop and Search - Supervisor Checklist	Online	Free
S90 Authorising Officer - Checklist	66kb	Stop and Search - S90 Authorising Officer - Checklist	Online	Free
S90 Superintendent's Checklist	60kb	Stop and Search - S90 Superintendent's Checklist	Online	Free
S90 Briefing - Checklist	61kb	Stop and Search S90 Briefing - Checklist	Online	Free
(B)OCU SLT Lead - Checklist	69kb	Stop and Search - (B)OCU SLT Lead - Checklist	Online	Free
Form 5090 Supervisor Checklist	60kb	Stop and Search - Form 5090 Supervisor Checklist	Online	Free
Frontline Checklist	78kb	Stop and Search - Frontline Checklist	Online	Free
S1 PACE flowchart	61kb	Stop and Search - S1 PACE flowchart	Online	Free

- Stop and Search Borough Equality Impact Assessment
- 32 x individual borough level reports

MPS policies and procedures including:

- General S&S supervisor checklist
- 5090 supervisor checklist
- Borough SLT lead checklist
- Frontline checklist
- Flowcharts
- Q & A
- Various documents detailing Section 60 authorisation process


MOPAC

MAYOR OF LONDON
OFFICE FOR POLICING AND CRIME

Stops and Searches Monitoring Mechanism

February 2014 ←

Month that data reports to

Report Title	PD 339 Stops and Searches Monitoring Mechanism
Version	5.3
Protective Marking	Not Protectively Marked
Publication Scheme (Y/N)	Y
Summary	MPS Stop and Search Monitoring Report
Key Words	Stop, Account, Search
Date of Stop Search Data Extract	13 March 2014 ←
Report Relevant to;	Ops Manager 
Review Date	April 2014
Date Last Printed	13 Mar 2014 09:32
General Information	MPS Stop and Searches Team Tel: 0207 161 0967 Email: StopsandSearches-TPHQ@met.police.uk

Date that data was extracted

Glossary of terms

- **Stop and Account** – Where an officer requests a person in a public place to account for their actions, their behaviour, their presence in an area or their possession of anything.
- **Stop and Search** – When a police officer stops a member of the public and searches them. The police can only detain members of the public in order to carry out a search when certain conditions have been met. Search powers fall under different areas of legislation which include searching for: stolen property, prohibited articles (offensive weapons, anything used for burglary, theft deception or criminal damage), drugs or guns.
- Historically, searches of unattended vehicles and vessels have made up a very low proportion of search activity.

Glossary of terms

- **Police and Criminal Evidence Act 1984 (PACE)** - provides the core framework of police powers and safeguards around stop and search, arrest, detention, investigation, identification and interviewing detainees. It sets out to strike the right balance between the powers of the police and the rights and freedoms of the public. Maintaining that balance is a key element of PACE. **Section 1** sets out the power of a constable to stop and search persons, vehicles etc.
- PACE sets out the various principles governing stop and search including:
 - The primary purpose of stop and search powers is to enable officers to allay or confirm suspicions about individuals without exercising their power of arrest.
 - An officer must not search a person, even with his or her consent, where no power to search is applicable.
 - Reasonable grounds for suspicion depend on the circumstances in each case. There must be an objective basis for that suspicion based on facts, information, and/or intelligence which are relevant to the likelihood of finding an article of a certain kind. Reasonable suspicion can never be supported on the basis of personal factors, generalisations or stereotypical images.

Glossary of terms

- **Section 60 Criminal Justice & Public Order Act 1994 (s60)** – where an authorising officer reasonably believes that serious violence may take place or that persons are carrying dangerous instruments or offensive weapons without good reason they may authorise powers for officers in uniform to stop and search any person or vehicle within a defined area and time period.
- **Section 43 & 44 Terrorism Act** – powers for officers to stop and search anyone in a designated area without reasonable suspicion were **removed by the MPS on 8 July 2010**. Officers may use Section 43 powers which require reasonable suspicion in order to carry out the stop and search.
- **“StopIt” approach** - introduced by the MPS in January 2012, “StopIt” aims to focus stop and search on tackling serious violence and using the power in a more intelligence-led and targeted way.

Calculations

- **Arrest rate** – the number of arrests resulting from stops and searches divided by the total number of stops and searches. This is often presented as a percentage.
 - e.g. $121 \text{ (arrests)} / 1005 \text{ (searches)}$
 $\times 100 = 12.0\% \text{ (arrest rate)}$
- **Per 1,000 population** – the number of stops and searches divided by total population multiplied by 1,000 to show a rate which is a more suitable denominator for comparison.
 - e.g. $600 \text{ (searches)} / 166,058 \text{ (total population)}$
 $\times 1,000 = 3.61 \text{ searches per 1,000 population}$
- **Disproportionality ratio** - Disproportionality is the term used to explain the difference in the number of searches made on different groups relative to the size of the respective population base.

Disproportionality is calculated from stop and search and population data. For example:

The number of black stops and searches / the black population in thousands (the black stop and search rate per 1,000)
divided by

The number of white stops and searches / by the white population in thousands (the white stop and search rate per 1,000)

OR

The number of black stops and searches / number of white stops and searches multiplied by the white population / black population

M O P A C

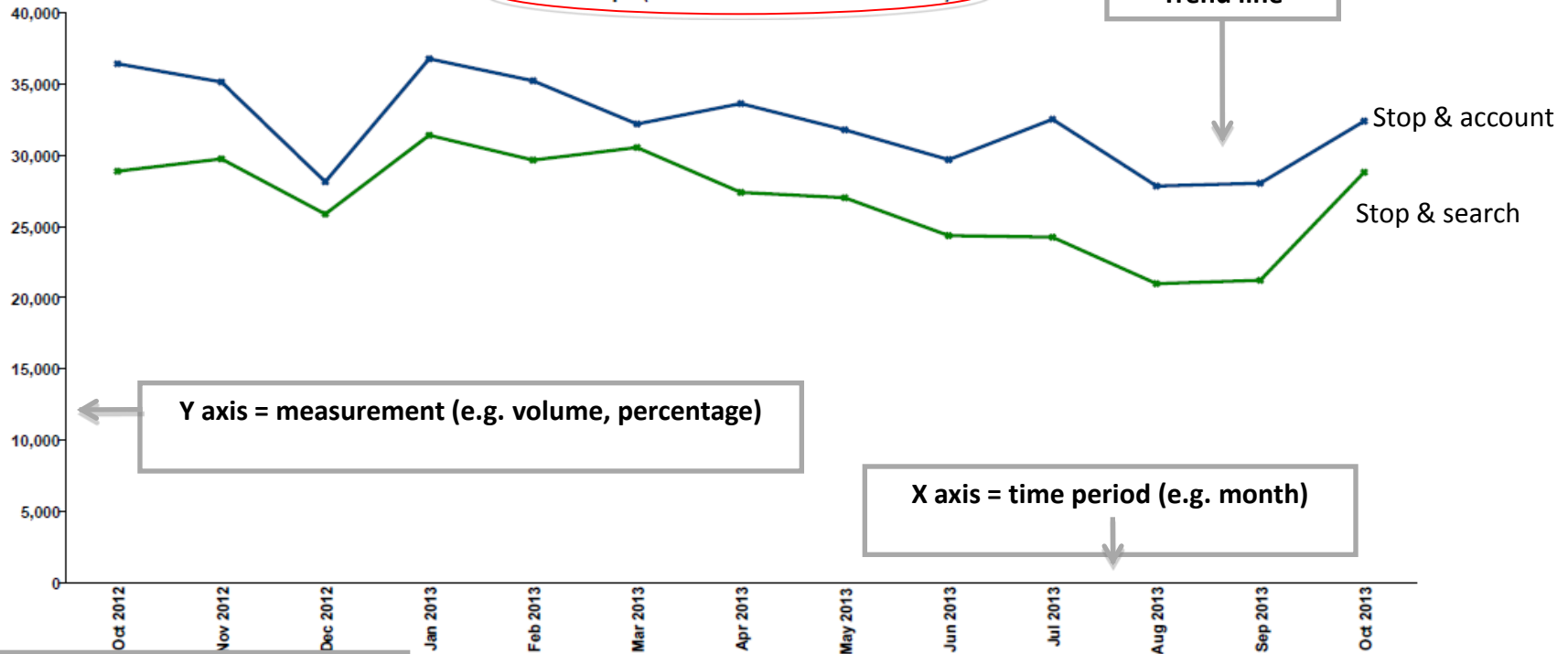
MAYOR OF LONDON
OFFICE FOR POLICING AND CRIME

How do the trend lines in your borough compare to London as a whole?

All Searches & Stop and Account* excluding s.60

No of Stops (Inclusive of Vehicles / Vessels)

Trend line



Legend (what the trend lines are telling you)

— PACE and Other S&S — Stop and Account

Totals include searches of unattended vehicles / vessels as well as persons

MPS	2012			2013									
	Oct	Nov	Dec	Jan	Feb	Mar	Apr	May	Jun	Jul	Aug	Sep	Oct
PACE and Other S&S	28,888	29,753	25,876	31,415	29,668	30,552	27,399	27,022	24,364	24,249	20,987	21,223	28,810
Stop and Account	36,436	35,155	28,144	36,785	35,238	32,205	33,639	31,796	29,694	32,535	27,844	28,045	32,404

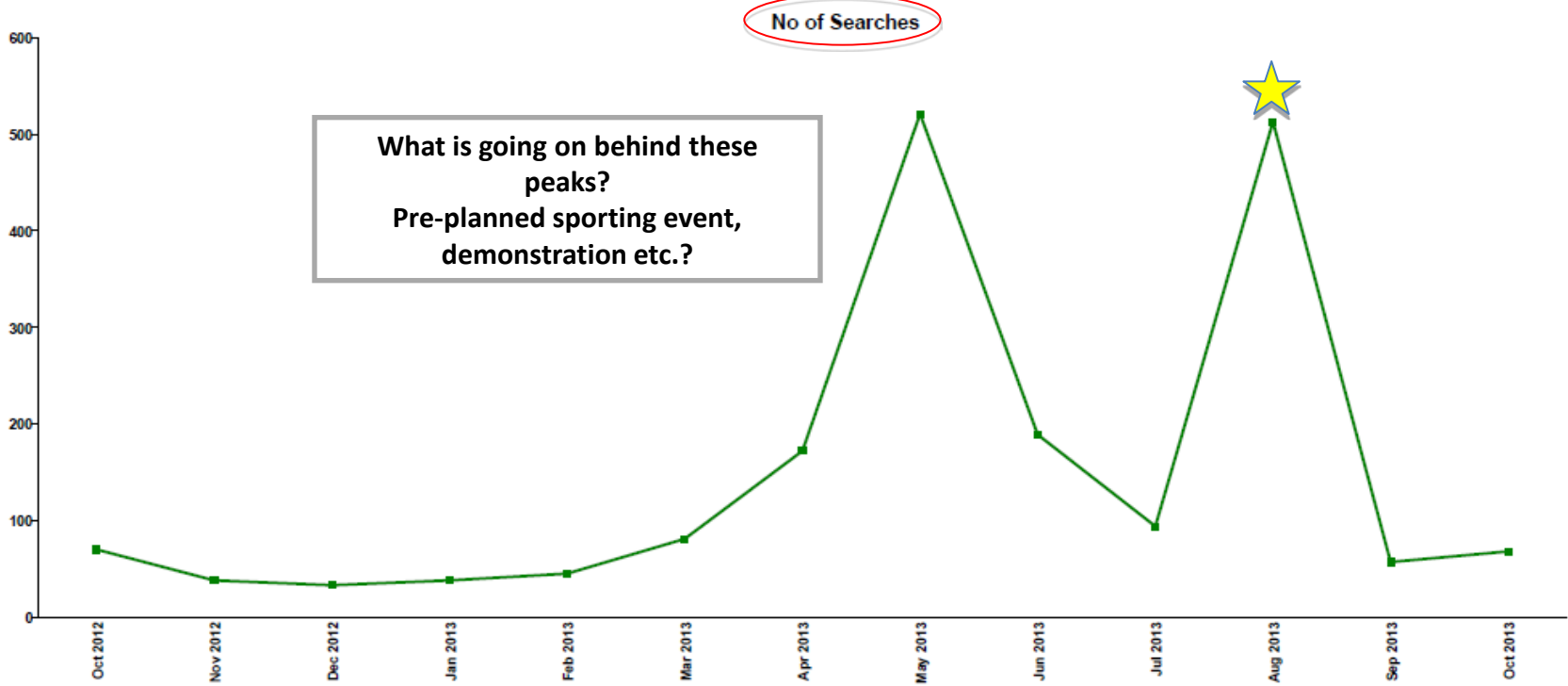
*See Glossary

Raw data included in graph

MOPAC

MAYOR OF LONDON
OFFICE FOR POLICING AND CRIME

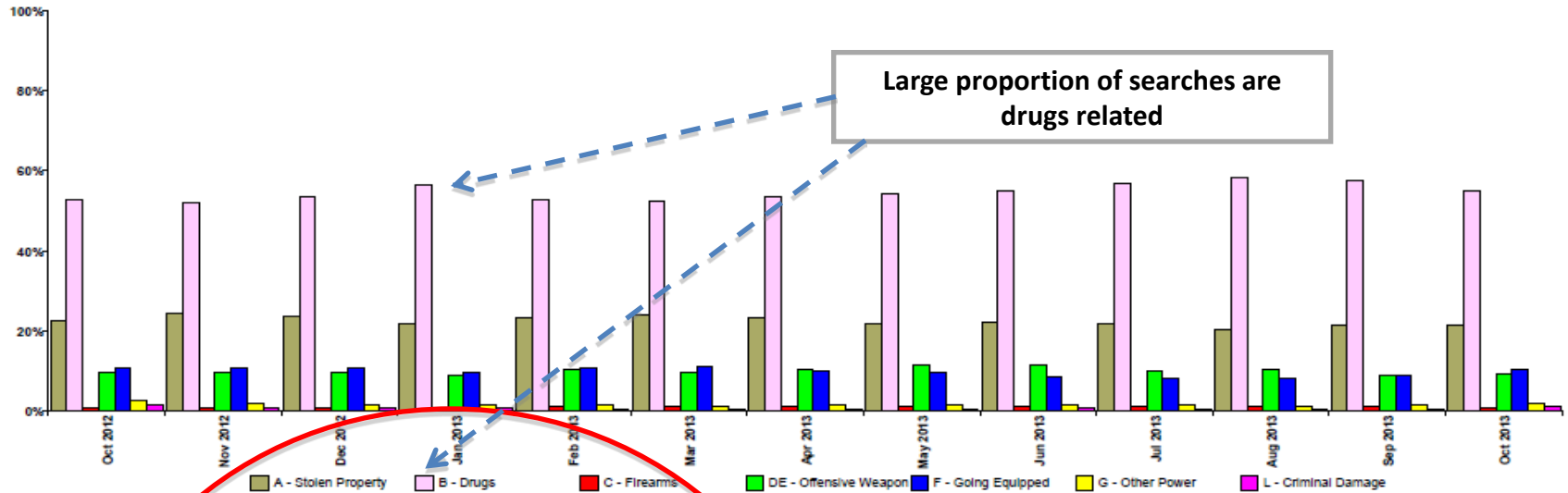
Number of Persons Searched **under s.60 Authority**



Totals include searches of unattended vehicles / vessels as well as persons

MPS	2012			2013									
	Oct	Nov	Dec	Jan	Feb	Mar	Apr	May	Jun	Jul	Aug	Sep	Oct
S60	70	38	33	38	45	81	172	521	189	94	513	57	68

MPS - Stop & Searches by Reason (excluding s.60)



Reason for Stop and Search, Excludes Vehicle only searches
MPS
A - Stop & Search for Stolen Property
B - Drugs (s23 Misuse of Drugs Act)
C - Firearms (s47 Firearms Act)
DE - Offensive Weapons
F - Going equipped (s1 PACE)
G - Other Power (see Annex A of Code A)
L - Criminal Damage
Total: Number of Searches
Weapons Searches and % of all searches
Key Crime Searches and % of all Searches
*Weapons search target is 20% of all Searches

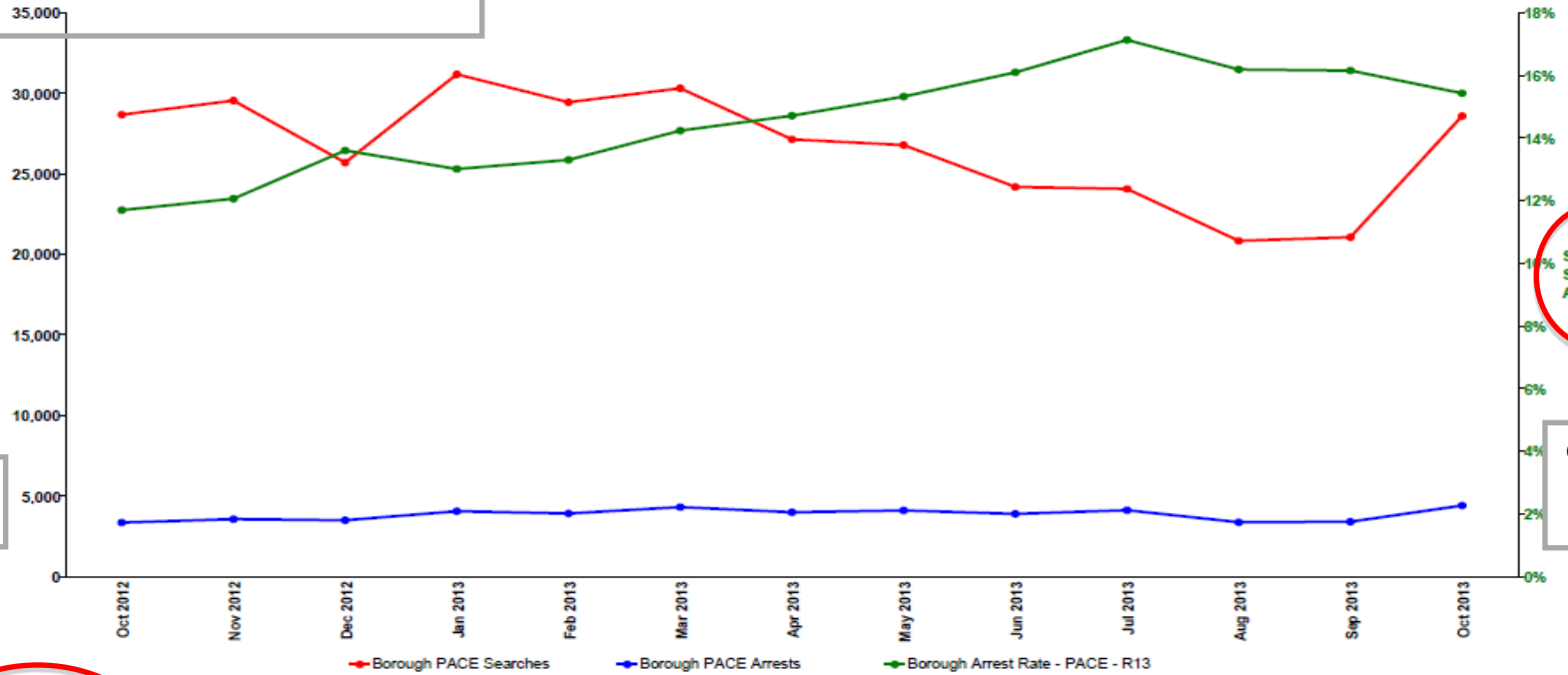
Reason for Stop and Search, Excludes Vehicle only searches	Oct	
	%	No.
A - Stop & Search for Stolen Property (s1 PACE)	22.4 %	6,418
B - Drugs (s23 Misuse of Drugs Act)	52.6 %	15,077
C - Firearms (s47 Firearms Act)	0.8 %	227
DE - Offensive Weapons	9.5 %	2,727
F - Going equipped (s1 PACE)	10.6 %	3,052
G - Other Power (see Annex A of Code A)	2.6 %	745
L - Criminal Damage	1.5 %	418
Total: Number of Searches		28,882

2015																
	Mar		Apr		May		Jun		Jul		Aug		Sep		Oct	
	%	No.	%	No.	%	No.	%	No.	%	No.	%	No.	%	No.	%	No.
A - Stop & Search for Stolen Property (s1 PACE)	23.9 %	7,241	23.3 %	6,326	21.9 %	5,854	22.2 %	5,359	21.7 %	5,220	20.3 %	4,221	21.4 %	4,498	21.5 %	6,150
B - Drugs (s23 Misuse of Drugs Act)	52.4 %	15,879	53.4 %	14,462	54.1 %	14,489	54.9 %	13,266	56.7 %	13,844	56.1 %	12,106	57.5 %	12,107	55.0 %	15,723
C - Firearms (s47 Firearms Act)	1.0 %	277	1.0 %	260	1.0 %	260	1.0 %	260	1.0 %	260	1.0 %	260	1.0 %	260	1.0 %	260
DE - Offensive Weapons	9.8 %	2,918	10.4 %	2,818	11.5 %	3,052	11.2 %	3,388	9.9 %	2,878	9.5 %	2,727	11.2 %	3,278	1.6 %	438
F - Going equipped (s1 PACE)	11.2 %	3,388	9.9 %	2,878	9.5 %	2,727	10.7 %	3,049	11.3 %	3,078	12.5 %	3,541	12.3 %	2,969	11.0 %	2,858
G - Other Power (see Annex A of Code A)	1.2 %	378	1.6 %	438	1.5 %	418	1.2 %	378	0.8 %	227	2.6 %	745	1.5 %	418	35.6 %	10,794
L - Criminal Damage	0.6 %	169	0.4 %	116	0.6 %	169	0.6 %	169	0.6 %	169	0.6 %	169	0.6 %	169	0.6 %	169
Total: Number of Searches		30,238		27,128		26,774		24,178		24,068		20,837		21,058		28,678
Weapons Searches and % of all searches	10.7 %	3,049	11.3 %	3,078	12.5 %	3,541	12.3 %	2,969	11.0 %	2,858	11.7 %	2,428	10.1 %	2,131	9.9 %	2,821
Key Crime Searches and % of all Searches	35.6 %	10,794	33.6 %	9,120	31.9 %	8,551	31.3 %	7,565	30.8 %	7,356	29.0 %	6,051	30.9 %	6,498	33.0 %	9,444

Do stop and search reasons reflect borough operations or borough priorities?

Arrest rate – the number of arrests resulting from stops and searches divided by the total number of stops and searches x 100

Arrest Rates from Searches (excluding s.60)



Number of Searches and Arrests

Red & blue line

Stop and Search Arrest Rate

Green line

	2012			2013									
	Oct	Nov	Dec	Jan	Feb	Mar	Apr	May	Jun	Jul	Aug	Sep	Oct
No of Searches	28,662	29,538	25,692	31,169	29,434	30,301	27,131	26,778	24,182	24,058	20,837	21,056	28,577
No of Arrests	3,351	3,562	3,492	4,054	3,913	4,311	3,990	4,101	3,889	4,117	3,371	3,400	4,407
Arrest Rate	11.7 %	12.1 %	13.6 %	13.0 %	13.3 %	14.2 %	14.7 %	15.3 %	16.1 %	17.1 %	16.2 %	16.1 %	15.4 %

No Further Action (NFA)*	15,829	15,703	13,279	16,369	15,781	15,547	13,313	12,992	11,796	11,131	9,622	9,902	13,379
--------------------------	--------	--------	--------	--------	--------	--------	--------	--------	--------	--------	-------	-------	--------

Excludes Vehicle only searches

No of Arrests for All Reasons resulting from searches other than sec60

*NFA = No arrest made or drugs warning given.

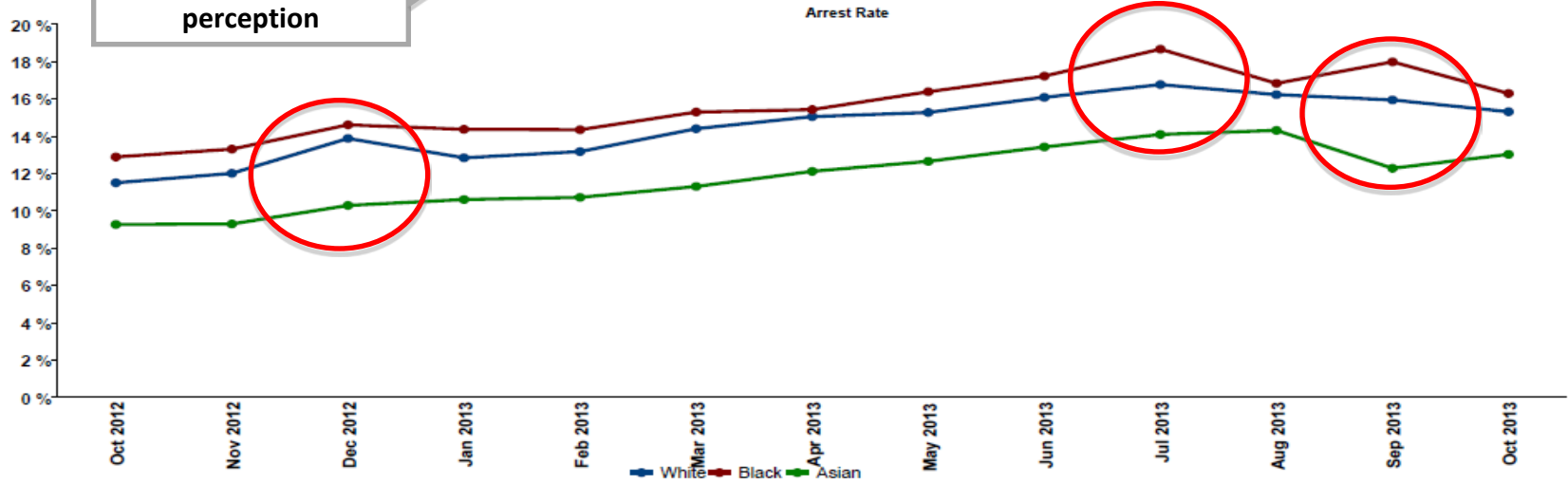
no penalty notice issued, no other out of court disposal

MOPAC

MAYOR OF LONDON
OFFICE FOR POLICING AND CRIME

Ethnic Appearance of People Searched and Subsequently Arrested (excluding s.60)

Based on officer perception



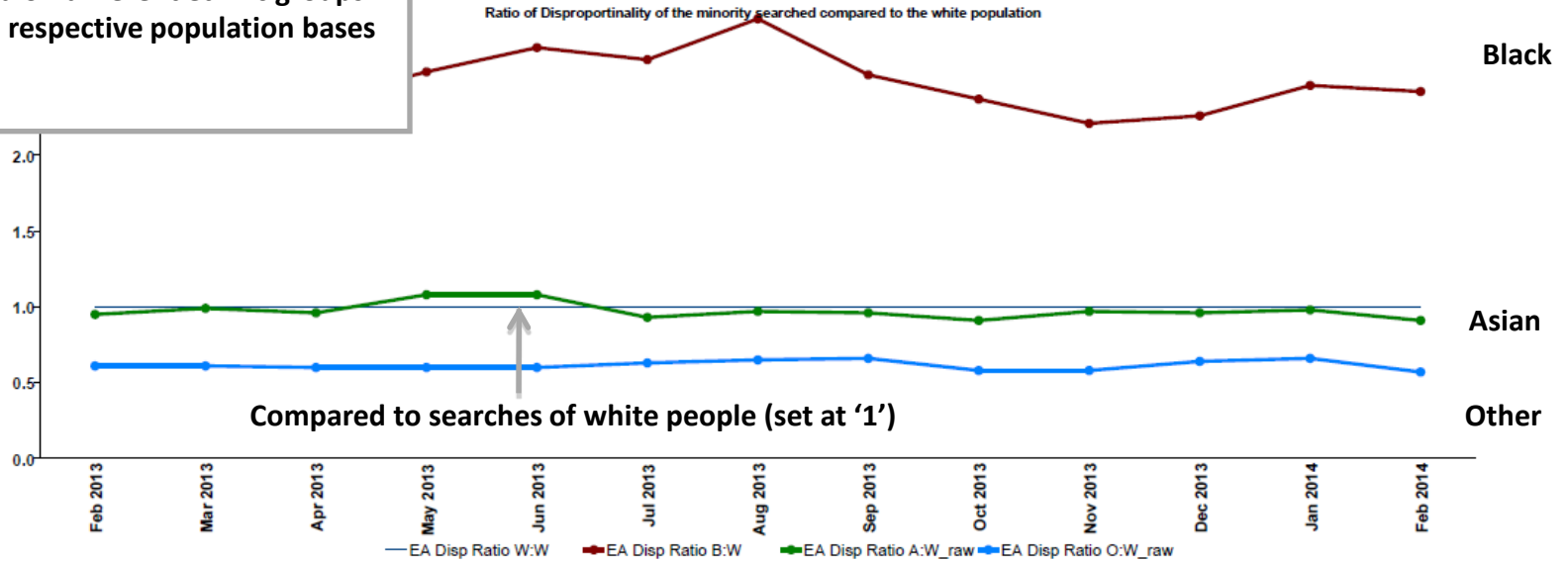
Searches/Arrests	2012						2013																			
	Oct		Nov		Dec		Jan		Feb		Mar		Apr		May		Jun		Jul		Aug		Sep		Oct	
White	14,374	1,654	15,111	1,816	13,150	1,826	15,457	1,986	15,049	1,984	15,285	2,202	13,715	2,065	12,971	1,982	11,475	1,846	11,756	1,972	9,794	1,590	10,382	1,656	14,544	2,228
Black	8,850	1,141	8,931	1,189	7,793	1,139	9,747	1,401	8,973	1,288	9,359	1,432	8,450	1,304	8,634	1,415	8,115	1,398	8,086	1,510	7,406	1,247	6,847	1,232	8,995	1,466
Asian	4,444	412	4,408	410	3,827	394	4,797	509	4,335	465	4,597	520	4,017	487	4,266	540	3,783	508	3,348	472	2,898	415	3,044	374	4,044	527
Other	897	127	985	134	835	121	1,072	147	988	161	1,001	151	884	126	833	152	736	130	795	152	680	116	732	129	909	180
Not Stated	97	17	101	13	78	12	92	11	88	15	56	6	63	7	70	11	70	7	73	11	59	3	51	9	84	6

Excludes Vehicle only searches
No of Arrests from searches (excluding sec60)

Arrest Rate	Oct	Nov	Dec	Jan	Feb	Mar	Apr	May	Jun	Jul	Aug	Sep	Oct
White	11.5 %	12.0 %	13.9 %	12.8 %	13.2 %	14.4 %	15.1 %	15.3 %	16.1 %	16.8 %	16.2 %	16.0 %	15.3 %
Black	12.9 %	13.3 %	14.6 %	14.4 %	14.4 %	15.3 %	15.4 %	16.4 %	17.2 %	18.7 %	16.8 %	18.0 %	16.3 %
Asian	9.3 %	9.3 %	10.3 %	10.6 %	10.7 %	11.3 %	12.1 %	12.7 %	13.4 %	14.1 %	14.3 %	12.3 %	13.0 %
Other	14.2 %	13.6 %	14.5 %	13.7 %	16.3 %	15.1 %	14.3 %	18.2 %	17.7 %	19.1 %	17.1 %	17.6 %	19.8 %
Not Stated	17.5 %	12.9 %	15.4 %	12.0 %	17.0 %	10.7 %	11.1 %	15.7 %	10.0 %	15.1 %	5.1 %	17.6 %	7.1 %

Ethnic Appearance of People Searched shown as a Disproportionality Ratio (2011 Census Data) excluding s.60

Difference in number of searches conducted on different ethnic groups relative to respective population bases



Excludes vehicle/vessel only searches

	2013												2014	
	Feb	Mar	Apr	May	Jun	Jul	Aug	Sep	Oct	Nov	Dec	Jan	Feb	
White	1.00 (15,051)	1.00 (15,289)	1.00 (13,719)	1.00 (12,976)	1.00 (11,481)	1.00 (11,789)	1.00 (9,806)	1.00 (10,403)	1.00 (14,644)	1.00 (13,887)	1.00 (10,488)	1.00 (11,804)	1.00 (10,267)	
Black	2.29 (8,974)	2.35 (9,360)	2.36 (8,450)	2.55 (8,639)	2.71 (8,119)	2.63 (8,094)	2.90 (7,422)	2.53 (6,866)	2.37 (9,044)	2.21 (8,017)	2.26 (6,182)	2.46 (7,562)	2.42 (6,477)	
Asian	0.95 (4,338)	0.99 (4,597)	0.96 (4,019)	1.08 (4,267)	1.08 (3,784)	0.93 (3,350)	0.97 (2,907)	0.96 (3,048)	0.91 (4,070)	0.97 (4,095)	0.96 (3,055)	0.98 (3,517)	0.91 (2,861)	
Other	0.61 (988)	0.61 (1,001)	0.60 (884)	0.60 (834)	0.60 (737)	0.63 (795)	0.65 (683)	0.66 (734)	0.58 (917)	0.58 (870)	0.64 (725)	0.66 (839)	0.57 (623)	
% of Searches Ethnicity not recorded	0.3% (88)	0.2% (56)	0.2% (63)	0.3% (70)	0.3% (70)	0.3% (76)	0.3% (61)	0.3% (53)	0.3% (90)	0.3% (76)	0.3% (58)	0.3% (70)	0.2% (45)	

Ethnicity	Population
White	4,881,636
Black	1,273,276
Asian	1,488,008
Other	523,646
Total	8,166,566

This report uses 2011 Census data. This is held in 18+1 format and the recorded ethnic appearance of the Stop/Search (4+1) must be mapped to the appropriate 18+1 Census categories. The categories are mapped as follows;
 White = White British, White Irish, White Gypsy or Irish Traveller, and any other White Background.
 Black = Black or Black British, Caribbean, African, Mixed White and Black Caribbean, Mixed White and Black African, and any other Black Background
 Asian = Asian or Asian British Indian, Pakistani, Bangladeshi, Mixed White and Asian and any other Asian background.
 Other = Chinese, Arab, and any other Ethnic Group

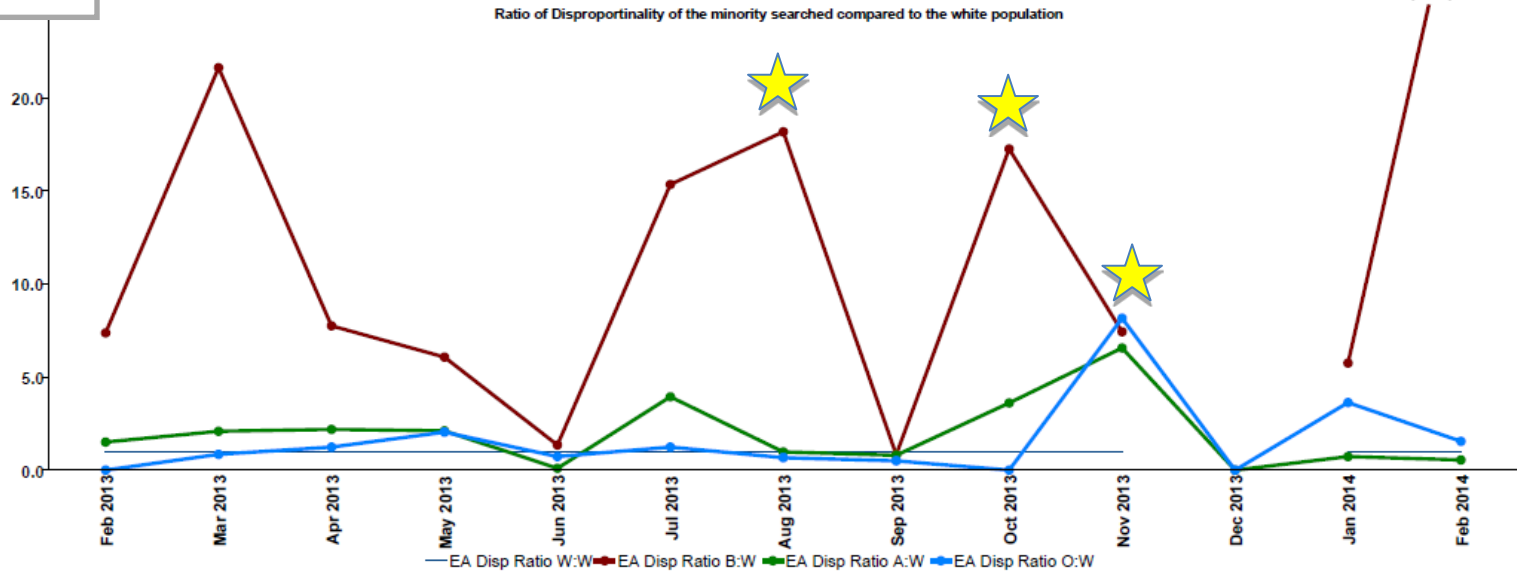
Note: Due to differences in the way ethnic appearance (EA) and self defined ethnicity (SDE) are recorded, groupings may differ.

Population (Census 2011)

Resident versus 'street' population?

Met wide data
only – not included
in borough
monitoring
mechanisms

Ethnic Appearance of People Searched (s.60) shown as a Disproportionality Ratio (2011 Census Data)



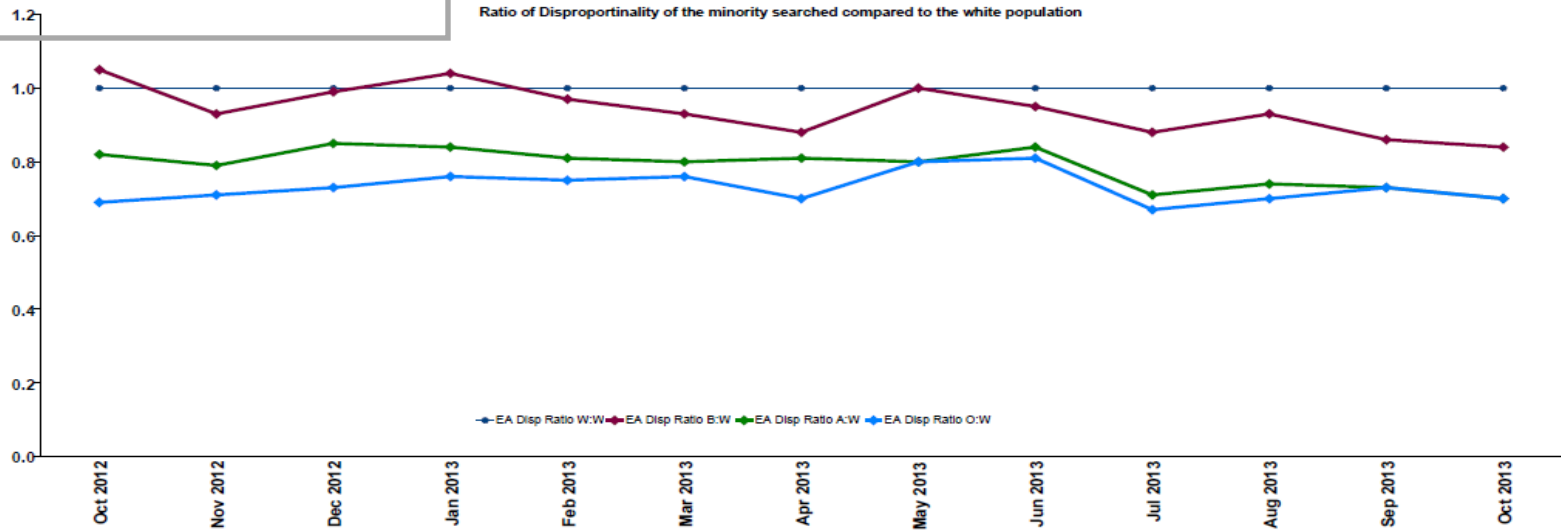
Excludes vehicle/vessel only searches

	2013												2014	
	Feb	Mar	Apr	May	Jun	Jul	Aug	Sep	Oct	Nov	Dec	Jan	Feb	
White	1.00 (13)	1.00 (11)	1.00 (45)	1.00 (151)	1.00 (128)	1.00 (15)	1.00 (84)	1.00 (37)	1.00 (10)	1.00 (16)	(0)	1.00 (18)	1.00 (6)	
Black	7.37 (25)	21.61 (62)	7.75 (91)	6.07 (239)	1.35 (45)	15.34 (60)	18.17 (398)	0.83 (8)	17.25 (45)	7.43 (31)	(1)	5.75 (27)	32.59 (51)	
Asian	1.51 (6)	2.09 (7)	2.19 (30)	2.11 (97)	0.1 (4)	3.94 (18)	0.98 (25)	0.8 (9)	3.61 (11)	6.56 (32)	0 (0)	0.73 (4)	0.55 (1)	
Other	0 (0)	0.85 (1)	1.24 (6)	2.04 (33)	0.73 (10)	1.24 (2)	0.67 (6)	0.5 (2)	0 (0)	8.16 (14)	0 (0)	3.63 (7)	1.55 (1)	
% of Searches Ethnicity not recorded	2.2% (1)	0.0% (0)	0.0% (0)	0.0% (0)	0.5% (1)	0.0% (0)	0.0% (0)	0.0% (0)	0.0% (0)	0.0% (0)	0.0% (0)	0.0% (0)	3.3% (2)	

Ethnicity	Population	
White	4,881,636	This report uses 2011 Census data. This is held in 18+1 format and the recorded ethnic appearance of the Stop/Search (4+1) must be mapped to the appropriate 18+1 Census categories. The categories are mapped as follows: White = White British, White Irish, White Gypsy or Irish Traveller, and any other White Background. Black = Black or Black British, Caribbean, African, Mixed White and Black Caribbean, Mixed White and Black African, and any other Black Background Asian = Asian or Asian British Indian, Pakistani, Bangladeshi, Mixed White and Asian and any other Asian background. Other = Chinese, Arab, and any other Ethnic Group Note: Due to differences in the way ethnic appearance (EA) and self defined ethnicity (SDE) are recorded, groupings may differ.
Black	1,273,276	
Asian	1,488,008	
Other	523,646	
Total	8,166,566	

Self Defined Ethnicity of People Stopped and held to Account* shown as a Disproportionality Ratio (2011 Census Data)

Based on definition given by person stopped

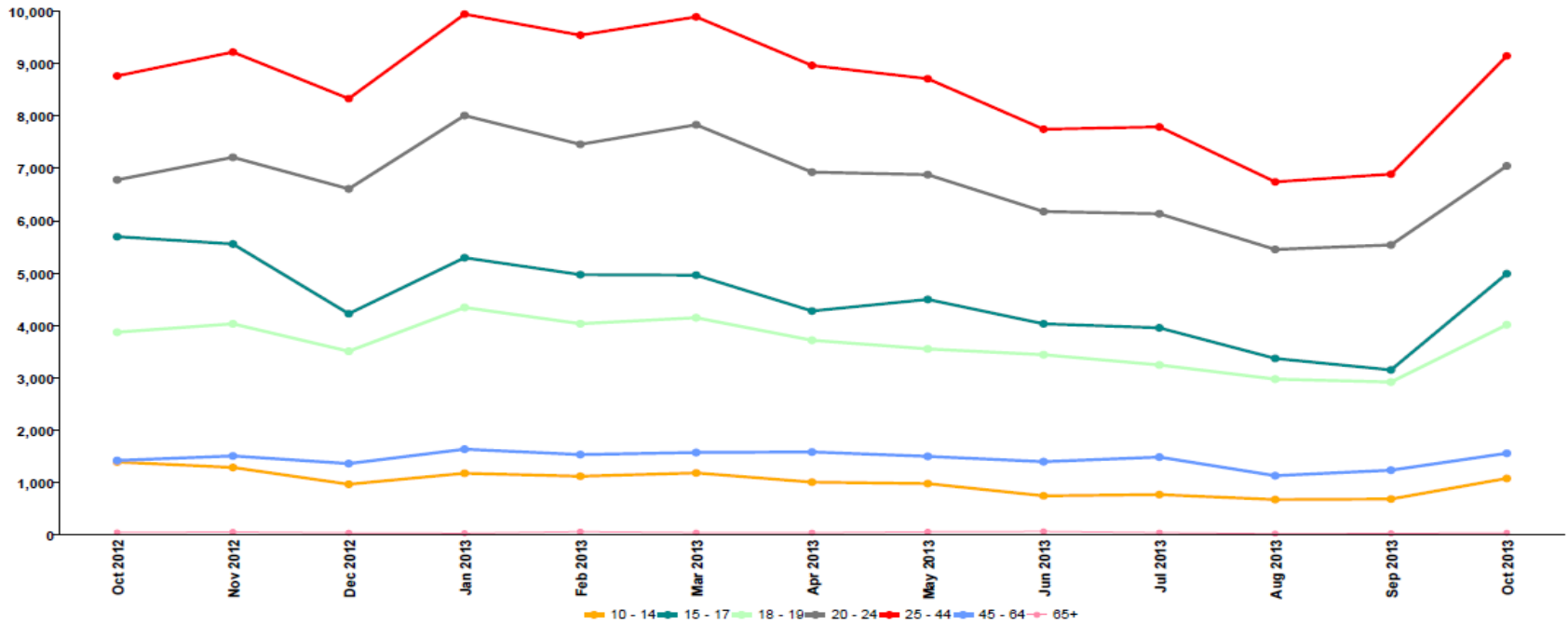


Excludes vehicle/vessel only searches

	2012			2013									
	Oct	Nov	Dec	Jan	Feb	Mar	Apr	May	Jun	Jul	Aug	Sep	Oct
White	1.00 (21,883)	1.00 (21,510)	1.00 (16,883)	1.00 (21,727)	1.00 (21,257)	1.00 (19,555)	1.00 (20,638)	1.00 (19,024)	1.00 (17,876)	1.00 (20,457)	1.00 (17,278)	1.00 (17,603)	1.00 (20,528)
Black	1.05 (5,973)	0.93 (5,196)	0.99 (4,358)	1.04 (5,902)	0.97 (5,382)	0.93 (4,733)	0.88 (4,751)	1.00 (4,940)	0.95 (4,408)	0.88 (4,715)	0.93 (4,173)	0.86 (3,928)	0.84 (4,511)
Asian	0.82 (5,487)	0.79 (5,211)	0.85 (4,394)	0.84 (5,560)	0.81 (5,228)	0.80 (4,788)	0.81 (5,093)	0.80 (4,659)	0.84 (4,594)	0.71 (4,457)	0.74 (3,884)	0.73 (3,894)	0.70 (4,394)
Other	0.69 (1,625)	0.71 (1,648)	0.73 (1,320)	0.76 (1,778)	0.75 (1,715)	0.76 (1,603)	0.70 (1,539)	0.80 (1,631)	0.81 (1,549)	0.67 (1,461)	0.70 (1,300)	0.73 (1,387)	0.70 (1,533)
% of Stops and Accounts with unknown Self Defined Ethnicity	4.0% (1,468)	4.5% (1,590)	4.2% (1,188)	4.9% (1,818)	4.7% (1,655)	4.7% (1,526)	4.8% (1,618)	4.8% (1,542)	4.3% (1,267)	4.4% (1,445)	4.3% (1,209)	4.4% (1,233)	4.4% (1,437)

Ethnicity	Pop2011	
White	4,881,636	This report uses 2011 Census data. This is held in 18+1 format and the recorded ethnic appearance of the Stop/Search (4+1) must be mapped to the appropriate 18+1 Census categories. The categories are mapped as follows; White = White British, White Irish, White Gypsy or Irish Traveller, and any other White Background. Black = Black or Black British, Caribbean, African, Mixed White and Black Caribbean, Mixed White and Black African, and any other Black Background Asian = Asian or Asian British Indian, Pakistani, Bangladeshi, Mixed White and Asian and any other Asian background. Other = Chinese, Arab, and any other Ethnic Group Note: Due to differences in the way ethnic appearance and self defined ethnicity is recorded, groupings may differ.
Black	1,273,276	
Asian	1,488,008	
Other	523,646	
Total	8,166,566	

Searches by Age Group (excluding s.60) - MPS



Age	Oct 2012		Nov 2012		Dec 2012		Jan 2013		Feb 2013		Mar 2013		Apr 2013		May 2013		Jun 2013		Jul 2013		Aug 2013		Sep 2013		Oct 2013	
	%	No.	%	No.	%	No.	%	No.	%	No.	%	No.	%	No.	%	No.	%	No.	%	No.	%	No.	%	No.	%	No.
10 - 14	5.0 %	1,395	4.5 %	1,291	3.9 %	970	3.9 %	1,180	3.9 %	1,123	4.0 %	1,187	3.8 %	1,010	3.8 %	983	3.2 %	749	3.3 %	773	3.3 %	678	3.4 %	688	3.9 %	1,083
15 - 17	20.4 %	5,697	19.2 %	5,557	16.9 %	4,226	17.4 %	5,295	17.3 %	4,972	16.7 %	4,963	16.1 %	4,278	17.2 %	4,499	17.1 %	4,033	16.9 %	3,956	16.5 %	3,372	15.4 %	3,153	17.9 %	4,990
18 - 19	13.8 %	3,873	14.0 %	4,033	14.0 %	3,509	14.3 %	4,345	14.0 %	4,035	14.0 %	4,149	14.0 %	3,719	13.6 %	3,554	14.6 %	3,443	13.9 %	3,248	14.6 %	2,977	14.3 %	2,922	14.4 %	4,015
20 - 24	24.2 %	6,732	25.0 %	7,212	26.4 %	6,809	26.3 %	8,009	26.0 %	7,459	26.4 %	7,833	26.1 %	6,928	26.3 %	6,880	26.1 %	6,176	26.2 %	6,133	26.8 %	5,453	27.1 %	5,539	25.3 %	7,047
25 - 44	31.3 %	8,765	31.9 %	9,221	33.3 %	8,332	32.7 %	9,945	33.2 %	9,543	33.4 %	9,893	33.8 %	8,965	33.3 %	8,712	32.8 %	7,748	33.2 %	7,792	33.1 %	6,743	33.7 %	6,890	32.8 %	9,148
45 - 64	5.1 %	1,424	5.2 %	1,511	5.4 %	1,365	5.4 %	1,640	5.3 %	1,537	5.3 %	1,577	6.0 %	1,587	5.7 %	1,503	5.9 %	1,401	6.4 %	1,489	5.6 %	1,134	6.1 %	1,239	5.6 %	1,562
65+	0.2 %	51	0.2 %	60	0.2 %	43	0.1 %	36	0.2 %	65	0.2 %	48	0.2 %	45	0.2 %	63	0.3 %	70	0.2 %	47	0.1 %	28	0.2 %	33	0.2 %	43

PACE and Other Stop and Search (excl. s.60) - Last 12 Months vs. 2011 Census Population Data

November 2012 to October 2013

Ethnicity by 1,000 Head of Population

	White Searches per 1000 White Pop	Black Searches per 1000 Black Pop	Asian Searches per 1000 Asian Pop	Other Searches per 1000 Other Pop
Ethnic Appearance (EA)	32.5	79.6	31.8	20.0

Ethnicity Ratio by 1,000 Head of Population

Searches per 1000 population Ratio Black:White	Searches per 1000 population Ratio Asian:White	% of Searches without record of ethnicity
2.4	1.0	0.3 %

Age Group by 1,000 Head of Population

MPS	10 to 14	15 to 17	18 to 19	20 to 24	25 to 44	45 to 64	65+	% of Searches without Age record
No of Searches / 1000 Pop	25.7	190.3	229.7	129.1	35.5	10.1	0.6	2.3 %

Proportion by Age Group

MPS	10 - 14	15 - 17	18 - 19	20 - 24	25 - 44	45 - 64	65+
% of Searches	3.8 %	17.1 %	14.1 %	26.1 %	33.1 %	5.6 %	0.2 %

Gender by 1,000 Head of Population

MPS	Male	Female	Total
No of Searches per 1000 Pop	74.2	4.6	39.0

Vehicle Only Searches: 2,573

Stops and Account* - last 12 months by population - (2011 Census Data) - Summary

Between November 2012 and October 2013

Ethnicity by 1,000 Head of Population

Stop and Account / 1000 Pop (SDE)	White Stop and Account per 1000 White Pop	Black Stop and Account per 1000 Black Pop	Asian Stop and Account per 1000 Asian Pop	Other Stop and Account per 1000 Other Pop
Self Defined Ethnicity (SDE)	48.0	44.8	37.7	35.3

Ethnicity Ratio by 1,000 Head of Population

Stops per 1000 population Ratio Black:White	Stops per 1000 population Ratio Asian:White	% of Stops and Account without record of ethnicity
0.9	0.8	4.6 %

Arrests following PACE and Other Searches (excl. s.60) - **Current Month**

October 2013

Arrests by Reason Following Search

	A - Stolen Property		B - Drugs		C - Firearms		DE - Offensive Weapon		F - Going Equipped		O - Other	
MPS	911	20.7 %	1,505	34.2 %	37	0.8 %	313	7.1 %	149	3.4 %	1,492	33.9 %

Arrest Rates by Ethnic Appearance (EA)

	White		Black		Asian		Other		No Stated	
MPS	2,228	50.6 %	1,466	33.3 %	527	12.0 %	180	4.1 %	6	0.1 %

Arrest Rates by Gender

Arrests resulting from all PACE Searches: Gender Profile	FEML		MALE		UNKN	
MPS	293	6.6 %	4,112	93.3 %	2	0.0 %

Arrest By Age Group

Arrests resulting from all PACE Searches: Age Profile	10 - 14	15 - 17	18 - 19	20 - 24	25 - 44	45 - 64	65+
MPS	109	676	475	1,005	1,728	305	7

MOPAC

MAYOR OF LONDON
OFFICE FOR POLICING AND CRIME

Arrests following PACE and Other Searches (excl. S60) **Last 12 Months**

November 2012 to October 2013

Arrests by Reason Following Search

	A - Stolen Property		B - Drugs		C - Firearms		DE - Offensive Weapon		F - Going Equipped		O - Other	
MPS	8,400	18.0 %	15,042	32.3 %	498	1.1 %	2,969	6.4 %	1,468	3.1 %	18,230	39.1 %

Arrest Rates by Ethnic Appearance (EA)

	White		Black		Asian		Other		No Stated	
MPS	23,153	49.7 %	16,021	34.4 %	5,621	12.1 %	1,699	3.6 %	111	0.2 %

Arrest Rates by Gender

Arrests resulting from all PACE Searches: Gender Profile	FEML		MALE		UNKN	
MPS	3,345	7.2 %	43,227	92.8 %	33	0.1 %

Arrest By Age Group

Arrests resulting from all PACE Searches: Age Profile	10 - 14	15 - 17	18 - 19	20 - 24	25 - 44	45 - 64	65+
MPS	1,487	6,877	4,766	10,533	18,391	3,432	99

MOPAC

MAYOR OF LONDON
OFFICE FOR POLICING AND CRIME

Reasons for Search and Subsequent Arrest

October 2013

What was the search reason?

Search Reason

Recorded Arrest Reason

	A - Stolen Property	B - Drugs	C - Firearms	D - Off. Weapons (PACE)	E - Off. Weapons (CJA, Schools)	F - Going Equipped	G - Other Power	K - Anticipated Violence	L - Criminal Damage	All Searches for Arrest Reason
A - Stolen Goods	735	97	0	18	2	54	4	0	1	911
B - Drugs	71	1,341	3	36	3	38	12	2	1	1,507
C - Firearms	3	5	26	2	0	1	0	0	0	37
D - Off. Weapons (PACE)	26	44	5	137	5	11	1	9	1	239
E - Off. Weapons (CJA, Schools)	10	21	1	15	25	9	1	2	1	85
F - Going Equipped	25	9	0	5	0	107	1	0	2	149
O - Other	408	380	21	312	38	187	110	0	36	1,492
All Arrests for Search Reason	1,278	1,897	56	525	73	407	129	13	42	4,420

What was the arrest reason?

Arrest reason/all arrests for search reason x 100

MPS Borough Comparison

October 2013

MPS Borough Comparison October 2013				
BOCU Search Location	Search Volume (PACE, S60, Other)	Arrest Rate %	% Weapons Searches*. Codes (C/D/E/K)	% Key Crime Searches*. Codes (A/F/L)
Barking & Dagenham	520	14.6 %	8.1 %	35.2 %
Barnet	1,064	18.7 %	7.0 %	54.1 %
Bexley	376	16.0 %	4.0 %	26.9 %
Brent	1,382	14.5 %	5.9 %	19.2 %
Bromley	1,473	16.2 %	11.3 %	47.9 %
Camden	1,170	13.9 %	8.4 %	37.4 %
Croydon	901	16.5 %	13.8 %	35.1 %
Ealing	833	13.9 %	8.9 %	30.4 %
Enfield	1,071	14.2 %	7.6 %	24.8 %
Greenwich	1,354	14.3 %	9.2 %	34.9 %
Hackney	628	22.6 %	19.4 %	32.5 %
Hammersmith & Fulham	1,311	18.2 %	9.6 %	29.5 %
Haringey	666	16.8 %	12.2 %	31.4 %
Harrow	659	14.4 %	5.9 %	25.6 %
Havering	551	16.7 %	4.4 %	49.4 %
Heathrow Airport	97	27.8 %	9.3 %	57.7 %
Hillingdon	413	8.7 %	5.8 %	25.7 %
Hounslow	954	15.6 %	8.9 %	29.5 %
Islington	466	19.5 %	6.7 %	39.3 %
Kensington & Chelsea	406	13.3 %	6.7 %	35.5 %
Kingston upon Thames	561	15.5 %	10.3 %	42.4 %
Lambeth	1,179	14.9 %	24.1 %	27.2 %
Lewisham	705	15.5 %	14.5 %	33.8 %
Merton	431	16.7 %	13.7 %	33.4 %
Newham	1,071	17.7 %	11.3 %	23.9 %
Redbridge	815	16.1 %	10.3 %	35.7 %
Richmond upon Thames	470	16.0 %	5.1 %	50.9 %
Southwark	1,814	12.2 %	13.5 %	34.3 %
Sutton	327	19.0 %	7.3 %	46.2 %
Tower Hamlets	1,199	13.7 %	7.9 %	16.7 %
Waltham Forest	819	15.4 %	9.9 %	22.2 %
Wandsworth	565	15.9 %	10.1 %	37.0 %
Westminster	2,627	15.0 %	8.4 %	33.5 %
MPS	28,878	15.5 %	10.1 %	33.1 %

Caution when comparing volumes

Compare % against MPS and neighbouring/similar boroughs

*Weapons search target is 20% of all Searches. Key Crimes Search target is 40% of all searches

Key MOPAC 7 crime types
 Violence with injury, burglary, robbery, theft from the person, theft of motor vehicles, theft from motor vehicles and criminal damage

MOPAC

MAYOR OF LONDON
 OFFICE FOR POLICING AND CRIME

Some further sources of information

- **Metropolitan Police crime figures:** <http://www.met.police.uk/crimefigures/>
- **National stop and search data:** <https://www.gov.uk/government/collections/police-powers-and-procedures-england-and-wales> Statistics on arrests for recorded crime, stops and searches, breath tests and police action in relation to motoring offences.
- **MPS public complaints and conduct data (Borough Support Management Information):** http://www.met.police.uk/foi/units/directorate_professional_standards.htm Page 9 includes number of officer/staff allegations arising from a stop and search incident.
- **London Datastore:** <http://data.london.gov.uk/> & <http://data.london.gov.uk/datastore/package/metropolitan-police-service-recorded-crime-figures-and-associated-data> The London Datastore includes various datasets such as environment, health, transport and the economy. The policing and crime section of the dashboard includes recorded crime, officer numbers and longer term (from April 2008) volume of stops and searches and arrest rate, officer numbers, ASB data and MPS Public Attitude Survey (PAS) data.
- **Daytime population:** <http://data.london.gov.uk/datastore/package/daytime-population-borough> Estimated number of people in a borough in the daytime during an average term time day (based on business, education, tourism, passenger and population data).
- **Borough profiles:** <http://data.london.gov.uk/datastore/package/london-borough-profiles> Help paint a general picture of an area by presenting a range of headline indicator data covering demographic, economic, social and environmental datasets.
- **London Census data:** <http://data.london.gov.uk/census> Results from the 2011 Census at London and borough level.
- **HMIC crime comparator:** <http://www.hmic.gov.uk/crime-and-policing-comparator/> Data on recorded crime and anti-social behaviour (ASB), quality of service, finances and workforce numbers for all police forces in England and Wales.
- **Police powers to stop and search – your rights:** <https://www.gov.uk/police-powers-to-stop-and-search-your-rights> Government website detailing police powers to stop and search and rights of the individual.