

**Strategic Spatial Planning Officer Liaison Group**  
**8th meeting – Monday, 30 November 2015, 14:00**  
**Committee Room 5, City Hall, Queen’s Walk, London**

**Agenda**

- 1 Apologies**
- 2 Notes of 02 Oct 2015 meeting (Richard Linton, GLA)**  
Attached
- 3 Strategic Water Supply in the Wider South East**  
Presentation by water company representatives
- 4 Future Demographic Projections and Work on Data/Evidence**  
Presentation by Ben Corr, GLA, on emerging modelling work  
E-mail by James Cutting, Suffolk County Council, of 5 Nov (attached)
- 5 Preparation of 2nd Wider South East Summit (Jorn Peters, GLA)**  
Draft Summit papers (attached)  
Draft Outer London Commission Report (attached)  
Draft new independent website
- 6 AOB**

**Next meetings:**

Fri 5 Feb, Fri 15 April and Fri 24 June 2016  
all 2 pm – 4.30 pm in Committee Room 5, City Hall, London

## Working Group members

Richard Linton	GLA (Chair)
John Lett	GLA
Jorn Peters	GLA
Jack Straw	Surrey Planning Officers Association/Mole Valley DC (Deputy Chair)
Sue Janota	Surrey County Council
Paul Donovan	Hertfordshire County Council
Des Welton	Hertfordshire Planning Officers Group Co-ordinator
Matthew Jericho	Essex County Council
Claire Stuckey	Essex Planning Officers Group/Chelmsford BC
Richard Hatter	Thurrock Council
Carolyn Barnes	Bedford Borough Council
Andrew Taylor	Uttlesford District Council
Stephen Walford	Buckinghamshire County Council
Alison Bailey	Buckinghamshire Planning Officers Group/South Bucks DC
Bryan Lyttle	Berkshire Heads of Planning/West Berkshire
Tom Marchant	Kent County Council
Tania Smith	Kent Planning Officers Group/Dartford BC
Tara Butler	South London Partnership/LB Merton
Steve Barton	West London Alliance/West London Planning Policy Group/LB Ealing
Nick Woolfenden	South East England Councils
Cinar Altun	East of England LGA
Lizzie Clifford	London Councils
James Cutting	Suffolk County Council
Bev Hindle	Oxfordshire County Council
John Cheston	Sussex Planning Officers
John McGill	London Stansted Cambridge Consortium
?	Environment Agency
Lucinda Turner/Peter Wright	Transport for London

## NOTES OF THE Eighth MEETING OF SSPLOG

Held on 30 Nov 2015 at 14.00 at Committee Room 5, City Hall, London

### Present:

Richard Linton	GLA Planning (Chair)
John Lett	GLA Planning
Jorn Peters	GLA Planning
Richard Hatter	Thurrock Council (Chair of East of England SSPOLG)
Sue Janota	Surrey County Council
Des Welton	Hertfordshire Planning Officers Group Co-ordinator
Paul Donovan	Hertfordshire County Council
Alison Bailey	Buckinghamshire Planning Officers Group/South Bucks DC
Carolyn Barnes	Bedford Borough Council
Matthew Jericho	Essex County Council
Claire Stuckey	Essex Planning Officers Group/ Chelmsford BC
Andrew Taylor	Uttlesford District Council
Tom Marchant	Kent County Council
Nick Woolfenden	South East England Councils
Cinar Altun	East of England LGA
Linda Currie (sub)	Oxfordshire County Council
John Cheston	Sussex Planning Officers
James Cutting	Suffolk County Council
Stephen King (sub)	London Stansted Cambridge Consortium
John Williamson	Cambridgeshire & Peterborough Joint Strategic Planning Unit
Nicola Whittle	Environment Agency
David Jowsey	Transport for London
Mike Hope	GLA Economics
Ben Corr	GLA Demography

### Apologies:

Jack Straw	Surrey Planning Officers Association/Mole Valley DC (Deputy Chair)
Sarah Hollamby	Berkshire Heads of Planning/Wokingham
Bryan Little	Berkshire Heads of Planning/West Berkshire Council
Stephen Walford	Buckinghamshire County Council
Bev Hindle	Oxfordshire County Council
John McGill	London Stansted Cambridge Consortium
Steve Barton	West London Alliance/West London Planning Policy Group/LB Ealing
Tara Butler	South London Partnership/LB Merton
Lizzie Clifford	London Councils
Jeremy Skinner	GLA Business Policy (Infrastructure Plan)

### Guests (Water Management):

Chris Lambert	Thames Water
Steve Moncaster	Anglian Water
Lester Sonden	Sutton and East Surrey Water
Katherine Ward	Affinity Water
Alex Nickson	GLA Environment

## **Item 2 - Notes of the meeting of 2 October 2015**

Notes were agreed. Identified actions are complete/ underway.

Website: The GLA website is undergoing a complete review. An independent wider South East website, which is hosted on the GLA website, will be established as part of this review.

[*This new website can now be viewed via the following link: <http://www.london.gov.uk/about-us/organisations-we-work/policy-and-infrastructure-collaboration-across-wider-south-east> ]*

## **Item 3 – Strategic Water Supply in the South East**

Chris Lambert (Thames Water) for Water Resources in the South East (WRSE) and Steve Moncaster (Anglian Water) for Water Resources East Anglia gave presentations (provided separately) to introduce the issue.

Chris Lambert pointed out that WRSE covers a slightly larger area than the South East of England. Water companies' Water Resource Management Plans (WRMPs) would now seek to cover longer-term planning horizons of at least 50 years. Projections bear significant uncertainties and would be influenced by a range of factors including e.g. population growth and climate change impacts. Plans would aim to meet projected demand through a combination of demand management and additional supply measures. WRSE is currently identifying and exploring options, which would be analysed and evaluated between spring 2016 and 2017. The outputs would inform the water companies' draft WRMPs. Steve Moncaster added in his presentation that their draft multi-company, multi-sector water resource management strategy would be expected in summer 2017.

The water company representatives stated that they were using Strategic Housing Market Assessment (SHMA) data from local authorities. Their strategies would explore a range of different growth scenarios to inform their modelling and projected future water supply requirements.

They were also asked about specific outputs from their work that could be relevant to inform the technical evidence underpinning the London Plan and Local Plans at a strategic level, in particular where a future resource may need to serve areas beyond its administrative boundaries.

### **ACTION [emerging after the meeting]**

*[Steve Moncaster is setting up a meeting with East of England SSPOLG officers to explore how to work together on the development of the Water Resources East Anglia strategy.*

*Water Resources South East has invited the GLA to join their Senior Management Group to receive a periodic update on the planning of strategic water resources in the South East. Alex Nickson attended their meeting on 13 January.]*

## **Item 4 – Future Demographic Projections and Work on Data/Evidence**

Ben Corr presented the GLA's emerging demographic modelling work (provided separately). The model is being built with trend-based projections consistent with ONS/DCLG methodology. Then, it would be made available on the Witan Platform (potentially open-source) and there would be the opportunity to scrutinise the model and to consider variation of a range of assumptions. It is unlikely that ONS will provide 10-year out-migration trend based projections.

Participants indicated that it may be useful to meet again at an appropriate point with relevant consultants undertaking SHMAs within the Wider South East (WSE) to discuss the new model. Some members are concerned that the outcome of the emerging modelling could disrupt Local Plan

preparation (in particular by indicating higher housing need). However, Planning Inspectors at any Local Plan examination would expect the consideration of London model/scenario/impact.

James Cutting broadly welcomed the emerging modelling work. In an e-mail that had been circulated ahead of the meeting, he had suggested the need to consider some joint academic research to inform the range of appropriate assumptions for the emerging and other models. Participants agreed that this could be useful but highlighted that it would be important to examine first relevant research that already exists or could be carried out amongst the authorities themselves. Further academic research may e.g. be necessary on the role of international migration.

**ACTION:** James to explore his proposal further in collaboration with relevant officers.

James also raised the need for data harmonisation across the WSE. In response, Paul Hodgson, GIS & Infrastructure Manager at the GLA (020 7983 4965- [Paul.Hodgson@london.gov.uk](mailto:Paul.Hodgson@london.gov.uk)) presented an overview of an Urban Sharing Platform (slide provided separately), a 2-year project the GLA has embarked on. It looks in depth at data sharing opportunities and at combining datasets. It would also explore the collection of real-time data and includes partnership working e.g. with Network Rail.

Mike Hope then introduced the GLA's emerging employment modelling (provided separately). Relevant data from ONS go back to 1971. The GLA is also thinking about extending the capabilities of this model to cover the WSE, but that the resource implications would require further consideration. Alongside the demographic modelling it could be incorporated on the Witan Platform. Participants indicated that there would be fewer concerns than with the demographic modelling but questioned whether the model should be provided at a more disaggregated level. Attention was also drawn to the established East of England Forecasting Mode, which covers an area larger than the East of England.

Finally, it was agreed that the 'Stocktake working draft', which had been circulated, would be just for information/illustration at this point and not for discussion about all the individual issues.

#### **Item 5 – Preparation of 2nd Wider South East Summit**

Jorn Peters introduced the draft Summit papers that had been circulated. These are the agenda and a draft Recommendations Paper including an Annex each on the following: (1) emerging consensus on arrangements, (2) common understanding of data, (3) Outer London Commission draft issues and recommendations on Barriers to Delivery. Jorn also confirmed the individuals who would introduce/present the different agenda items. Phil Swann from 'Shared Intelligence' would chair and facilitate the Summit. With regards to the emerging priorities, Summit participants would be encouraged to log issues for further consideration.

The draft Outer London Commission Report on WSE relations had also been circulated. John Lett clarified that the Summit would not be asked to respond to the Commission's recommendations, but they were broadly consistent with the draft Summit Recommendations paper.

It was also clarified that Government departments had not been invited to the Summit, as there did not appear to be any political appetite, but Government would be engaged at an appropriate time in the future.

The value of consultants briefly presenting an independent perspective on collaboration opportunities to the Summit to stimulate the debate was raised. However, it was felt that there was insufficient time ahead of the Summit to prepare such input appropriately.

An understanding of the pipeline of planning permissions across the Wider South East would be useful to inform further discussions about barriers to housing delivery and a common understanding of evidence. For London relevant figures are available.

**ACTION:** The GLA to share their methodology, and SEEC/EELGA to investigate the scale of the pipeline of planning permissions for their areas.

**Item 6 – AOB**

Green Belt Review: John Lett confirmed: Unless there would be a major change of view by the Mayor, the current administration would stick to the NPPF line that Green Belt reviews are a matter for Local Planning Authorities and not the Mayor precluding him from undertaking a strategic review.

# Water Resources in the South East



## **Presentation to the GLA**

**Chris Lambert**  
**On behalf of the WRSE**

30 November 2015

# Water Resources in the South East



## **Contents**

- **Overview of WRSE**
- **Example of previous work**
- **Current planning cycle**



## OVERVIEW

# Water Resources in the South East



- WRSE Group is a partnership of water companies, regulators and other stakeholders who work together to develop a flexible, resilient and adaptive regional strategy for water resources in the South East of England
- Since 1997, the WRSE group has examined regional water supply issues
- Its work remains very important given increasing pressures being placed on water resources in this area
- WRSE group members currently include:

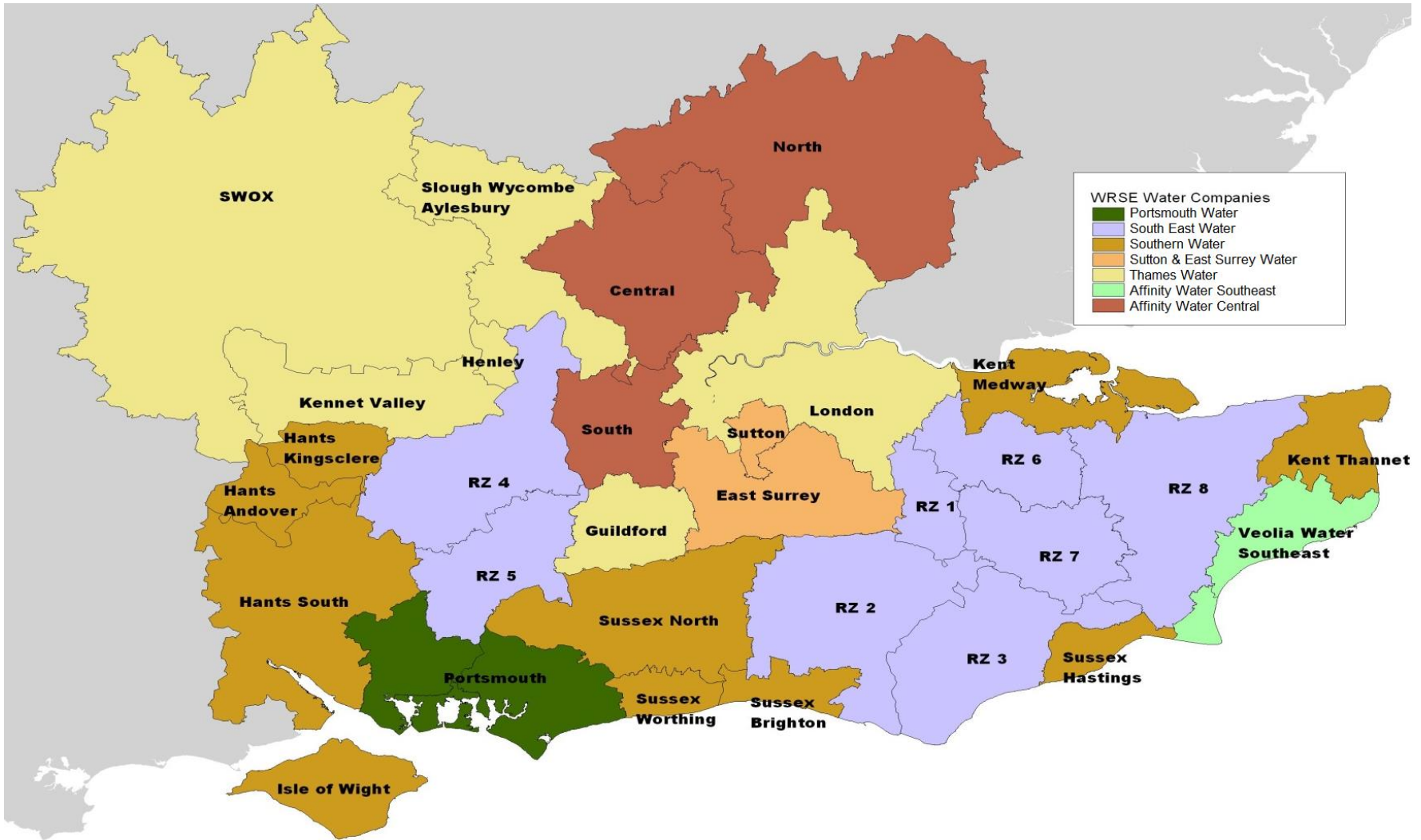
CC Water	Ofwat	Southern Water
Environment Agency	Portsmouth Water	Sutton and East Surry Water
Natural England	South East Water	Thames Water
Defra	Anglian Water (representing WREA)	

## OVERVIEW

# Water Resources in the South East



## Focus Area



# Water Resources in the South East



The WRSE seeks to find strategic, regional level options, including:

- Demand management
- Inter company transfers
- Transfers from outside the region
- New and enhanced water sources

This work is undertaken to inform the 5 yearly Water Resource Management Plan (WRMP) cycle

## OVERVIEW

# Water Resources in the South East



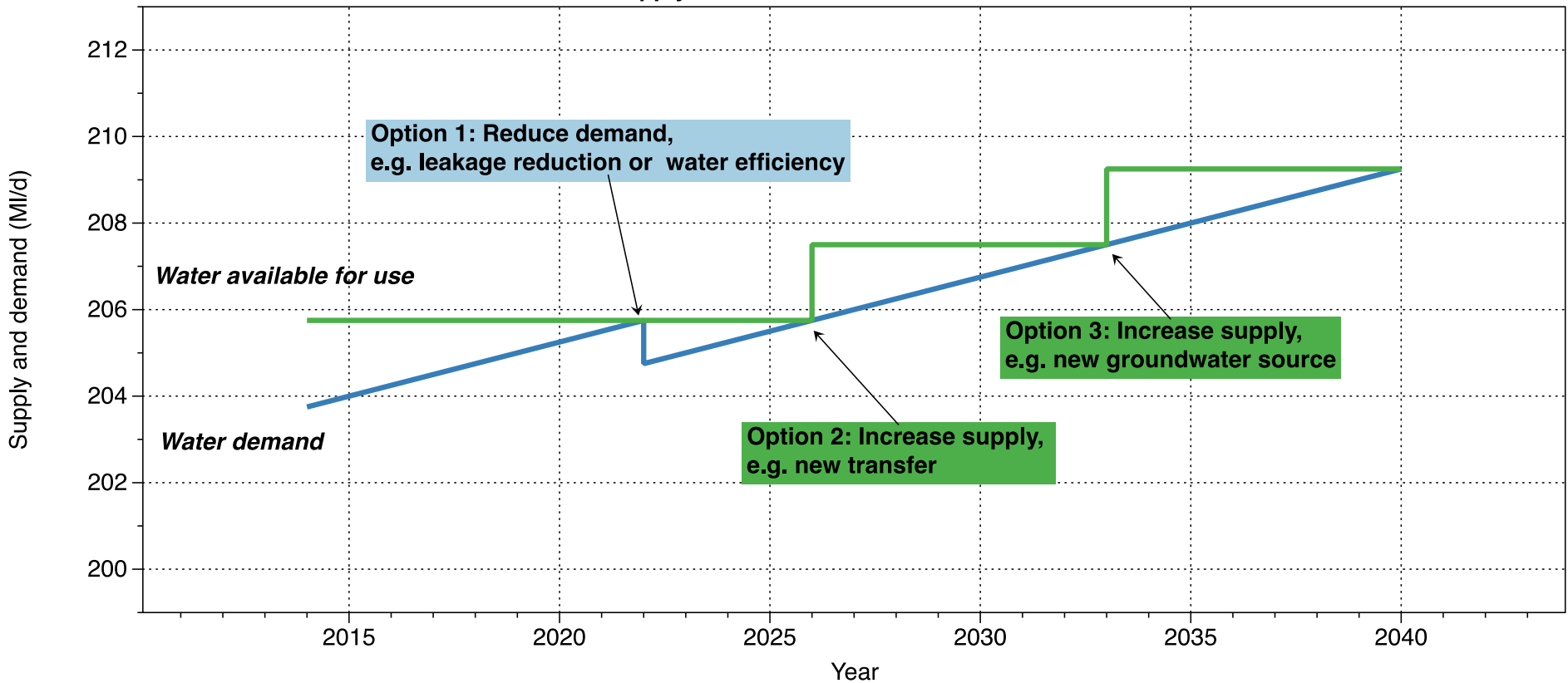
- **Water Resources Management Plans (WRMPs)** are published every five years
- WRMPs use a long term planning horizon to ensure water services can be maintained under future scenarios of population and climate change, and other factors
- New options are identified that would help to fill supply deficits predicted by the modelling work
- Options are traditionally assessed on the basis of whole life cost, and environmental impact
- For WRPM19, existing and new water and wastewater services will also be examined for their **resilience**

# EXAMPLE OF PREVIOUS WORK

# Water Resources in the South East



Supply demand for Water Resource Zone A



Work is undertaken in accordance with the *Water Resources Planning Guidelines* from the regulators

**EXAMPLE OF  
PREVIOUS  
WORK**

# Water Resources in the South East



## 34 WR Zones

- Supply & demand curves
- Sustainability reductions
- Climate change
- Average and critical periods

## 45 + Scenarios

- Different visions of the future, e.g.
- Further sustainability reductions
- +/- demand and deployable outputs
- Constraints on different options

## 1000 + options

- Demand reduction
- New resources
- Transfers

**Least cost  
optimisation model**

## Output

- A list of options for each WRZ which:**
- Balance supply and demand
  - Minimise the total cost across the region

## EXAMPLE OF PREVIOUS WORK

# Water Resources in the South East

## Outputs from the last cycle of Water Resource Planning

- Options included:
  - 55 existing transfers
  - 161 new transfers
  - 318 new sources
  - 90 water efficiency
  - 36 metering
  - 60 leakage reduction
  
- Total 720 Options





- The focus of Water Resource Planning in the past has been to find the overall **Least Cost Solution** to water supply deficits
- A number of limitations have been identified with this approach, not least that:

## **Least Cost ≠ Best Value**

- The Environment Agency's Guidance set out its expectation that more **complex decision making processes** are needed for the south east, given the nature and scarcity of water resources in the region
- Therefore the current focus of the WRSE work programme is on '**resilience**'
- Modelling of water sources on a regional basis, will examine different scenarios of future risk including floods, droughts, hazards, changes in population and climate





To undertake the current work programme, six work streams have been created:

- **Engagement** Workstream, chaired by Lee Dance (South East Water)
- **Options Appraisal** Workstream, chaired by Chris Lambert (Thames Water)
- **Modelling** Workstream, chaired by Anna Wallen (Thames Water)
- **Resilience** Workstream, chaired by Nigel Hepworth (Southern Water)
- **Scenarios and Decision Making**, chaired by Meyrick Gough (Southern Water)



## Overall timetable

The outputs of the work will inform each water company's draft **WRMP**, which must be published for consultation in 2018 (*latest*) following Defra's approval

- **Phase 1: May 2014 to March 2016**
  - Exploration of resilience, and assessing company water supply options.
  - Preliminary modelling to explore aspects of droughts and hazards
- **Phase 2: April 2016 to March 2017**
  - Further modelling using supply demand data and options information being prepared by water companies for WRMP19
  - Timing is geared to assist with 'informing' companies of regional options ahead of individual WRMPs
- **Phase 3: Post April 2017**
  - Possible further modelling, and other work to continue to develop a regional assessment that can inform water company plans

## **CONCLUSION**

# Water Resources in the South East



**Thank you**

**Any Questions**



# Water Resources East Anglia (WREA) project

**Steve Moncaster**  
**Supply Demand Strategy Manager**

Briefing for the South East Planning Officer Group  
November 2015

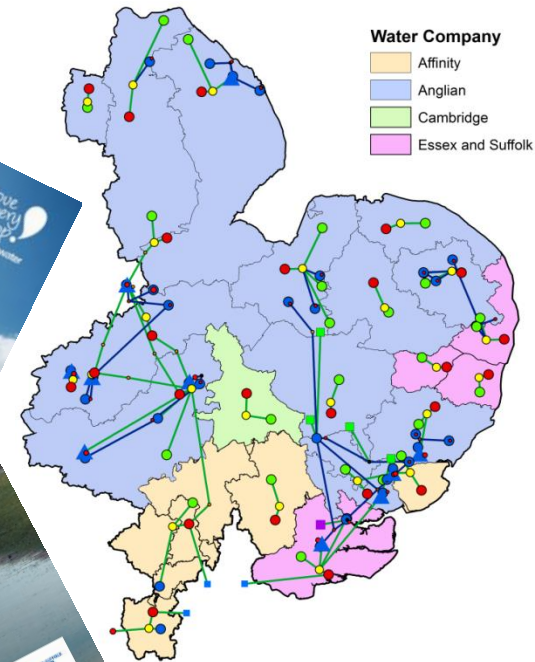
LOVE EVERY DROP. PUT WATER AT THE HEART  
OF A WHOLE NEW WAY OF LIVING.

# Purpose of the WREA project



The Water Resource East Anglia (WREA) project is a multi-company, multi-sector initiative

- For water companies, it will deliver **reliable**, **sustainable** and **affordable** supplies which are **resilient** to the effects of climate change, population growth and multi-season drought
- **Flexible** and **adaptive** implementation strategy



LOVE EVERY DROP. PUT WATER AT THE HEART  
OF A WHOLE NEW WAY OF LIVING.

# WREA stakeholders

**WREA Chief Executive Group** (strategic direction setting and final decision-making body). Independently Chaired.

- Agree terms of reference for WREA
- Responsible for effective governance of WREA
- Direct the work of the Delivery Group
- Discuss and agree responses to recommendations brought by sub-groups
- Help recruit and retain senior stakeholders
- Lead role in influencing policy
- Sign-off long term strategy
- Main external spokespeople for WREA

**Core Consultative Group**

- Broad based
- Meets biannually
- Offers input to developing WREA workstreams
- Key group for consultation
- Onward communication of kev WREA priorities

**WREA Delivery Group**. AW Chaired. (Drives direction, action and delivery)

WREA Anglia Technical Group. AW Chaired. (specialists and planners providing research and evidence)

Subject Specific T&F groups



LOVE EVERY DROP. PUT WATER AT THE HEART OF A WHOLE NEW WAY OF LIVING.

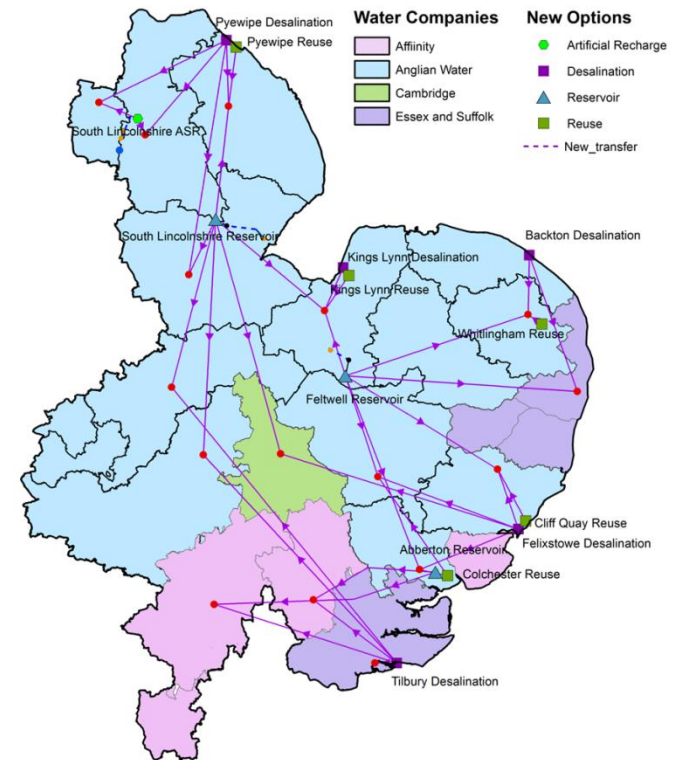
# WREA expected outputs

## Short to medium term

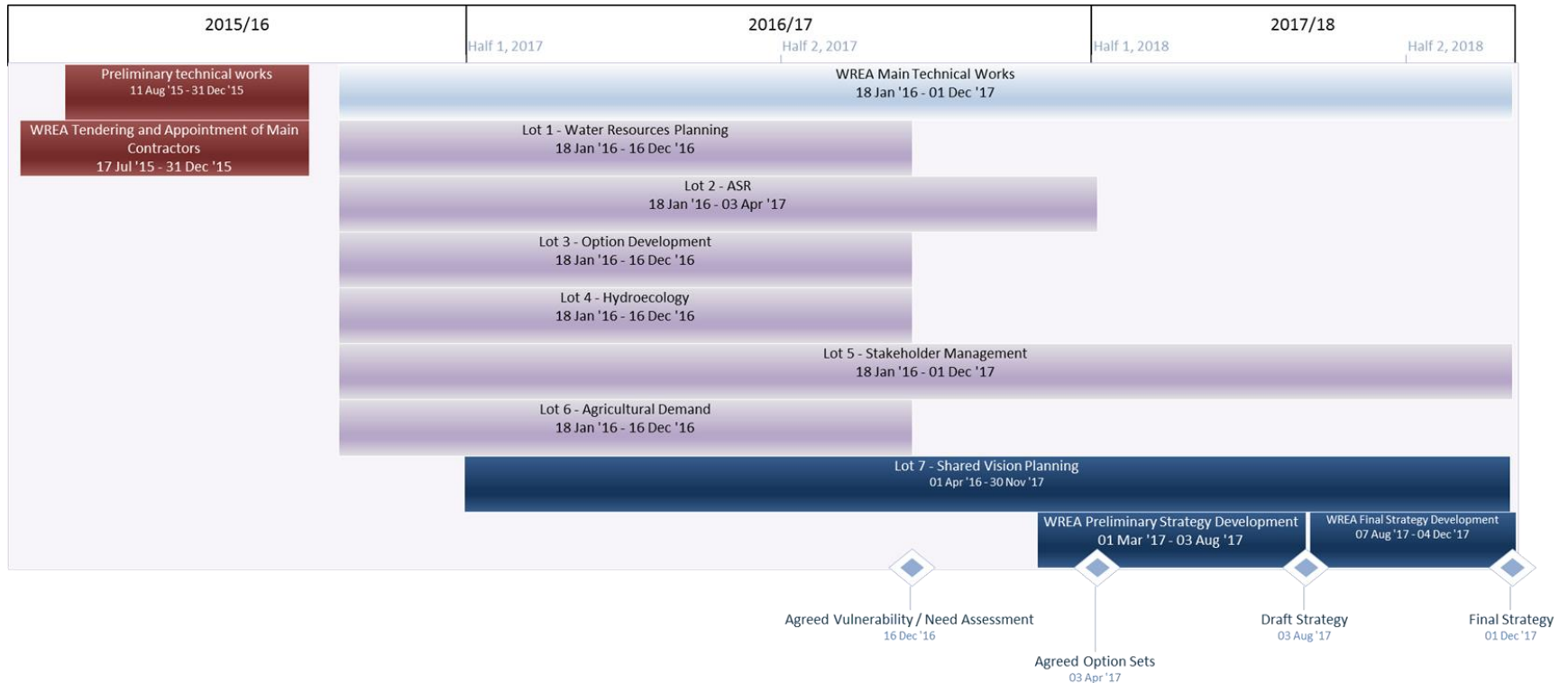
- Consensus about vulnerability and options
- Agreed long-term water resource management strategy

## Medium to long term

- Demand management (leakage, metering and water efficiency)
- Additional supply capacity and connectivity



# WREA project timeline (2015/18)



LOVE EVERY DROP. PUT WATER AT THE HEART OF A WHOLE NEW WAY OF LIVING.

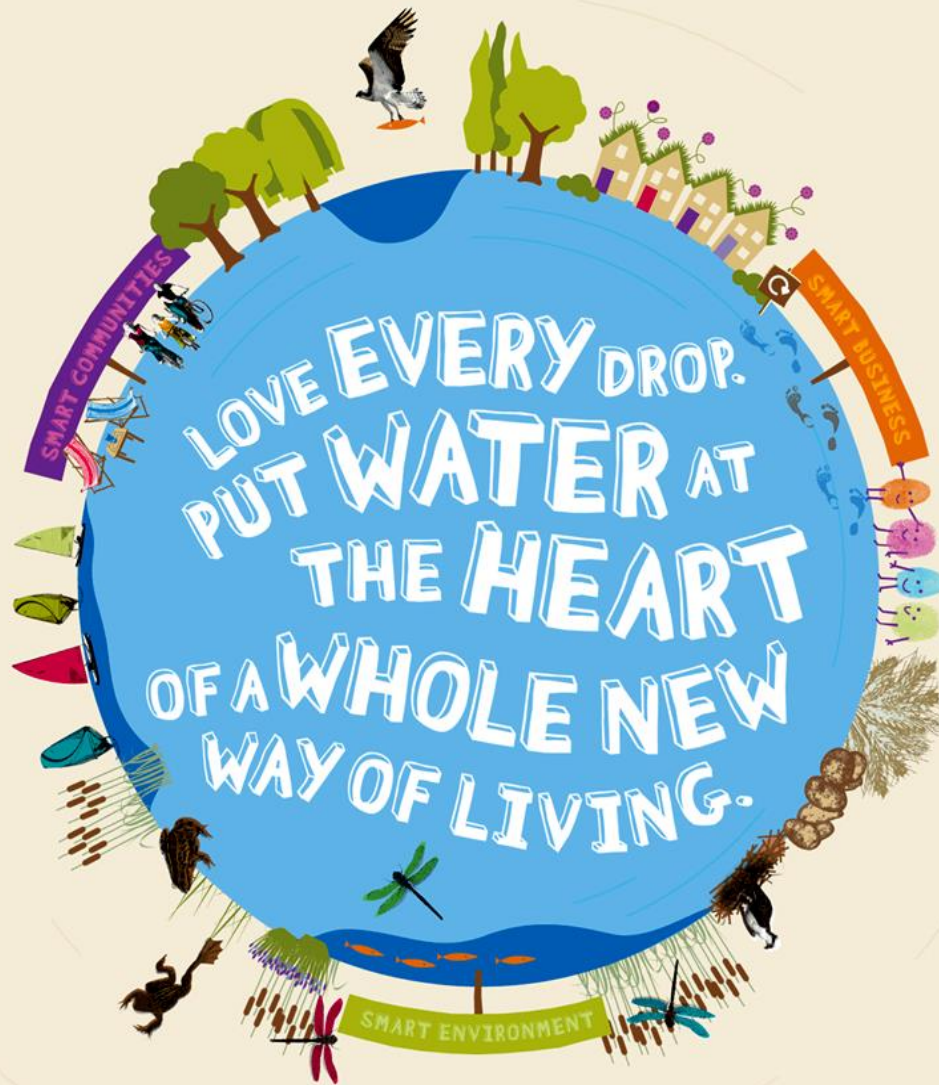


# Summary



- In **East Anglia**, our ability to maintain the balance between water supply and demand will be challenged by a combination of **climate change**, **growth** and **multi-season drought**
- In response, the collaborative Water Resources East Anglia (WREA) project has been set-up
- For water companies, the WREA will deliver a **reliable**, **affordable** and **sustainable** system of supply which is **resilient** to the effects of climate change, growth and multi-season drought
- A **draft multi-company, multi-sector long-term water resource management strategy** is expected in **August 2017** → the aim is to produce an agreed, **final version** by **December 2017**

LOVE EVERY DROP. PUT WATER AT THE HEART  
OF A WHOLE NEW WAY OF LIVING.



love  
every  
drop.



anglianwater

# Demography Update

SSPLOG November 2015

Ben Corr

Greater London Authority



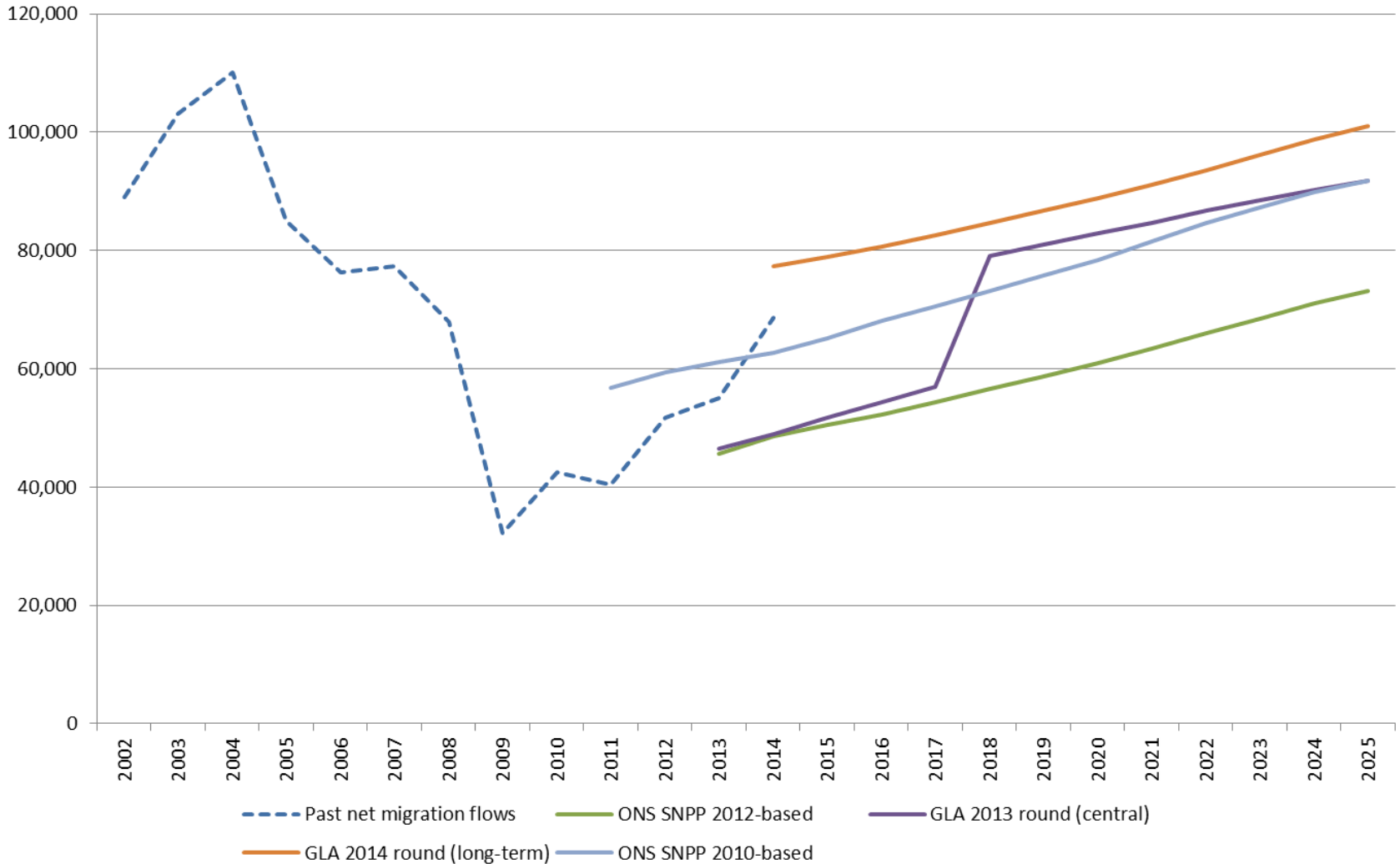
# Content

- Quick round up of recent migration trends
- Update on GLA planned model development work



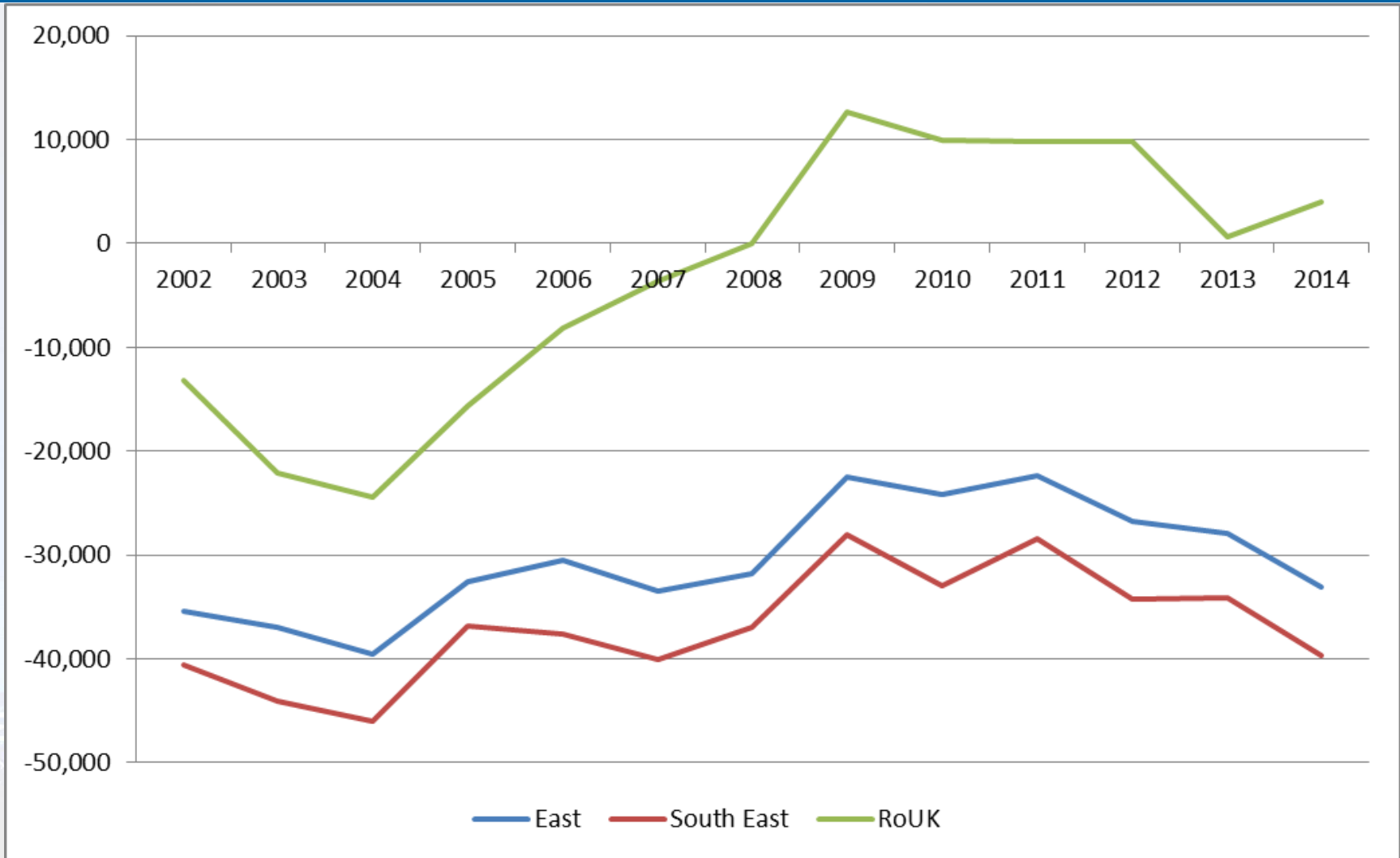
# 2014 mid-year estimates

## Net domestic outmigration - London

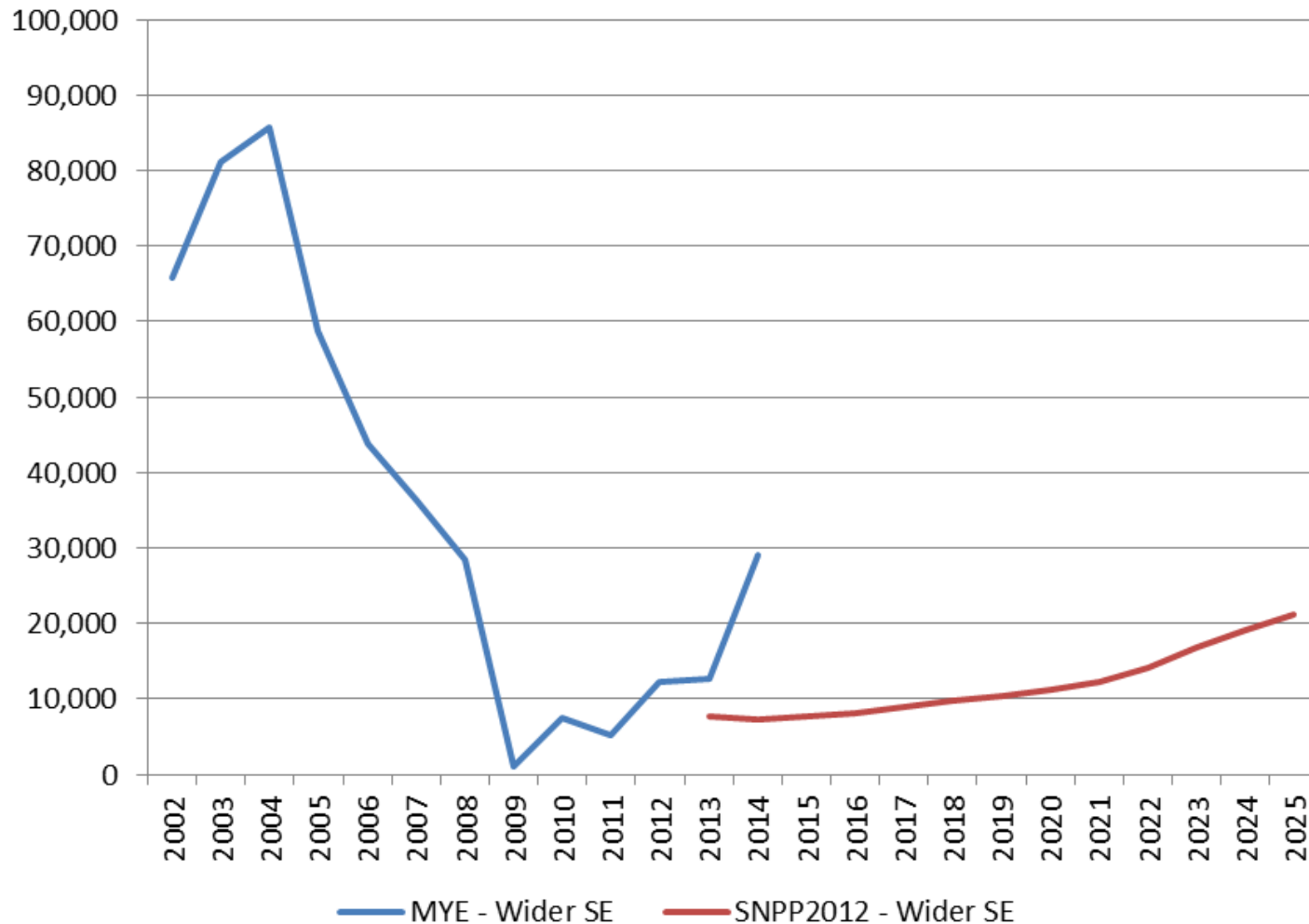


# Annual migration series

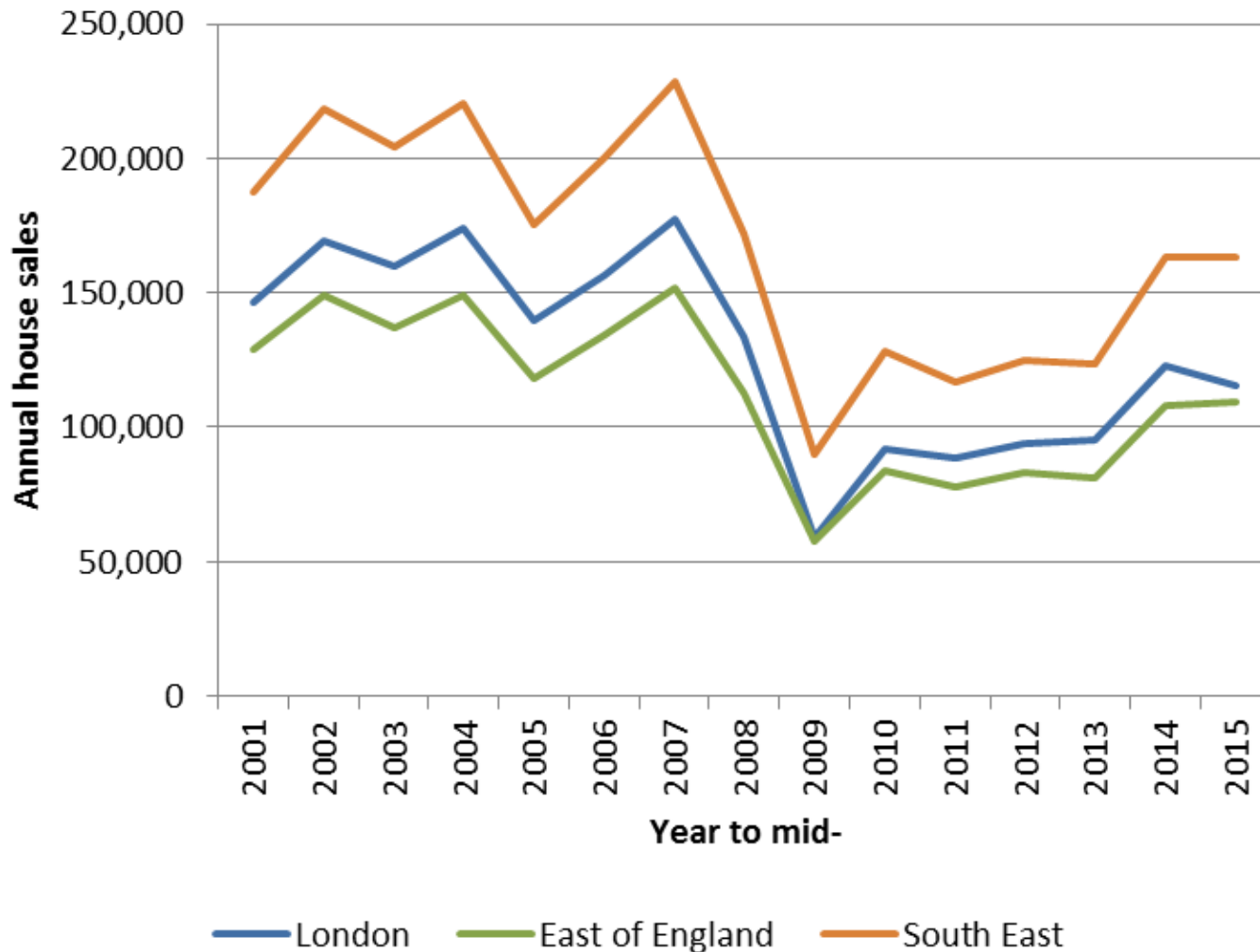
## London net domestic migration



# Wider South East - net domestic outmigration



# Annual house sales in south east



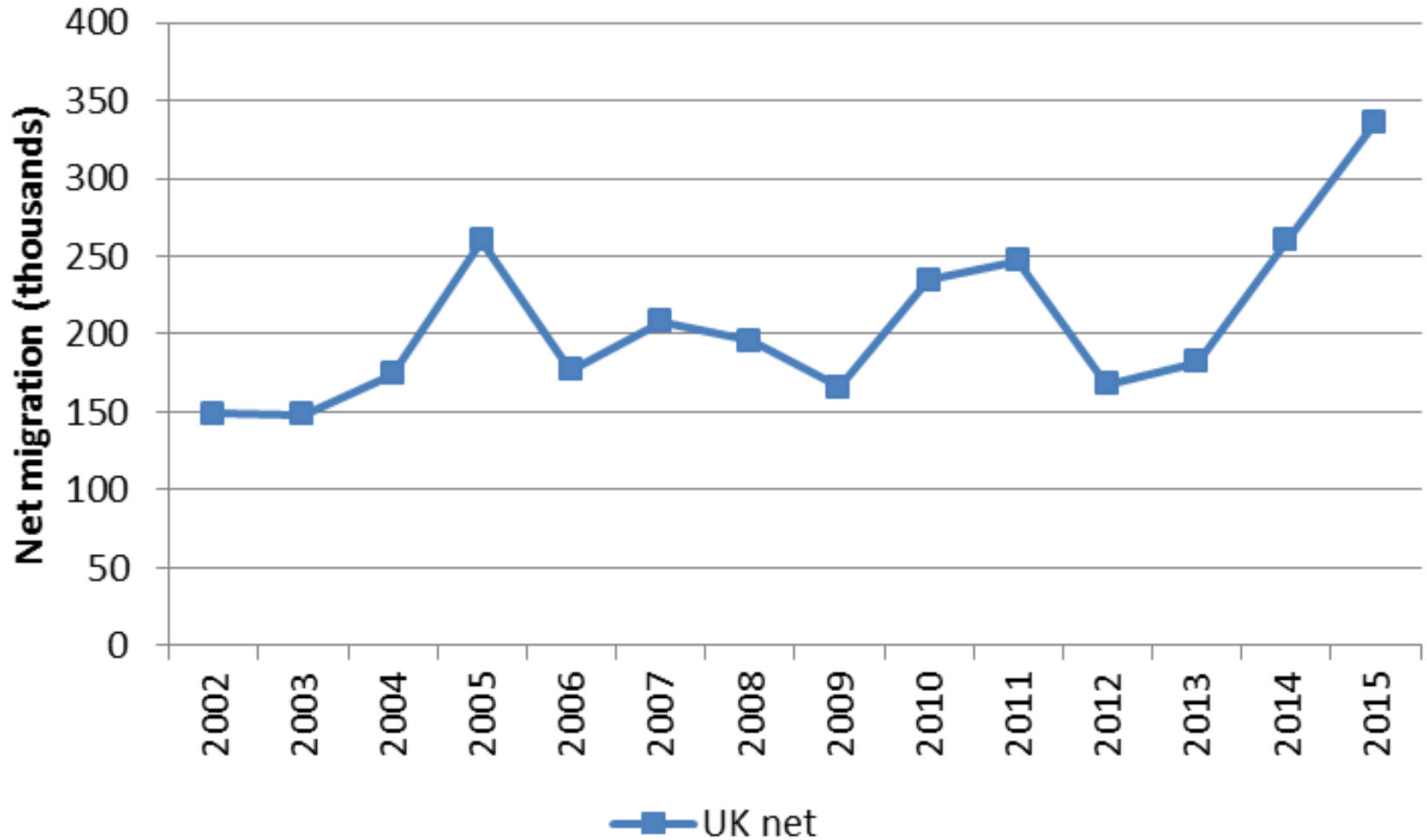


# New migration data incoming

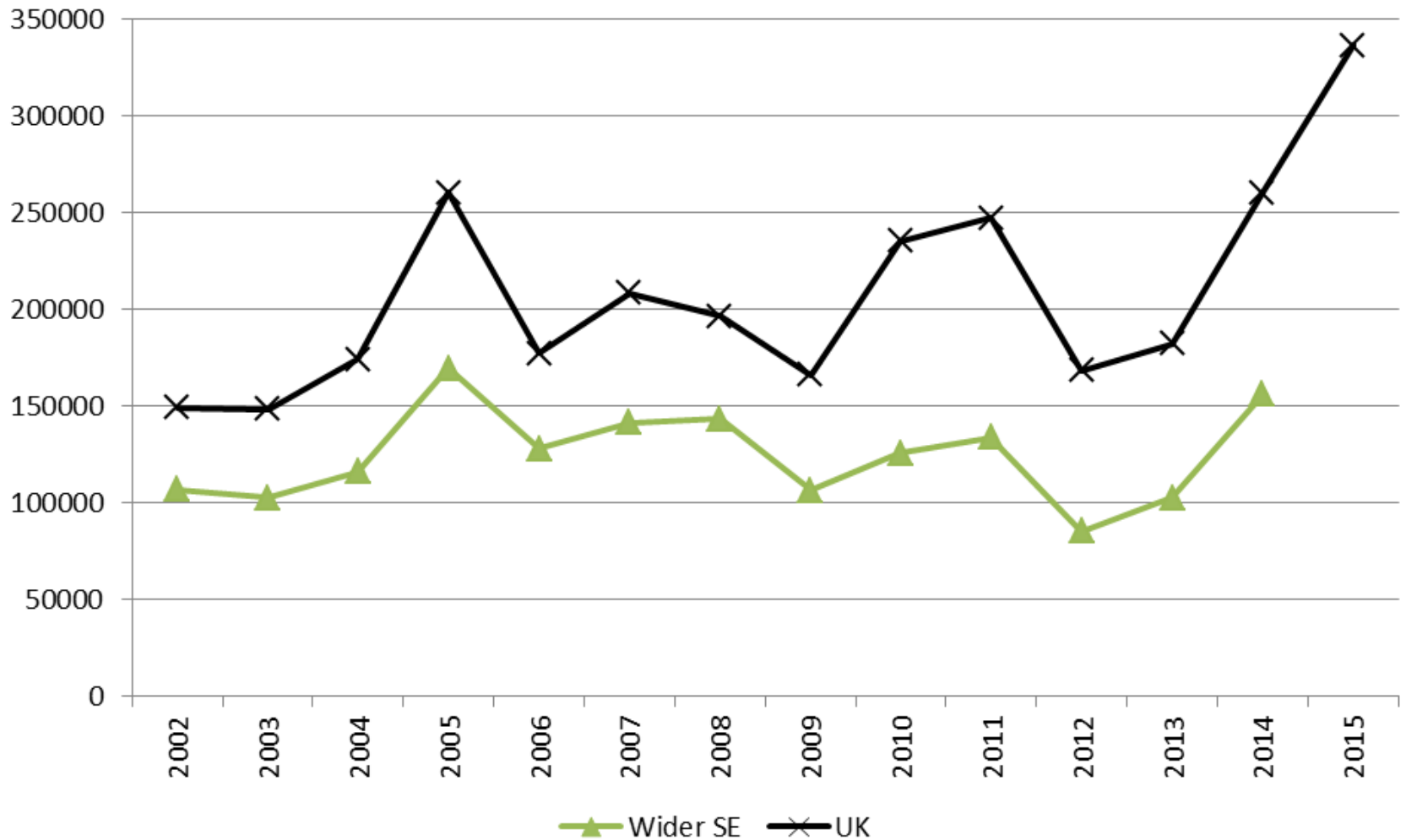
- Analysis of pre/post crash migration hampered by lack of consistent data
- GLA recently commissioned full SYA/gender flow data for 2002-2011 from ONS
- Expect delivery before Christmas



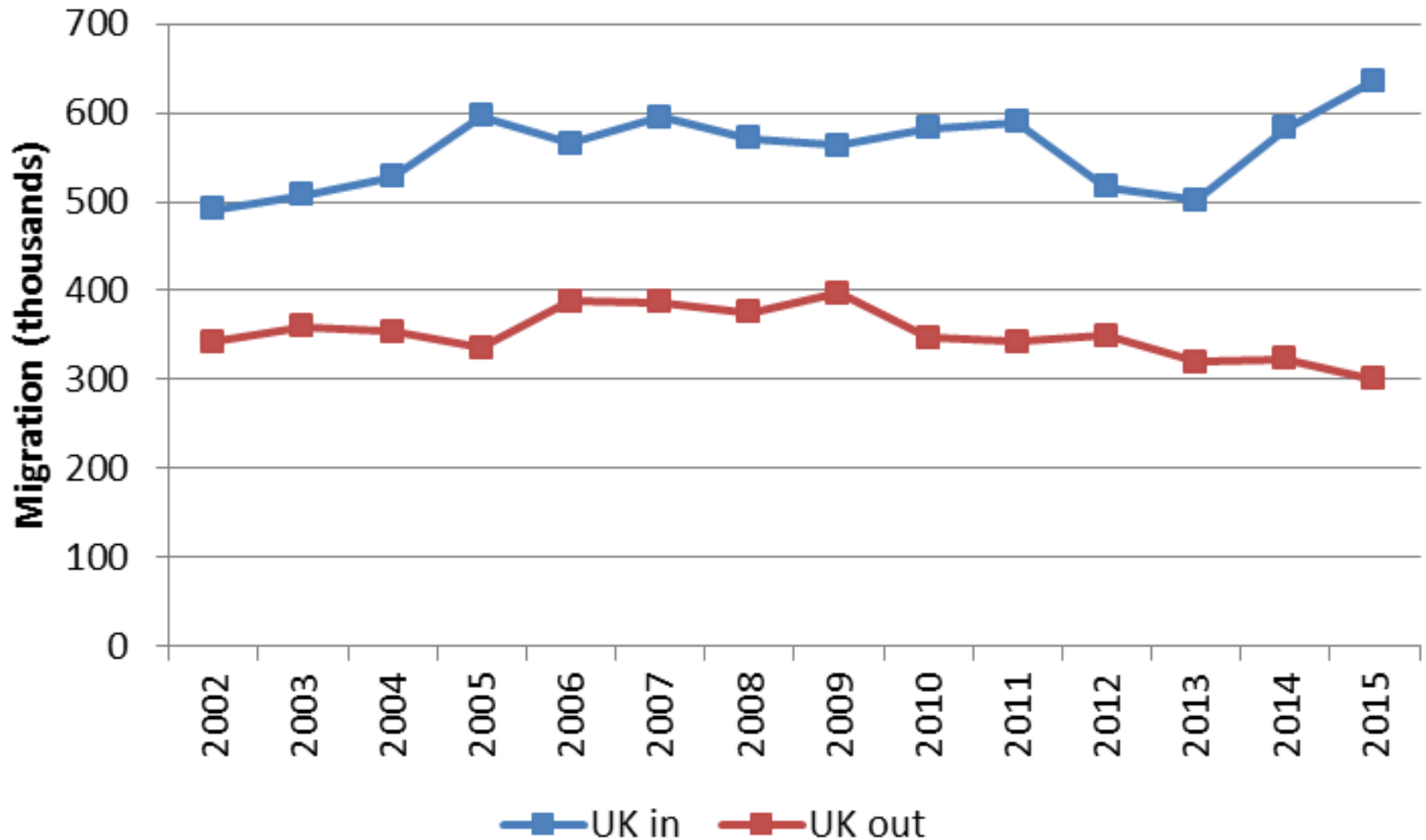
# UK net international migration



# Net international migration UK vs Wider SE



# UK international migration



# GLA model development work

- GLA expanding scope of existing models
- Current models limited to 33 London LAs
- Initial work will allow production of consistent trend-based population projections for all LAs in England



# GLA model development work

- Methodology similar to that used by ONS for SNPP
- Will have control of assumptions and parameters
- Allow exploration of projection scenarios, e.g. based on longer term migration trends



# GLA model development work

- Intention to make methodologies and assumptions transparent to officers in wider SE
- Provide baseline set of projections consistent with ONS/DCLG approach
- Help inform and facilitate additional modelling work



# Contact

Ben Corr

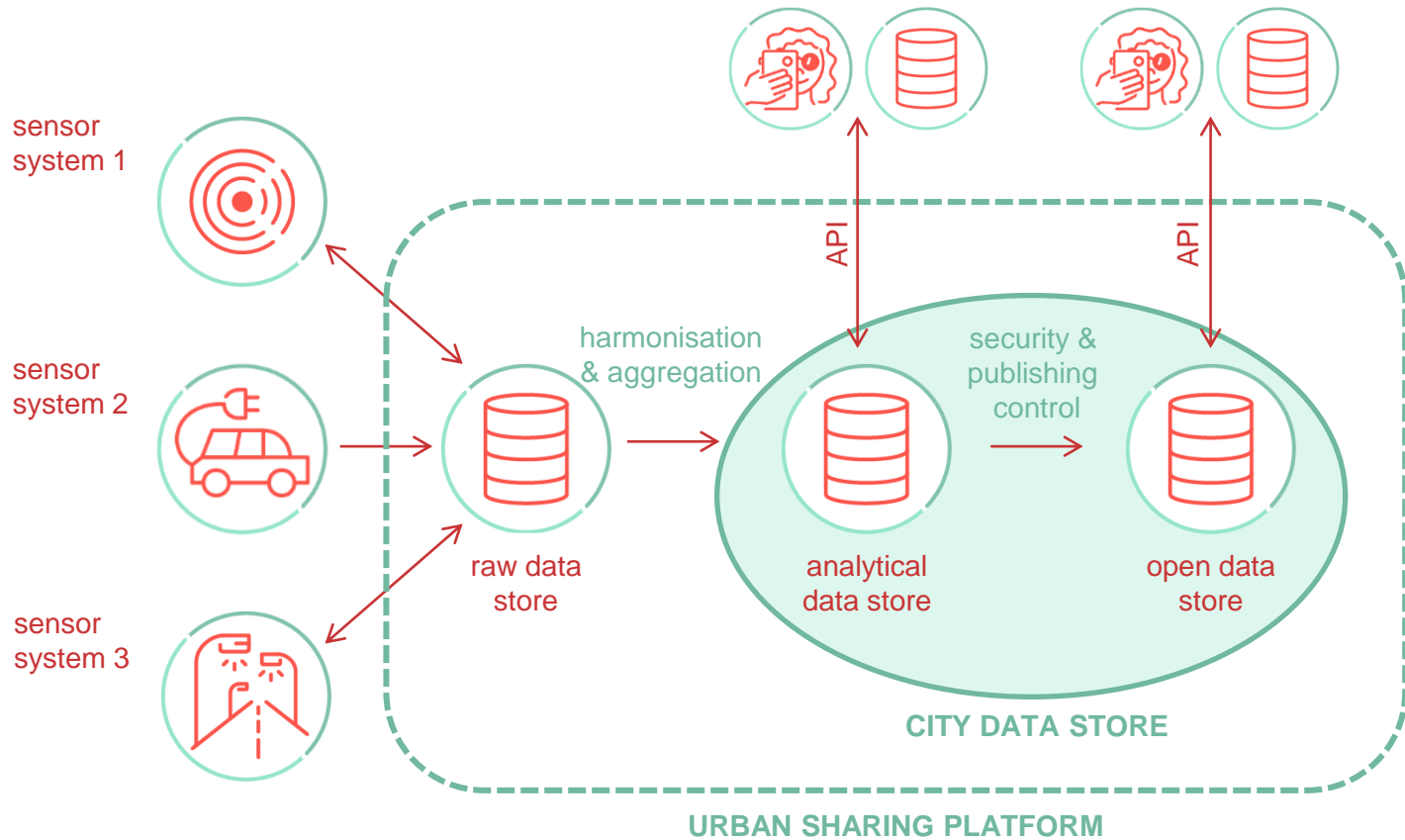
[ben.corr@london.gov.uk](mailto:ben.corr@london.gov.uk)

[demography@london.gov.uk](mailto:demography@london.gov.uk)

<http://data.london.gov.uk/dataset/2014-round-population-projections>



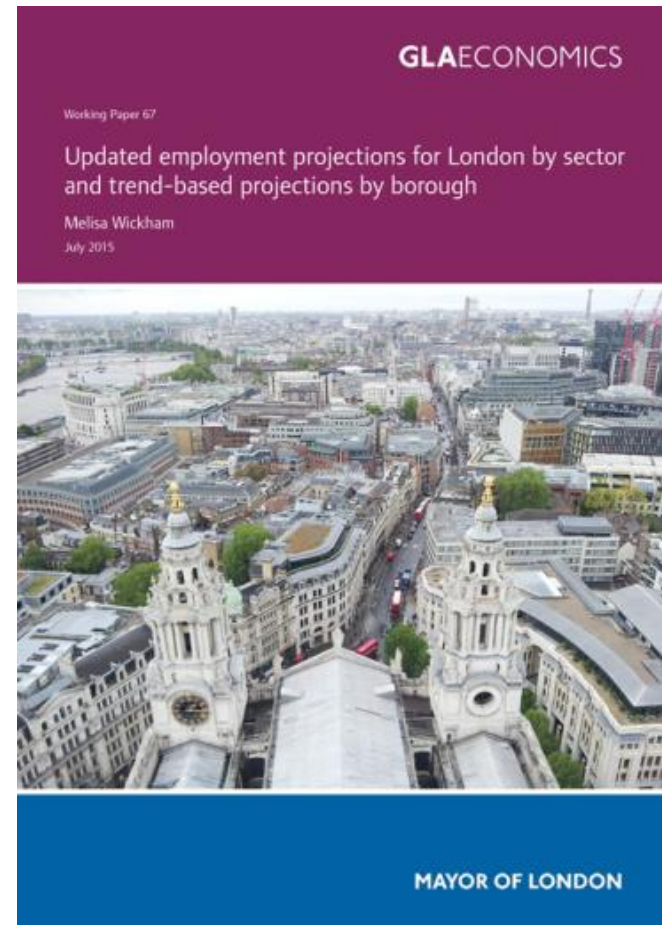
# URBAN SHARING PLATFORM



# **Employment Projections – towards the next London Plan**

**30 November 2015**

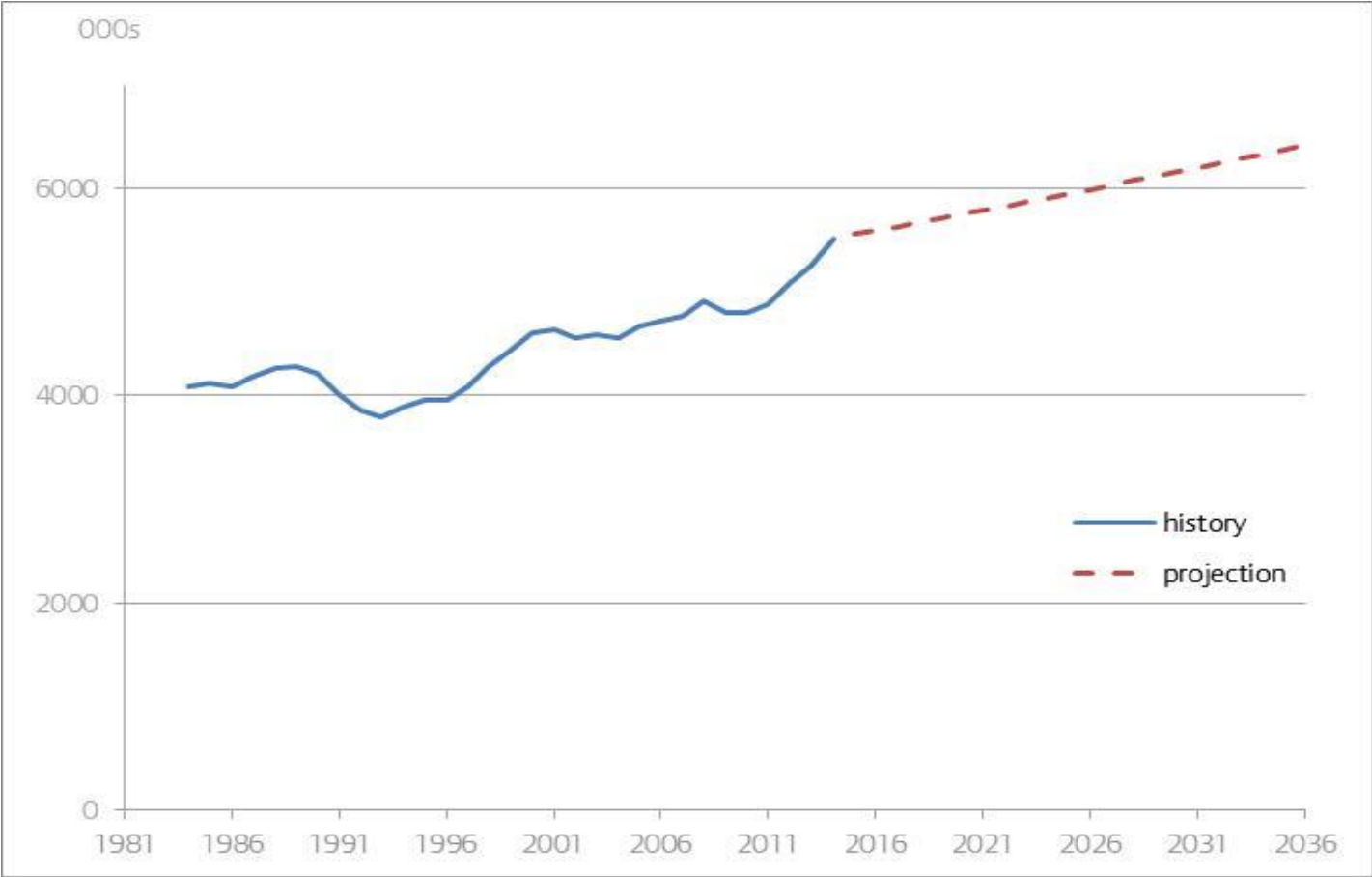
**Mike Hope**



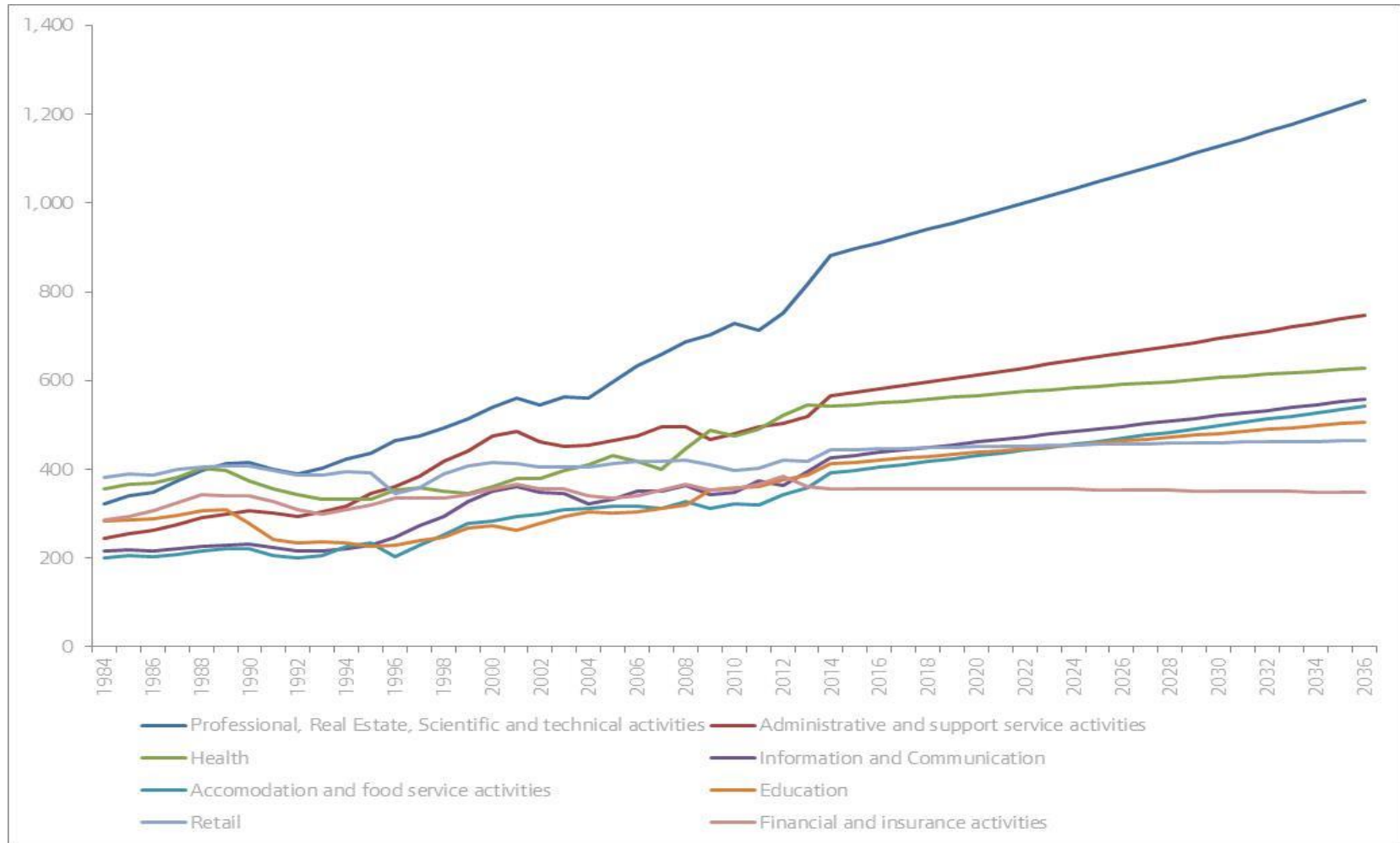
# History

- GLA Economics has been producing employment projections for more than ten years
  - Most recently in July 2015
  - The 2013 projections supported the adopted March 2015 Further Alterations to the London Plan (FALP)
- Full history is available on the GLA Economics publication webpage  
<http://www.london.gov.uk/priorities/business-economy/publications/gla-economics>
- The data and reports for the 2011, 2013 and 2015 projections are on the London Data Store  
<http://data.london.gov.uk/dataset/gla-employment-projections>
- Projections used by a range of stakeholders including GLA, TfL, LEP, London boroughs, ORR and consultancies
- The intention is to publish updated projections in 2016 to support the development of the next London Plan, and in 2017 to support the next, hopefully adopted, London Plan

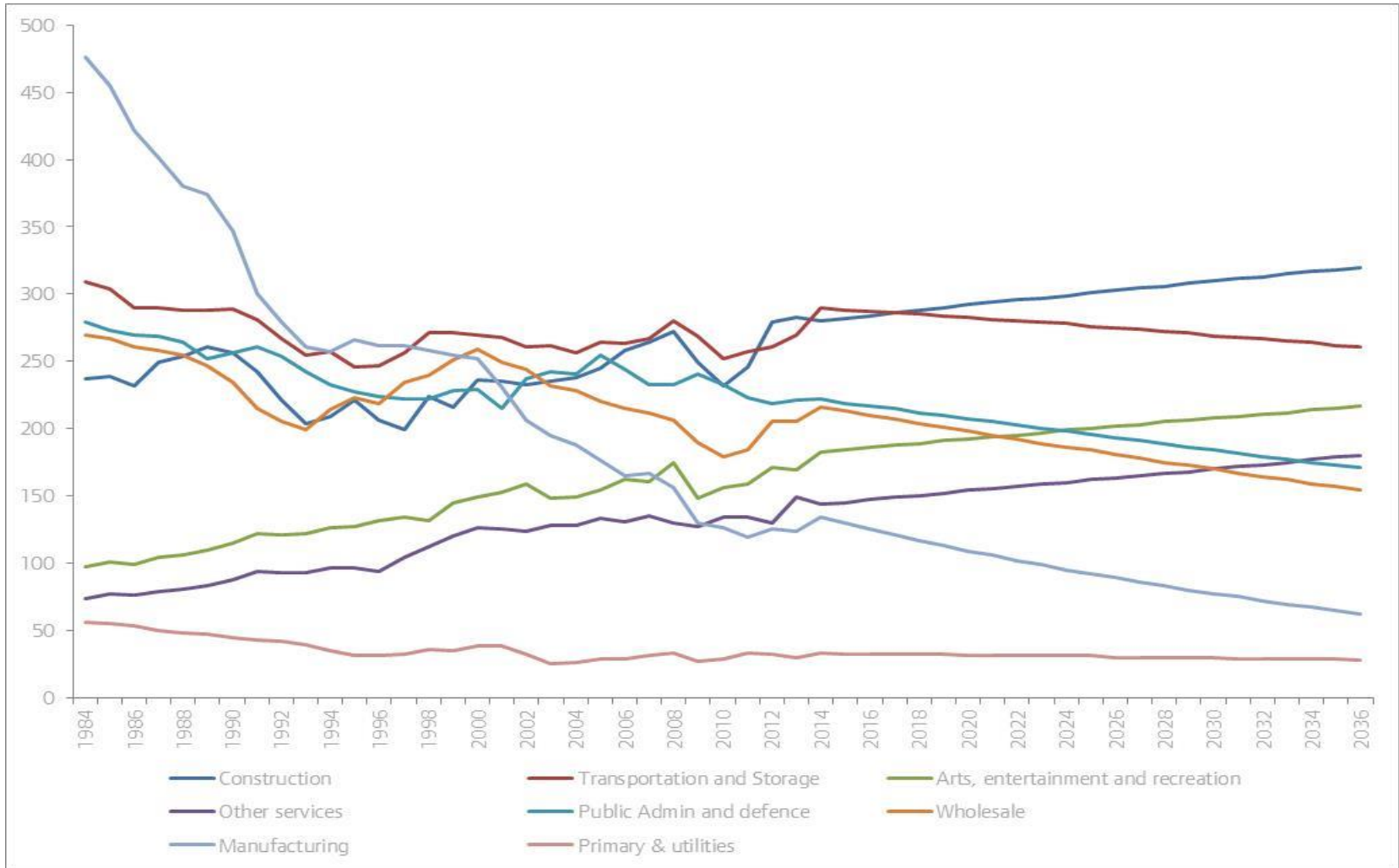
# Latest Projections: London Workforce Jobs



# Latest Projections: London Sector Workforce Jobs – larger sectors



# Latest Projections: London Sector Workforce Jobs – smaller sectors

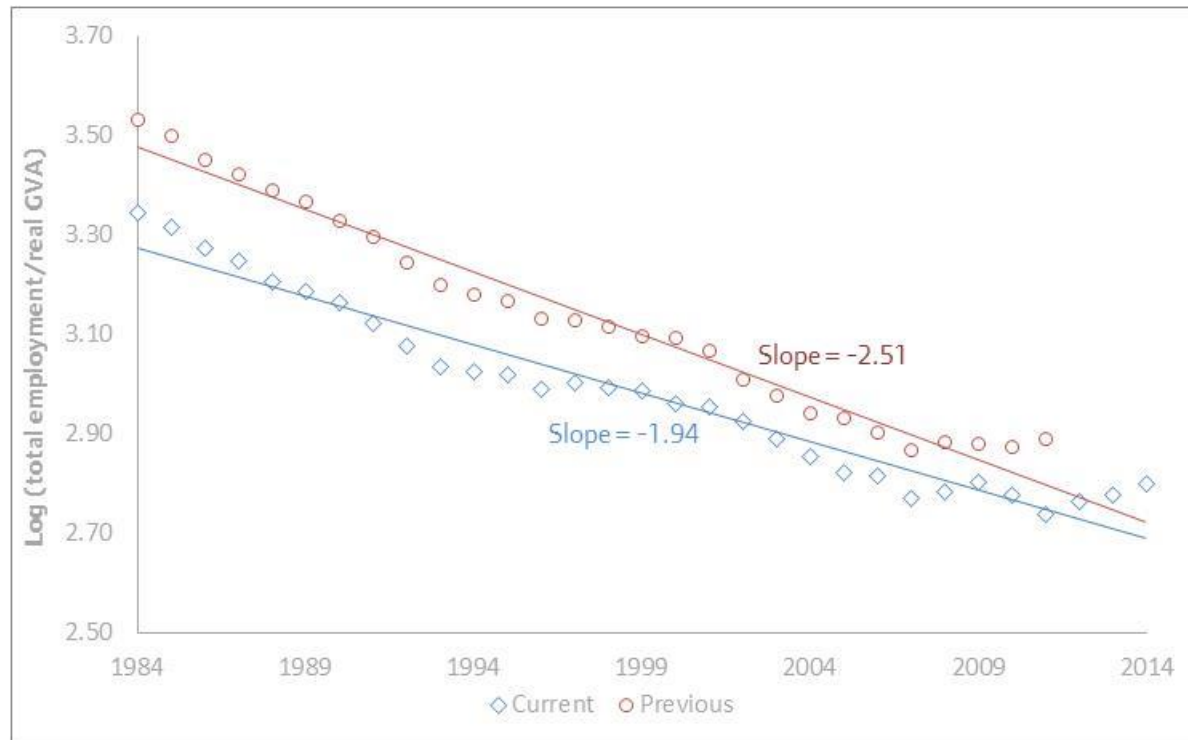


# Latest Projections: London Borough Workforce Jobs

	Employment growth per annum with London output growth of 2.5% per annum	Annual average growth in jobs with London output growth of 2.5% per annum
Barking and Dagenham	-0.89%	-470
Barnet	0.46%	760
Bexley	0.36%	300
Brent	0.19%	250
Bromley	0.62%	830
Camden	0.58%	2,240
City of London	0.56%	2,780
Croydon	-0.70%	-840
Ealing	0.30%	470
Enfield	0.16%	210
Greenwich	0.14%	140
Hackney	0.28%	380
Hammersmith and Fulham	1.09%	1,830
Haringey	0.16%	130
Harrow	0.24%	210
Havering	0.29%	270
Hillingdon	0.78%	1,900
Hounslow	0.54%	990
Islington	1.12%	2,950
Kensington and Chelsea	0.73%	1,140
Kingston-upon-Thames	0.06%	50
Lambeth	0.51%	960
Lewisham	0.06%	50
Merton	0.58%	620
Newham	0.94%	1,160
Redbridge	0.55%	500
Richmond-upon-Thames	0.79%	790
Southwark	1.56%	4,940
Sutton	0.16%	130
Tower Hamlets	2.56%	9,490
Waltham Forest	0.64%	580
Wandsworth	0.84%	1,210
Westminster, City of	0.50%	3,870
<b>London total</b>	<b>0.69%</b>	<b>40,830</b>

# Projections: the challenge to interpret underlying trends

Relationship between output and jobs has shifted because of ONS data revisions to output, and not clear to what extent slowdown in productivity since 2008 is permanent





# Projections: the challenge to interpret underlying trends

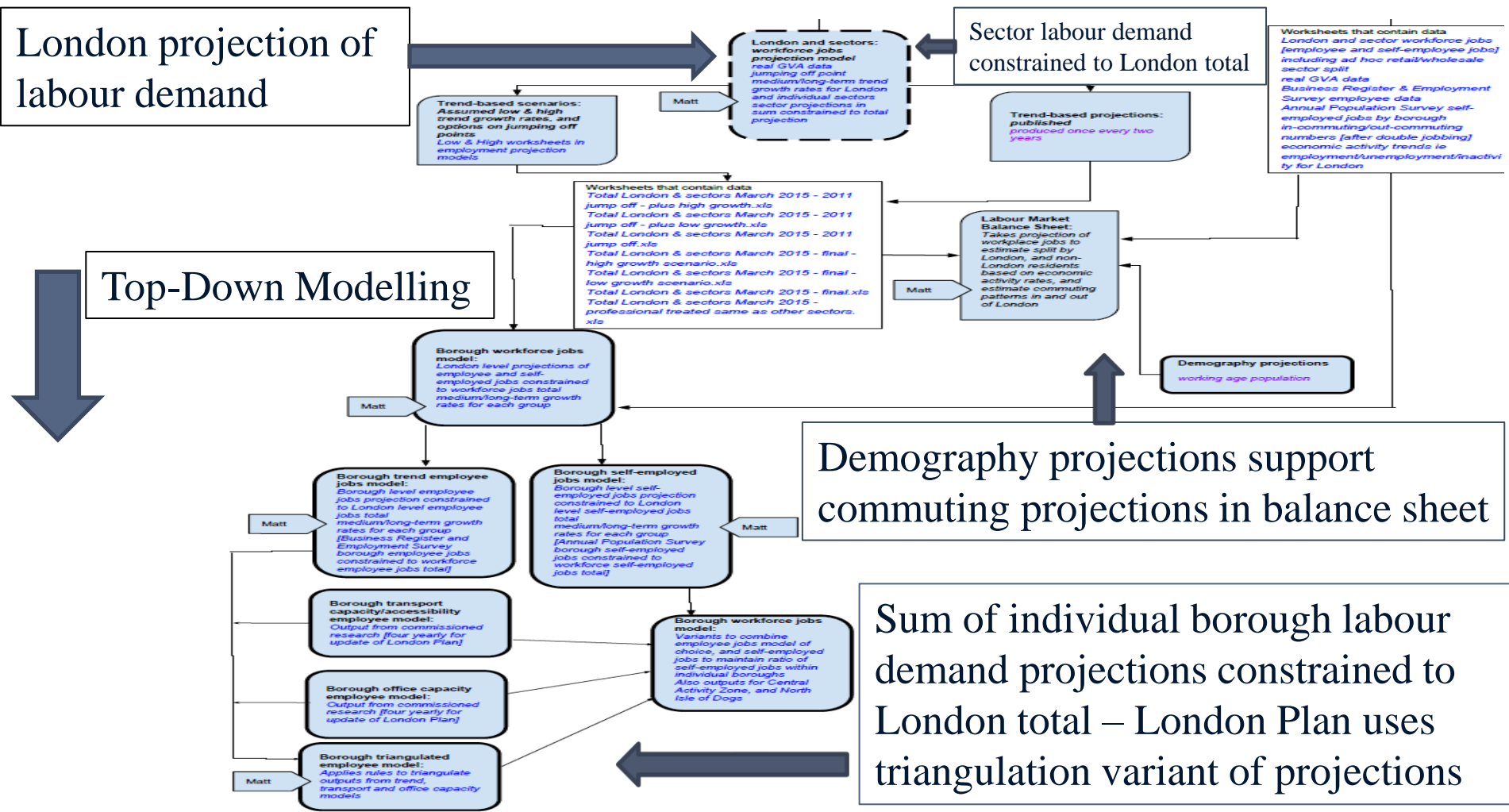
A range of options for projections were considered

	2036 employment level (millions)	Per annum projected employment growth (2014-2036)	
		average %	level
Historic 1984 to 2014	-	1.00	47,540
Historic 1984 to 2011	-	0.65	29,010
<b>Central growth assumption (2.5% pa)</b>			
Central scenario, 2014 jump-off	6.42	0.69	40,830
2011 jump-off	5.73	0.17	9,640
<b>High growth assumption (2.9% pa)</b>			
2014 jump-off	6.99	1.08	66,930
2011 jump-off	6.25	0.56	32,950
<b>Low growth assumption (2.1% pa)</b>			
2014 jump-off	5.89	0.29	16,790
2011 jump-off	5.26	-0.22	-11,840

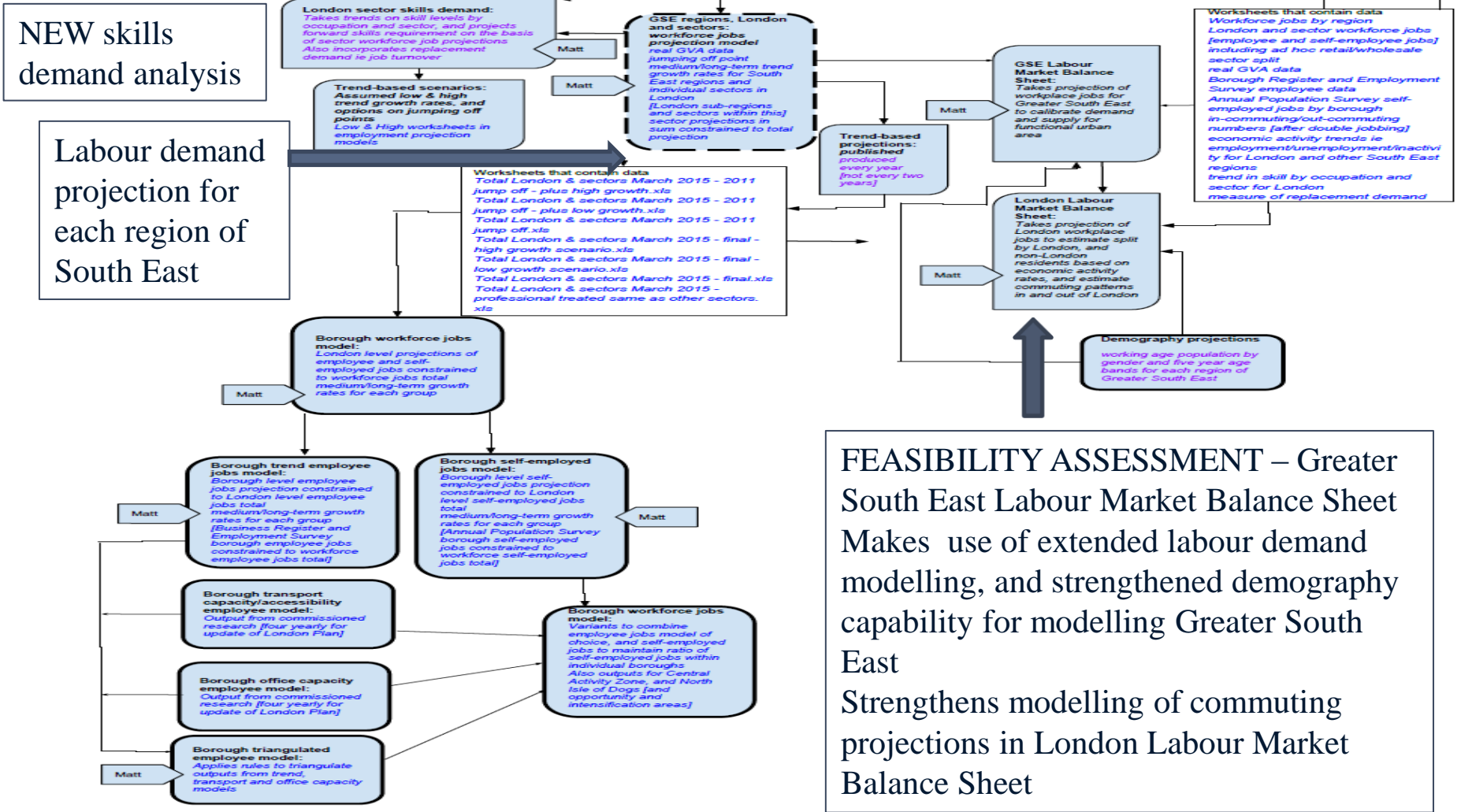
# Developments for next set of projections

- Develop a back series of output and employment data to 1971
  - Intention is to gain a better handle on underlying trends and it will include the recession at the end of the 1970s
- Incorporate modelling on Witan platform
  - This is an open data, open source platform on which the demography projections are also being built
- Investigate feasibility of extending modelling to Greater South East
  - Functionality of Witan platform will facilitate model development, and enable stronger integration with demography projections

# Witan Stage 1 – capture current approach



# Witan Stage 2 – extend modelling



**FEASIBILITY ASSESSMENT – Greater South East Labour Market Balance Sheet**  
 Makes use of extended labour demand modelling, and strengthened demography capability for modelling Greater South East  
 Strengthens modelling of commuting projections in London Labour Market Balance Sheet

# Approach to investigate feasibility of Greater South East Modelling

- Model labour demand for each region of Greater South East
  - Use established modelling approach for London
- Estimate labour supply for each region
  - use demography projections of working age population by gender and five year age bands for each region and historic employment rates projected forward
- Calibrate demand and supply for functional urban area of Greater South East
  - This is the Greater South East Labour Market Balance Sheet
- Enables stronger modelling of commuting patterns for London Labour Market Balance Sheet

# Summary

- Established approach to development of employment projections for London, its sectors and boroughs
- Supports a range of stakeholders in London
- Methodology and data are published, and so subject to scrutiny
- Modelling approach is top down, and projections for individual boroughs constrained to trend for London
- Recent data has been off historic trend, and there is ongoing work to understand better the trends, and the implications for projections
- The modelling is migrating to the Witan platform which is open source, and will allow stronger integration with demography modelling
- Updated projections towards the next London Plan will be produced in 2016 and 2017
- As part of this model development we are investigating the feasibility of extending the modelling to the Greater South East