



- KEY**
- Application boundary
 - Detailed application boundary
 - Outline application boundary
 - Green belt boundary
- Hard Landscape**
- Surface Materials**
- S01** Surface type 1: Sureset 6mm, Golden Pearl, Resin bound or similar
 - S02** Surface type 2: Self-binding footpath gravel, gold colour by CEDEC or similar
 - S03** Surface type 3: Granitic concrete setts, 80mm depth x 150mm coursed x lengths of 300mm module laid in a stretcher bond (carriageway) 60mm x 150-400mm coursed x 150-400mm lengths laid in random coursed (footpath), as Hardscape 'Kellen, Tagenta B,C,D and E, ratios dependant on location, breccia finish or similar
 - S04** Surface type 4: Granitic concrete setts, laid in a stretcher bond, 80mm depth x 150mm coursed x lengths of 300mm (carriageway) 60mm depth x 150mm coursed x lengths of 300mm (footpath) as Hardscape 'Kellen, Nemaro Argentio, breccia finish or similar
 - S05** Surface type 5: Granitic concrete slabs laid in random coursed, 60mm depth x 150-400mm coursed x lengths of between 200mm - 600mm as Hardscape 'Kellen, Bianco and Bianco 630, breccia finish or similar
 - S06** Surface type 6: Granitic concrete setts laid in a stretcher bond, 80mm depth x 150-300mm coursed x lengths of between 150 - 300mm as Hardscape 'Kellen, Bianco and Bianco 630, breccia finish or similar
 - S07** Surface type 7: Reinforced grass surface, planted with planting type 1 (PT1), Golpla by Geosynthetics or similar
- Kerb type**
- K01** Kerb type 1: Proposed kerb - Pre-cast concrete 255mm x 145mm x 915mm, saxon kerb laid flush on side as Marshalls or similar. 60mm upstand where (u) follows.
- Edging type**
- E01** Edging type 1: Pre-cast concrete, 63mm x 155mm Natural buff conservation edging as Marshalls or similar
 - E02** Edging type 2: Steel edging, Everedge classic, slate, by Everedge or similar
- Tactile paving**
- TP1** Tactile paving 1: Tactile Blister paving, 400x400x65, Textured Natural by Marshalls or similar
- Street furniture and features**
- PS1** Parking signage 1: Bespoke 60x400x400 parking signage
 - PS2** Parking signage 2: Bespoke 60x400x400 parking signage
 - PS3** Parking signage 3: Bespoke 60x400x400 parking signage
 - BT1** Bench type 1: Escofet Banco Sócrates 360 Black or similar
 - BT2** Bench type 2: Escofet Banco Sócrates 240 Black or similar
 - BT3** Bench type 3: Escofet Cubo Sócrates 60 Black or similar
 - NP1** Natural play equipment 1: Informal features for imaginative natural play and incidental seating to include logs, boulders, trees, changes in level and lawn or similar
 - BO1** Bollard type 1: Hardwood timber 1000mm 250mm x 250mm top section by woodscape or similar
 - SS1** Sheffield stands 1: Sheffield stands by Falco or similar located in an area of S01 (Sureset 6mm, COLOUR, Resin bonded or similar)
 - TG1** Tree grill type 1: Heavy duty pre-fabricated unit with paving finish. Paved top to match surrounding area, 'Castle' by Green Blue Urban or similar.
 - PA1** Public art feature 1: Proposed bespoke public art feature
 - IH1** Insect hotels 1: Bespoke insect hotel in durable corten framework, to form habitat for insects and small amphibians.
 - BB1** Bird boxes 1: Pre-fabricated bird boxes to be secured to suitable trees.
- Lighting**
- LT1** Lighting type 1: Tapered column with adjustable luminaires, Sulex Candelabra Olivio Medio LED Triple or similar
- Boundary Treatment**
- RT1** Railing type 1: Proposed bespoke 2400mm x 1100mm steel railings, flat and circular galvanised bar construction, painted RAL 7201, with 50mm circular hardwood timber handrail or similar.
- Structures**
- FS1** Floating structure 1: New location of existing pontoon with potential extensions. Existing Jetty to be extended incorporating new access points
 - FS2** Floating structure 2: Modular floating rafts, "Floating Riverbanks" by Biomatrix Water or similar.
 - BS1** Bridge structure 1: Proposed footbridge to WWM Architects specification. (see notes)
 - BN1** Bin store 1: Proposed store for Boater's bins. Store to A&M's specification.
- Soft Landscape**
- Groundcover planting**
- EP1** Existing planting 1: Existing planting to the edge of the flood relief channel to be retained where possible.
 - PT1** Planting type 1: Native wildflower and grassland planting - Incorporating nectar rich species - species may include - Ajuga, Symphytum, Anthriscus, Ranunculus, Lysimachia, Festuca, Bellis, Luzula, Glechoma, Filipendula, Carex, Hypericum, Lychnis, Prunella, Stellaria, Gallium, Daucus, Fragaria.
 - PT2** Planting type 2: Shrub planting - species may include: Hypericum, Lonicera, Potentilla, Astilbe, Carex, Choisya, Corylus, Euonymus, Festuca, Hebe, Prunus.
- Floating planting type**
- FP1** Floating planting type 1: modular floating rafts by Biomatrix Water or similar. Native species mix to include - Carex, Digitalis, Eupatorium, Geum, Filipendula, Juncus, Lychnis, Lycopodium, Lysimachia, Lythrum, Mentha, Silene, Typha and Veronica
- Hedging**
- HT1** Hedge type 1: Guidance hedging - native species to include - Crataegus, Prunus spinosa, Viburnum opulus, Cornus sanguinea, Fagus sylvatica, Acer campestre. Heights ranging from 1100mm to 1800mm.
 - HT2** Hedge type 2: Division Hedging - Fagus sylvatica Heights ranging from 500mm to 1400mm.
- Trees**
- ET1** Existing Tree 1: Existing trees, to be retained where possible.
 - TT1** Tree type 1: Avenue Trees - Platanus acerifolia, 40-45cm, height 10m, Mature. All TT1 trees to use TG1 tree pit.
 - TT2** Tree type 2: Specimen Tree - Salix babylonica 20-25cm, height 5m, Semi-mature
 - TT3** Tree type 3: Fastigate Trees - Quercus robur 'koster' fastigiata, 20-25cm, height 5m, Semi-mature
 - TT4** Tree type 4: Grouped tree planting - species mix to include - Alnus glutinosa, 20-25cm, height 6m, Semi-mature - Carpinus Betulus, 20-25cm, height 6m, Semi-mature and Pyrus communis, 20-25cm, height 5m, Semi-mature. Selected trees to be clear stem up to a height of 2400mm.

NOTES:

- Soft landscaped areas to be formed of at least 600mm of clean imported cover separated from the Made Ground with a teram (or similar) membrane demarcation layer.
- An explanation and description of the landscape features are provided within the accompanying Design and Access Statement
- Any changes to the specification should be discussed and accepted by Landscape Projects.
- Final selection of materials, tree and plant species and street furniture elements subject to detailed testing and assessment and procurement conditions
- Areas outside of the detailed application boundary are illustrative only.
- Proposed pedestrian footbridge shown for illustrative purposes only (subject to future approval)
- Outline approval is sought for a bridge and bridge landing in this location - see parameter plan THGL/234; Detailed Approval is sought for Phase 1 landscape works - see phase one plan 435.012.
- Landscape adjustments may be required in response to the detailed design of the pedestrian footbridge.
- Where outline and detailed boundaries overlap, approval is being sought for both consent and detailed consent in those areas to accommodate for example, but not limited to, facilitating works.
- Underground pumping station shown in illustrative form only, Engineer to advise, see drawing no. 33510-RAM-XX-00-DR-Z-111
- Landscaping shown within the outline application boundary is for illustrative purposes only.



KEY

- Application boundary
 - - - Detailed application boundary
 - - - Outline application boundary
 - Green belt boundary
- Hard Landscape**
- Surface Materials**
- S01** Surface type 1: Sureset 6mm, Golden Pearl, Resin bound or similar
 - S02** Surface type 2: Self-binding footpath gravel, gold colour by CEDEC or similar
 - S03** Surface type 3: Granite concrete setts 80mm depth x 150mm coursed x lengths of 300mm module laid in a stretcher bond (carriageway) 60mm x 150-400mm coursed x 150-400mm lengths laid in random coursing (footpath), as Hardscape 'Kellen, Tagenta B, C, D and E, ratios dependant on location, breccia finish or similar
 - S04** Surface type 4: Granite concrete setts, laid in a stretcher bond. 80mm depth x 150mm coursed x lengths of 300mm (carriageway) 60mm depth x 150mm coursed x lengths of 300mm (footpath) as Hardscape 'Kellen, Nemaro Argento, breccia finish or similar
 - S05** Surface type 5: Granite concrete slab laid in random coursing. 60mm depth x 150-400mm coursed x lengths of between 200mm - 600mm as Hardscape 'Kellen, Bianco and Bianco 630, breccia finish or similar
 - S06** Surface type 6: Granite concrete setts laid in a stretcher bond. 80mm depth x 150-300mm coursed x lengths of between 150 - 300mm as Hardscape 'Kellen, Bianco and Bianco 630, breccia finish' or similar
 - S07** Surface type 7: Reinforced grass surface, Golpla by Geosynthetics or similar
- K01** Kerb type 1: Proposed flush kerb - Pre-cast concrete 255mm x 145mm x 915mm, saxon kerb laid on side as Marshalls or similar. Proposed 60mm upstand where (u) follows.
 - E01** Edging type 1: Pre-cast concrete. 63mm x 155mm Natural buff conservation edging as Marshalls or similar
 - E02** Edging type 2: Steel edging, Everedge classic, slate, by Everedge or similar
 - TP1** Tactile Paving 1: Tactile Blister paving, 400x400x65, Textured Natural by Marshalls or similar
 - PS1** Parking signage 1: Bespoke 60x400x400 parking signage
 - PS2** Parking signage 2: Bespoke 60x400x400 parking signage
 - PS3** Parking signage 3: Bespoke 60x400x400 parking signage
- Street furniture and features**
- BT1** Bench type 1: Escofet Banco Sócrates 360 Black or similar
 - BT2** Bench type 2: Escofet Banco Sócrates 240 Black or similar
 - BT3** Bench type 3: Escofet Cubo Sócrates 60 Black or similar
 - NP1** Natural Play Equipment 1: Informal features for imaginative natural play to include logs, boulders, trees, changes in level and lawn or similar
 - BO1** Bollard Type 1: Hardwood timber 1000mm 250mm x 250mm top section by woodscape or similar
 - SS1** Sheffield stands 1: Sheffield stands by Falco or similar located in an area of S01 (Sureset 6mm, COLOUR, Resin bonded or similar)
 - TG1** Tree grill type 1: Heavy duty pre-fabricated unit with paving finish. Paved top to match surrounding area, 'Castle' by Green Blue Urban or similar.
 - PA1** Public art feature 1: Proposed bespoke public art feature
 - IH1** Insect Hotels 1: Bespoke insect hotel in durable corten framework, to form habitat for insects and small amphibians.
- Lighting**
- LT1** Lighting type 1: Adjustable column mounted luminaires, Sulex Candelabra Olivio Medio LED Triple or similar
- Boundary Treatment**
- RT1** Railing type 1: Proposed bespoke 2400mm x 1100mm steel railings, flat and circular galvanised bar construction, painted RAL 7201, with 50mm circular hardwood timber handrail or similar.
- Structures**
- FS1** Floating Structure 1: New location of existing pontoon with potential extensions. Existing Jetty to be extended incorporating new access points
 - FS2** Floating Structure 2: Modular floating rafts, "Floating Riverbanks" by Biomatrix Water or similar.
 - BS1** Bridge Structure 1: Proposed footbridge to WWM Architects specification. (see notes)
- Soft Landscape**
- Groundcover planting**
- EP1** Existing planting 1: Existing planting to the edge of the flood relief channel to be retained where possible.
 - PT1** Planting type 1: Native wildflower and grassland planting - Incorporating nectar rich species - species may include - Ajuga, Symphytum, Anthriscus, Ranunculus, Lysimachia, Festuca, Bellis, Luzula, Glechoma, Filipendula, Carex, Hypericum, Lychnis, Prunella, Stellaria, Galium, Daucus, Fragaria.
 - PT2** Planting type 2: Shrub planting - species may include: Hypericum, Lonicera, Potentilla, Astilbe, Carex, Choisya, Corylus, Euonymus, Festuca, Hebe, Prunus.
- Hedging**
- HT1** Hedge type 1: Guidance hedging - native species to include - Crataegus, Prunus spinosa, Viburnum opulus, Cornus sanguinea, Fagus sylvatica, Acer campestre. Heights ranging from 1100mm to 1800mm.
 - HT2** Hedge type 2: Division Hedging - Fagus sylvatica Heights ranging from 500mm to 1400mm.
- Trees**
- ET1** Existing Tree 1: Existing trees within the Flood Relief Channel.
 - TT1** Tree type 1: Avenue Trees - Platanus acerifolia, 40-45cm, height 10m, Mature. All TT1 trees to use TG1 tree pit.
 - TT4** Tree type 4: Grouped tree planting - species mix to include - Alnus glutinosa, 20-25cm, height 6m, Semi-mature, Carpinus Betulus, 20-25cm, height 6m, Semi-mature and Pyrus communis, 20-25cm, height 5m, Semi-mature. Selected trees to be clear stem up to a height of 2400mm.

NOTES:

- Soft landscaped areas to be formed of at least 600mm of clean imported cover separated from the Made Ground with a teram (or similar) membrane demarcation layer.
- An explanation and description of the landscape features are provided within the accompanying Design and Access Statement. Any changes to the specification should be discussed and accepted by Landscape Projects.
- Final selection of materials, tree and plant species and street furniture elements subject to detailed testing and assessment and procurement conditions
- Proposed pedestrian footbridge shown for illustrative purposes only (subject to future approval)
- Outline approval is sought for a bridge and bridge landing in this location - see parameter plan THGL/234; Detailed Approval is sought for Phase 1 landscape works
- Landscape adjustments may be required in response to the detailed design of the pedestrian footbridge.
- Where outline and detailed boundaries overlap, approval is being sought for both consent and detailed consent in those areas to accommodate for example, but not limited to, facilitating works.
- Underground pumping station shown in illustrative form only, Engineer to advise, see drawing no. 33510-RAM-XX-00-DR-Z-111

© All information contained within this document remains copyright of Landscape Projects Ltd. and shall not be reproduced without prior consent.

(1) Do not scale from drawings - use written dimensions only. (2) All dimensions are in millimeters unless noted. (3) All dimensions shall be verified on site before proceeding with the work. (4) Landscape Projects shall be notified of any discrepancies. (5) Engineer to specify all sub-bases. Any below ground construction is indicative.



OB	PL3	2017-01-23	Planning re-submission
RL	PL2	2017-01-20	Car park edit
OB	PL1	2016-05-23	Planning

landscapeprojects

Landscape Architecture & Design

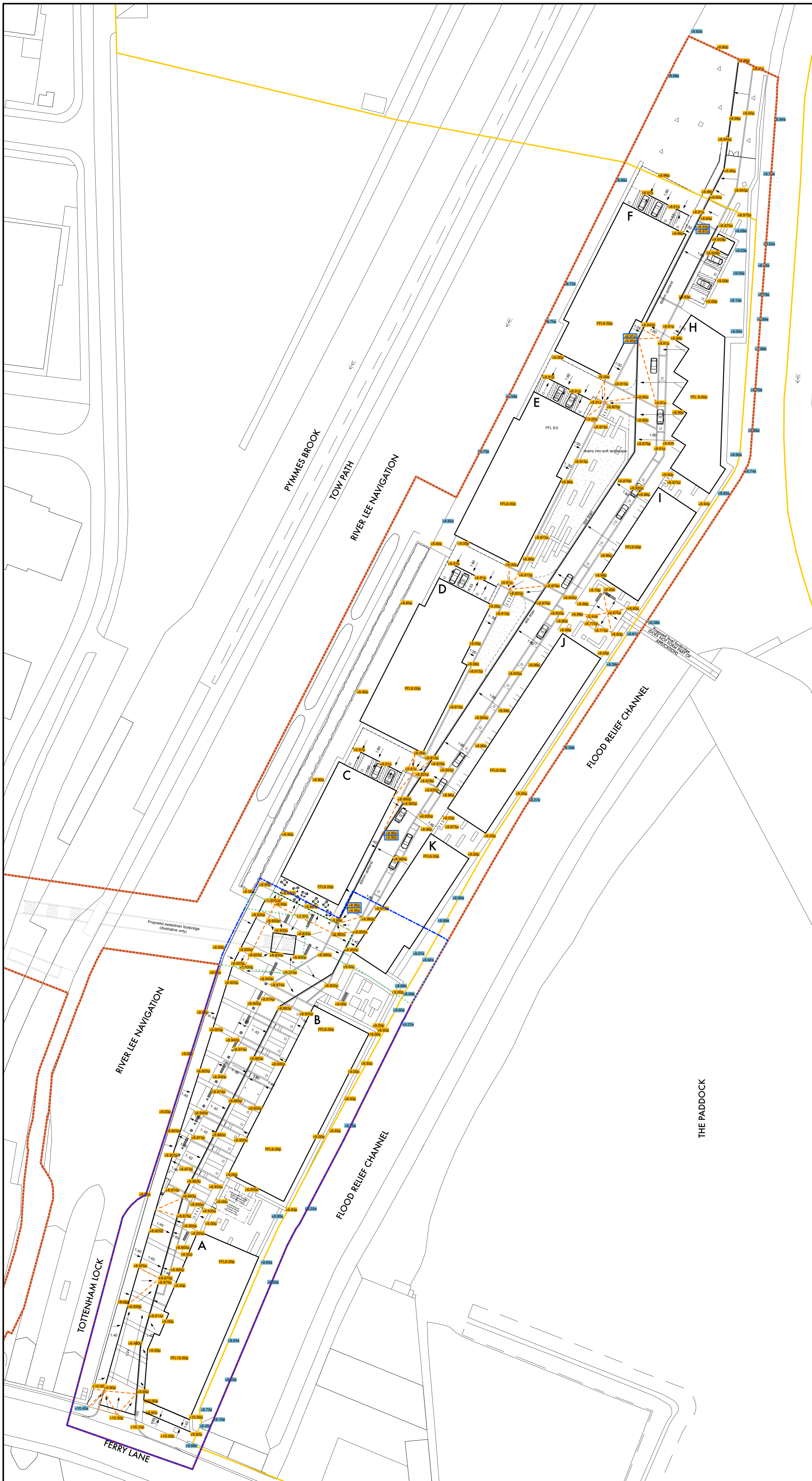
31 Blackfriars Road Salford Manchester M3 7AQ
 PHONE: 0161 839 8336 FAX: 0161 839 7155
 EMAIL: post@landscapeprojects.co.uk

Project Title		Hale Wharf London		Drawing Title		Landscape Proposal Plan Phase One - General arrangement	
Drawn Date	2016-05-23	Drawn	OB	Checked	NCS	Drawing No.	435.012
Scale	1:250 @ A1	Status	Planning	Revision			PL3



Road sub-base preparation for later phases.
(see Mace Hale Wharf Construction
Logistics Considerations Report_April
2016_final 22.4.16.pdf)

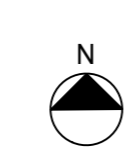
- KEY**
- Application boundary
 - - - Detailed application boundary
 - - - Outline application boundary
 - Green belt boundary
- Hard Landscape**
- Surface Materials**
- S01** Surface type 1: Sureset 6mm, Golden Pearl, Resin bound or similar
 - S02** Surface type 2: Self-binding footpath gravel, gold colour by CEDEC or similar
 - S03** Surface type 3: Granitic concrete setts/small, 80mm depth x 150mm coursed x lengths of 300mm module laid in a stretcher bond (carriageway) 60mm x 150-400mm coursed x 150-400mm lengths laid in random coursing (footpath), as Hardscape 'Kellen, Tagenta B,C,D and E, ratios dependant on location, breccia finish or similar
 - S04** Surface type 4: Granitic concrete setts/small module, laid in a stretcher bond, 80mm depth x 150mm coursed x lengths of 300mm (carriageway) 60mm depth x 150mm coursed x lengths of 300mm (footpath) as Hardscape 'Kellen, Nemaro Argento, breccia finish or similar
 - S05** Surface type 5: Granitic concrete slab laid in random coursing, 60mm depth x 150-400mm coursed x lengths of between 200mm - 600mm as Hardscape 'Kellen, Bianco and Bianco 630, breccia finish or similar
 - S06** Surface type 6: Granitic concrete setts/large module laid in a stretcher bond, 80mm depth x 150-300mm coursed x lengths of between 150 - 300mm as Hardscape 'Kellen, Bianco and Bianco 630, breccia finish' or similar
 - S07** Surface type 7: Reinforced grass surface, Golpla by Geosynthetics or similar
 - S08** Surface type 8: Coloured asphalt, Ulti-colour buff tone gravel Asphalt by Tarmac or similar. (temporary surface until construction complete)
 - S09** Surface type 9: Black asphalt, Ultiphalt HD by Tarmac or similar. (Wearing course/temporary surface until phase construction complete)
- Kerb type 1:** Proposed flush kerb - Pre-cast concrete 255mm x 145mm x 915mm, saxon kerb laid on side as Marshalls or similar
- E01** Edging type 1: Pre-cast concrete, 63mm x 155mm Natural buff conservation edging as Marshalls or similar
- E02** Edging type 2: Steel edging, Everedge classic, slate, by Everedge or similar
- TP1** Tactile Paving 1: Tactile Blister paving, 400x400x65, Textured Natural by Marshalls or similar
- Street furniture and features**
- PS1** Parking signage 1: Bespoke 60x400x400 parking signage
 - PS3** Parking signage 3: Bespoke 60x400x400 parking signage
 - BT1** Bench type 1: Escofet Banco Sócrates 360 Black or similar
 - BT2** Bench type 2: Escofet Banco Sócrates 240 Black or similar
 - BT3** Bench type 3: Escofet Cubo Sócrates 60 Black or similar
 - NP1** Natural Play Equipment 1: Informal features for imaginative natural play to include logs, boulders, trees, changes in level and lawn or similar
 - BO1** Bollard Type 1: Hardwood timber 1000mm 250mm x 250mm top section by woodscape or similar
 - SS1** Sheffield stands 1: Sheffield stands by Falco or similar located in an area of S01 (Sureset 6mm, COLOUR, Resin bonded or similar)
 - TG1** Tree grill type 1: Heavy duty pre-fabricated unit with paving finish. Paved top to match surrounding area, 'Castle' by Green Blue Urban or similar.
 - PA1** Public art feature 1: Proposed bespoke public art feature
 - IH1** Insect Hotels 1: Bespoke insect hotel in durable corten framework, to form habitat for insects and small amphibians.
- Lighting**
- LT1** Lighting type 1: Tapered column with adjustable luminaires, Sulex Candelabra Olivio Medio LED Triple or similar
- Boundary Treatment**
- RT1** Railing type 1: Proposed bespoke 2400mm x 1100mm steel railings, flat and circular galvanised bar construction, painted RAL 7201, with 50mm circular hardwood timber handrail or similar.
- Structures**
- FS1** Floating Structure 1: New location of existing pontoon with potential extensions. Existing Jetty to be extended incorporating new access points
 - FS2** Floating Structure 2: Modular floating rafts, "Floating Riverbanks" by Biomatrix Water or similar.
 - BS1** Bridge Structure 1: Proposed footbridge to WWM Architects specification. (see notes)
- Soft Landscape**
- Groundcover planting**
- EP1** Existing planting 1: Existing planting to the edge of the flood relief channel to be retained where possible.
 - PT1** Planting type 1: Native wildflower and grassland planting - Incorporating nectar rich species - species may include - Ajuga, Symphytum, Anthriscus, Ranunculus, Lysimachia, Festuca, Bellis, Luzula, Glechoma, Filipendula, Carex, Hypericum, Lychnis, Prunella, Stellaria, Galium, Daucus, Fragaria.
 - PT2** Planting type 2: Shrub planting - species may include: Hypericum, Lonicera, Potentilla, Astilbe, Carex, Choisya, Corylus, Euonymus, Festuca, Hebe, Prunus.
- Hedging**
- HT1** Hedge type 1: Guidance hedging - native species to include - Crataegus, Prunus spinosa, Viburnum opulus, Cornus sanguinea, Fagus sylvatica, Acer campestre. Heights ranging from 1100mm to 1800mm.
 - HT2** Hedge type 2: Division Hedging - Fagus sylvatica Heights ranging from 500mm to 1400mm.
- Trees**
- ET1** Existing Tree 1: Existing trees within the Flood Relief Channel.
 - TT1** Tree type 1: Avenue Trees - Platanus acerifolia, 40-45cm girth, height 10m, Mature. All TT1 trees to use TG1 tree pit.
 - TT4** Tree type 4: Grouped tree planting - species mix to include - Alnus glutinosa, 20-25cm girth, height 6m, Semi-mature, Carpinus Betulus, 20-25cm girth, height 6m, Semi-mature and Pyrus communis, 20-25cm girth, height 5m, Semi-mature. Selected trees to be clear stem up to a height of 2400mm.
- NOTES:**
- Soft landscaped areas to be formed of at least 600mm of clean imported cover separated from the Made Ground with a teram (or similar) membrane demarcation layer.
 - An explanation and description of the landscape features are provided within the accompanying Design and Access Statement. Any changes to the specification should be discussed and accepted by Landscape Projects.
 - Final selection of materials, tree and plant species and street furniture elements subject to detailed testing and assessment and procurement conditions
 - Proposed pedestrian footbridge shown for illustrative purposes only (subject to future approval)
 - Outline approval is sought for a bridge and bridge landing in this location - see parameter plan THGL234; Detailed Approval is sought for Phase 1 landscape works
 - Landscape adjustments may be required in response to the detailed design of the pedestrian footbridge.
 - Where outline and detailed boundaries overlap, approval is being sought for both consent and detailed consent in those areas to accommodate for example, but not limited to, facilitating works.
 - Underground pumping station shown in illustrative form only, Engineer to advise, see drawing no. 33510-RAM-XX-00-DR-Z-111



- KEY**
- Application boundary
 - - - Detailed application boundary
 - - - Outline application boundary
 - Green belt boundary
 - +9.56e Existing level
 - +9.78p Proposed level
 - Proposed slot drain, item to be confirmed
 - Proposed point drain, item to be confirmed
 - - - Paving cut lines
 - 1:40 Gradient
 - Direction of fall

- NOTES:**
- Areas and levels shown outside of the detailed application boundary are illustrative.
 - Proposed pedestrian footbridge shown for illustrative purposes only (subject to future approval)
 - Outline approval is sought for a bridge and bridge landing in this location - see parameter plan THGL/234; Detailed Approval is sought for Phase 1 landscape works - see phase one plan 435.012.
 - Landscape adjustments may be required in response to the detailed design of the pedestrian footbridge.
 - Where outline and detailed boundaries overlap, approval is being sought for both consent and detailed consent in those areas to accommodate for example, but not limited to, facilitating works.
 - Underground pumping station shown in illustrative form only, Engineer to advise, see drawing no. 33510-RAM-XX-00-DR-Z-111
 - Landscaping shown within the outline application boundary is for illustrative purposes only.

© All information contained within this document remains copyright of Landscape Projects Ltd. and shall not be reproduced without prior consent.
 (1) Do not scale from drawings - use written dimensions only. (2) All dimensions are in millimeters unless noted. (3) All dimensions shall be verified on site before proceeding with the work. (4) Landscape Projects shall be notified of any discrepancies. (5) Engineer to specify all sub-bases. Any below ground construction is indicative.

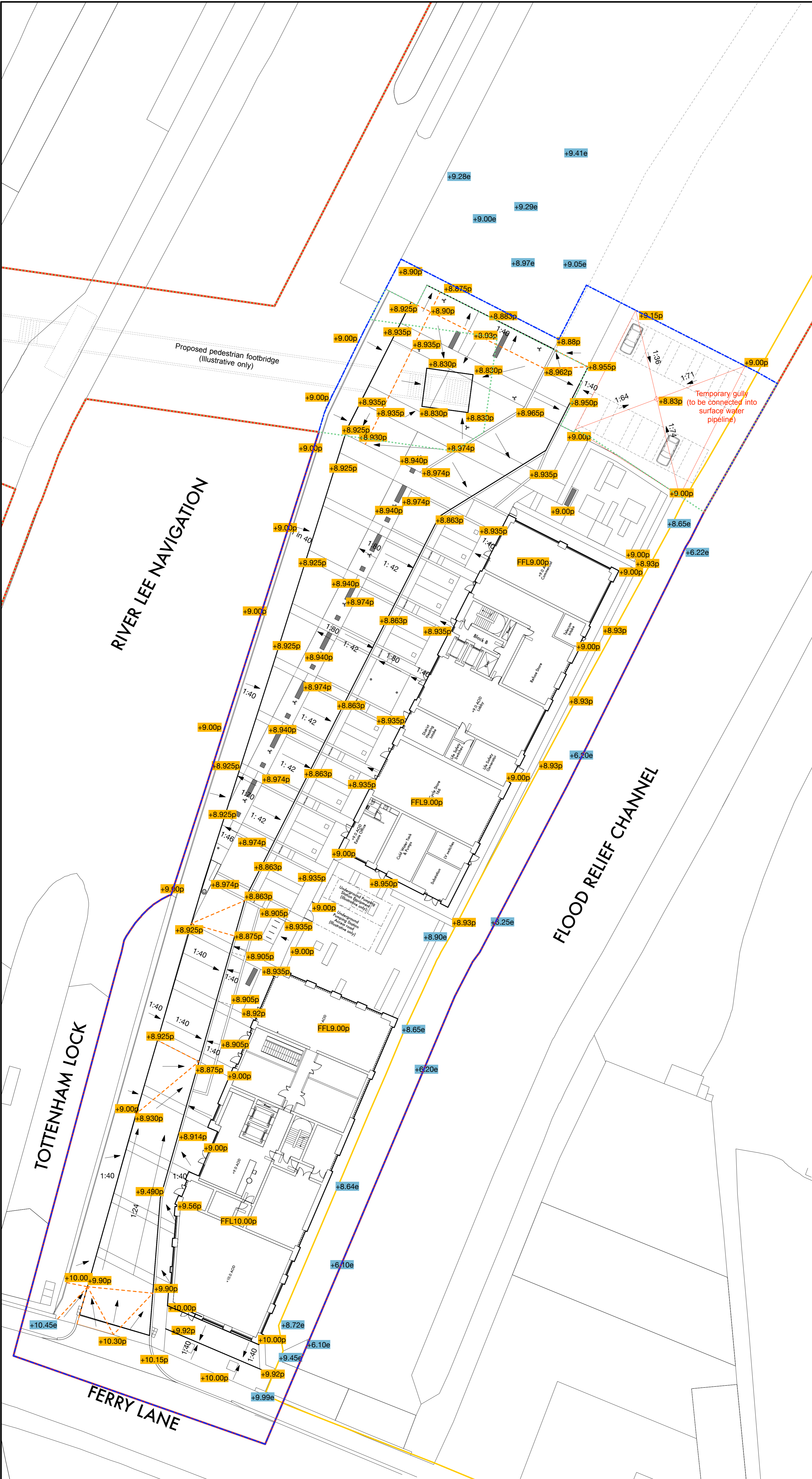


OB	PL3	2017-01-23	Planning re-submission
RL	PL2	2017-01-20	Car park edit
OB	PL1	2016-05-23	Planning

landscapeprojects

Landscape Architecture & Design
 31 Blackfriars Road Salford Manchester M3 7AQ
 PHONE: 0161 839 8336 FAX: 0161 839 7155
 EMAIL: post@landscapeprojects.co.uk

Project Title Hale Wharf London		Drawing Title Landscape Masterplan Site wide levels	
Drawn Date 2016-05-23	Drawn OB	Checked NCS	Revision PL3
Scale 1:500 @ A1	Status Planning	Drawing No. 435.020	



KEY

- Application boundary
- - - Detailed application boundary
- - - Outline application boundary
- Green belt boundary
- +9.56e Existing level
- +9.78p Proposed level
- Proposed slot drain, item to be confirmed
- Proposed point drain, item to be confirmed
- - - Paving cut lines
- 1:40 Gradient
- Direction of fall

NOTES:

- Areas and levels shown outside of the detailed application boundary are illustrative.
- Proposed pedestrian footbridge shown for illustrative purposes only (subject to future approval)
- Outline approval is sought for a bridge and bridge landing in this location - see parameter plan THGL/234; Detailed Approval is sought for Phase 1 landscape works - see phase one plan 435.012.
- Landscape adjustments may be required in response to the detailed design of the pedestrian footbridge.
- Where outline and detailed boundaries overlap, approval is being sought for both consent and detailed consent in those areas to accommodate for example, but not limited to, facilitating works.
- Underground pumping station shown in illustrative form only, Engineer to advise, see drawing no. 33510-RAM-XX-00-DR-Z-111
- Landscaping shown within the outline application boundary is for illustrative purposes only.

© All information contained within this document remains copyright of Landscape Projects Ltd. and shall not be reproduced without prior consent.
 (1) Do not scale from drawings - use written dimensions only. (2) All dimensions are in millimeters unless noted. (3) All dimensions shall be verified on site before proceeding with the work. (4) Landscape Projects shall be notified of any discrepancies. (5) Engineer to specify all sub-projects. Any below ground construction is indicative.

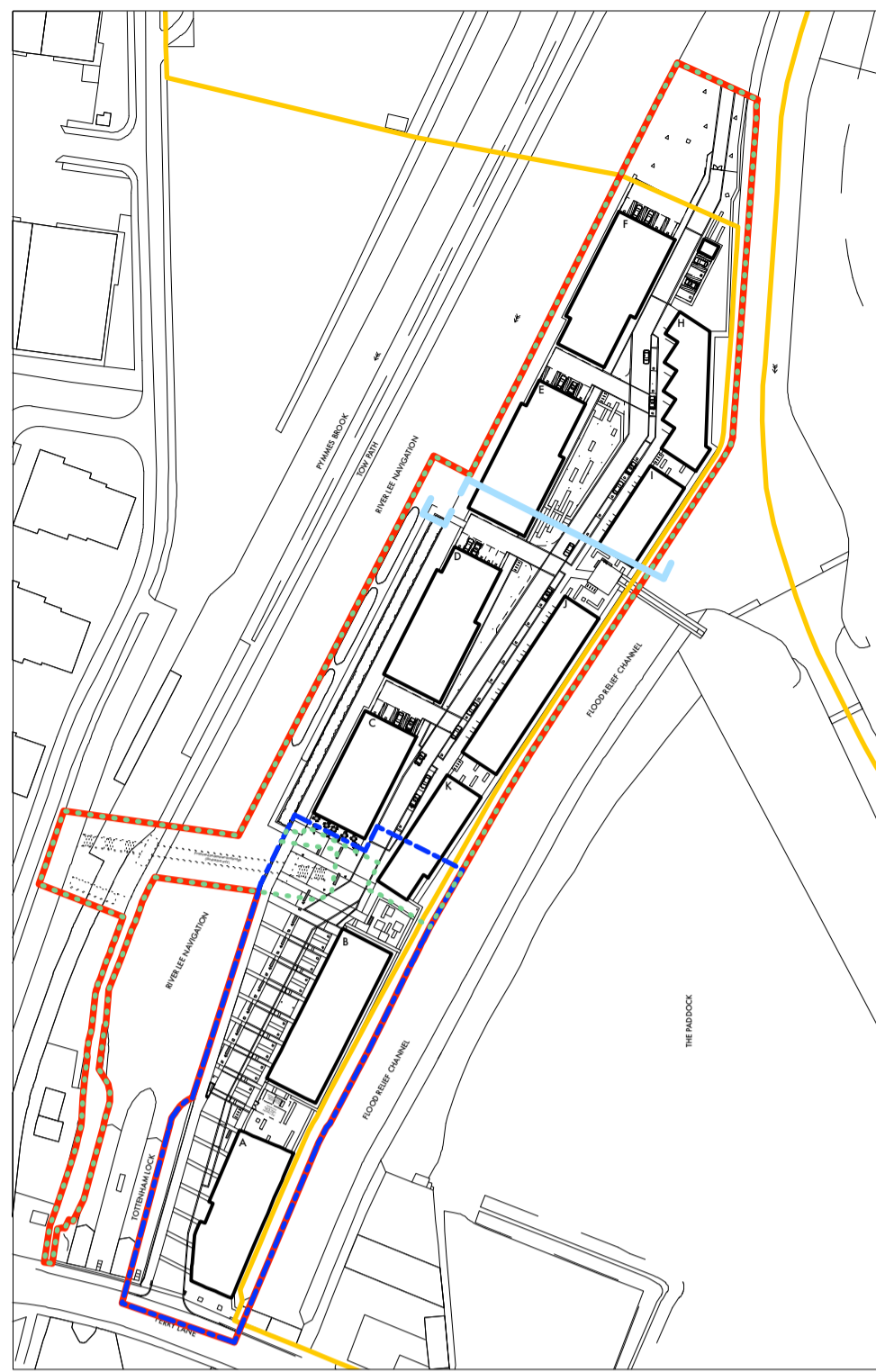


OB	PL3	2017-01-23	Planning re-submission
RL	PL2	2017-01-20	Car park edit
OB	PL1	2016-05-23	Planning

landscapeprojects

Landscape Architecture & Design
 31 Blackfriars Road Salford Manchester M3 7AQ
 PHONE: 0161 839 8336 FAX: 0161 839 7155
 EMAIL: post@landscapeprojects.co.uk

Project Title Hale Wharf London		Drawing Title Landscape Proposal Plan Phase One - Levels	
Drawn Date 2016-05-23	Drawn OB	Checked NCS	Drawing No. 435.021
Scale 1:250 @ A1	Status Planning	Revision PL3	



i. SECTION KEY PLAN (1:2000 @ A1)

- KEY**
- Application boundary
 - Detailed application boundary
 - Outline application boundary
 - Green belt boundary
 - Section line

Indicative Courtyard Landscape

KEY

Hard Landscape

1. **Footway:** Granite concrete setts/small, 60mm x 150-400mm coursing x 150-400mm lengths laid in random coursing footpath, as Hardscape 'Kellen, Tagenta B,C,D and E, ratios dependant on location, breccia finish or similar
2. **Carraigeway and Car Parking:** Granite concrete setts/small, 80mm depth x 150mm coursed x lengths of 300mm module laid in a stretcher bond carriageway, as Hardscape 'Kellen, Tagenta B,C,D and E, ratios dependant on location, breccia finish or similar
3. **Navigation Wildflower Edge:** Reinforced grass surface, Golpla by Geosynthetics or similar
4. **Edging to privacy zones:** Pre-cast concrete, 63mm x 155mm Natural buff conservation edging as Marshalls or similar
5. **Edging to soft landscape areas:** Proposed flush kerb - Pre-cast concrete 255mm x 145mm x 915mm, saxon kerb laid on side as Marshalls or similar
6. **Slot Drain:** Proposed slot drain, ACO MultiDrain M100D No. 0.0 with Galvanised Steel Brickslot Grating or similar, Engineer to advise.

Soft Landscape

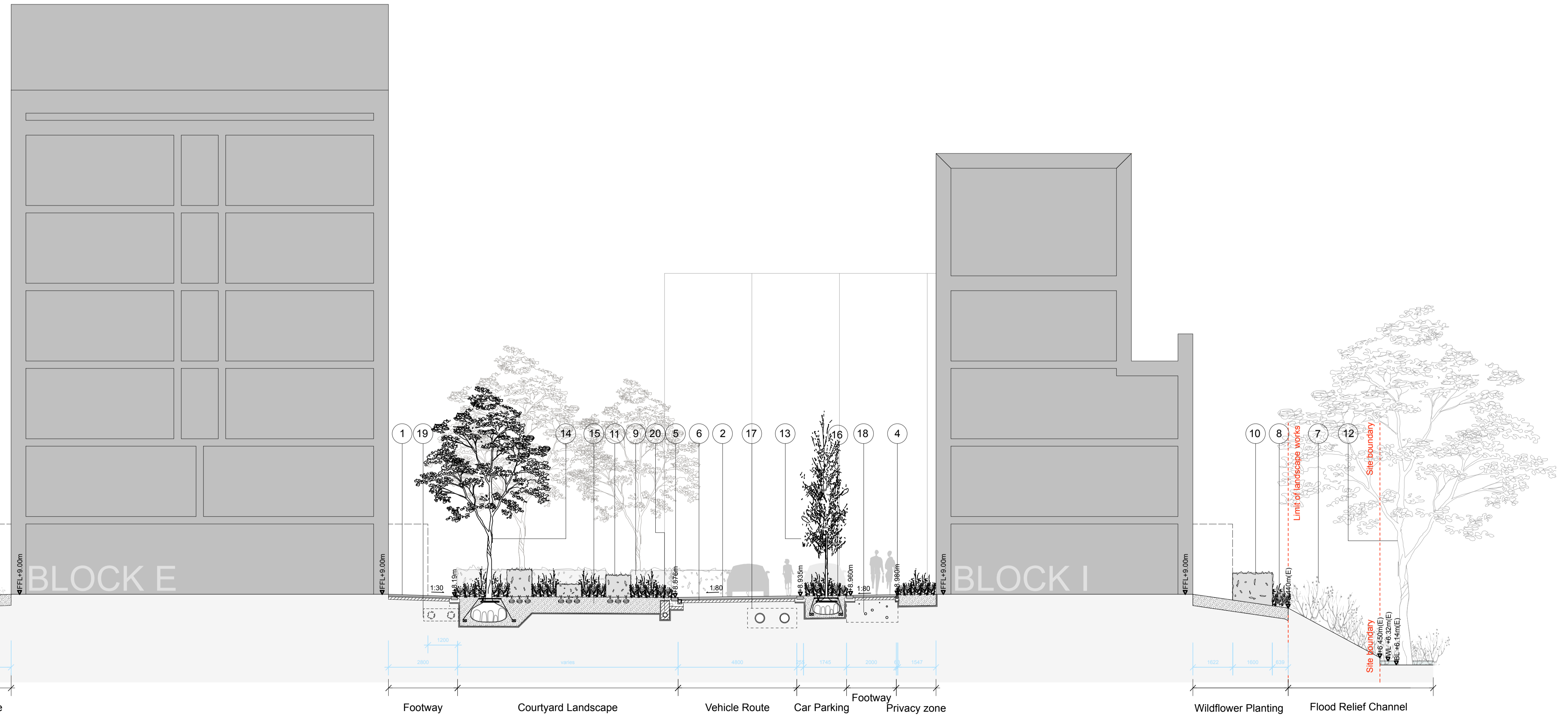
7. **Flood Relief Channel Planting :** Existing planting to the edge of the flood relief channel to be retained, where possible
8. **Navigation Wildflower Planting:** Native species may include - incorporating nectar rich species - Ajuga, Symphytum, Anthriscus, Ranunculus, Lysimachia, Festuca, Bellis, Luzula, Glechoma, Filipendula, Carex, Hypericum, Lychnis, Prunella, Stellaria, Galium, Daucus, Fragaria.
9. **Courtyard Planting:** Species mix to include: Hypericum, Lonicera, Potentilla, Astilbe, Carex, Choisya, Corylus, Euonymus, Festuca, Hebe, Prunus.
10. **Boundary Hedge:** Native Species to include - Crataegus, Prunus spinosa, Viburnum opulus, Cornus sanguinea, Fagus sylvatica, Acer campestre. Heights ranging from 1100mm to 1800mm.
11. **Ornamental Hedge:** Fagus sylvatica, heights ranging from 500mm to 1400mm.
12. **Flood Relief Channel Trees:** Existing trees within the flood relief channel to be retained, where possible.
13. **Fastigate Trees:** Quercus robur 'koster' fastigiata, 20-25cm girth, height 5m, Semi-mature
14. **Grouped Trees:** Species may include - Alnus glutinosa, 20-25cm girth, height 6m, Semi-mature, Carpinus Betulus, 20-25cm girth, height 6m, Semi-mature and Pyrus communis, 20-25cm girth, height 5m, Semi-mature. Selected trees to be clear stem up to a height of 2400mm.
15. **Courtyard Landscape area:** Large lined tree pit area for grouped trees (No 14.) minimum depth of 1000mm, Engineer to advise.
16. **Car Parking Tree Trench:** Large lined tree pit area for grouped trees (No 13.) minimum depth of 1000mm x 2000 width, Engineer to advise.

Other

17. **Foul and surface water pipes:** Proposed location for foul and surface water transportation pipes, Engineer to advise.
18. **Services:** Proposed location for services, Engineer to advise.
19. **District heating pipes:** Proposed location for district heating services, if required, Engineer to advise.
20. **Filter trench (French drain):** Proposed location for filtration french drain, Engineer to advise.

NOTES:

- Area closest to building dashed shows potential area for balconies and terraces to architects specification.
- Soft landscaped areas to be formed of at least 600mm of clean imported cover separated from the Made Ground with a teram (or similar) membrane demarcation layer.
- An explanation and description of the landscape features are provided within the accompanying Design and Access Statement
- Any changes to the specification should be discussed and accepted by Landscape Projects.
- Final selection of materials, tree and plant species and street furniture elements subject to detailed testing and assessment and procurement conditions
- This drawing is an illustrative section showing arrangement, types of products and indicative measurements, for planning purposes only.



ii. COURTYARD SECTION (1:100 @ A1)

© All information contained within this document remains copyright of Landscape Projects Ltd. and shall not be reproduced without prior consent.

(1) Do not scale from drawings - use written dimensions only. (2) All dimensions are in millimeters unless noted. (3) All dimensions shall be verified on site before proceeding with the work. (4) Landscape Projects shall be notified of any discrepancies. (5) Engineer to specify all sub-bases. Any below ground construction is indicative.

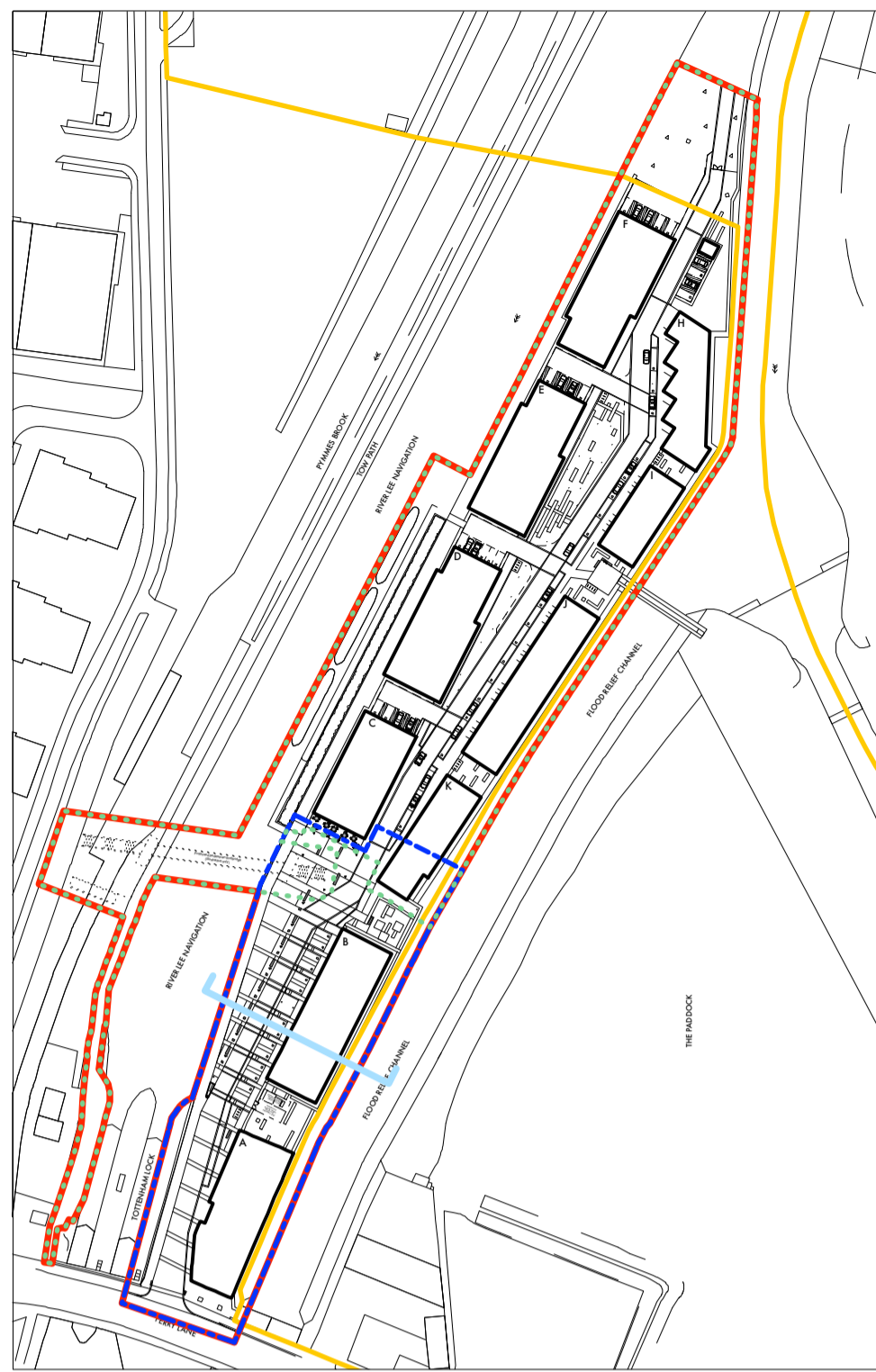
OB	PL3	2017-01-23	Planning re-submission
RL	PL2	2017-01-20	Car park edit
OB	PL1	2016-05-23	Planning

landscape projects

Landscape Architecture & Design

31 Blackfriars Road Salford Manchester M3 7AN
PHONE: 0161 839 8336 FAX: 0161 839 7155
EMAIL: postal@landscapeprojects.co.uk

Project Title		Drawing Title	
Hale Wharf Tottenham London		Landscape Proposals Courtyard indicative section	
Drawn Date	Drawn	Checked	
2016-05-23	OB	NCS	
Scale	Status	Drawing No.	Revision
1:100 @ A1 (or stated)	Planning	460.100	PL3



Wharfside Landscape

KEY

Hard Landscape

1. **Promenade:** Granitic concrete slab laid in random coursing. 60mm depth x 150-400mm coursed x lengths of between 200mm - 600mm as Hardscape 'Kellen, Bianco and Bianco 630, breccia finish' or similar
2. **Parking Band:** Granitic concrete setts/large module laid in a stretcher bond. 80mm depth x 150-300mm coursed x lengths of between 150 - 300mm as Hardscape 'Kellen, Bianco and Bianco 630, breccia finish' or similar
3. **Footway and Carraigeaway:** Granitic concrete setts/small, 80mm depth x 150mm coursed x lengths of 300mm module laid in a stretcher bond (carriageway) 60mm x 150-400mm coursed x 150-400mm lengths laid in random coursing (footpath), as Hardscape 'Kellen, Tagenta B,C,D and E, ratios dependat on location, breccia finish or similar
4. **Access Route:** Reinforced grass surface, Golpla by Geosynthetics or similar
5. **Wharfside Public Realm:** Sureset 6mm, Golden Pearl, Resin bound or similar
6. **Channel:** Proposed flush kerb - Pre-cast concrete 255mm x 145mm x 915mm, saxon kerb laid on side as Marshalls or similar
7. **Edge type:** Wharfside edge coping, pre-cast concrete. Engineer to advise on fixings.
8. **Promenade Railing:** Proposed bespoke 2400mm x 1100mm steel railings, flat and circular galvanised bar construction, painted RAL 7201, with hardwood timber handrail or similar.
9. **Lighting:** Tapered column with adjustable luminaires, Sulex Candelabra Olivio Medio LED Triple or similar
10. **Bench:** Escofet banco Sócrates 240 Black or similar
11. **Slot drain:** Proposed slot drain, ACO MultiDrain M100D No. 0.0 with Galvanised Steel Brickslot Grating or similar. Engineer to advise.

Soft Landscape

12. **Avenue Trees:** Platanus acerifolia, 40-45cm girth, height 10m, Mature.
13. **Tree trench:** Proposed location of tree trench, for avenue trees (No. 8), minimum of 1000mm depth x 2500mm width, Engineer to advise.
14. **Guidance Hedging:** Native species to include - Crataegus, Prunus spinosa, Viburnum opulus, Cornus sanguinea, Fagus sylvatica, Acer campestre. Heights ranging from 1100mm to 1800mm.
15. **Flood Relief Channel Planting:** Existing planting to the edge of the flood relief channel to be retained, where possible.
16. **Flood Relief Channel Trees:** Existing large trees within the flood relief channel to be retained, where possible.

Other

17. **Threshold Drain:** Slot drain to threshold, Architect and Engineer to advise.
18. **Attenuation Tanks:** Proposed location for Large attenuation tanks, product to be confirmed, Engineer to advise.
19. **Foul and surface water pipes:** Proposed location for foul and surface water transportation pipes, Engineer to advise.
20. **Services:** Proposed location for services, Engineer to advise.
21. **District heating pipes:** Proposed location for district heating services, Engineer to advise

NOTES:

- Engineer to advise on all sub-bases.
- Soft landscaped areas to be formed of at least 600mm of clean imported cover separated from the Made Ground with a teram (or similar) membrane demarcation layer.
- An explanation and description of the landscape features are provided within the accompanying Design and Access Statement
- Any changes to the specification should be discussed and accepted by Landscape Projects.
- Final selection of materials, tree and plant species and street furniture elements subject to detailed testing and assessment and procurement conditions
- Proposed pedestrian footbridge shown for illustrative purposes only (subject to future approval)
- Outline approval is sought for a bridge and bridge landing in this location - see parameter plan THGL/234; Detailed Approval is sought for Phase 1 landscape works - see phase one plan 435.012.
- Landscape adjustments may be required in response to the detailed design of the pedestrian footbridge.
- This drawing is for planning purposes only.

i. SECTION KEY PLAN (1:2000 @ A1)

- KEY**
- Application boundary
 - Detailed application boundary
 - Outline application boundary
 - Green belt boundary
 - Section line



ii. WHARFSIDE SECTION (1:100 @ A1)

© All information contained within this document remains copyright of Landscape Projects Ltd. and shall not be reproduced without prior consent.

(1) Do not scale from drawings - use written dimensions only. (2) All dimensions are in millimeters unless noted. (3) All dimensions shall be verified on site before proceeding with the work. (4) Landscape Projects shall be notified of any discrepancies. (5) Engineer to specify all sub-bases. Any below ground construction is indicative.

		Project Title Hale Wharf Tottenham London		Drawing Title Landscape Proposals Wharfside detailed section	
Drawn Date 2016-05-23	Drawn OB	Checked NCS			
Scale 1:100 @ A1 (or stated)	Status Planning	Drawing No. 460.101	Revision PL3		
Landscape Architecture & Design 31 Blackfriars Road Salford Manchester M3 7AN PHONE: 0161 839 8336 FAX: 0161 839 7155 EMAIL: postalandscapeprojects.co.uk					
OB PL3 2017-01-23 Planning re-submission RL PL2 2017-01-20 Car park edit OB PL1 2016-05-23 Planning					