

ILFORD DISTRICT HEAT NETWORK

Location

Iford, Redbridge

Client Type

Local Authority

Key Collaborators

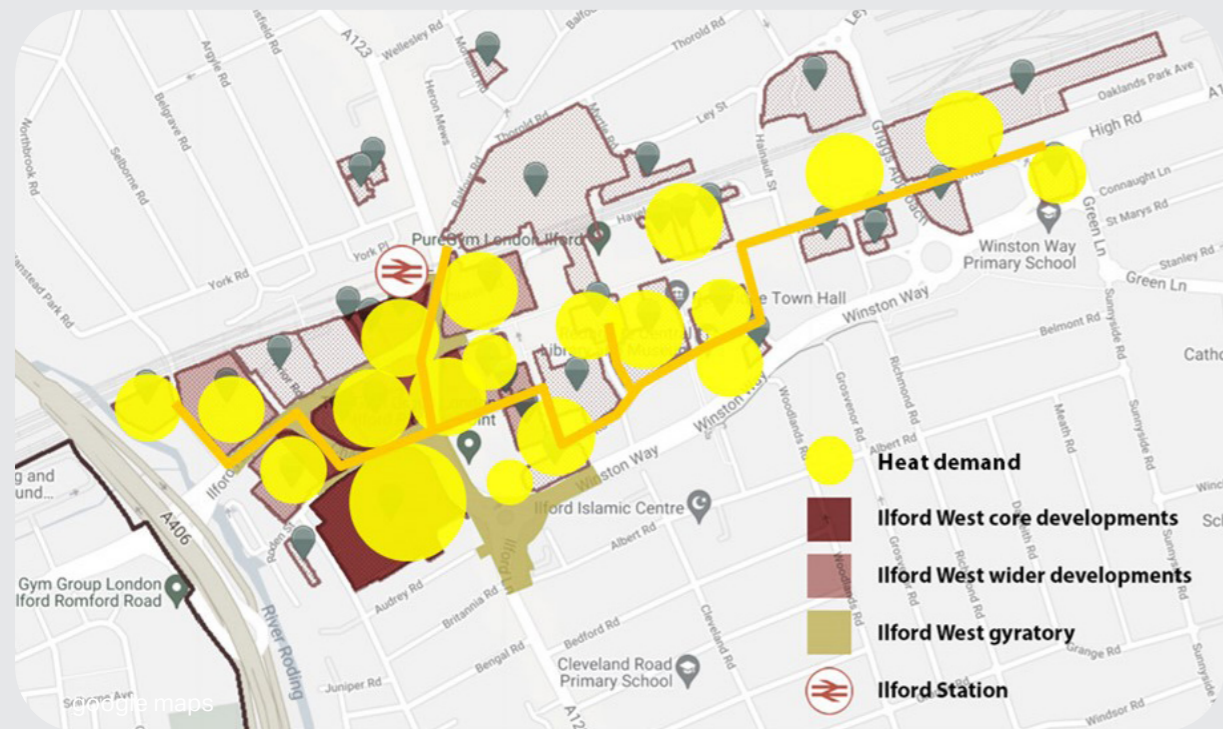
Iford Western Gateway (Redbridge Regeneration Team); BEIS; Greenfield Nordic; Telford Homes; GLA; Energy services companies; Redbridge Development Management Energy Officer; Thames Water

Summary

A fully-funded technoeconomic feasibility study into the viability/scope of a more sustainable heating network to serve Iford and possibly the Crossrail Corridor.

The Challenge

Decarbonising heating is essential to meet net-zero targets. District heat networks are one of the key focal points to help us meet targets and replace the use of fossil fuels. Following a 2016 feasibility study that didn't generate further action, the Infrastructure Coordinator secured buy-in from several stakeholders to gain approval to carry out further investigation. The ambition is to drive forward the work required to make positive strategic change to decarbonise developments.



ILFORD DISTRICT HEAT NETWORK

Our Approach

The Infrastructure Coordinator took advantage of being embedded in the borough as well as part of the team at the GLA to assess market interest in a district heat network in Iford. They convened conversations between Energy services companies and Redbridge's Iford Western Gateway team.

Key Outcomes

This work was presented to management and senior management and internally to staff at LBR as CPD/awareness-raising.

The Coordinator convened collaborators to discuss decarbonisation ambitions, new technologies and the possibilities for a system that is commercially viable, sustainable and resilient, ensuring no opportunities are missed.



Sustainable Approach



Stakeholder Collaboration



Local Collaboration



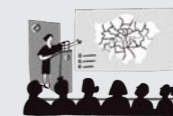
Data Resources



Improving Viability



Future Proofing



Strategic Approach