

OCTOBER  
2017

**Natural capital**  
accounts for public  
**green space**  
in London

Local authority summaries

# Contents

<b>Barking and Dagenham</b>	page 2
<b>Barnet</b>	page 4
<b>Bexley</b>	page 6
<b>Brent</b>	page 8
<b>Bromley</b>	page 10
<b>Camden</b>	page 12
<b>City of London</b>	page 14
<b>Croydon</b>	page 16
<b>Ealing</b>	page 18
<b>Enfield</b>	page 20
<b>Greenwich</b>	page 22
<b>Hackney</b>	page 24
<b>Hammersmith and Fulham</b>	page 26
<b>Haringey</b>	page 28
<b>Harrow</b>	page 30
<b>Havering</b>	page 32
<b>Hillingdon</b>	page 34
<b>Hounslow</b>	page 36
<b>Islington</b>	page 38
<b>Kensington and Chelsea</b>	page 40
<b>Kingston upon Thames</b>	page 42
<b>Lambeth</b>	page 44
<b>Lewisham</b>	page 46
<b>Merton</b>	page 48
<b>Newham</b>	page 50
<b>Redbridge</b>	page 52
<b>Richmond upon Thames</b>	page 54
<b>Southwark</b>	page 56
<b>Sutton</b>	page 58
<b>Tower Hamlets</b>	page 60
<b>Waltham Forest</b>	page 62
<b>Wandsworth</b>	page 64
<b>Westminster</b>	page 66

# **Borough summary document**

In the following pages, the economic value of parks is calculated separately for the 32 London boroughs and the City of London. The numbers shown in this section are analogous to the accounts for London as a whole, but have been broken down to provide information for decision makers and interested parties at these local administrative levels.

Unless otherwise stated, these accounts show estimates for the value of parks evaluated over a 30 year period.

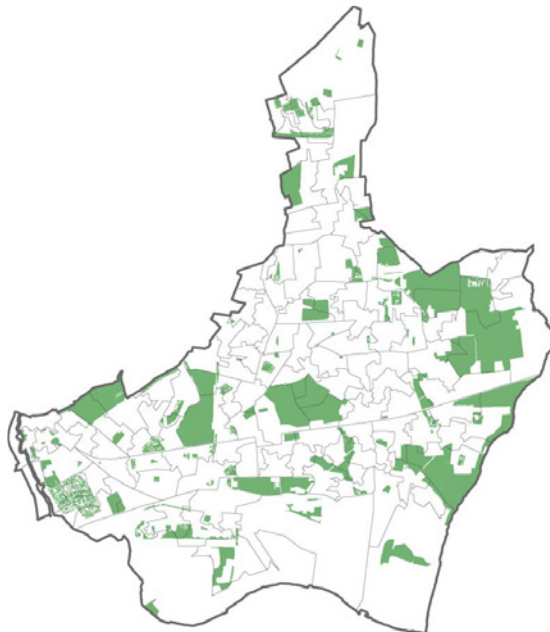
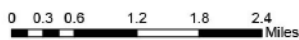
# Barking and Dagenham

## Type and quantity of public parks

**Borough area:** 3,780 hectares

**Publicly accessible parks:** 680 hectares

Barking and Dagenham is ranked as the 19th greenest out of the 33 London boroughs in terms of proportion of area under publicly accessible greenspace.



**FIGURE 1**

Publicly accessible greenspace in Barking and Dagenham

## Total value

**Total value:** £1.1 billion

**Benefit-cost ratio:** 9

**Annual person value:** £287

**TABLE 1**

Value of public parks in Barking and Dagenham

ASSETS	PUBLIC SERVICES	HOUSEHOLD	BUSINESS	VALUE	%
Recreation		205		205	17
Mental health	34	88	50	172	14
Physical health	49	126	72	247	21
Property		555		555	46
Carbon				4	< 1
Temperature		14		14	1
Value	84	988	121	1,196	100
	7%	83%	10%		

Note: All values are expressed in million £s

## Property

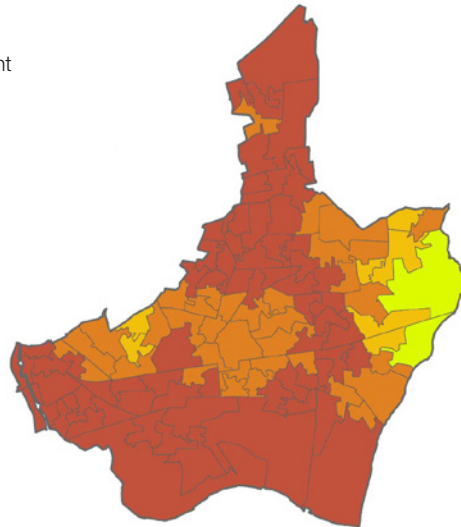
Total value: £555 million

Value as proportion of property value: 3 per cent

Per household value: £7,961

Annual per person value: £207

0 0.3 0.6 1.2 1.8 2.4 Miles



**FIGURE 2**

Average amenity value revealed through property price per household in Barking and Dagenham (£)

## Health

### Mental health savings

Total value: £172 million

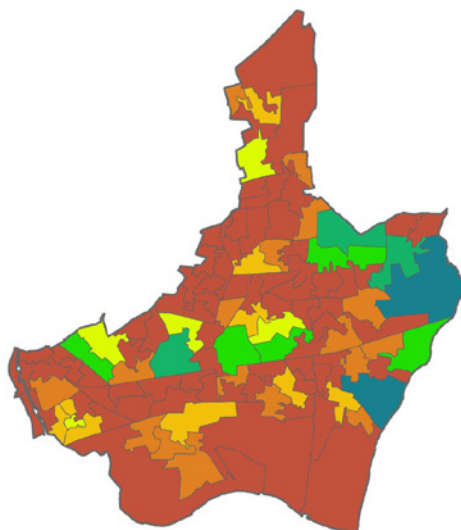
Annual person savings: £46

### Physical health savings

Total value: £247 million

Annual person savings: £67

0 0.3 0.6 1.2 1.8 2.4 Miles



**FIGURE 3**

Mental health expenditure savings per person Barking and Dagenham (£)

## Other benefits

### Recreational benefits

Total value: £633 million

### Carbon storage

Total value: £3.64 million

### Temperature regulation

Total value: £14 million

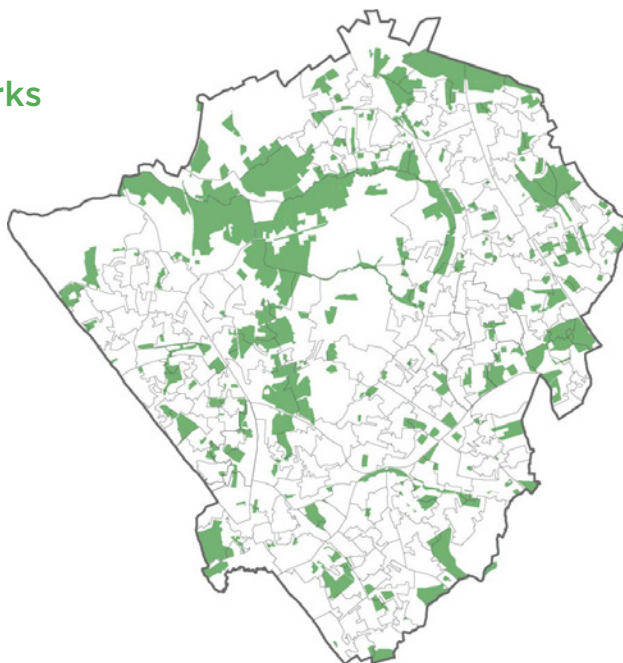
# Barnet

## Type and quantity of public parks

**Borough area:** 8,675 hectares

**Publicly accessible parks:** 1,749 hectares

Barnet is ranked as the 11th greenest out of the 33 London boroughs in terms of proportion of area under publicly accessible greenspace.



**FIGURE 1**

Publicly accessible greenspace in Barking and Dagenham

## Total value

**Total value:** £3.8 billion

**Benefit-cost ratio:** 35

**Annual person value:** £543

**TABLE 1**

Value of public parks in Barnet

ASSETS	PUBLIC SERVICES	HOUSEHOLD	BUSINESS	VALUE	%
Recreation		832		832	21
Mental health	60	153	87	300	8
Physical health	77	196	112	385	10
Property		2,357		2,357	60
Carbon				6	< 1
Temperature		26		26	1
Value	137	3,565	199	3,907	100
	4%	91%	5%		

Note: All values are expressed in million £s

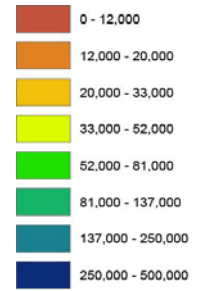
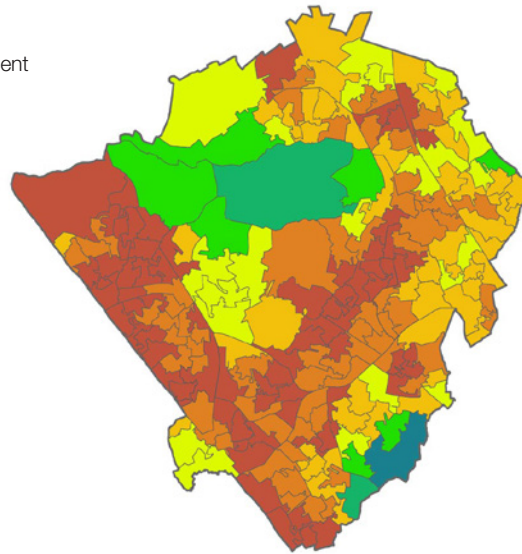
## Property

Total value: £2.36 billion

Value as proportion of property value: 3 per cent

Per household value: £17,343

Annual per person value: £388



**FIGURE 2**

Average amenity value revealed through property price per household in Barnet (£)

## Health

### Mental health savings

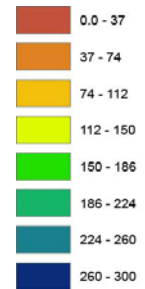
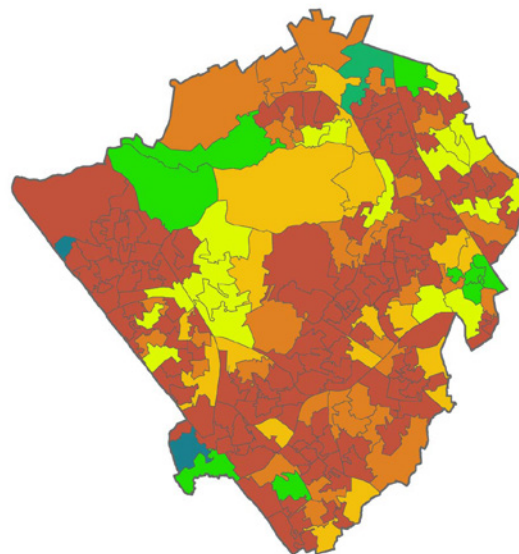
Total value: £300 million

Annual person savings: £43

### Physical health savings

Total value: £385 million

Annual person savings: £55



**FIGURE 3**

Mental health expenditure savings per person in Barnet (£)

## Other benefits

### Recreational benefits

Total value: £832 million

### Carbon storage

Total value: £6.47 million

### Temperature regulation

Total value: £26 million

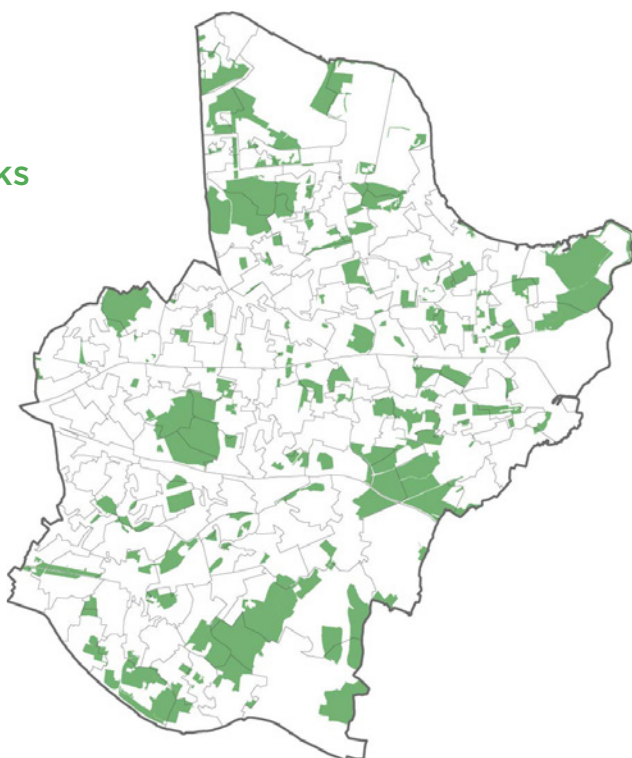
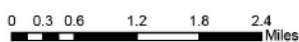
# Bexley

## Type and quantity of public parks

**Borough area:** 6,429 hectares

**Publicly accessible parks:** 1,189 hectares

Bexley is ranked as the 17th greenest out of the 33 London boroughs in terms of proportion of area under publicly accessible greenspace.



**FIGURE 1**

Publicly accessible greenspace in Bexley

## Total value

**Total value:** £1.8 billion

**Benefit-cost ratio:** 29

**Annual person value:** £399

**TABLE 1**

Value of public parks in Bexley

ASSETS	PUBLIC SERVICES	HOUSEHOLD	BUSINESS	VALUE	%
Recreation		397		397	22
Mental health	42	107	61	209	11
Physical health	62	159	90	311	17
Property		899		899	49
Carbon				10	1
Temperature		17		17	1
Value	104	1,578	151	1,843	100
	6%	86%	8%		

Note: All values are expressed in million £s



## Property

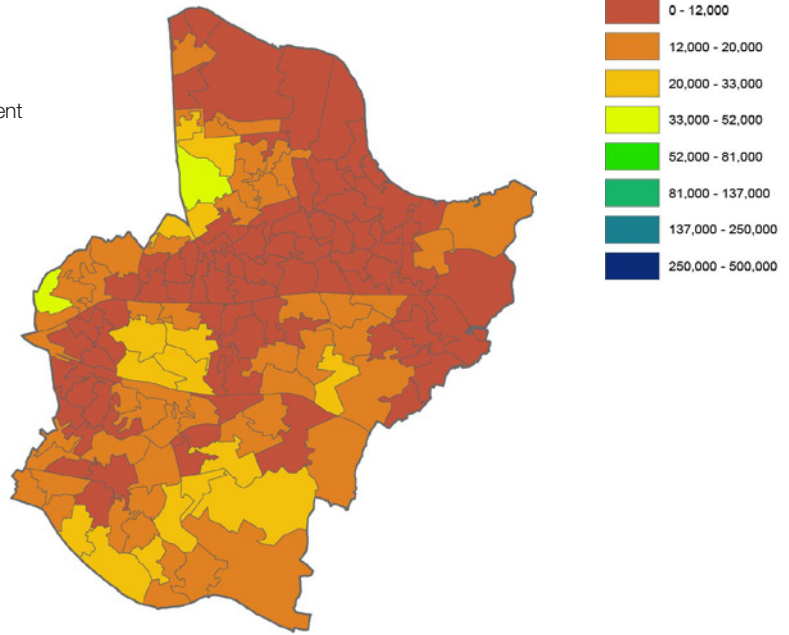
Total value: £899 million

Value as proportion of property value: 3 per cent

Per household value: £9,708

Annual per person value: £261

0 0.3 0.6 1.2 1.8 2.4 Miles



**FIGURE 2**

Average amenity value revealed through property price per household in Bexley (£)

## Health

### Mental health savings

Total value: £209 million

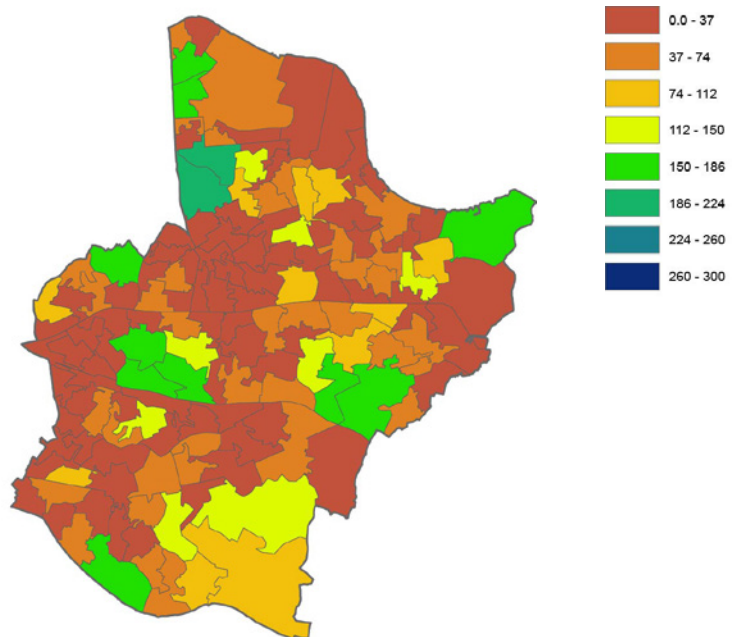
Annual person savings: £47

### Physical health savings

Total value: £311 million

Annual person savings: £70

0 0.3 0.6 1.2 1.8 2.4 Miles



**FIGURE 3**

Mental health expenditure savings per person in Bexley (£)

## Other benefits

### Recreational benefits

Total value: £397 million

### Carbon storage

Total value: £9.6 million

### Temperature regulation

Total value: £17 million

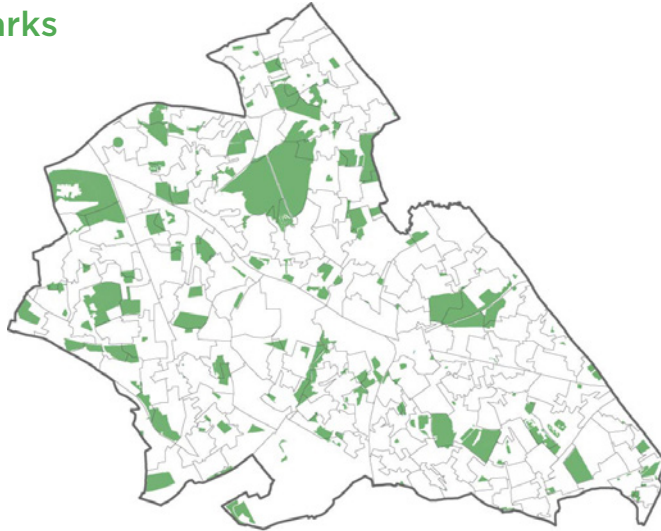
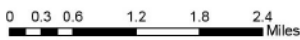
# Brent

## Type and quantity of public parks

**Borough area:** 4,323 hectares

**Publicly accessible parks:** 622 hectares

Brent is ranked as the 25th greenest out of the 33 London boroughs in terms of proportion of area under publicly accessible greenspace.



**FIGURE 1**  
Publicly accessible greenspace in Brent

## Total value

**Total value:** £2.4 billion

**Benefit-cost ratio:** 34

**Annual person value:** £399

**TABLE 1**  
Value of public parks in Brent

ASSETS	PUBLIC SERVICES	HOUSEHOLD	BUSINESS	VALUE	%
Recreation		419		419	17
Mental health	42	108	61	211	9
Physical health	79	201	114	394	16
Property		1,402		1,402	57
Carbon				2	<1
Temperature		22		22	1
Value	121	2,152	175	2,451	100
	5%	88%	7%		

Note: All values are expressed in million £s

## Property

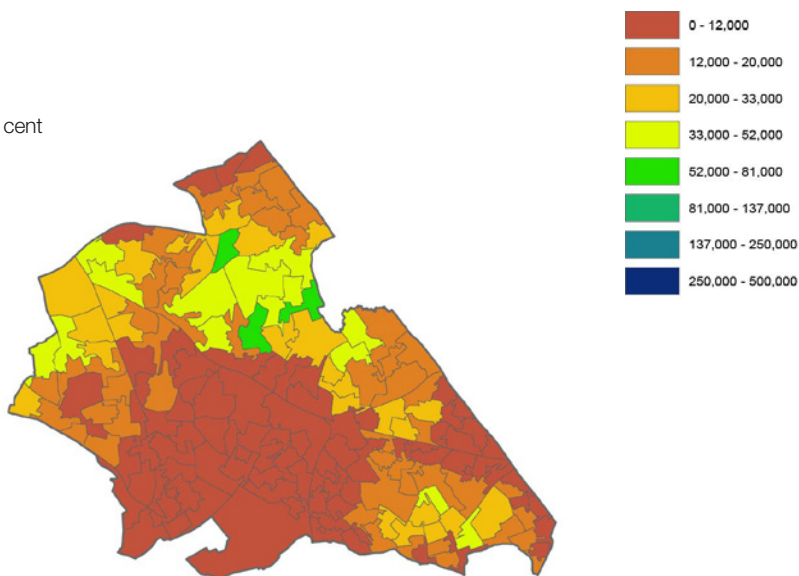
Total value: £1.4 billion

Value as proportion of property value: 3 per cent

Per household value: £12,714

Annual per person value: £287

0 0.3 0.6 1.2 1.8 2.4 Miles



**FIGURE 2**

Average amenity value revealed through property price per household in Brent (£)

## Health

### Mental health savings

Total value: £211 million

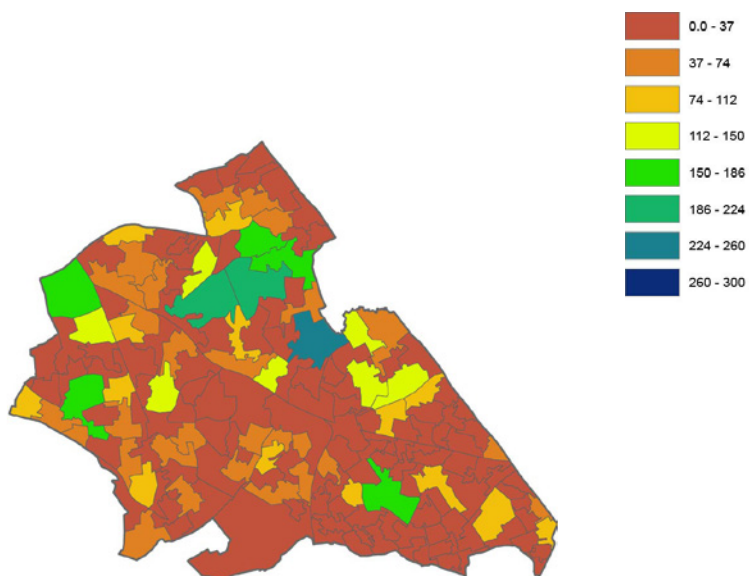
Annual person savings: £35

### Physical health savings

Total value: £394 million

Annual person savings: £66

0 0.3 0.6 1.2 1.8 2.4 Miles



**FIGURE 3**

Mental health expenditure savings per person in Brent (£)

## Other benefits

### Recreational benefits

Total value: £419 million

### Carbon storage

Total value: £2.5 million

### Temperature regulation

Total value: £22 million

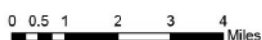
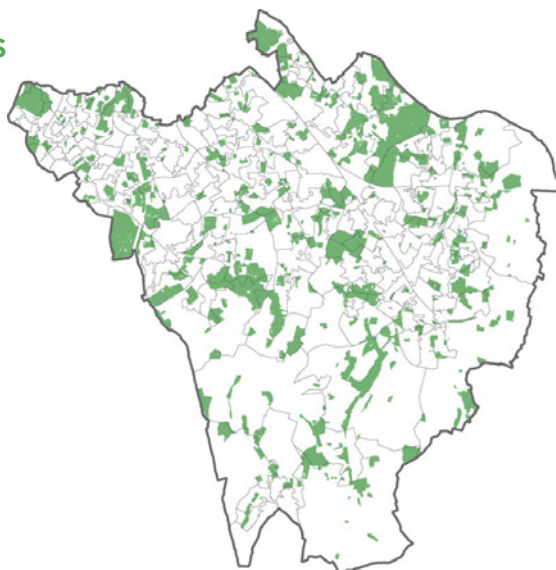
# Bromley

## Type and quantity of public parks

**Borough area:** 15,013 hectares

**Publicly accessible parks:** 2,585 hectares

Bromley is ranked as the 20th greenest out of the 33 London boroughs in terms of proportion of area under publicly accessible greenspace.



**FIGURE 1**

Publicly accessible greenspace in Bromley

## Total value

**Total value:** £3.3 billion

**Benefit-cost ratio:** 17

**Annual person value:** £551

**TABLE 1**

Value of public parks in Bromley

ASSETS	PUBLIC SERVICES	HOUSEHOLD	BUSINESS	VALUE	%
Recreation		696		696	20
Mental health	60	152	87	299	9
Physical health	79	201	114	394	11
Property		2,064		2,604	59
Carbon				24	1
Temperature		22		22	1
Value	139	3,136	201	3,499	100
	4%	90%	6%		

Note: All values are expressed in million £s

## Property

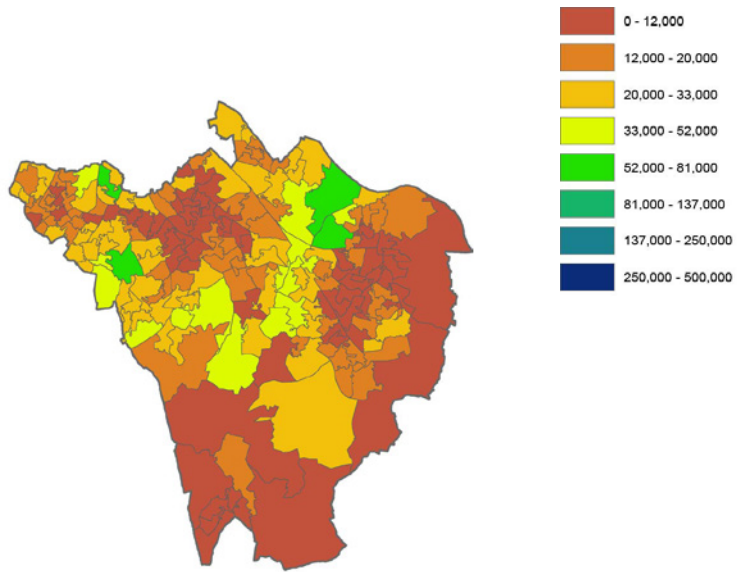
Total value: £2.1 billion

Value as proportion of property value: 4 per cent

Per household value: £15,773

Annual per person value: £405

0 0.5 1 2 3 4 Miles



**FIGURE 2**

Average amenity value revealed through property price per household in Bromley (£)

## Health

### Mental health savings

Total value: £299 million

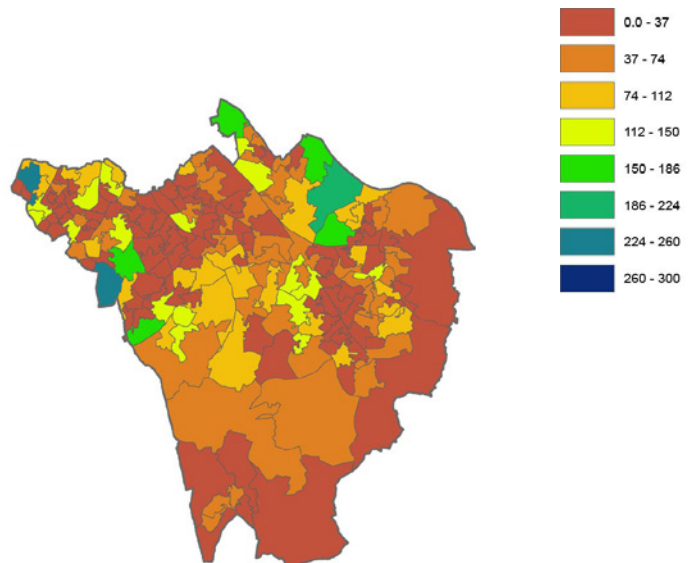
Annual person savings: £50

### Physical health savings

Total value: £394 million

Annual person savings: £66

0 0.5 1 2 3 4 Miles



**FIGURE 3**

Mental health expenditure savings per person in Bromley (£)

## Other benefits

### Recreational benefits

Total value: £696 million

### Carbon storage

Total value: £23.7 million

### Temperature regulation

Total value: £22 million

# Camden

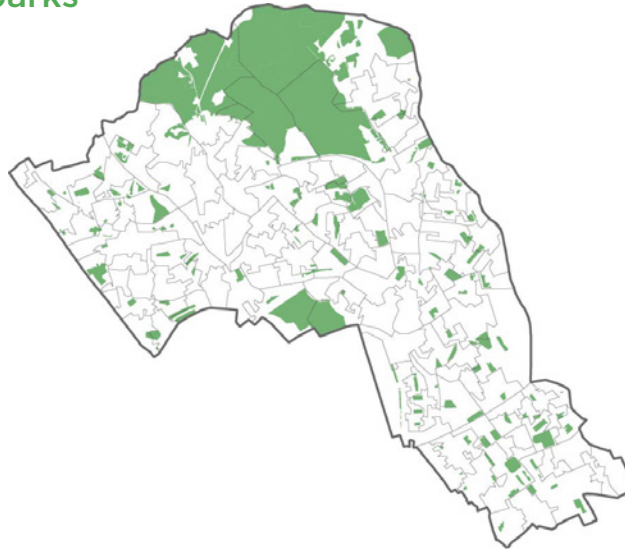
## Type and quantity of public parks

**Borough area:** 2,180 hectares

**Publicly accessible parks:** 435 hectares

Camden is ranked as the 12th greenest out of the 33 London boroughs in terms of proportion of area under publicly accessible greenspace.

0 0.25 0.5 1 1.5 2 Miles



**FIGURE 1**

Publicly accessible parks in Camden

## Total value

**Total value:** £3.3 billion

**Benefit-cost ratio:** 39:1

**Annual person value:** £768

**TABLE 1**

Value of public parks in Camden

ASSETS	PUBLIC SERVICES	HOUSEHOLD	BUSINESS	VALUE	%
Recreation		633		633	19
Mental health	26	66	37	129	4
Physical health	62	159	90	312	9
Property		2,317		2,317	68
Carbon				0	<1
Temperature		17		17	1
Value	88	3,193	128	3,408	100
	3%	93%	4%		

Note: All values are expressed in million £s

## Property

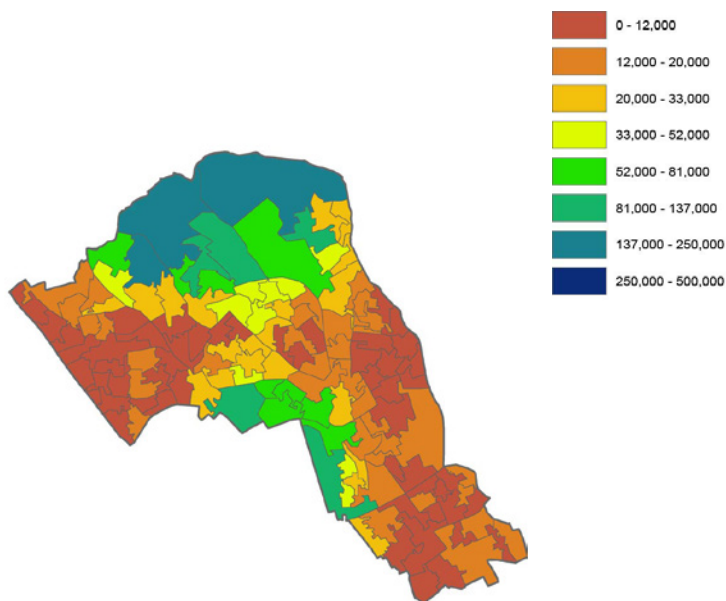
Total value: £2.3 billion

Value as proportion of property value: 3 per cent

Per household value: £23,754

Annual per person value: £573

0 0.25 0.5 1 1.5 2 Miles



**FIGURE 2**

Average property price uplift per household in Camden (£)

## Health

### Mental health savings

Total value: £129 million

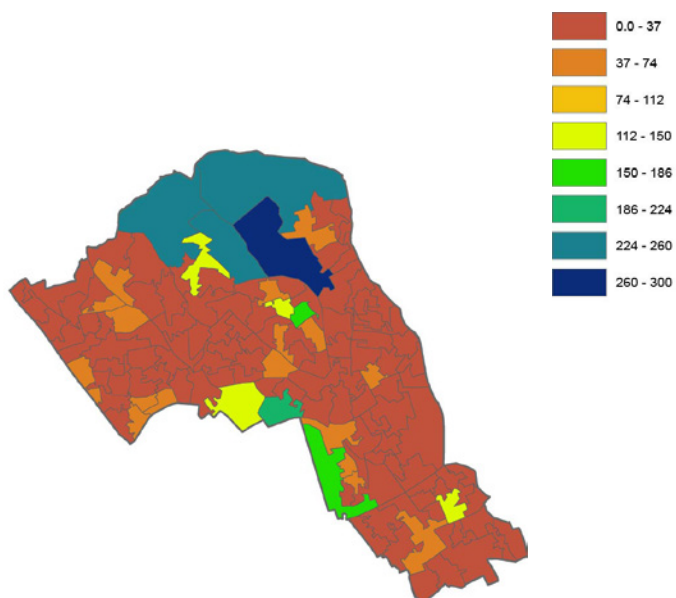
Annual person savings: £29

### Physical health savings

Total value: £312 million

Annual person savings: £70

0 0.25 0.5 1 1.5 2 Miles



**FIGURE 3**

Mental health expenditure savings per person Camden (£)

## Other benefits

### Recreational benefits

Total value: £633 million

### Carbon storage

Total value: £0.08 million

### Temperature regulation

Total value: £18 million

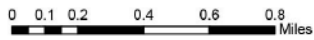
# City of London

## Type and quantity of public parks

**Borough area:** 315 hectares

**Publicly accessible parks:** 16 hectares

City of London is ranked as the 33rd greenest out of the 33 London boroughs in terms of proportion of area under publicly accessible greenspace.



**FIGURE 1**

Publicly accessible greenspace in City of London

## Total value

**Total value:** £91 million

**Benefit-cost ratio:** 4

**Annual person value:** £566

**TABLE 1**

Value of public parks in City of London

ASSETS	PUBLIC SERVICES	HOUSEHOLD	BUSINESS	VALUE	%
Recreation		72		72	57
Mental health	1.4	3	2	7	5
Physical health	2.3	6	3	11	9
Property		36		36	28
Carbon				0	<1
Temperature		22		1	<1
Value	3.6	117	5	126	100
	3%	93%	4%		

Note: All values are expressed in million £s



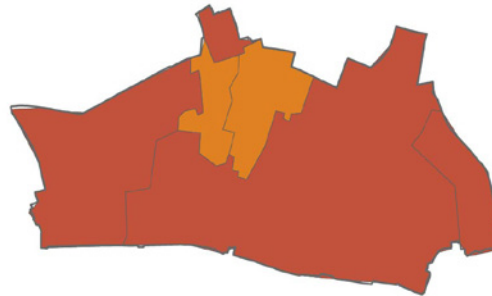
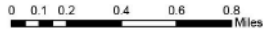
## Property

Total value: £36 million

Value as proportion of property value: 1 per cent

Per household value: £8,104

Annual per person value: £278



**FIGURE 2**

Average amenity value revealed through property price per household in City of London (£)

## Health

### Mental health savings

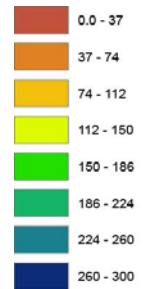
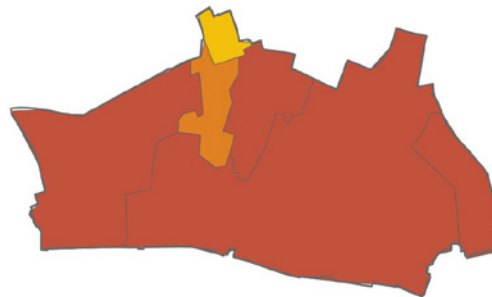
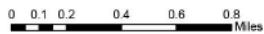
Total value: £6.9 million

Annual person savings: £43

### Physical health savings

Total value: £11 million

Annual person savings: £70



**FIGURE 3**

Mental health expenditure savings per person in City of London (£)

## Other benefits

### Recreational benefits

Total value: £72 million

### Carbon storage

Total value: £0.01 million

### Temperature regulation

Total value: £1 million

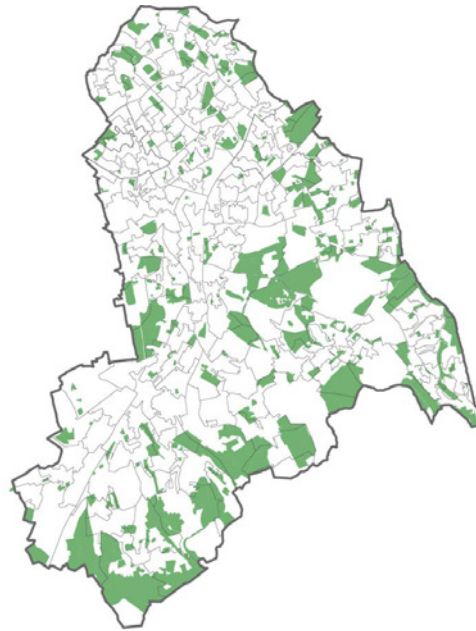
# Croydon

## Type and quantity of public parks

**Borough area:** 8,649 hectares

**Publicly accessible parks:** 1,909 hectares

Croydon is ranked as the 7th greenest out of the 33 London boroughs in terms of proportion of area under publicly accessible greenspace.



**FIGURE 1**  
Publicly accessible greenspace in Croydon

## Total value

**Total value:** £2.8 billion

**Benefit-cost ratio:** 18

**Annual person value:** £405

**TABLE 1**  
Value of public parks in Croydon

ASSETS	PUBLIC SERVICES	HOUSEHOLD	BUSINESS	VALUE	%
Recreation		5,956		595	20
Mental health	62	159	90	312	10
Physical health	89	226	128	443	15
Property		1,597		1,597	53
Carbon				24	1
Temperature		22		26	1
Value	151	2,603	219	2,997	100
	5%	87%	7%		

Note: All values are expressed in million £s

## Property

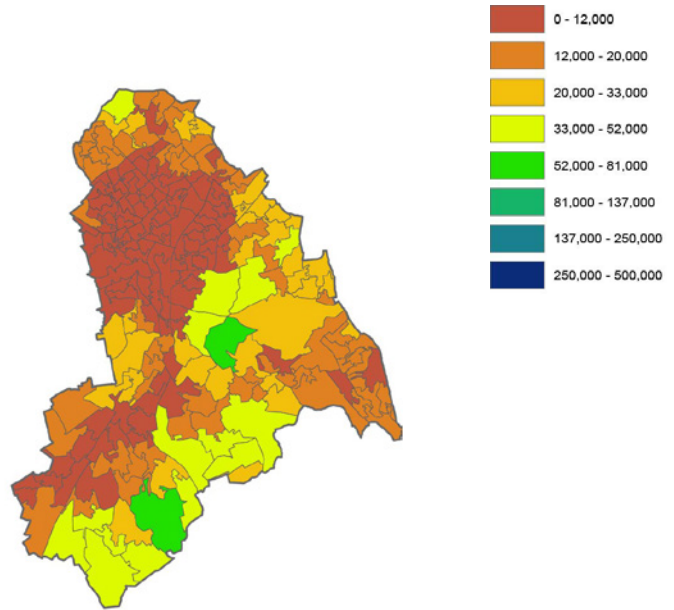
Total value: £1.6 billion

Value as proportion of property value: 3 per cent

Per household value: £11,014

Annual per person value: £284

0 0.5 1 2 3 4 Miles



**FIGURE 2**

Average amenity value revealed through property price per household in Croydon (£)

## Health

### Mental health savings

Total value: £312 million

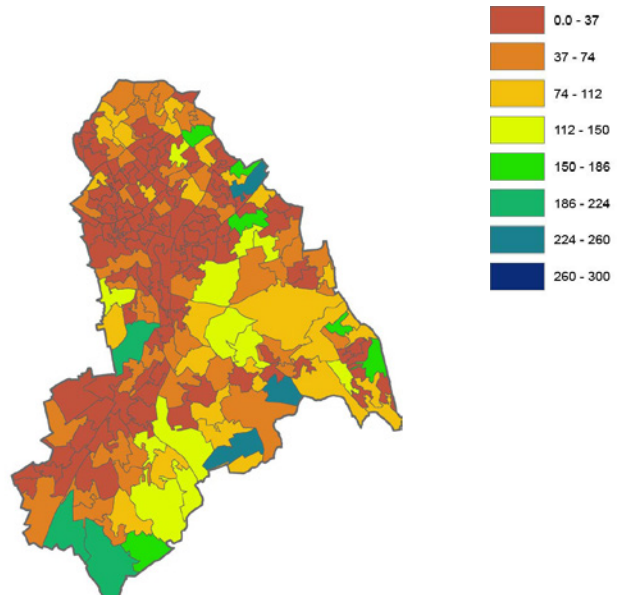
Annual person savings: £45

### Physical health savings

Total value: £443 million

Annual person savings: £64

0 0.5 1 2 3 4 Miles



**FIGURE 3**

Mental health expenditure savings per person in Croydon (£)

## Other benefits

### Recreational benefits

Total value: £595 million

### Carbon storage

Total value: £23.5 million

### Temperature regulation

Total value: £26 million

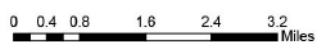
# Ealing

## Type and quantity of public parks

**Borough area:** 5,554 hectares

**Publicly accessible parks:** 1,065 hectares

Ealing is ranked as the 15th greenest out of the 33 London boroughs in terms of proportion of area under publicly accessible greenspace.



**FIGURE 1**

Publicly accessible greenspace in Ealing

## Total value

**Total value:** £3.5 billion

**Benefit-cost ratio:** 26

**Annual person value:** £550

**TABLE 1**

Value of public parks in Ealing

ASSETS	PUBLIC SERVICES	HOUSEHOLD	BUSINESS	VALUE	%
Recreation		779		779	22
Mental health	59	151	86	295	8
Physical health	88	225	128	441	12
Property		2,060		2,060	57
Carbon				7	<1
Temperature		23		23	1
Value	147	3,239	213	3,606	100
	4%	90%	6%		

Note: All values are expressed in million £s

## Property

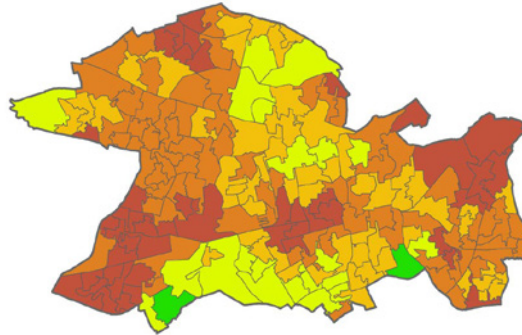
Total value: £2.1 billion

Value as proportion of property value: 4 per cent

Per household value: £16,606

Annual per person value: £386

0 0.4 0.8 1.6 2.4 3.2 Miles



**FIGURE 2**

Average amenity value revealed through property price per household in Ealing (£)

## Health

### Mental health savings

Total value: £295 million

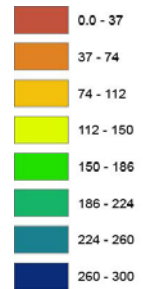
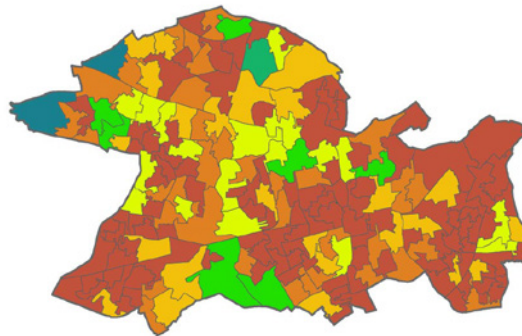
Annual person savings: £47

### Physical health savings

Total value: £441 million

Annual person savings: £70

0 0.4 0.8 1.6 2.4 3.2 Miles



**FIGURE 3**

Mental health expenditure savings per person in Ealing (£)

## Other benefits

### Recreational benefits

Total value: £779 million

### Carbon storage

Total value: £6.98 million

### Temperature regulation

Total value: £23 million

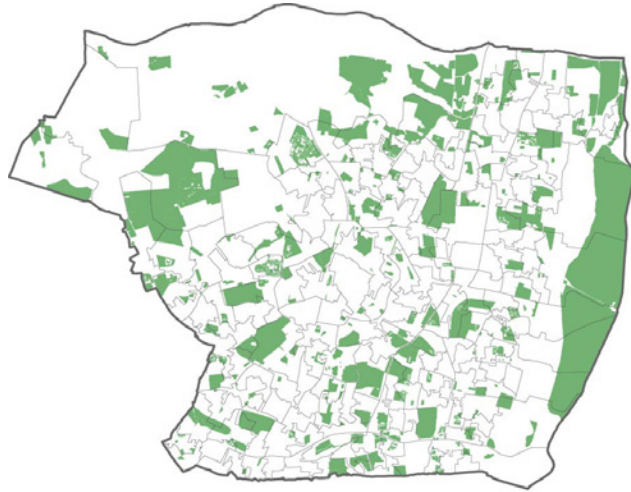
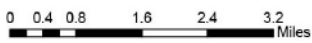
# Enfield

## Type and quantity of public parks

**Borough area:** 8,220 hectares

**Publicly accessible parks:** 1,741 hectares

Enfield is ranked as the 9th greenest out of the 33 London boroughs in terms of proportion of area under publicly accessible greenspace.



**FIGURE 1**  
Publicly accessible greenspace in Enfield

## Total value

**Total value:** £2.8 billion

**Benefit-cost ratio:** 21

**Annual person value:** £463

**TABLE 1**  
Value of public parks in Enfield

ASSETS	PUBLIC SERVICES	HOUSEHOLD	BUSINESS	VALUE	%
Recreation		629		629	21
Mental health	57	145	83	285	10
Physical health	85	217	123	425	14
Property		1,575		1,575	54
Carbon				4	<1
Temperature		22		22	1
Value	142	2,589	206	2,940	100
	5%	88%	7%		

Note: All values are expressed in million £s

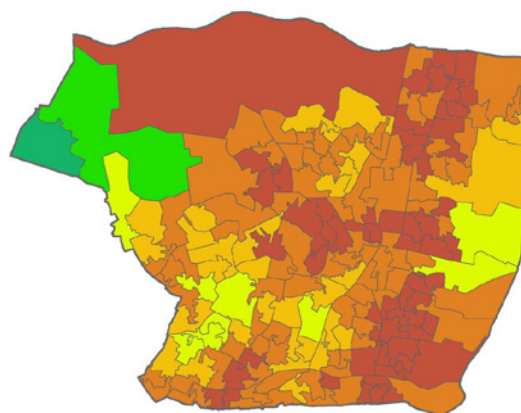
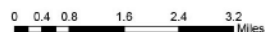
## Property

Total value: £1.6 billion

Value as proportion of property value: 4 per cent

Per household value: £13,135

Annual per person value: £321



**FIGURE 2**

Average amenity value revealed through property price per household in Enfield (£)

## Health

### Mental health savings

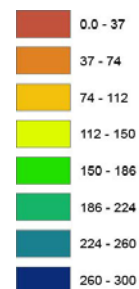
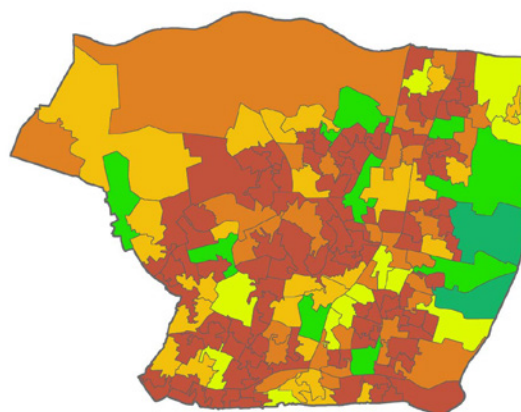
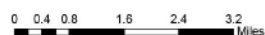
Total value: £285 million

Annual person savings: £47

### Physical health savings

Total value: £425 million

Annual person savings: £70



**FIGURE 3**

Mental health expenditure savings per person in Enfield (£)

## Other benefits

### Recreational benefits

Total value: £629 million

### Carbon storage

Total value: £3.55 million

### Temperature regulation

Total value: £22 million

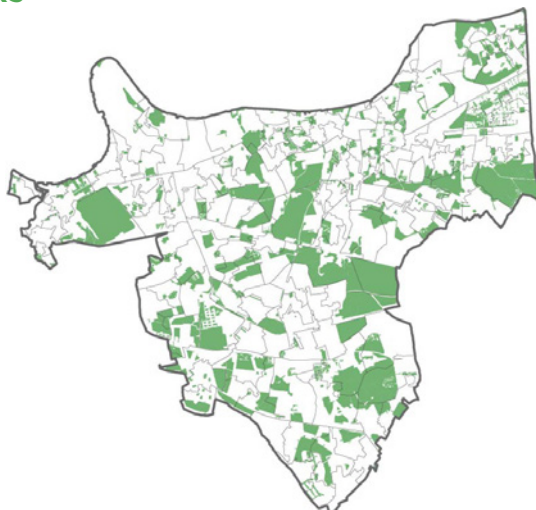
# Greenwich

## Type and quantity of public parks

**Borough area:** 5,044 hectares

**Publicly accessible parks:** 1,183 hectares

Greenwich is ranked as the 6th greenest out of the 33 London boroughs in terms of proportion of area under publicly accessible greenspace.



**FIGURE 1**

Publicly accessible greenspace in Greenwich

## Total value

**Total value:** £2.7 billion

**Benefit-cost ratio:** 19

**Annual person value:** £526

**TABLE 1**

Value of public parks in Greenwich

ASSETS	PUBLIC SERVICES	HOUSEHOLD	BUSINESS	VALUE	%
Recreation		551		551	20
Mental health	59	151	86	297	11
Physical health	67	170	97	333	12
Property		1,605		1,605	57
Carbon				6	<1
Temperature		19		19	1
Value	126	2,496	183	2,810	100
	4%	89%	6%		

Note: All values are expressed in million £s



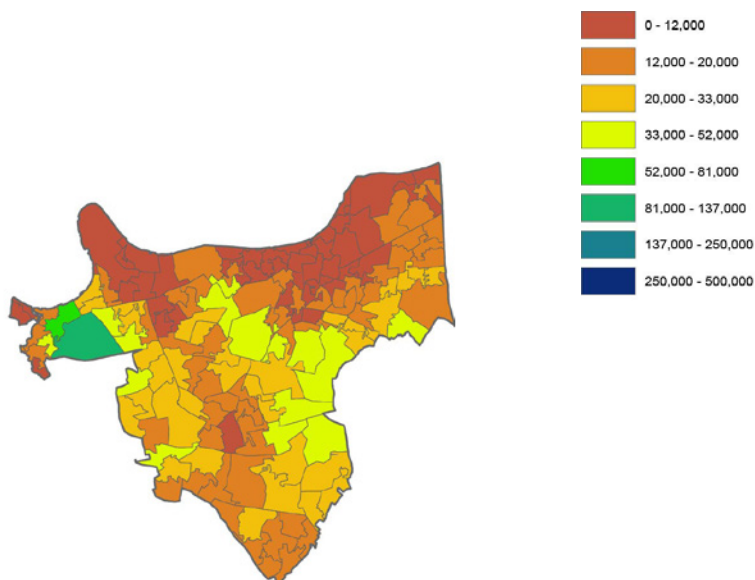
## Property

Total value: £1.6 billion

Value as proportion of property value: 5 per cent

Per household value: £15,882

Annual per person value: £381



**FIGURE 2**

Average amenity value revealed through property price per household in Greenwich (£)

## Health

### Mental health savings

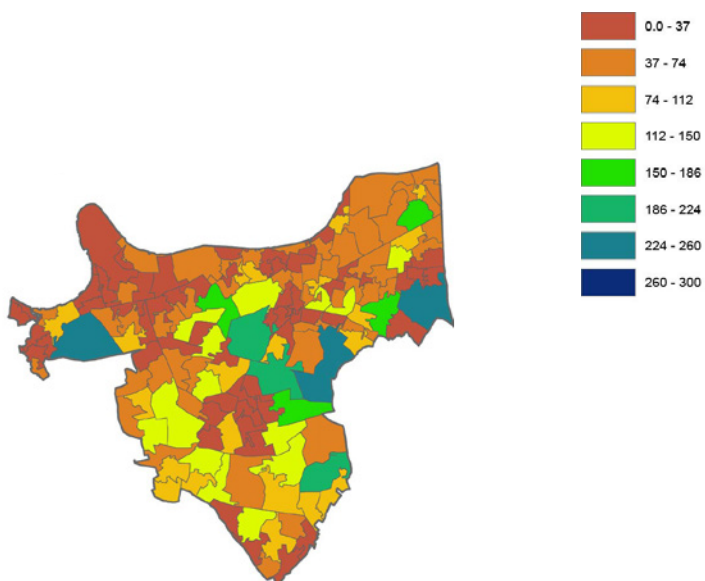
Total value: £297 million

Annual person savings: £59

### Physical health savings

Total value: £333 million

Annual person savings: £66



**FIGURE 3**

Mental health expenditure savings per person in Greenwich (£)

## Other benefits

### Recreational benefits

Total value: £551 million

### Carbon storage

Total value: £6.2 million

### Temperature regulation

Total value: £19 million

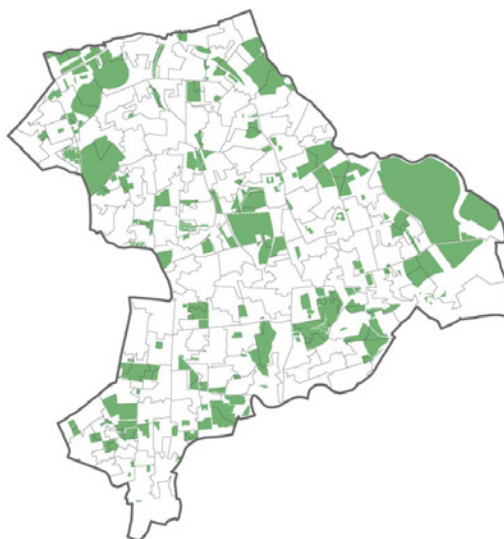
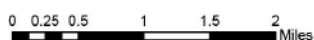
# Hackney

## Type and quantity of public parks

**Borough area:** 1,905 hectares

**Publicly accessible parks:** 506 hectares

Hackney is ranked as the 4th greenest out of the 33 London boroughs in terms of proportion of area under publicly accessible greenspace.



**FIGURE 1**

Publicly accessible greenspace in Hackney

## Total value

**Total value:** £3.2 billion

**Benefit-cost ratio:** 36

**Annual person value:** £646

**TABLE 1**

Value of public parks in Hackney

ASSETS	PUBLIC SERVICES	HOUSEHOLD	BUSINESS	VALUE	%
Recreation		363		363	11
Mental health	57	145	83	285	9
Physical health	70	178	101	348	11
Property		2,273		2,273	69
Carbon				1	<1
Temperature		18		18	1
Value	127	2,978	184	3,289	100
	4%	91%	6%		

Note: All values are expressed in million £s

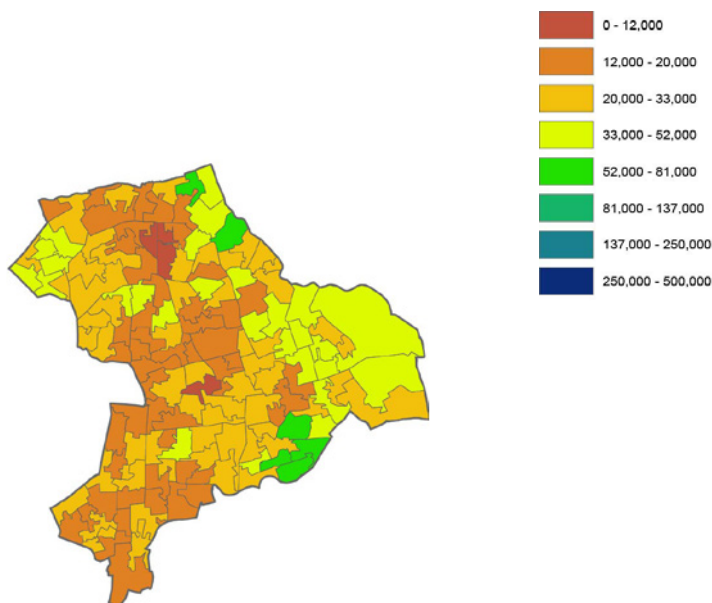
## Property

Total value: £2.3 billion

Value as proportion of property value: 4 per cent

Per household value: £22,353

Annual per person value: £525



**FIGURE 2**

Average amenity value revealed through property price per household in Hackney (£)

## Health

### Mental health savings

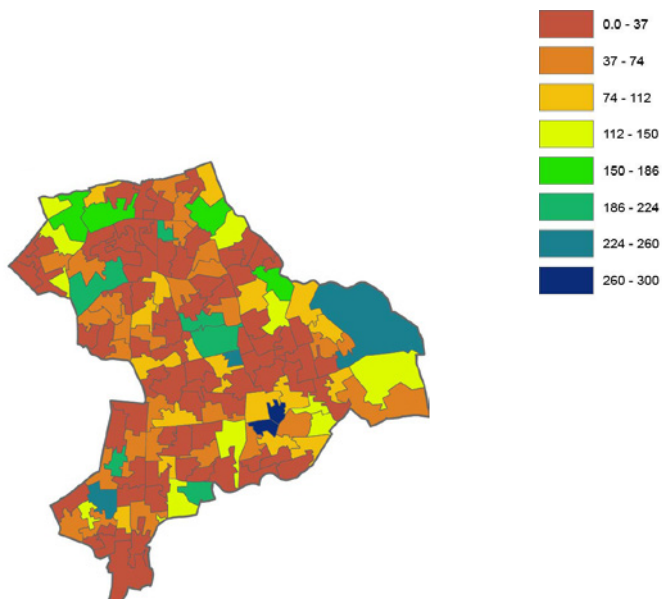
Total value: £285 million

Annual person savings: £58

### Physical health savings

Total value: £348 million

Annual person savings: £70



**FIGURE 3**

Mental health expenditure savings per person in Hackney (£)

## Other benefits

### Recreational benefits

Total value: £363 million

### Carbon storage

Total value: £0.63 million

### Temperature regulation

Total value: £18 million

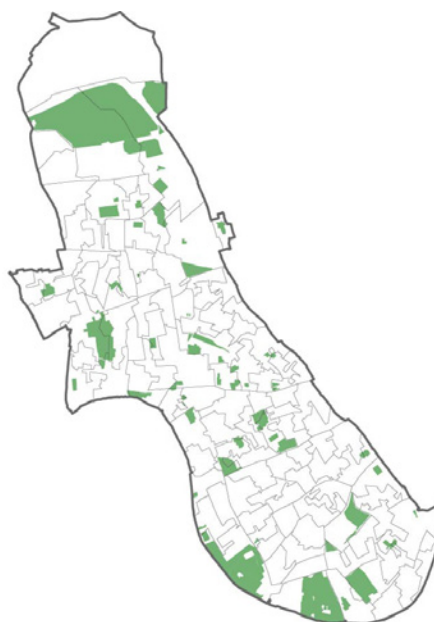
# Hammersmith and Fulham

## Type and quantity of public parks

**Borough area:** 1,715 hectares

**Publicly accessible parks:** 211 hectares

Hammersmith and Fulham is ranked as the 28th greenest out of the 33 London boroughs in terms of proportion of area under publicly accessible greenspace.



**FIGURE 1**

Publicly accessible greenspace in Hammersmith and Fulham

## Total value

**Total value:** £1.9 billion

**Benefit-cost ratio:** 24

**Annual person value:** £575

**TABLE 1**

Value of public parks in Hammersmith and Fulham

ASSETS	PUBLIC SERVICES	HOUSEHOLD	BUSINESS	VALUE	%
Recreation		326		326	16
Mental health	14	35	20	69	3
Physical health	46	118	67	232	12
Property		1,339		1,339	68
Carbon				<1	<1
Temperature		12		12	1
Value	60	1,831	87	1,979	100
	3%	93%	4%		

Note: All values are expressed in million £s

## Property

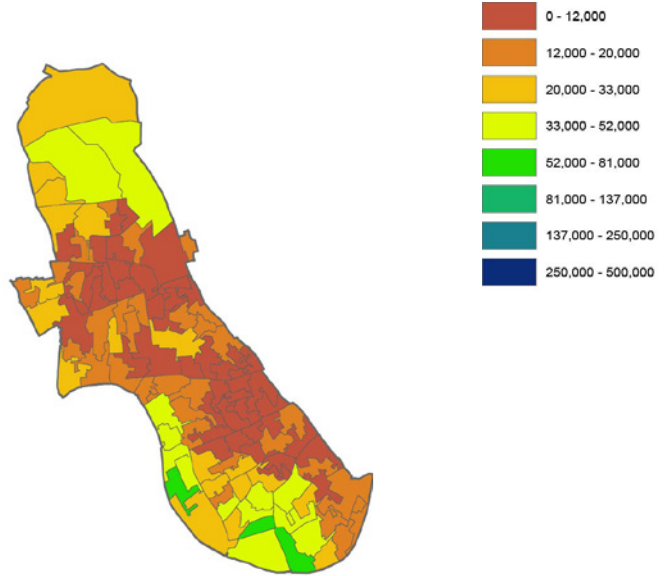
Total value: £1.3 billion

Value as proportion of property value: 2 per cent

Per household value: £16,615

Annual per person value: £452

0 0.25 0.5 1 1.5 2 Miles



**FIGURE 2**

Average amenity value revealed through property price per household in Hammersmith and Fulham (£)

## Health

### Mental health savings

Total value: £69 million

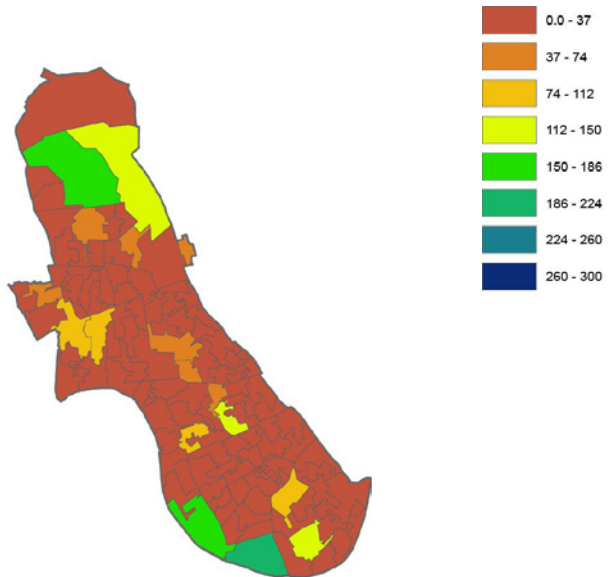
Annual person savings: £21

### Physical health savings

Total value: £232 million

Annual person savings: £70

0 0.25 0.5 1 1.5 2 Miles



**FIGURE 3**

Mental health expenditure savings per person in Hammersmith and Fulham (£)

## Other benefits

### Recreational benefits

Total value: £326 million

### Carbon storage

Total value: £0.10 million

### Temperature regulation

Total value: £12 million

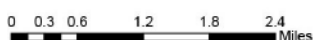
# Haringey

## Type and quantity of public parks

**Borough area:** 2,960 hectares

**Publicly accessible parks:** 548 hectares

Haringey is ranked as the 16th greenest out of the 33 London boroughs in terms of proportion of area under publicly accessible greenspace.



**FIGURE 1**

Publicly accessible greenspace in Haringey

## Total value

**Total value:** £2.9 billion

**Benefit-cost ratio:** 25

**Annual person value:** £577

**TABLE 1**

Value of public parks in Haringey

ASSETS	PUBLIC SERVICES	HOUSEHOLD	BUSINESS	VALUE	%
Recreation		447		447	15
Mental health	41	105	60	206	7
Physical health	71	180	102	353	12
Property		1,991		1,991	66
Carbon				2	<1
Temperature		19		19	1
Value	112	2,742	162	3,017	100
	4%	91%	5%		

Note: All values are expressed in million £s

## Property

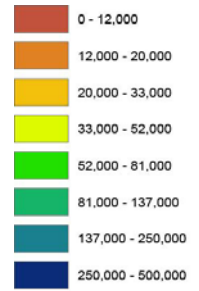
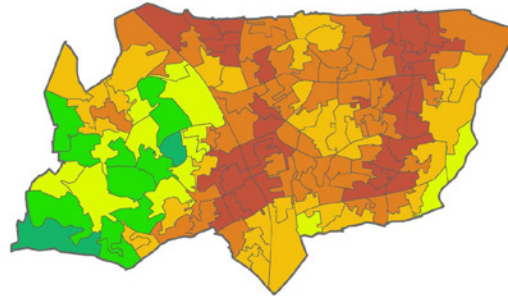
Total value: £2.0 billion

Value as proportion of property value: 4 per cent

Per household value: £19,526

Annual per person value: £453

0 0.3 0.6 1.2 1.8 2.4 Miles



**FIGURE 2**

Average amenity value revealed through property price per household in Haringey (£)

## Health

### Mental health savings

Total value: £206 million

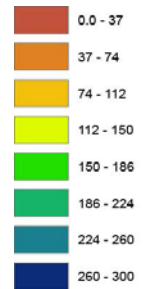
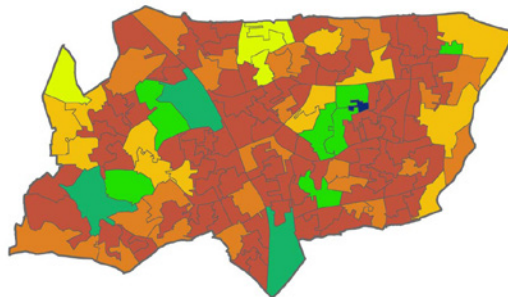
Annual person savings: £41

### Physical health savings

Total value: £353 million

Annual person savings: £70

0 0.3 0.6 1.2 1.8 2.4 Miles



**FIGURE 3**

Mental health expenditure savings per person in Haringey (£)

## Other benefits

### Recreational benefits

Total value: £447 million

### Carbon storage

Total value: £1.96 million

### Temperature regulation

Total value: £19 million

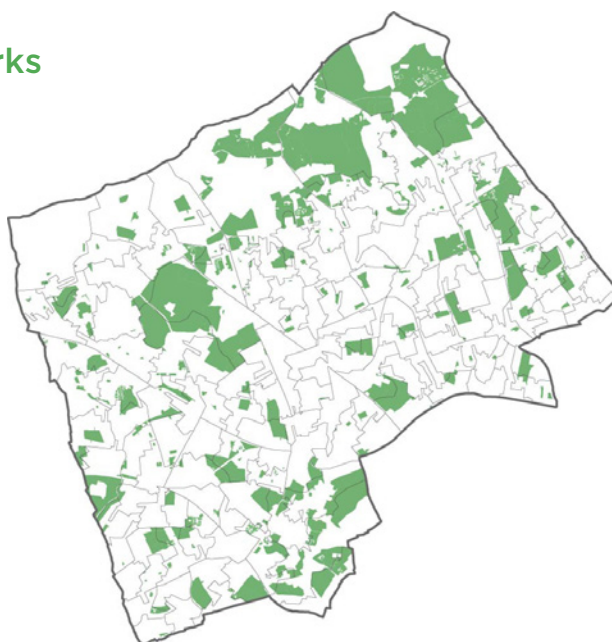
# Harrow

## Type and quantity of public parks

**Borough area:** 5,046 hectares

**Publicly accessible parks:** 1,028 hectares

Harrow is ranked as the 10th greenest out of the 33 London boroughs in terms of proportion of area under publicly accessible greenspace.



**FIGURE 1**  
Publicly accessible greenspace in Harrow

## Total value

**Total value:** £1.9 billion

**Benefit-cost ratio:** 35

**Annual person value:** £428

**TABLE 1**  
Value of public parks in Harrow

ASSETS	PUBLIC SERVICES	HOUSEHOLD	BUSINESS	VALUE	%
Recreation		349		349	17
Mental health	37	95	54	187	9
Physical health	47	120	68	235	12
Property		1,205		1,205	60
Carbon				8.2	<1
Temperature		17		17	1
Value	84	1,786	122	2,001	100
	4%	89%	6%		

Note: All values are expressed in million £s



## Property

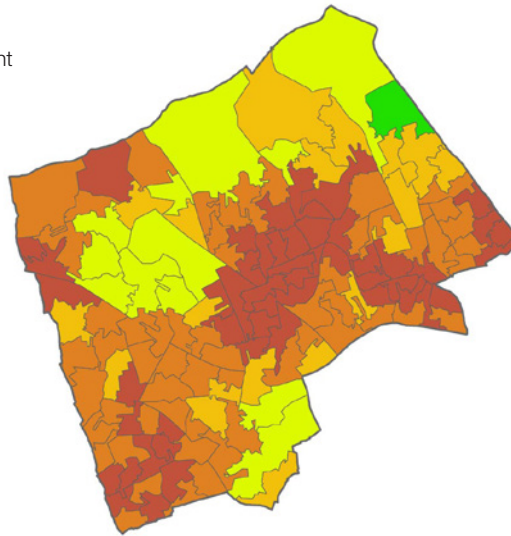
Total value: £1.2 billion

Value as proportion of property value: 3 per cent

Per household value: £14,296

Annual per person value: £312

0 0.3 0.6 1.2 1.8 2.4 Miles



**FIGURE 2**

Average amenity value revealed through property price per household in Harrow (£)

## Health

### Mental health savings

Total value: £187 million

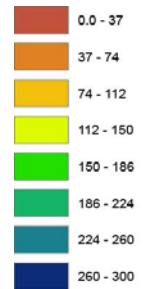
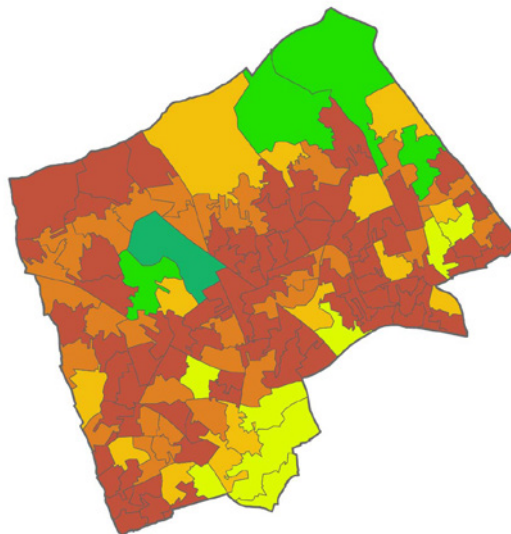
Annual person savings: £41

### Physical health savings

Total value: £235 million

Annual person savings: £52

0 0.3 0.6 1.2 1.8 2.4 Miles



**FIGURE 3**

Mental health expenditure savings per person in Harrow (£)

## Other benefits

### Recreational benefits

Total value: £349 million

### Carbon storage

Total value: £8.20 million

### Temperature regulation

Total value: £17 million

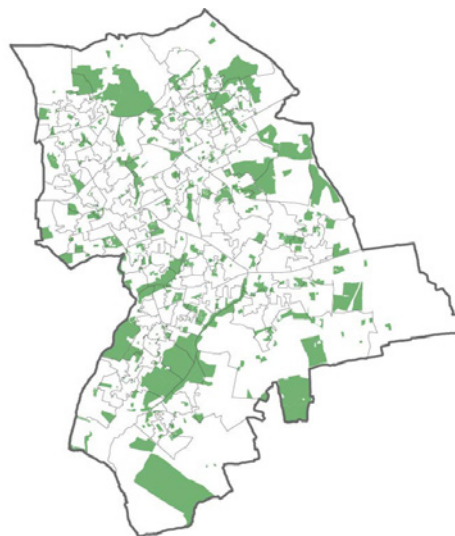
# Havering

## Type and quantity of public parks

**Borough area:** 11,446 hectares

**Publicly accessible parks:** 2,078 hectares

Havering is ranked as the 18th greenest out of the 33 London boroughs in terms of proportion of area under publicly accessible greenspace.



**FIGURE 1**

Publicly accessible greenspace in Havering

## Total value

**Total value:** £2.0 billion

**Benefit-cost ratio:** 27

**Annual person value:** £439

**TABLE 1**

Value of public parks in Havering

ASSETS	PUBLIC SERVICES	HOUSEHOLD	BUSINESS	VALUE	%
Recreation		560		560	27
Mental health	42	106	61	209	10
Physical health	50	127	72	250	12
Property		1,036		1,036	50
Carbon				18	1
Temperature		17		17	1
Value	92	1,847	133	2,090	100
	4%	88%	6%		

Note: All values are expressed in million £s

## Property

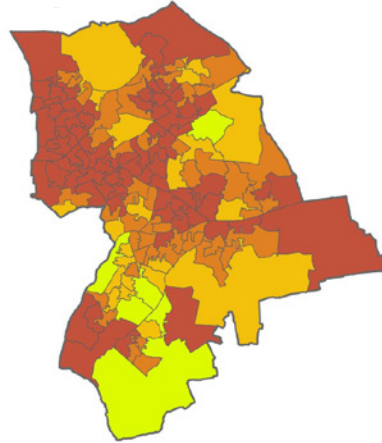
Total value: £1.0 billion

Value as proportion of property value: 3 per cent

Per household value: £10,660

Annual per person value: £277

0 0.5 1 2 3 4 Miles



**FIGURE 2**

Average amenity value revealed through property price per household in Havering (£)

## Health

### Mental health savings

Total value: £209 million

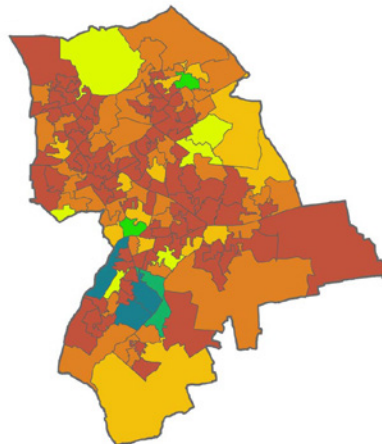
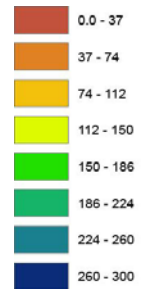
Annual person savings: £46

### Physical health savings

Total value: £250 million

Annual person savings: £54

0 0.5 1 2 3 4 Miles



**FIGURE 3**

Mental health expenditure savings per person in Havering (£)

## Other benefits

### Recreational benefits

Total value: £560 million

### Carbon storage

Total value: £17.67 million

### Temperature regulation

Total value: £17 million

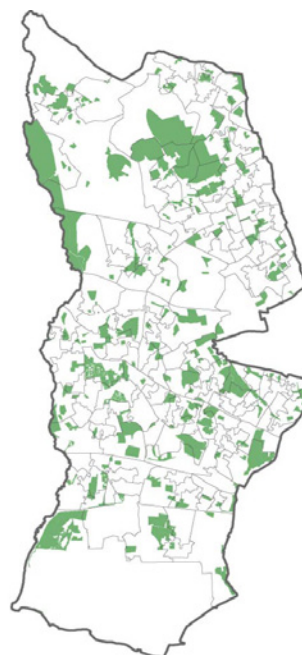
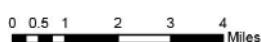
# Hillingdon

## Type and quantity of public parks

**Borough area:** 11,570 hectares

**Publicly accessible parks:** 1,764 hectares

Hillingdon is ranked as the 22nd greenest out of the 33 London boroughs in terms of proportion of area under publicly accessible greenspace.



**FIGURE 1**

Publicly accessible greenspace in Hillingdon

## Total value

**Total value:** £2.2 billion

**Benefit-cost ratio:** 23

**Annual person value:** £402

**TABLE 1**

Value of public parks in Hillingdon

ASSETS	PUBLIC SERVICES	HOUSEHOLD	BUSINESS	VALUE	%
Recreation		577		577	25
Mental health	48	124	70	242	11
Physical health	72	183	104	358	16
Property		1,086		1,086	47
Carbon				18	1
Temperature		20		20	1
Value	120	1,990	174	2,302	100
	5%	86%	8%		

Note: All values are expressed in million £s

## Property

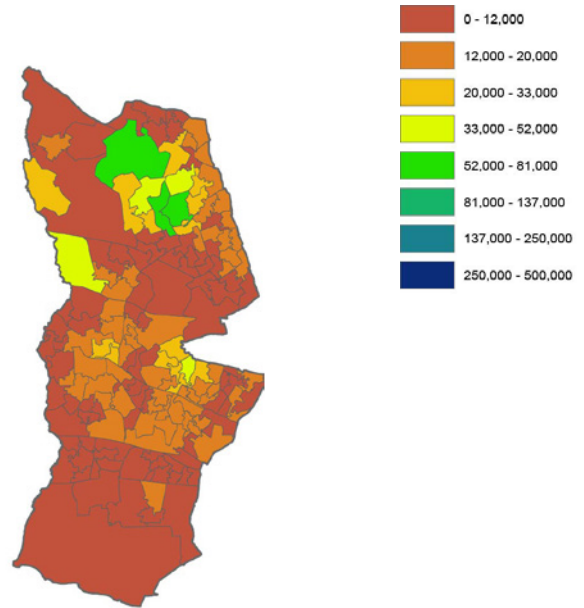
Total value: £1.1 billion

Value as proportion of property value: 3 per cent

Per household value: £10,839

Annual per person value: £254

0 0.5 1 2 3 4 Miles



**FIGURE 2**

Average amenity value revealed through property price per household in Hillingdon (£)

## Health

### Mental health savings

Total value: £242 million

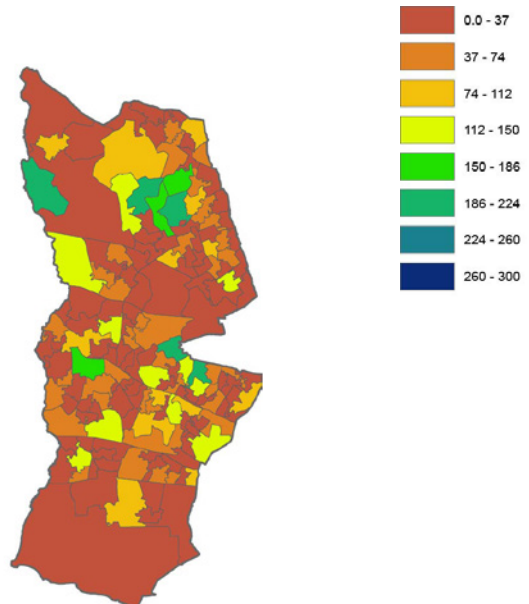
Annual person savings: £44

### Physical health savings

Total value: £358 million

Annual person savings: £65

0 0.5 1 2 3 4 Miles



**FIGURE 3**

Mental health expenditure savings per person in Hillingdon (£)

## Other benefits

### Recreational benefits

Total value: £577 million

### Carbon storage

Total value: £18.08 million

### Temperature regulation

Total value: £20 million

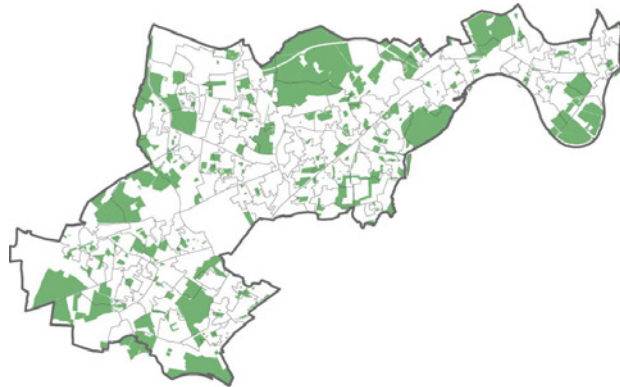
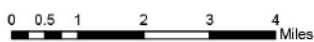
# Hounslow

## Type and quantity of public parks

**Borough area:** 5,659 hectares

**Publicly accessible parks:** 1,568 hectares

Hounslow is ranked as the 3rd greenest out of the 33 London boroughs in terms of proportion of area under publicly accessible greenspace.



**FIGURE 1**

Publicly accessible greenspace in Hounslow

## Total value

**Total value:** £2.9 billion

**Benefit-cost ratio:** 26

**Annual person value:** £577

**TABLE 1**

Value of public parks in Hounslow

ASSETS	PUBLIC SERVICES	HOUSEHOLD	BUSINESS	VALUE	%
Recreation		705		705	24
Mental health	52	133	76	261	9
Physical health	69	177	101	347	12
Property		1,633		1,633	55
Carbon				18	1
Temperature		18		18	1
Value	122	2,667	176	2,970	100
	4%	90%	6%		

Note: All values are expressed in million £s

## Property

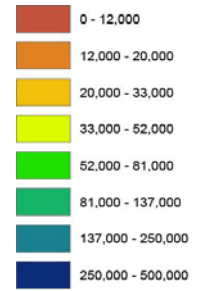
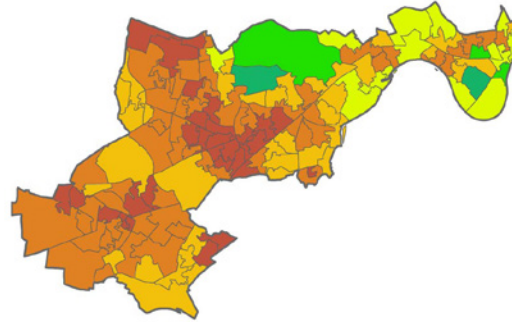
Total value: £1.6 billion

Value as proportion of property value: 4 per cent

Per household value: £17,210

Annual per person value: £393

0 0.5 1 2 3 4 Miles



**FIGURE 2**

Average amenity value revealed through property price per household in Hounslow (£)

## Health

### Mental health savings

Total value: £261 million

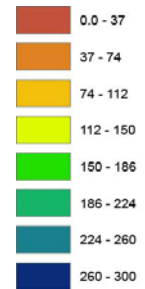
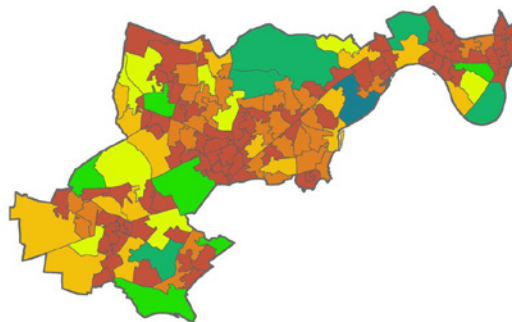
Annual person savings: £53

### Physical health savings

Total value: £347 million

Annual person savings: £70

0 0.5 1 2 3 4 Miles



**FIGURE 3**

Mental health expenditure savings per person in Hounslow (£)

## Other benefits

### Recreational benefits

Total value: £705 million

### Carbon storage

Total value: £5.13 million

### Temperature regulation

Total value: £18 million

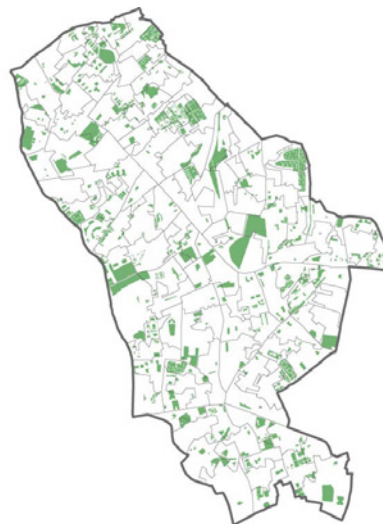
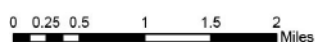
# Islington

## Type and quantity of public parks

**Borough area:** 1,486 hectares

**Publicly accessible parks:** 155 hectares

Islington is ranked as the 31st greenest out of the 33 London boroughs in terms of proportion of area under publicly accessible greenspace.



**FIGURE 1**

Publicly accessible greenspace in Islington

## Total value

**Total value:** £2.0 billion

**Benefit-cost ratio:** 23

**Annual person value:** £488

**TABLE 1**

Value of public parks in Islington

ASSETS	PUBLIC SERVICES	HOUSEHOLD	BUSINESS	VALUE	%
Recreation		424		424	20
Mental health	28	70	40	138	6
Physical health	59	150	85	295	14
Property		1,264		1,264	59
Carbon				<1	<1
Temperature		16		16	1
Value	87	1,923	126	2,136	100
	4%	90%	6%		

Note: All values are expressed in million £s



## Property

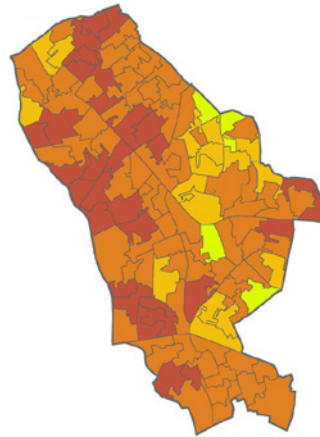
Total value: £1.3 billion

Value as proportion of property value: 2 per cent

Per household value: £13,506

Annual per person value: £354

0 0.25 0.5 1 1.5 2 Miles



**FIGURE 2**

Average amenity value revealed through property price per household in Islington (£)

## Health

### Mental health savings

Total value: £138 million

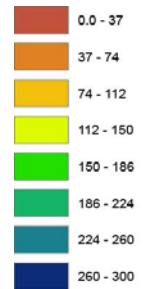
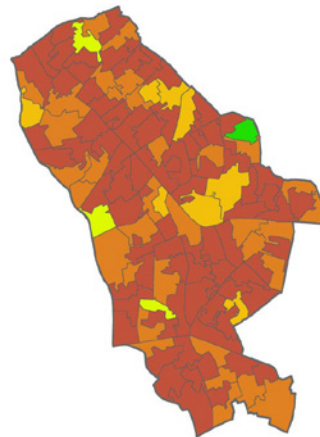
Annual person savings: £33

### Physical health savings

Total value: £295 million

Annual person savings: £70

0 0.25 0.5 1 1.5 2 Miles



**FIGURE 3**

Mental health expenditure savings per person in Islington (£)

## Other benefits

### Recreational benefits

Total value: £424 million

### Carbon storage

Total value: £0.13 million

### Temperature regulation

Total value: £16 million

# Kensington and Chelsea

## Type and quantity of public parks

**Borough area:** 1,238 hectares

**Publicly accessible parks:** 159 hectares

Kensington and Chelsea is ranked as the 27th greenest out of the 33 London boroughs in terms of proportion of area under publicly accessible greenspace.



**FIGURE 1**  
Publicly accessible greenspace in Kensington and Chelsea

## Total value

**Total value:** £4.4 billion

**Benefit-cost ratio:** 58

**Annual person value:** £1,514

**TABLE 1**  
Value of public parks in Kensington and Chelsea

ASSETS	PUBLIC SERVICES	HOUSEHOLD	BUSINESS	VALUE	%
Recreation		226		226	5
Mental health	20	50	59	204	5
Physical health	59	150	85	295	14
Property		3,931		3,931	88
Carbon				<1	<1
Temperature		11		11	1
Value	60	4,322	88	4,470	100
	1%	97%	2%		

Note: All values are expressed in million £s

## Property

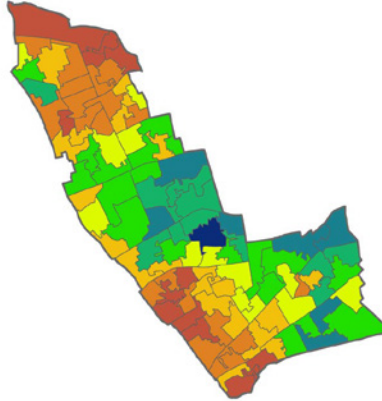
Total value: £3.9 billion

Value as proportion of property value: 4 per cent

Per household value: £50,048

Annual per person value: £1,408

0 0.25 0.5 1 1.5 2 Miles



**FIGURE 2**

Average amenity value revealed through property price per household in Kensington and Chelsea (£)

## Health

### Mental health savings

Total value: £98 million

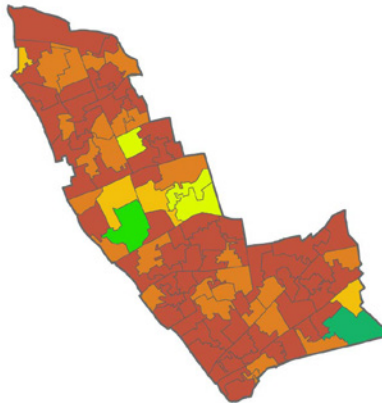
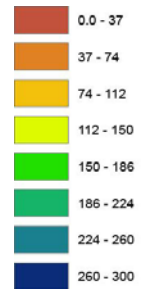
Annual person savings: £34

### Physical health savings

Total value: £204 million

Annual person savings: £70

0 0.25 0.5 1 1.5 2 Miles



**FIGURE 3**

Mental health expenditure savings per person in Kensington and Chelsea (£)

## Other benefits

### Recreational benefits

Total value: £226 million

### Carbon storage

Total value: £0.06 million

### Temperature regulation

Total value: £11 million

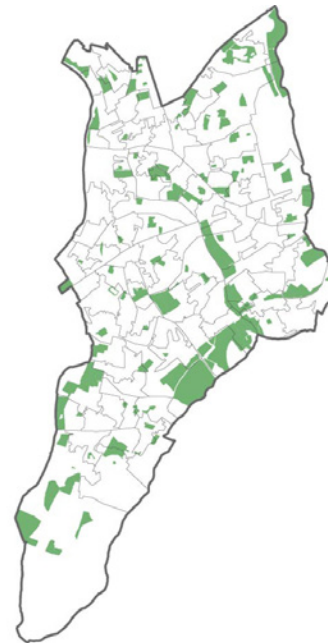
# Kingston upon Thames

## Type and quantity of public parks

**Borough area:** 3,726 hectares

**Publicly accessible parks:** 510 hectares

Kingston upon Thames is ranked as the 26th greenest out of the 33 London boroughs in terms of proportion of area under publicly accessible greenspace.



**FIGURE 1**  
Publicly accessible greenspace in Kingston upon Thames

## Total value

**Total value:** £1.5 billion

**Benefit-cost ratio:** 39

**Annual person value:** £484

**TABLE 1**  
Value of public parks in Kingston upon Thames

ASSETS	PUBLIC SERVICES	HOUSEHOLD	BUSINESS	VALUE	%
Recreation		295		295	19
Mental health	24	61	34	119	7
Physical health	45	114	65	224	14
Property		932		932	59
Carbon				2	<1
Temperature		12		12	1
Value	69	1,414	100	1,585	100
	4%	89%	6%		

Note: All values are expressed in million £s

## Property

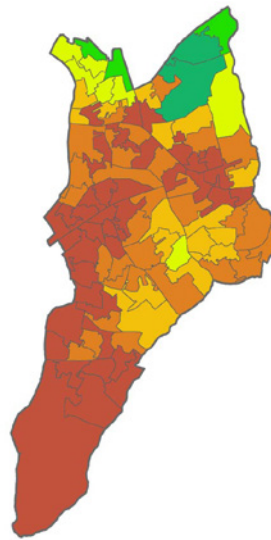
Total value: £932 billion

Value as proportion of property value: 3 per cent

Per household value: £14,651

Annual per person value: £347

0 0.4 0.8 1.6 2.4 3.2 Miles



**FIGURE 2**

Average amenity value revealed through property price per household in Kingston upon Thames (£)

## Health

### Mental health savings

Total value: £119 million

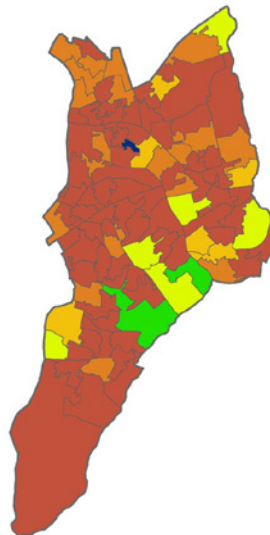
Annual person savings: £37

### Physical health savings

Total value: £224 million

Annual person savings: £70

0 0.4 0.8 1.6 2.4 3.2 Miles



**FIGURE 3**

Mental health expenditure savings per person in Kingston upon Thames (£)

## Other benefits

### Recreational benefits

Total value: £295 million

### Carbon storage

Total value: £2.41 million

### Temperature regulation

Total value: £12 million

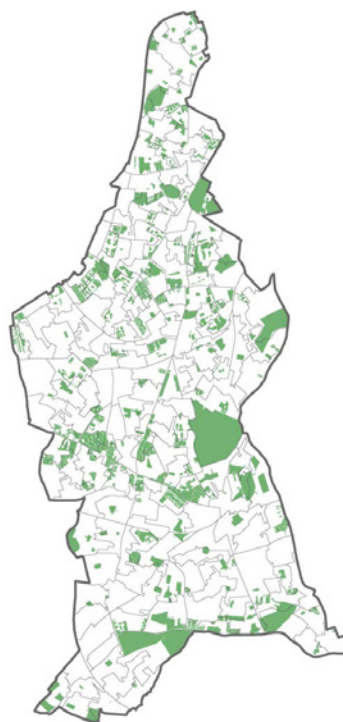
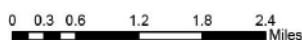
# Lambeth

## Type and quantity of public parks

**Borough area:** 2,725 hectares

**Publicly accessible parks:** 398 hectares

Lambeth is ranked as the 23rd greenest out of the 33 London boroughs in terms of proportion of area under publicly accessible greenspace.



**FIGURE 1**

Publicly accessible greenspace in Lambeth

## Total value

**Total value:** £3.1 billion

**Benefit-cost ratio:** 35

**Annual person value:** £512

**TABLE 1**

Value of public parks in Lambeth

ASSETS	PUBLIC SERVICES	HOUSEHOLD	BUSINESS	VALUE	%
Recreation		395		395	13
Mental health	51	131	74	257	8
Physical health	83	211	120	413	13
Property		2,055		2,055	65
Carbon				1	<1
Temperature		22		22	1
Value	134	2,814	194	3,143	100
	4%	90%	6%		

Note: All values are expressed in million £s

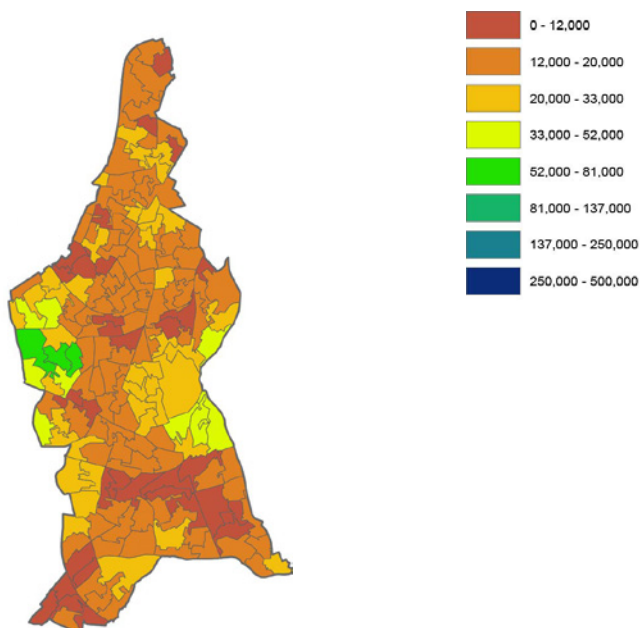
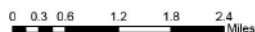
## Property

Total value: £2.1 billion

Value as proportion of property value: 3 per cent

Per household value: £15,805

Annual per person value: £402



**FIGURE 2**

Average amenity value revealed through property price per household in Lambeth (£)

## Health

### Mental health savings

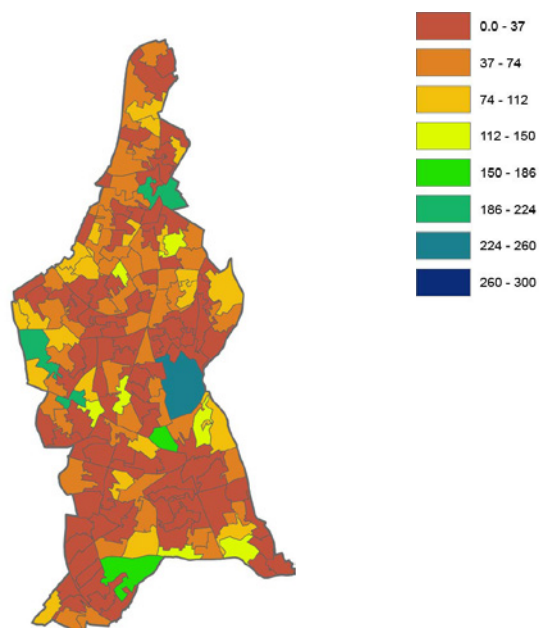
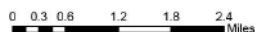
Total value: £257 million

Annual person savings: £43

### Physical health savings

Total value: £413 million

Annual person savings: £69



**FIGURE 3**

Mental health expenditure savings per person in Lambeth (£)

## Other benefits

### Recreational benefits

Total value: £395 million

### Carbon storage

Total value: £0.71 million

### Temperature regulation

Total value: £22 million

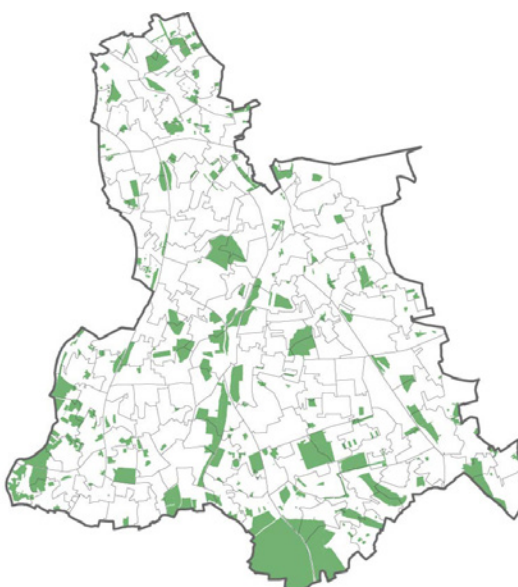
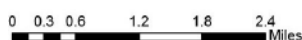
# Lewisham

## Type and quantity of public parks

**Borough area:** 3,532 hectares

**Publicly accessible parks:** 514 hectares

Lewisham is ranked as the 24th greenest out of the 33 London boroughs in terms of proportion of area under publicly accessible greenspace.



**FIGURE 1**

Publicly accessible greenspace in Lewisham

## Total value

**Total value:** £2.1billion

**Benefit-cost ratio:** 25

**Annual person value:** £393

**TABLE 1**

Value of public parks in Lambeth

ASSETS	PUBLIC SERVICES	HOUSEHOLD	BUSINESS	VALUE	%
Recreation		444		444	20
Mental health	43	110	62	215	10
Physical health	74	189	107	371	17
Property		1,188		1,188	53
Carbon				1	<1
Temperature		20		20	1
Value	117	1,951	170	2,238	100
	5%	87%	8%		

Note: All values are expressed in million £s



## Property

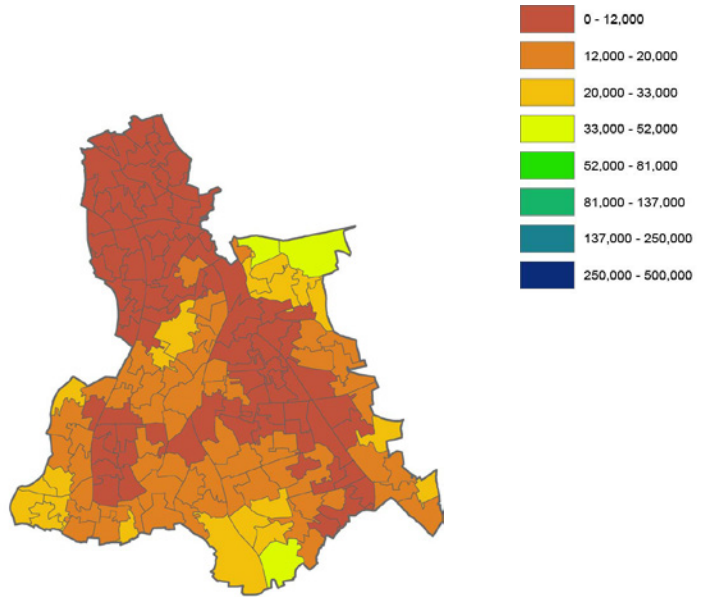
Total value: £1.2 billion

Value as proportion of property value: 3 per cent

Per household value: £10,230

Annual per person value: £272

0 0.3 0.6 1.2 1.8 2.4 Miles



**FIGURE 2**

Average amenity value revealed through property price per household in Lewisham (£)

## Health

### Mental health savings

Total value: £215 million

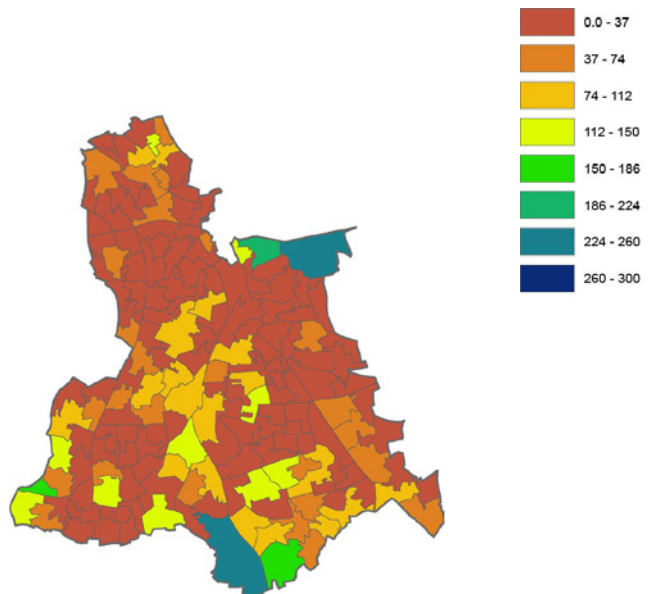
Annual person savings: £39

### Physical health savings

Total value: £371 million

Annual person savings: £68

0 0.3 0.6 1.2 1.8 2.4 Miles



**FIGURE 3**

Mental health expenditure savings per person in Lewisham (£)

## Other benefits

### Recreational benefits

Total value: £444 million

### Carbon storage

Total value: £0.81 million

### Temperature regulation

Total value: £20 million

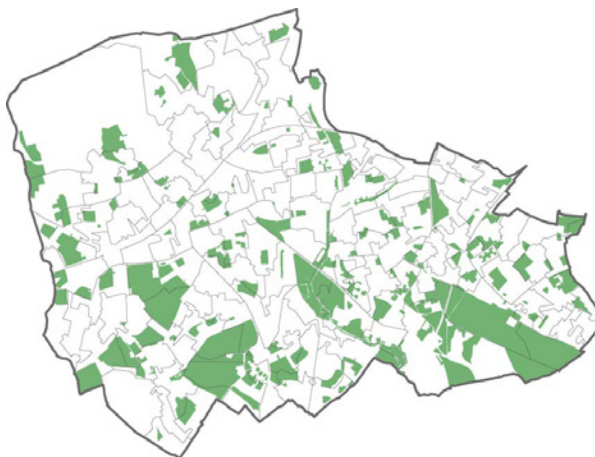
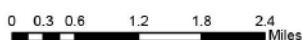
# Merton

## Type and quantity of public parks

**Borough area:** 3,762 hectares

**Publicly accessible parks:** 1,053 hectares

Merton is ranked as the 2nd greenest out of the 33 London boroughs in terms of proportion of area under publicly accessible greenspace.



**FIGURE 1**

Publicly accessible greenspace in Merton

## Total value

**Total value:** £2.5billion

**Benefit-cost ratio:** 31

**Annual person value:** £657

**TABLE 1**

Value of public parks in Merton

ASSETS	PUBLIC SERVICES	HOUSEHOLD	BUSINESS	VALUE	%
Recreation		453		453	18
Mental health	40	102	58	199	8
Physical health	53	135	77	265	10
Property		1,620		1,620	63
Carbon				5	<1
Temperature		14		14	1
Value	93	2,323	135	2,555	100
	4%	91%	5%		

Note: All values are expressed in million £s

## Property

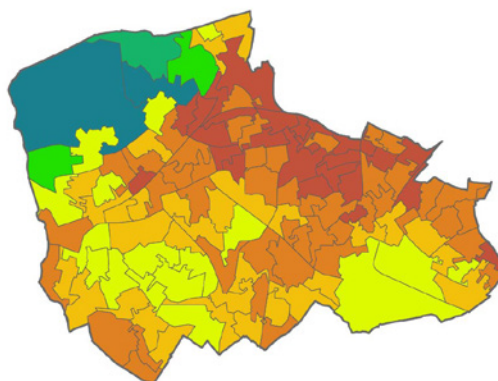
Total value: £1.6 billion

Value as proportion of property value: 4 per cent

Per household value: £20,566

Annual per person value: £493

0 0.3 0.6 1.2 1.8 2.4 Miles



**FIGURE 2**

Average amenity value revealed through property price per household in Merton (£)

## Health

### Mental health savings

Total value: £199 million

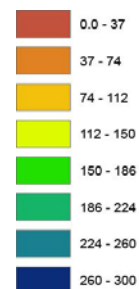
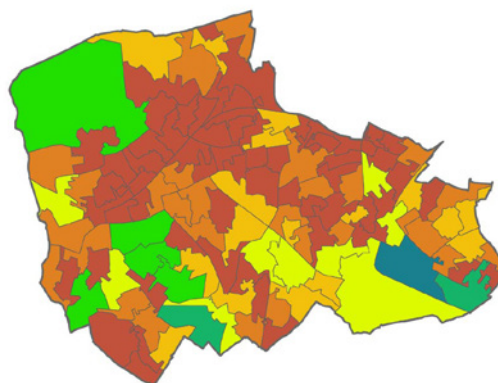
Annual person savings: £53

### Physical health savings

Total value: £265 million

Annual person savings: £70

0 0.3 0.6 1.2 1.8 2.4 Miles



**FIGURE 3**

Mental health expenditure savings per person in Merton (£)

## Other benefits

### Recreational benefits

Total value: £453 million

### Carbon storage

Total value: £4.74 million

### Temperature regulation

Total value: £14 million

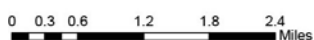
# Newham

## Type and quantity of public parks

**Borough area:** 3,858 hectares

**Publicly accessible parks:** 308 hectares

Newham is ranked as the 32nd greenest out of the 33 London boroughs in terms of proportion of area under publicly accessible greenspace.



**FIGURE 1**

Publicly accessible greenspace in Newham

## Total value

**Total value:** £1.5 billion

**Benefit-cost ratio:** 21

**Annual person value:** £247

**TABLE 1**

Value of public parks in Newham

ASSETS	PUBLIC SERVICES	HOUSEHOLD	BUSINESS	VALUE	%
Recreation		476		476	30
Mental health	31	78	45	154	10
Physical health	84	215	122	422	27
Property		511		511	32
Carbon				<1	<1
Temperature		23		23	1
Value	115	1,304	167	1,586	100
	7%	91%	11%		

Note: All values are expressed in million £s

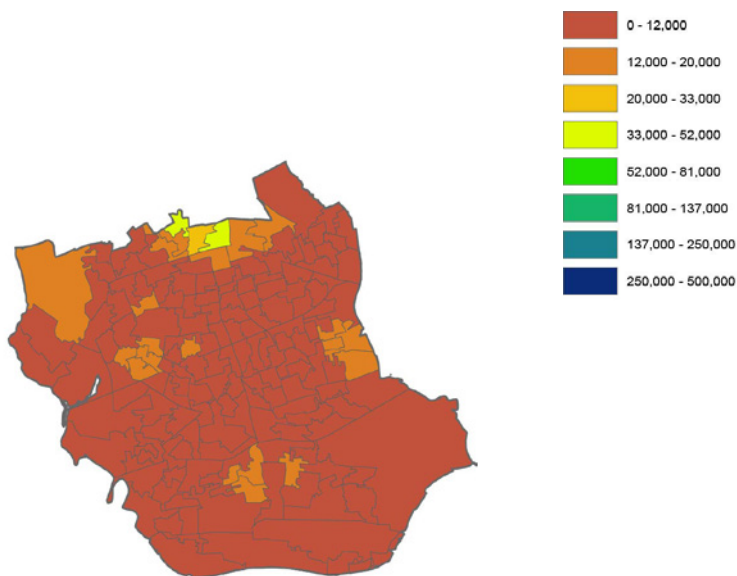
## Property

Total value: £511 million

Value as proportion of property value: 2 per cent

Per household value: £5,036

Annual per person value: £131



**FIGURE 2**

Average amenity value revealed through property price per household in Newham (£)

## Health

### Mental health savings

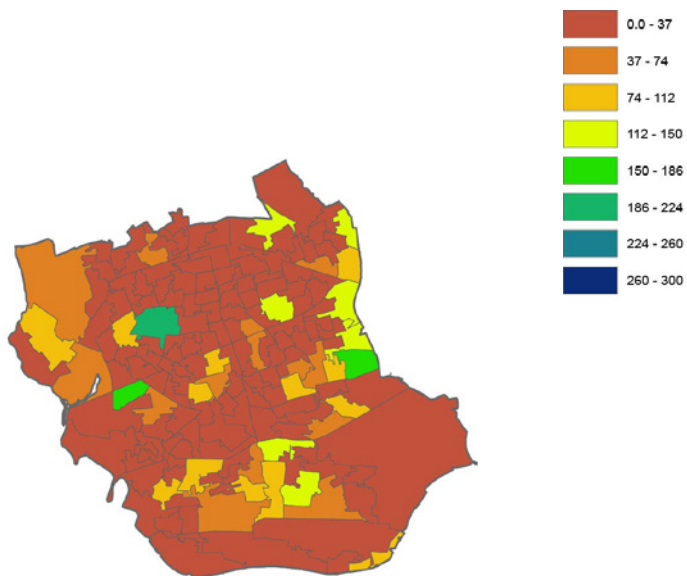
Total value: £154 million

Annual person savings: £25

### Physical health savings

Total value: £422 million

Annual person savings: £69



**FIGURE 3**

Mental health expenditure savings per person in Newham (£)

## Other benefits

### Recreational benefits

Total value: £476 million

### Carbon storage

Total value: £0.38 million

### Temperature regulation

Total value: £23 million

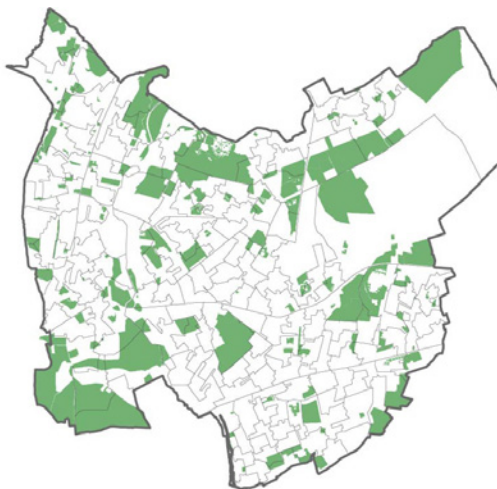
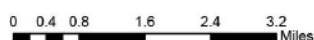
# Redbridge

## Type and quantity of public parks

**Borough area:** 5,644 hectares

**Publicly accessible parks:** 1,231 hectares

Redbridge is ranked as the 8th greenest out of the 33 London boroughs in terms of proportion of area under publicly accessible greenspace.



**FIGURE 1**

Publicly accessible greenspace in Redbridge

## Total value

**Total value:** £2.5 billion

**Benefit-cost ratio:** 29

**Annual person value:** £450

**TABLE 1**

Value of public parks in Redbridge

ASSETS	PUBLIC SERVICES	HOUSEHOLD	BUSINESS	VALUE	%
Recreation		514		514	20
Mental health	47	119	67	233	9
Physical health	75	192	109	376	15
Property		1,396		1,396	55
Carbon				5	<1
Temperature		20		20	1
Value	122	2,240	176	2,543	100
	5%	88%	7%		

Note: All values are expressed in million £s

## Property

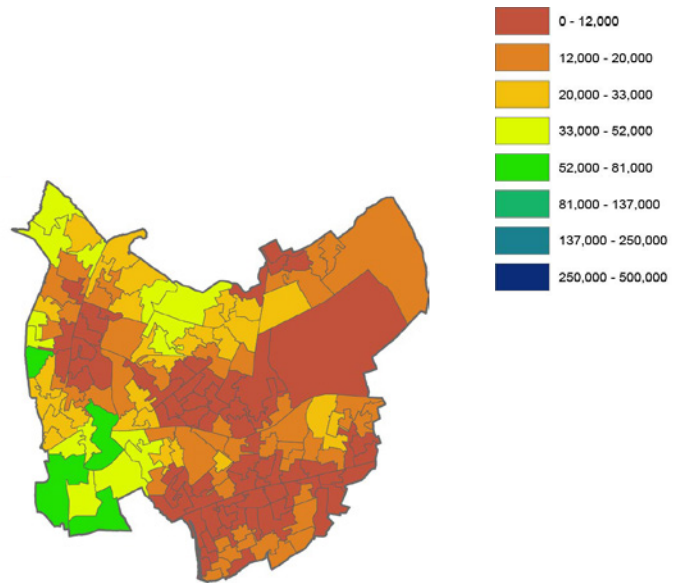
Total value: £1.4 billion

Value as proportion of property value: 4 per cent

Per household value: £14,081

Annual per person value: £313

0 0.4 0.8 1.6 2.4 3.2 Miles



**FIGURE 2**

Average amenity value revealed through property price per household in Redbridge (£)

## Health

### Mental health savings

Total value: £233 million

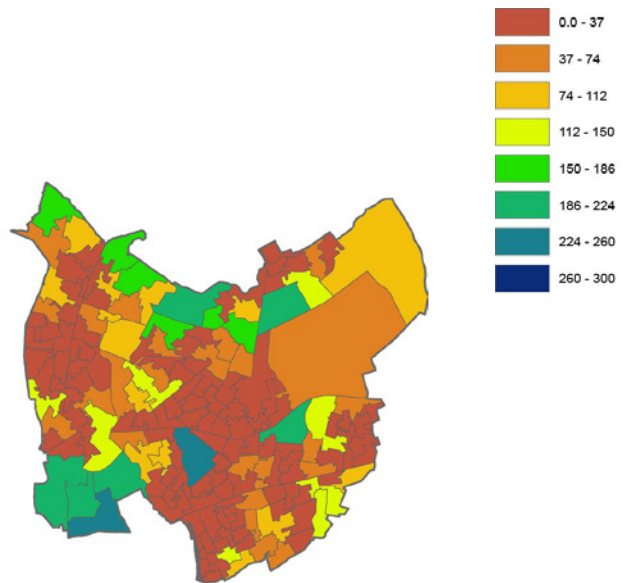
Annual person savings: £43

### Physical health savings

Total value: £376 million

Annual person savings: £69

0 0.4 0.8 1.6 2.4 3.2 Miles



**FIGURE 3**

Mental health expenditure savings per person in Redbridge (£)

## Other benefits

### Recreational benefits

Total value: £514 million

### Carbon storage

Total value: £4.53 million

### Temperature regulation

Total value: £20 million

# Richmond upon Thames

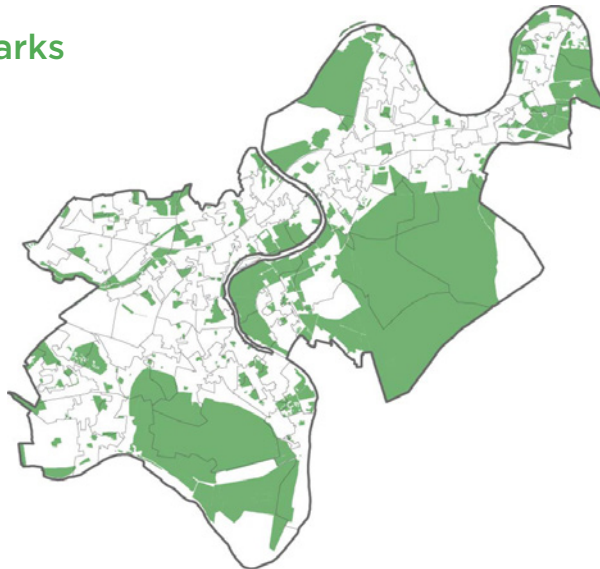
## Type and quantity of public parks

**Borough area:** 5,876 hectares

**Publicly accessible parks:** 2,371 hectares

Richmond upon Thames is ranked as the 1st greenest out of the 33 London boroughs in terms of proportion of area under publicly accessible greenspace.

0 0.4 0.8 1.6 2.4 3.2 Miles



**FIGURE 1**

Publicly accessible greenspace in Richmond upon Thames

## Total value

**Total value:** £4.8 billion

**Benefit-cost ratio:** 60

**Annual person value:** £1,351

**TABLE 1**

Value of public parks in Richmond upon Thames

ASSETS	PUBLIC SERVICES	HOUSEHOLD	BUSINESS	VALUE	%
Recreation		1,122		1,122	23
Mental health	47	119	68	234	5
Physical health	50	129	73	252	5
Property		3,294		3,294	67
Carbon				6	<1
Temperature		13		13	1
Value	97	4,677	141	4,922	100
	2%	95%	3%		

Note: All values are expressed in million £s



## Property

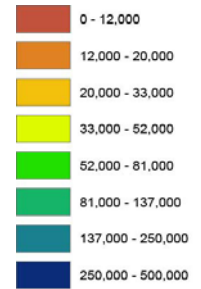
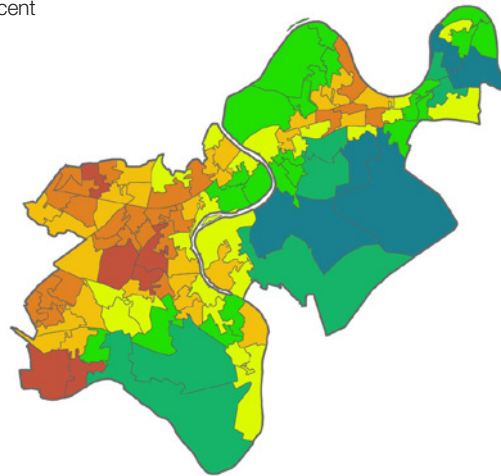
Total value: £3.3 billion

Value as proportion of property value: 6 per cent

Per household value: £41,261

Annual per person value: £989

0 0.4 0.8 1.6 2.4 3.2 Miles



**FIGURE 2**

Average amenity value revealed through property price per household in Richmond upon Thames (£)

## Health

### Mental health savings

Total value: £234 million

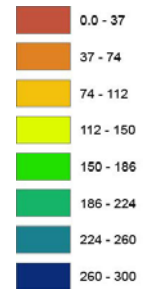
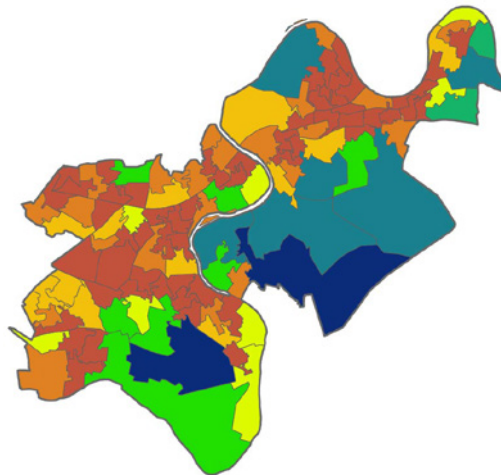
Annual person savings: £65

### Physical health savings

Total value: £252 million

Annual person savings: £70

0 0.4 0.8 1.6 2.4 3.2 Miles



**FIGURE 3**

Mental health expenditure savings per person in Richmond upon Thames (£)

## Other benefits

### Recreational benefits

Total value: £1122 million

### Carbon storage

Total value: £6.33 million

### Temperature regulation

Total value: £13 million

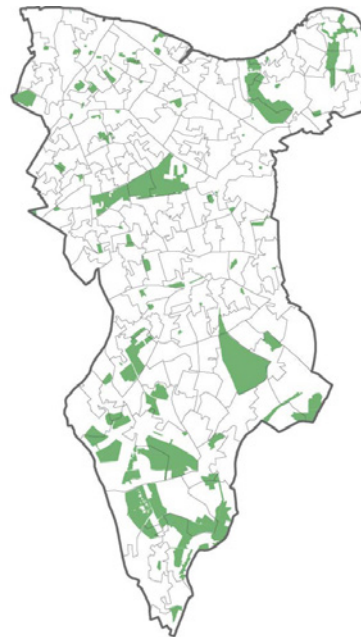
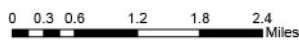
# Southwark

## Type and quantity of public parks

**Borough area:** 2,991 hectares

**Publicly accessible parks:** 353 hectares

Southwark is ranked as the 30th greenest out of the 33 London boroughs in terms of proportion of area under publicly accessible greenspace.



**FIGURE 1**  
Publicly accessible greenspace in Southwark

## Total value

**Total value:** £2.3 billion

**Benefit-cost ratio:** 19

**Annual person value:** £408

**TABLE 1**  
Value of public parks in Southwark

ASSETS	PUBLIC SERVICES	HOUSEHOLD	BUSINESS	VALUE	%
Recreation		732		732	30
Mental health	23	57	33	113	5
Physical health	74	189	107	370	15
Property		1,208		1,208	49
Carbon				2	<1
Temperature		21		21	1
Value	97	2,208	140	2,446	100
	4%	90%	6%		

Note: All values are expressed in million £s

## Property

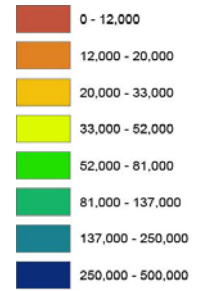
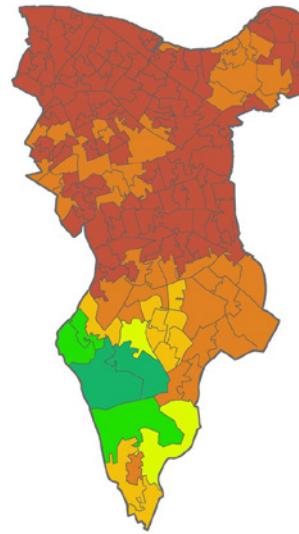
Total value: £1.2 billion

Value as proportion of property value: 2 per cent

Per household value: £10,035

Annual per person value: £256

0 0.3 0.6 1.2 1.8 2.4 Miles



**FIGURE 2**

Average amenity value revealed through property price per household in Southwark (£)

## Health

### Mental health savings

Total value: £113 million

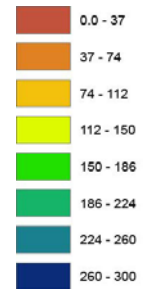
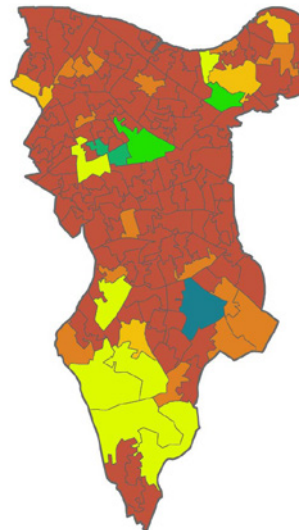
Annual person savings: £20

### Physical health savings

Total value: £370 million

Annual person savings: £65

0 0.3 0.6 1.2 1.8 2.4 Miles



**FIGURE 3**

Mental health expenditure savings per person in Southwark (£)

## Other benefits

### Recreational benefits

Total value: £732 million

### Carbon storage

Total value: £2.07 million

### Temperature regulation

Total value: £21 million

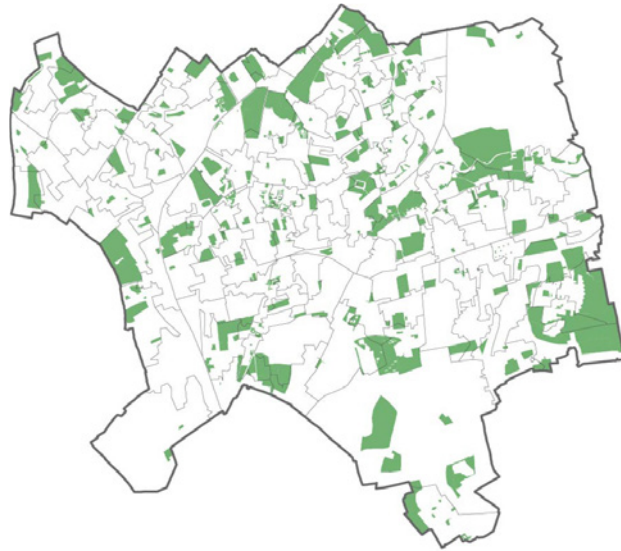
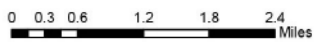
# Sutton

## Type and quantity of public parks

**Borough area:** 4,385 hectares

**Publicly accessible parks:** 708 hectares

Sutton is ranked as the 21st greenest out of the 33 London boroughs in terms of proportion of area under publicly accessible greenspace.



**FIGURE 1**  
Publicly accessible greenspace in Sutton

## Total value

**Total value:** £1.5 billion

**Benefit-cost ratio:** 19

**Annual person value:** £410

**TABLE 1**  
Value of public parks in Sutton

ASSETS	PUBLIC SERVICES	HOUSEHOLD	BUSINESS	VALUE	%
Recreation		363		732	23
Mental health	36	91	52	179	11
Physical health	51	130	74	255	16
Property		780		780	49
Carbon				2	<1
Temperature		14		14	1
Value	87	1,378	126	1,592	100
	5%	87%	8%		

Note: All values are expressed in million £s

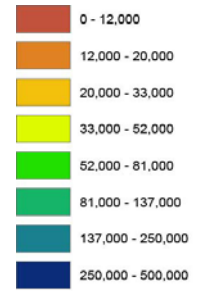
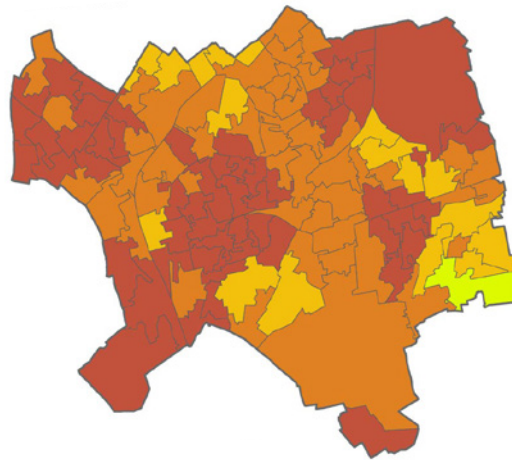
## Property

Total value: £780 million

Value as proportion of property value: 3 per cent

Per household value: £9,977

Annual per person value: £272



**FIGURE 2**

Average amenity value revealed through property price per household in Sutton (£)

## Health

### Mental health savings

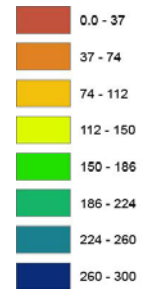
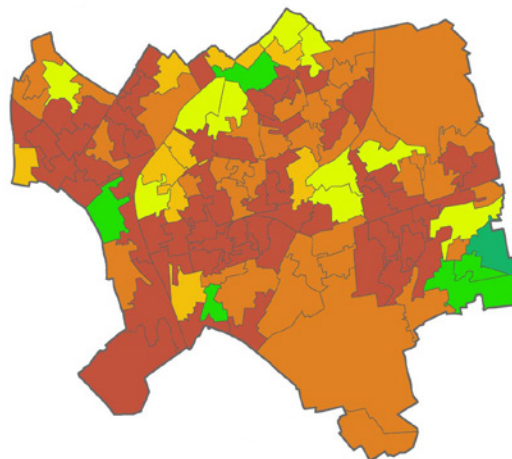
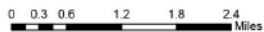
Total value: £179 million

Annual person savings: £49

### Physical health savings

Total value: £255 million

Annual person savings: £69



**FIGURE 3**

Mental health expenditure savings per person in Sutton (£)

## Other benefits

### Recreational benefits

Total value: £363 million

### Carbon storage

Total value: £1.89million

### Temperature regulation

Total value: £14 million

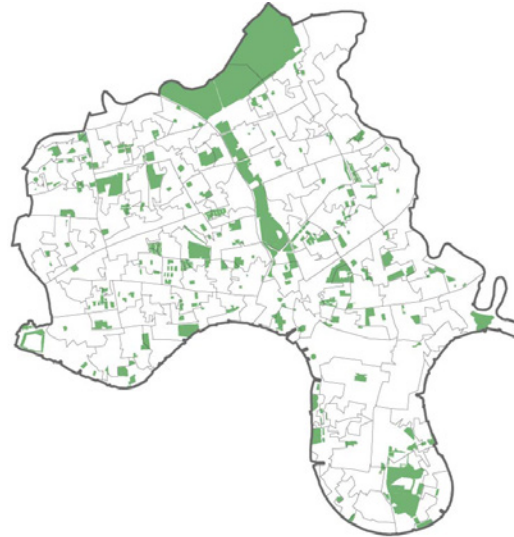
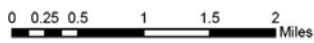
# Tower Hamlets

## Type and quantity of public parks

**Borough area:** 2,158 hectares

**Publicly accessible parks:** 258 hectares

Tower Hamlets is ranked as the 29th greenest out of the 33 London boroughs in terms of proportion of area under publicly accessible greenspace.



**FIGURE 1**  
Publicly accessible greenspace in Tower Hamlets

## Total value

**Total value:** £2.0 billion

**Benefit-cost ratio:** 18

**Annual person value:** £365

**TABLE 1**  
Value of public parks in Tower Hamlets

ASSETS	PUBLIC SERVICES	HOUSEHOLD	BUSINESS	VALUE	%
Recreation		639		639	30
Mental health	34	86	49	168	8
Physical health	76	195	111	382	18
Property		887		887	42
Carbon				<1	<1
Temperature		20		20	1
Value	110	1,827	159	2,096	100
	%	5	87	8	

Note: All values are expressed in million £s

## Property

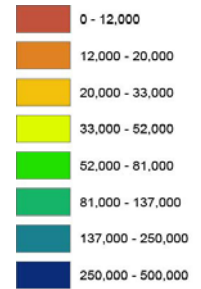
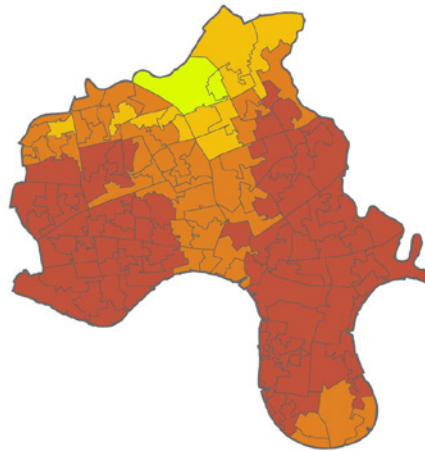
Total value: £887 million

Value as proportion of property value: 2 per cent

Per household value: £8,757

Annual per person value: £215

0 0.25 0.5 1 1.5 2 Miles



**FIGURE 2**

Average amenity value revealed through property price per household in Tower Hamlets (£)

## Health

### Mental health savings

Total value: £168 million

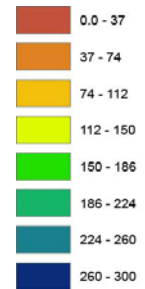
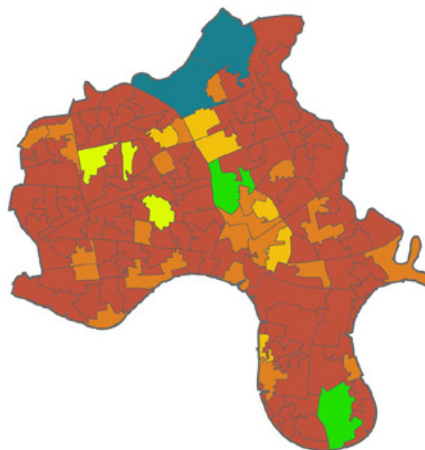
Annual person savings: £31

### Physical health savings

Total value: £382 million

Annual person savings: £70

0 0.25 0.5 1 1.5 2 Miles



**FIGURE 3**

Mental health expenditure savings per person in Tower Hamlets (£)

## Other benefits

### Recreational benefits

Total value: £639 million

### Carbon storage

Total value: £0.11 million

### Temperature regulation

Total value: £20 million

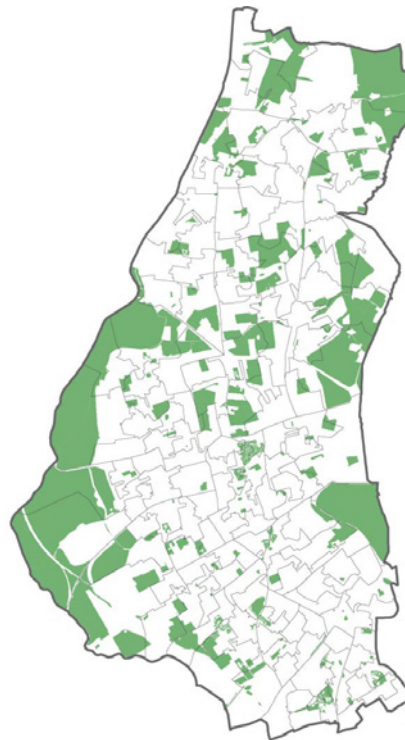
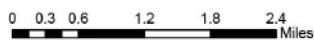
# Waltham Forest

## Type and quantity of public parks

**Borough area:** 3,881 hectares

**Publicly accessible parks:** 989 hectares

Waltham Forest is ranked as the 5th greenest out of the 33 London boroughs in terms of proportion of area under publicly accessible greenspace.



**FIGURE 1**  
Publicly accessible greenspace in Waltham Forest

## Total value

**Total value:** £2.4 billion

**Benefit-cost ratio:** 39

**Annual person value:** £485

**TABLE 1**  
Value of public parks in Waltham Forest

ASSETS	PUBLIC SERVICES	HOUSEHOLD	BUSINESS	VALUE	%
Recreation		390		390	16
Mental health	48	121	69	238	10
Physical health	70	179	102	351	14
Property		1,476		1,476	59
Carbon				9	<1
Temperature		19		19	1
Value	118	2,184	171	2,482	100
	5%	88%	7%		

Note: All values are expressed in million £s



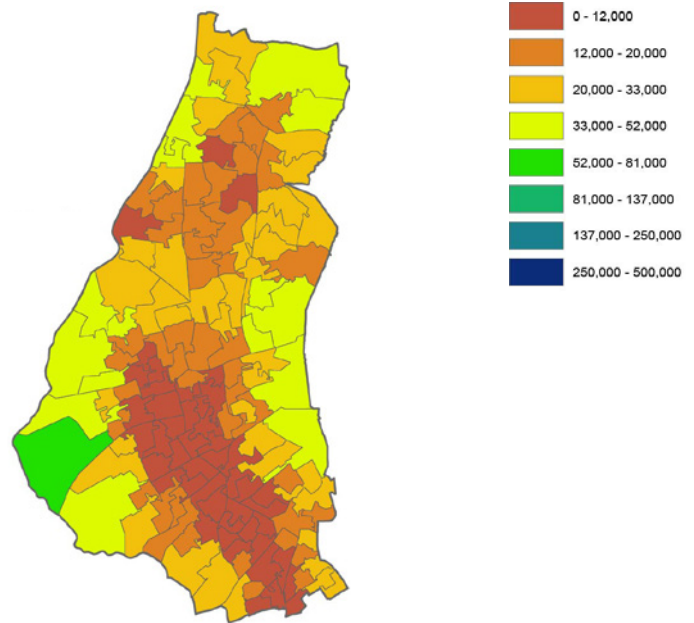
## Property

Total value: £1.5 billion

Value as proportion of property value: 4 per cent

Per household value: £15,234

Annual per person value: £356



**FIGURE 2**

Average amenity value revealed through property price per household in Waltham Forest (£)

## Health

### Mental health savings

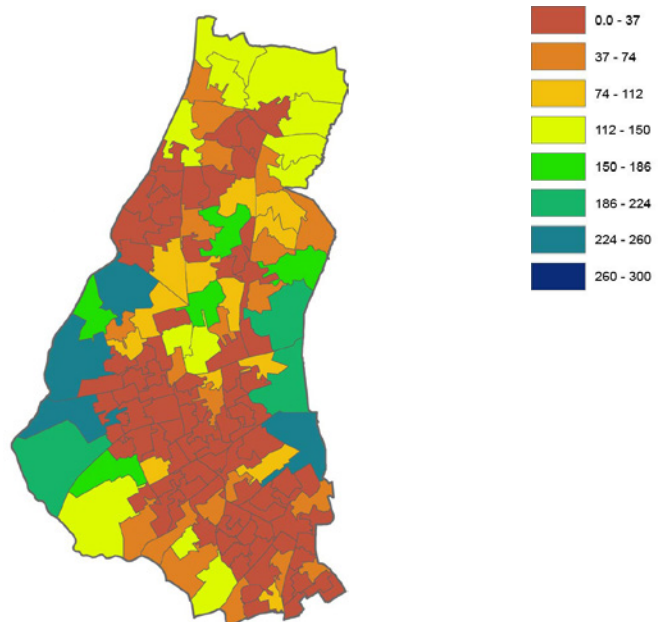
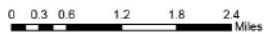
Total value: £238 million

Annual person savings: £48

### Physical health savings

Total value: £351 million

Annual person savings: £70



**FIGURE 3**

Mental health expenditure savings per person in Waltham Forest (£)

## Other benefits

### Recreational benefits

Total value: £390 million

### Carbon storage

Total value: £8.81 million

### Temperature regulation

Total value: £19 million

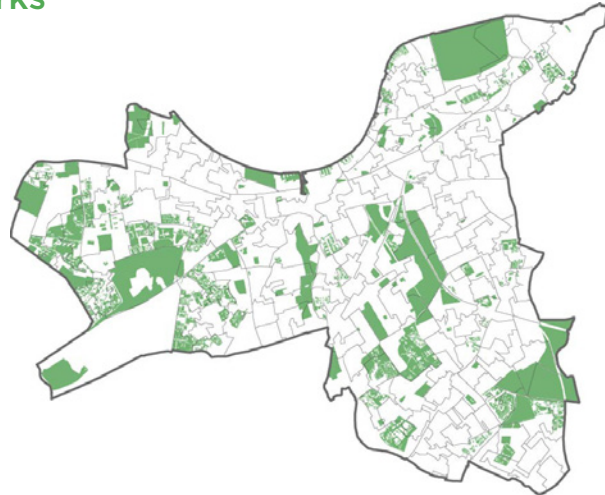
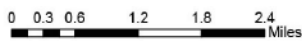
# Wandsworth

## Type and quantity of public parks

**Borough area:** 3,522 hectares

**Publicly accessible parks:** 686 hectares

Wandsworth is ranked as the 13th greenest out of the 33 London boroughs in terms of proportion of area under publicly accessible greenspace.



**FIGURE 1**  
Publicly accessible greenspace in Wandsworth

## Total value

**Total value:** £4.7 billion

**Benefit-cost ratio:** 49

**Annual person value:** £806

**TABLE 1**  
Value of public parks in Waltham Forest

ASSETS	PUBLIC SERVICES	HOUSEHOLD	BUSINESS	VALUE	%
Recreation		641		641	13
Mental health	13	146	83	287	6
Physical health	81	207	118	407	9
Property		3,397		3,397	71
Carbon				5	<1
Temperature		22		22	1
Value	139	4,413	201	4,758	100
	3%	93%	4%		

Note: All values are expressed in million £s

## Property

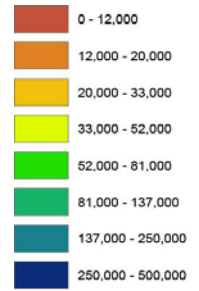
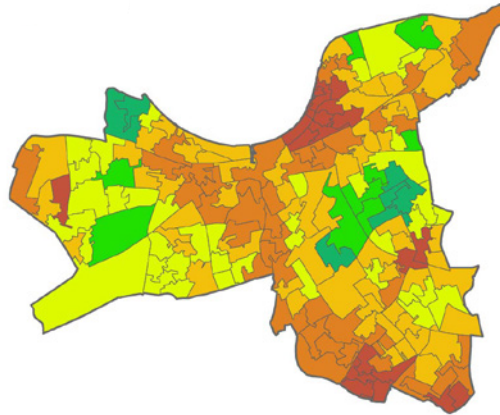
Total value: £3.4 billion

Value as proportion of property value: 4 per cent

Per household value: £26,029

Annual per person value: £648

0 0.3 0.6 1.2 1.8 2.4 Miles



**FIGURE 2**

Average amenity value revealed through property price per household in Wandsworth (£)

## Health

### Mental health savings

Total value: £287 million

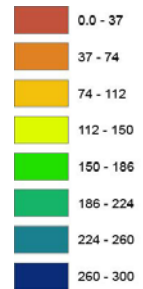
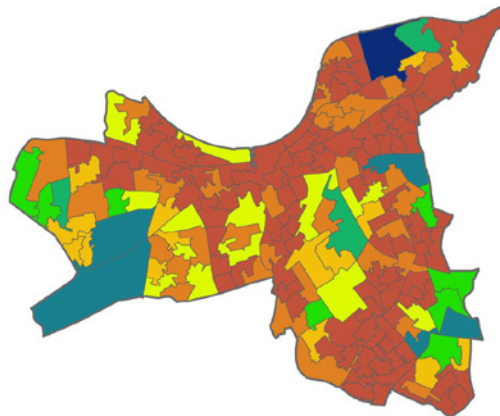
Annual person savings: £50

### Physical health savings

Total value: £407 million

Annual person savings: £70

0 0.3 0.6 1.2 1.8 2.4 Miles



**FIGURE 3**

Mental health expenditure savings per person in Wandsworth (£)

## Other benefits

### Recreational benefits

Total value: £641 million

### Carbon storage

Total value: £5.27 million

### Temperature regulation

Total value: £22 million

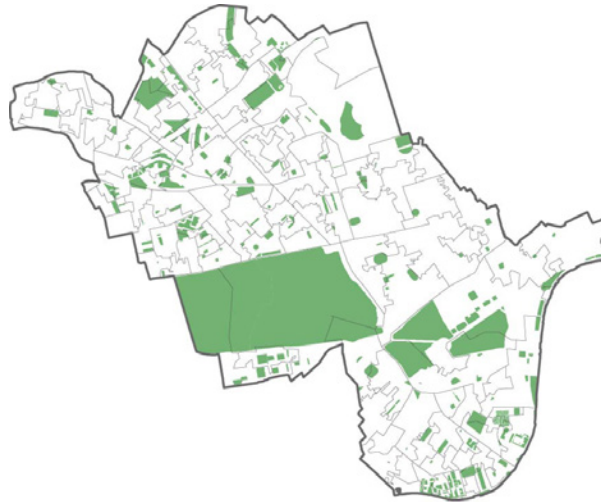
# Westminster

## Type and quantity of public parks

**Borough area:** 2,203 hectares

**Publicly accessible parks:** 429 hectares

Westminster is ranked as the 14th greenest out of the 33 London boroughs in terms of proportion of area under publicly accessible greenspace.



**FIGURE 1**  
Publicly accessible greenspace in Westminster

## Total value

**Total value:** £6.2 billion

**Benefit-cost ratio:** 102

**Annual person value:** £1,376

**TABLE 1**  
Value of public parks in Westminster

ASSETS	PUBLIC SERVICES	HOUSEHOLD	BUSINESS	VALUE	%
Recreation		790		790	13
Mental health	32	80	46	158	3
Physical health	63	160	91	314	5
Property		4,915		4,915	79
Carbon				<1	<1
Temperature		17		17	0
Value	94	5,962	137	6,193	100
	2%	96%	2%		

Note: All values are expressed in million £s

## Property

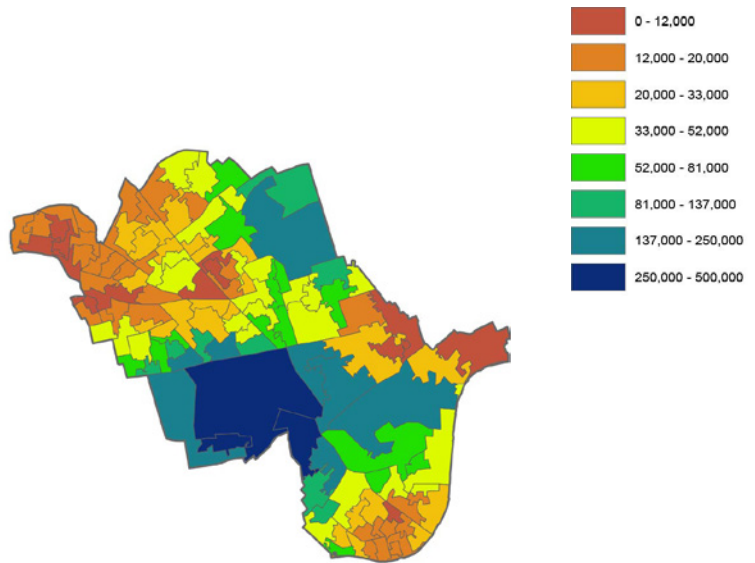
Total value: £4.9 billion

Value as proportion of property value: 5 per cent

Per household value: £46,466

Annual per person value: £1,157

0 0.25 0.5 1 1.5 2 Miles



**FIGURE 2**

Average amenity value revealed through property price per household in Westminster (£)

## Health

### Mental health savings

Total value: £158 million

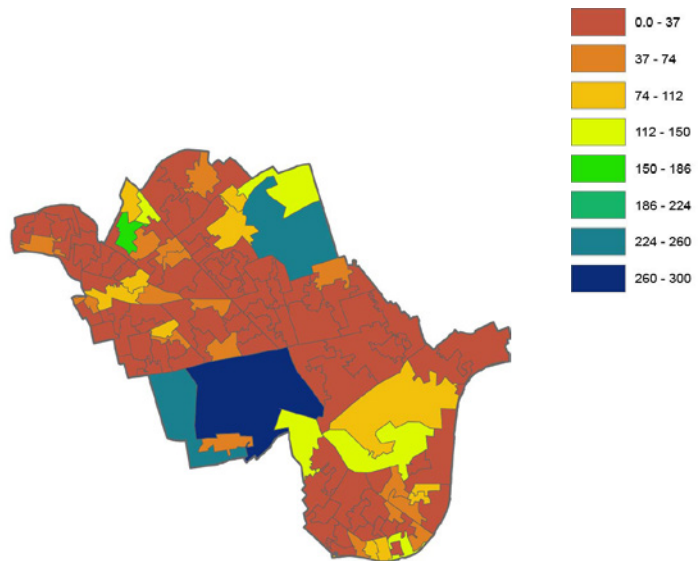
Annual person savings: £35

### Physical health savings

Total value: £314 million

Annual person savings: £70

0 0.25 0.5 1 1.5 2 Miles



**FIGURE 3**

Mental health expenditure savings per person in Westminster (£)

## Other benefits

### Recreational benefits

Total value: £790 million

### Carbon storage

Total value: £<1 million

### Temperature regulation

Total value: £17 million

---

**Contact us:**

Vivid Economics Limited  
26-28 Ely Place  
London EC1N 6TD  
United Kingdom

T: +44 (0)844 8000 254  
E: [enquiries@vivedeconomics.com](mailto:enquiries@vivedeconomics.com)

**Company Profile**

Vivid Economics is a leading strategic economics consultancy with global reach. We strive to create lasting value for our clients, both in government and the private sector, and for society at large.

We are a premier consultant in the policy-commerce interface and resource and environment-intensive sectors, where we advise on the most critical and complex policy and commercial questions facing clients around the world. The success we bring to our clients reflects a strong partnership culture, solid foundation of skills and analytical assets, and close cooperation with a large network of contacts across key organisations.

**:vivedeconomics**