

#HistoryOfMySchool

Putting our history on the map





Not every school necessarily has a long history.

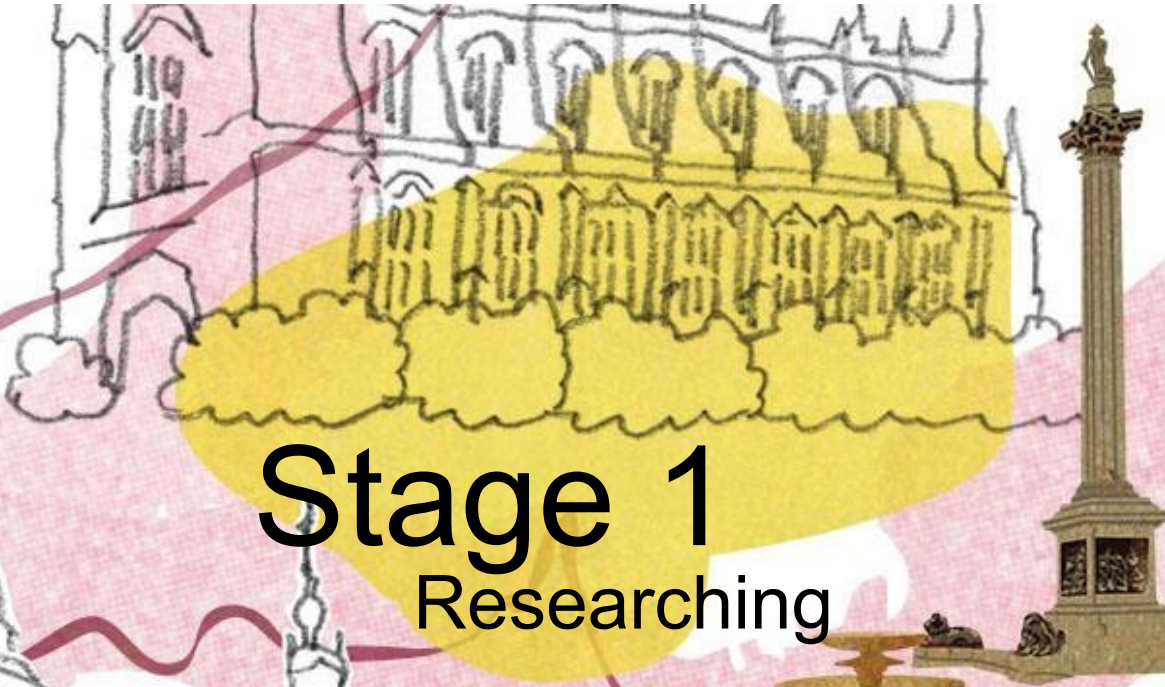
But every school has stories to tell.

What stories of our school do you want to tell?

We are going to be part of a **#HistoryOfMySchool** project for the **Layers of London** website. Layers of London is a free online resource that uses maps and content uploaded by people (like us) with historical stories to tell.

You'll have the chance to **research, edit, write** and **publish the history of our school online** for a public audience!

So, where do we start? The first stage is doing the research...



Stage 1

Researching



Use Maps

- You can use the maps in Layers of London to check whether our school features in historical maps. This [tutorial](#) will help you search Layers of London.
- Think about which maps would be most useful for gathering information.
- Make a note of which maps show information about our school – you may want to include this information in your online record later.

Ask yourself questions about our school:

- Find out when our school opened.
- Has it always been at this location?
- Have buildings changed, been added to, or demolished?
- Was our school hit by a bomb in WWII?
- Was it recorded as rich or poor on the Booth Poverty Map?
- Does the 1746 Rocque map show what the area was like before our school was built?

What other questions could you ask?

Use the school library

Our school may have information about its past in its library. Ask our librarian for information and dive into that.

What types of source material* do you think you will discover?

This may lead to discoveries of old photographs of the school, stories from the past and key milestones that can help build a timeline for our school.

**Some examples of source material: artefacts (e.g., objects, furniture, clothing etc.); literary material; records from organisations; photographs, films, videos or audio recordings; newspaper or magazine clippings; letters or diaries etc.*

Interview people

Sometimes the best information is inside people's heads!

Are there any teachers that have worked at the school for a long time that you can interview? Or maybe you could interview any adults that went to school here when they were younger? ***What type of questions would you ask?***

Use websites

- Does our school website have information about the history of the school?
- What other websites could you use to find out more information?
- Try searching for our school for any references on Wikipedia, newspaper articles, or local history societies.

Other resources to try:

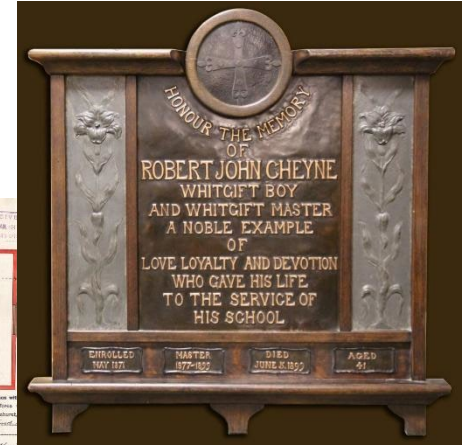
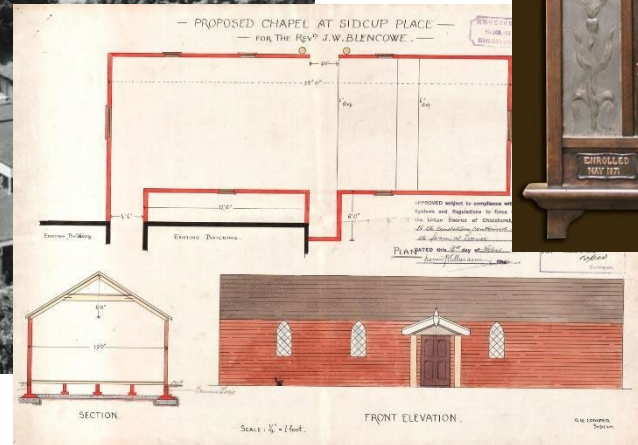
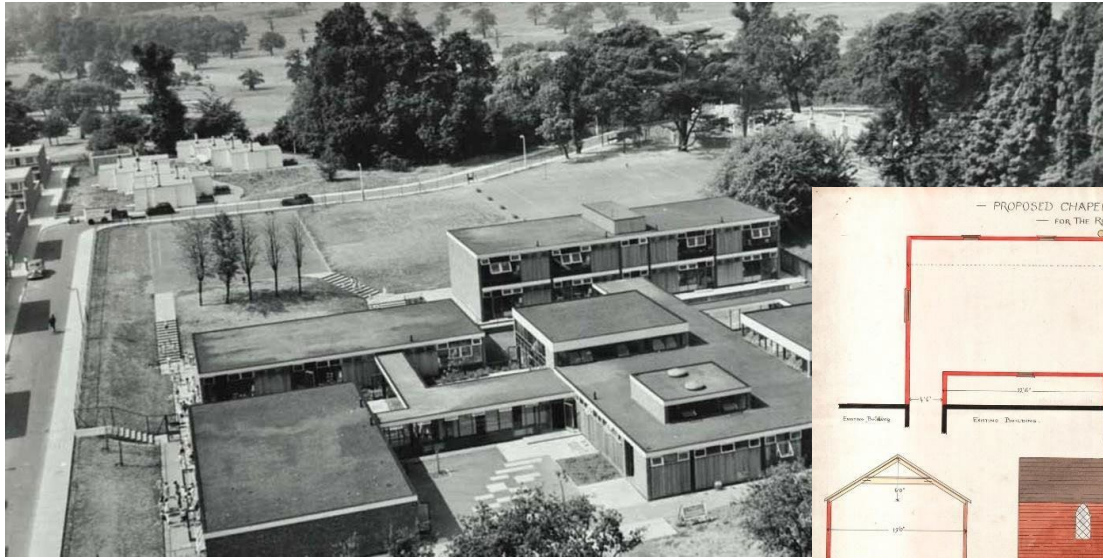
- YouTube (especially [British Pathé's](https://www.youtube.com/britishpathe) account: <https://www.youtube.com/britishpathe>)
- The [London Picture Archive](https://collage.cityoflondon.gov.uk/) (for images from across London <https://collage.cityoflondon.gov.uk/>)
- [Historic England](https://historicengland.org.uk/images-books/archive/) (images, drawings & written reports <https://historicengland.org.uk/images-books/archive/>)

Questions to consider:

- When was our school built?
- Who was the school's first head teacher?
- Why was it built?
- What did our school look like when it was first built?
- Has our school ever been rebuilt or had new buildings added to it?
- Has our school always been at its current location?
- Has our school uniform changed?
- Did anyone famous use to go to our school?
- Has anyone famous visited our school?
- What stories do people have about the school?
- What was at this location before our school was built?

Whilst researching...

Remember to keep notes of everything you find out - start to build a picture of the history of our school and the stories you want to share about it.





Stage 2

Editing your findings

What do you want to include in your Layers of London record?

You might not want to include everything you've found.

- ***Think about what makes a good record – what would you want to read about or see in a record about another school?***

What **key information** do you think you should include? You may find it useful to put together a timeline of key milestones in the school's history.

- ***Should you write one record or several records?***

You may find you have lots of information that can be separated into **different themes** or **different time periods**. You could post several records relating to our school or prefer to summarise the school's history into one record.

- ***In groups, discuss what should be included in your record/s and what should be left out.***

- ***Then get all the agreed content together so it's ready.***



Stages 3 & 4

Creating and publishing a record

Log in to your school's account, then open the map

The screenshot shows the top navigation bar of the Layers of London website. On the left is the logo, a stylized 'L' with a location pin, followed by the text 'Layers of London'. To the right of the logo are several menu items: 'Home', 'Learning', 'Get Involved', 'Help', 'About', and 'Contact us'. Further right is a button labeled 'Explore the map' with a location pin icon. To the far right is a user profile icon with the text 'Log in' and 'Sign up' below it. Two red arrows originate from the right side of the image: one points to the 'Log in' text, and the other points to the 'Explore the map' button. Below the navigation bar is a large, detailed historical map of a city area, showing streets, buildings, and parks. In the bottom left corner of the map area, there is a yellow rectangular overlay containing the text 'LAYERS OF LONDON' in small caps, followed by 'Explore our unique, historic map layers' in a larger, bold font.

Layers of London

Home Learning Get Involved Help About Contact us

Explore the map

Log in
Sign up

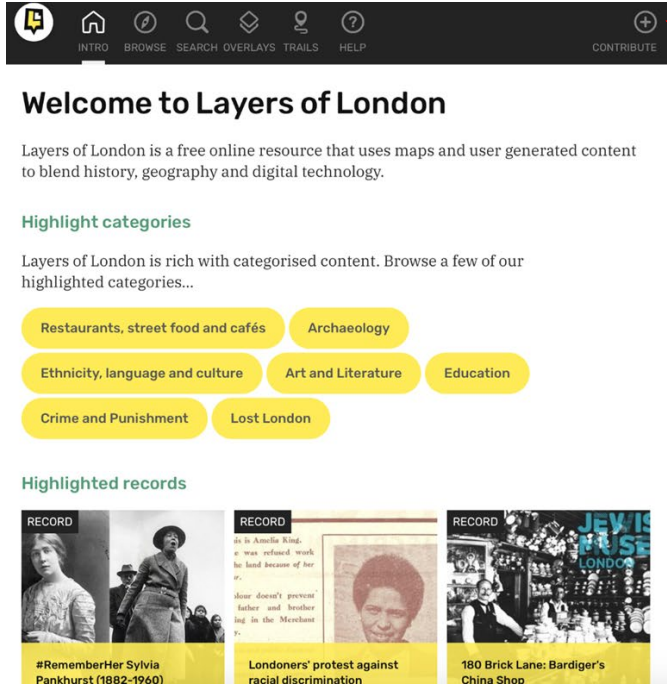
1. Log in

2. Click 'Explore the map'

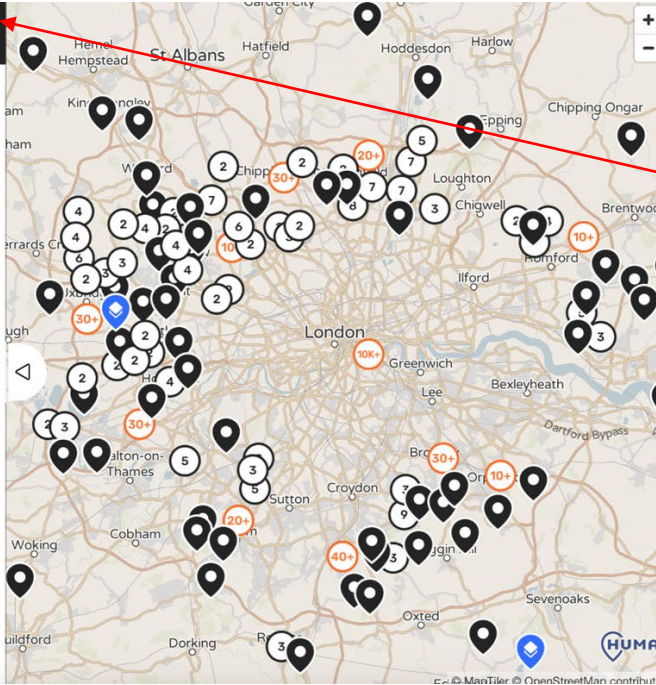
LAYERS OF LONDON

Explore our unique, historic map layers

Once the map is open



The screenshot shows the top navigation bar with icons for Home, Browse, Search, Overlays, Trails, Help, and a plus sign for Contribute. Below the navigation is a header "Welcome to Layers of London" followed by a brief description: "Layers of London is a free online resource that uses maps and user generated content to blend history, geography and digital technology." Underneath, there are "Highlight categories" listed in yellow buttons: Restaurants, street food and cafés; Archaeology; Ethnicity, language and culture; Art and Literature; Education; Crime and Punishment; and Lost London. At the bottom, there are "Highlighted records" with three examples: "#RememberHer Sylvia Pankhurst (1882-1960)", "Londoners' protest against racial discrimination", and "180 Brick Lane: Bardiger's China Shop".



Click on the circle with a plus sign to start creating a record

Either watch this [tutorial](#) on how to upload content, or follow slides 15-22.

Click **New Record** and on the next page click on **Begin**

Contribute [Your account](#) [Log out](#)

Create and manage your content here. You can share ownership of content with others by using **projects**.

Create a record
Add an event, story or place to the map.
[New record](#)

Create a collection
Gather a set of records together in a collection.
[New collection](#)

Create a project
Projects allow you to share ownership of content with other users.
[New project](#)

[See your public profile](#)


[Your favourites](#)

Click 'New record'

Pin your record to its location

Signed in successfully.

Where is your record located?



Latitude and longitude

Delete this record Save as draft & exit **Next**

Made with HUMAN

Use the map to set where you would like your record to be located.

All content needs a geographic location. This is normally where an event or story took place, or where a piece of information relates to.

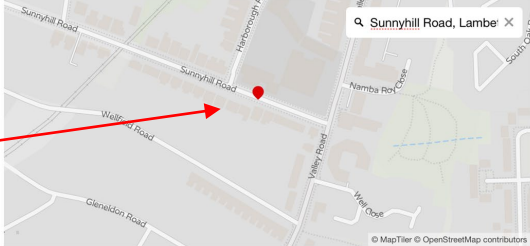
You can move the map around, and zoom in and out. You can also use the text search tool located in the top right of the map to help you find a place.

Type the location for your record in the search bar and press enter.

A red pin will appear on the map. You can drag it to the exact location for your record.

Signed in successfully.

Where is your record located?



Latitude and longitude

Delete this record Save as draft & exit **Next**

Made with HUMAN

Use the map to set where you would like your record to be located.

All content needs a geographic location. This is normally where an event or story took place, or where a piece of information relates to.

You can move the map around, and zoom in and out. You can also use the text search tool located in the top right of the map to help you find a place.

Add a name and information to your record

Name your record, and add any text content

Name

B *I* [🔗](#) **TT** **”** **☰** **☰** **☰** **☰** **☰** **☰** **↶** **↷**

Try to give your content a descriptive name - it'll be used when your record is shown in search results and on the map.

If your record is text-based, for example a written account or story, this is where to put it. It can be as long as you like.

Delete this record **Save as draft & exit** **Back** **Next**

Made with **HUMAP**

Type the name of your school here

Here, type the information or story you want to include in this record. You can format your text using the text box toolbar, if you want to make it easier to read and understand)

When you are happy with your record, click 'Next'

Add images or videos to your record

Would you like to add images and video?

Add video by URL

Add

Paste YouTube URLs here eg. <https://www.youtube.com/watch?v=dQw4w9WgXcQ>



You can add as many images and videos as you like to your record.

These items are shown in a media gallery, alongside their captions.

The 'main' image will be shown at the top of the tray when you open your record.

Delete this record

Save as draft & exit

Back

Next

Made with HUMAP

Add multiple images or videos by uploading them from your computer or adding the video's URL into the URL box and clicking 'Add'.

Include a caption.

Make sure you credit the person who took the picture and cite your sources (where you got the image from)

Would you like to add images and video?

Add video by URL

Add

Paste YouTube URLs here eg. <https://www.youtube.com/watch?v=dQw4w9WgXcQ>



Show additional fields



The tombstone of three famous Opera singers

Image © Jennifer Maple

Delete this record

Save as draft & exit

Back

Next

Made with HUMAP



You can add as many images and videos as you like to your record.

These items are shown in a media gallery, alongside their captions.

The 'main' image will be shown at the top of the tray when you open your record.

More details

Would you like to add a date?

Start date

Day Month Year

End date

Day Month Year

Next

Delete this record Save as draft & exit Back

Made with HUMAP



You can just enter the year, or year and month. An estimate is ok - an exact date is great!

Can you add an end date? Useful for events, and places that may no longer exist.

On the next page, if you have this information, add a date. Approximations are fine - if you don't have a date, that's OK (you don't need a date to submit your record - just click 'Next').

And on the next, you can add any links that you think are useful

Add links

Name

Url

Add another

Next

Delete this record Save as draft & exit Back

Made with HUMAP



Adding links is optional. If you want to add links to other sites on the internet, you can do so here.

The name will be displayed on the page, and when you click it it will take you to the URL.

Making it easier for people to find your record

Help people to find your record

Tag and categorise your record with the following options. This will help people find it in search results, and across the site.

Boroughs of London

Lambeth

Categories

Housing, Infrastructure and Environment Politics & government

Religion & worship Trade, Industry and commerce War & conflict

Education Written evidence Transport Visual/audio evidence

Crime and Punishment Leisure, sport and culture Gender, ethnicity and identity

Lost London Imagined or Future London Health and Welfare

Delete this record

Save as draft & exit

Back

Next

Made with HUMAP

Select the borough your record takes place in from the dropdown menu

And select any categories in yellow that might be relevant to your record

Cite the sources you have used

Add any credits or attribution

Attribution

<https://www.layersoflondon.org/records/34270/create/attribution>

<https://brookwoodcemetery.com>

https://en.wikipedia.org/wiki/Brookwood_Cemetery



If you have taken the content for this record from another source, then please be sure that you are permitted to do so.

Some sources may require you to give them credit, which you can do so here. This will be shown at the bottom of your record.

Finally include any sources you have used in your research - they will all be credited at the end of your record.

Delete this record

Save as draft & exit

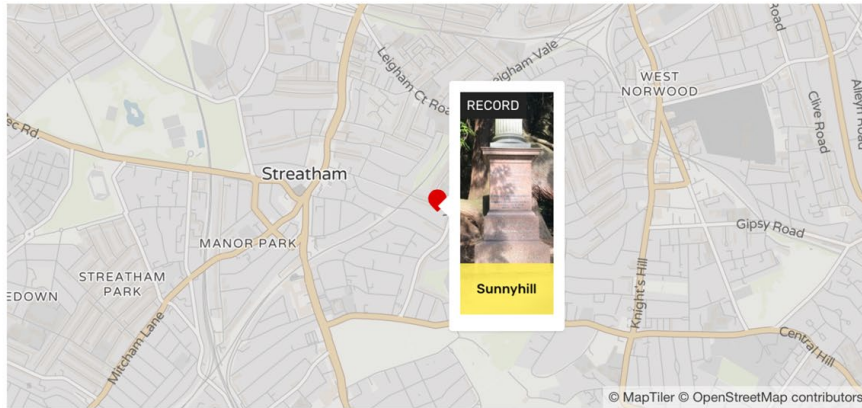
Back

Next

Made with 

Well done! Your record is ready for proofreading!

Done! Your record is ready.



Delete this record

Save as draft & exit

Back

Publish

Made with 

After your teacher has read through your record, publish it. You'll be able to see it live on the Layers of London website!

Once it's published, add your record to the public collection, '#HistoryOfMySchool'



Reflection

Talk about the following questions in pairs and then discuss as a class

1. What did you think of this project when you initially found out about it?
2. Did any of your first thoughts change when you started working on this project? If so, in what ways?
3. Did you find out anything surprising about your school?
4. Has doing these activities made you see your school and its history in a different way? If so, can you explain how?
5. What did you learn about doing historical research and presenting your findings?
6. What types of information and media sources did you find most interesting?
7. Overall, what would you say you've learned through doing these activities?