

MAYOR OF LONDON

VIRTUALLY EXPLORE

THE LONDON CURRICULUM

KEY STAGE 2



THE LONDON CURRICULUM

CONTEXT

The COVID-19 pandemic has presented an unprecedented challenge to schools. Whilst London's many learning venues and experiences have been physically closed, or are challenging to visit under restrictions, many provide first-class online alternatives which continue to bring London to life for students.

The London Curriculum is a flexible tool, that gives you control over what you teach, when and how. This document shows you how to adapt the KS2 London Curriculum resources to keep young Londoners connected to their incredible city.

London is now, and always will be, open for learning.



DISCOVER OUR KS2 UNITS

This resource makes it easy to adapt our five KS2 units when school trips aren't possible. Each unit has a broad range of cross-curricular content:

GOING UNDERGROUND

Going Underground lets your children take a peek beneath the busy streets of their city, to bring their learning to life.

Subjects covered: history, art & design, science, English

ILLUMINATING LONDON

Join Fen on his journey around some of the dazzling treasures that London has to offer - all themed around light!

Subjects covered: art & design, RE, science, history, English

CREATIVE LONDON

This resource explores some of the great cultural institutions in this remarkable part of London – the South Bank.

Subjects covered: maths, English, DT, music, art & design, computing, history, dance, PE

REBUILDING LONDON

Discover how London was rebuilt by world-class architects after World War Two and The Great Fire of London.

Subjects covered: dance, computing, geography, history, citizenship, English, DT, art & design

WILD ABOUT LONDON

Bring urban nature to life and connect your students with green spaces across the city!

Subjects covered: science, English, art & design, geography, citizenship, PE, maths, PSHE, DT

Download all these units for free at
[london.gov.uk/curriculum/KS2](https://www.london.gov.uk/curriculum/KS2)



HOW TO USE THIS RESOURCE

Each unit is organised into three steps:

DISCOVER Presenting and analysing background information relating to the given topic



EXPLORE Contextualise knowledge through a London-based visit



CONNECT Task-based activities to consolidate the above learning



This resource helps to adapt the **EXPLORE** step by providing online alternatives to school trips.

These adaptations provide your students opportunities to contextualise their learning from the **DISCOVER** activities. It also gives them the knowledge and inspiration they need to complete **CONNECT** tasks.

London Learning at Home

We also created a database listing free learning and cultural offers that children can access online. Search by subject, key stage and organisation to find what you need:

www.london.gov.uk/learning-at-home

NB. Most of the materials linked are free to access online. However, some of the workshops and experiences suggested may charge a small fee.



CONTENTS

GOING UNDERGROUND

| | |
|--------------------------------------------------|----|
| Underground Poetry | 6 |
| Art on the Underground | 8 |
| Underground Londinium | 9 |
| The Underground World of Crime and Punishment | 10 |
| Fossilised London | 11 |

ILLUMINATING LONDON

| | |
|--------------------------------|----|
| Lighting up London | 13 |
| The Sun and our Solar System | 14 |
| Spotlight on Victorian Theatre | 15 |
| Light and Growing | 16 |
| Light in Religious Festivals | 17 |

CREATIVE LONDON

| | |
|---------------------------|----|
| If Buildings Could Dance | 19 |
| Sounds Like South Bank | 20 |
| Fast Forward Through Film | 21 |
| Teams Behind the Scenes | 22 |

REBUILDING LONDON

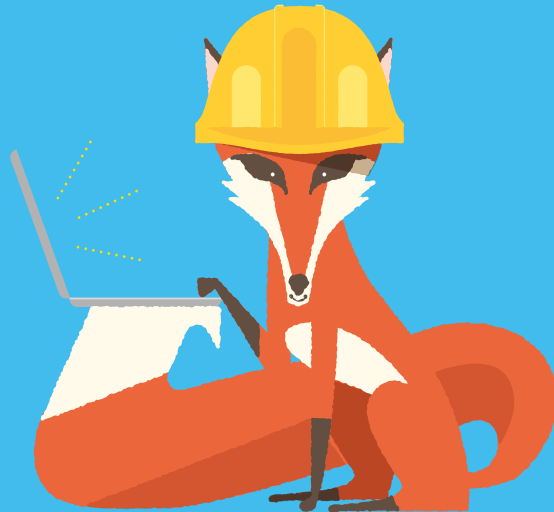
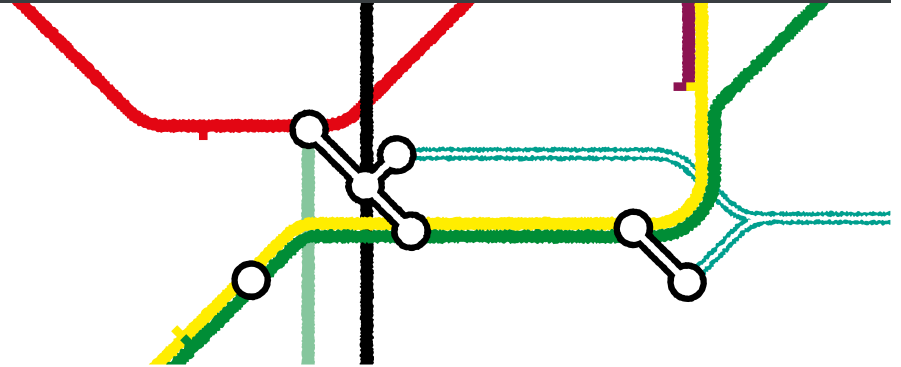
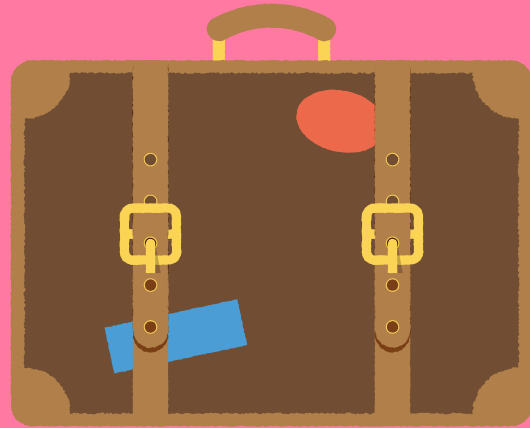
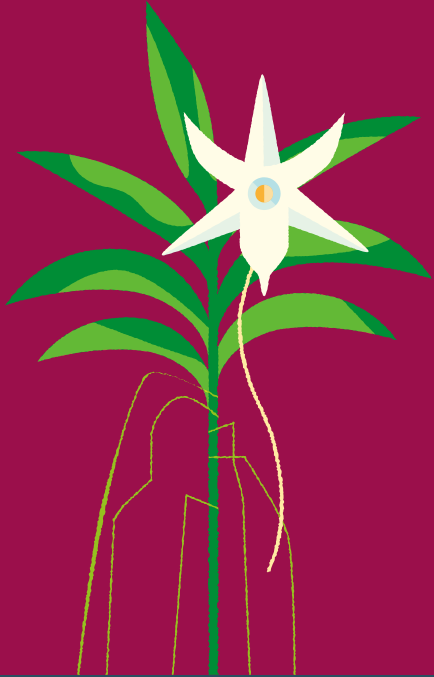
| | |
|--------------------------------------------|----|
| The Building Blocks of Dance: Hand Jive | 24 |
| Building Through Coding | 25 |
| World War II and The Great Fire | 26 |
| Observing and improving local buildings | 27 |
| Building a sustainable London | 28 |

WILD ABOUT LONDON

| | |
|-----------------------------|----|
| Plant protectors! | 30 |
| Waterways and wellbeing | 31 |
| Finding out using fieldwork | 32 |
| Love your local habitats | 33 |
| Planning the perfect park | 34 |

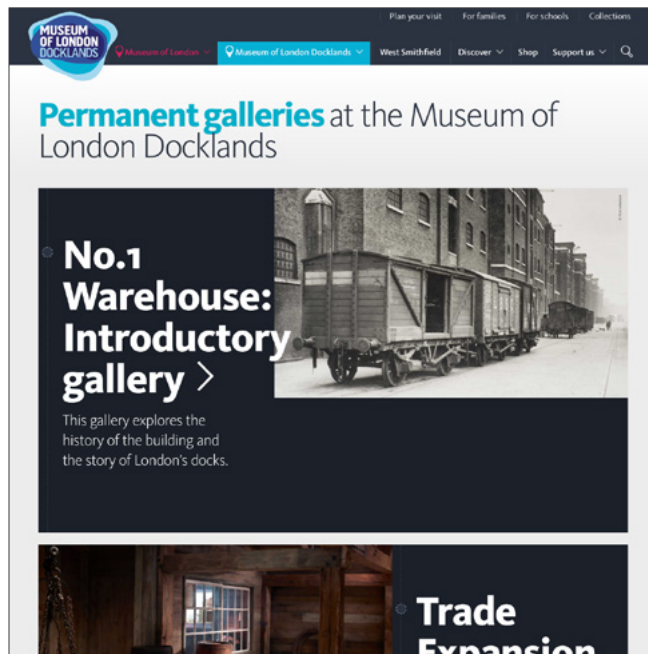
GOING UNDERGROUND

Download this unit at www.london.gov.uk/curriculum/KS2



UNDERGROUND POETRY

The following resources enable students to explore aspects of London migration in greater detail.



The Museum of London Docklands tells the story of the Port of London and the East End, and includes the London Sugar and Slavery gallery. The galleries support the study of trade, exploration and migration. Slideshows allowing you to explore key exhibits from each gallery are available at:

www.museumoflondon.org.uk/museum-london-docklands/permanent-galleries

NB. The Museum of London and Museum of London Docklands partnership are offering a range of online and live-streamed sessions as part of their schools programme. For the latest information, visit:

www.museumoflondon.org.uk/schools/interactive-sessions



The Migration Museum highlights how the movement of people to and from Britain has shaped who we are. Their website has an excellent resource bank:

www.migrationmuseum.org/resource-bank

They are also welcoming enquires regarding online workshops to info@migrationmuseum.org

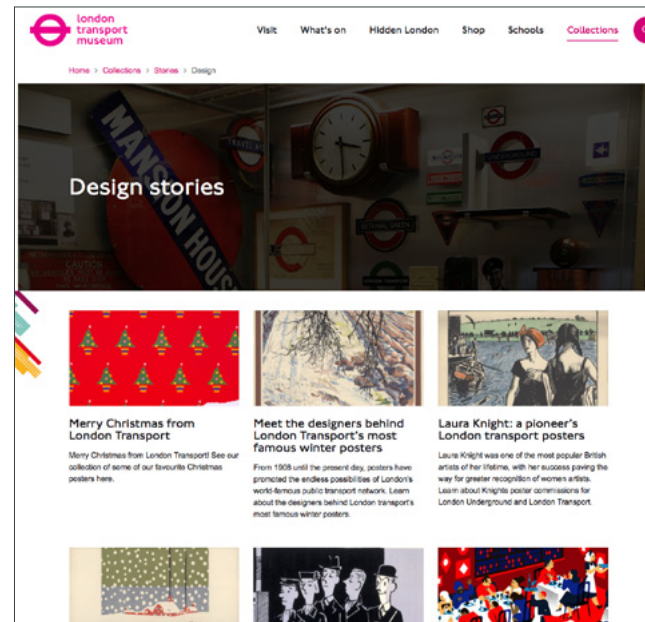
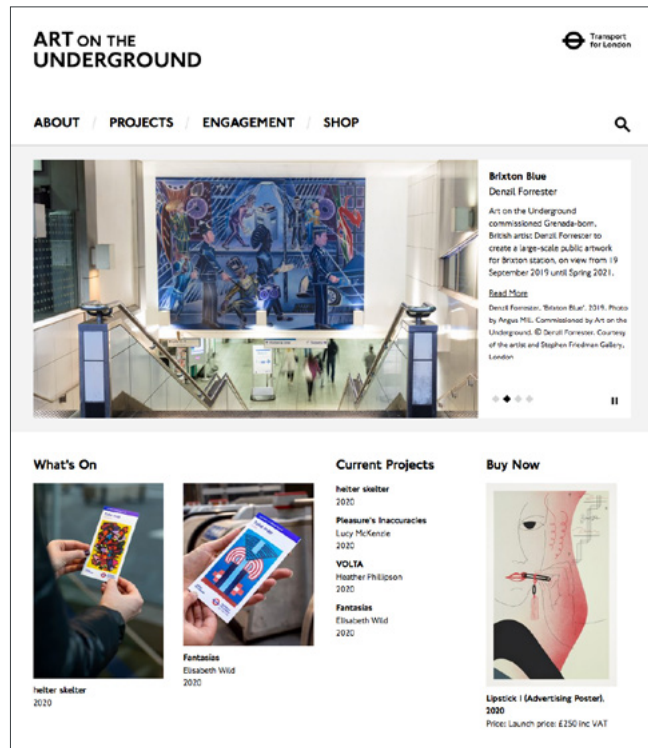
ART AND DESIGN ON THE UNDERGROUND

Use the following links to view more examples of art on the Underground:

Transport for London (TfL) collates all artwork commissioned or collected via projects. See it here: <https://art.tfl.gov.uk>

The **London Transport Museum** website has a design stories section. This has lots of information about iconic London Underground designs including the Tube map, transport posters and even the history of moquette. That's the carpet-style material used to upholster Tube seats!

www.ltmuseum.co.uk/collections/stories/design



UNDERGROUND LONDINIUM

The Museum of London's **Roman London gallery** has a collection of artefacts that show what it was like in Londinium. You can view them at:

www.museumoflondon.org.uk/london-wall/whats-on/galleries/roman-london



All Hallows by the Tower church is offering an incredible interactive online version of their popular Roman workshop, "Ultima Britannia". It is set in the London of 82AD in the spot where the church will one day stand. Participants become Londoners of the time. They then consider questions like designing decor for a new Roman house and when to rebel against those in power.

<https://ahbtt.org.uk/education/>

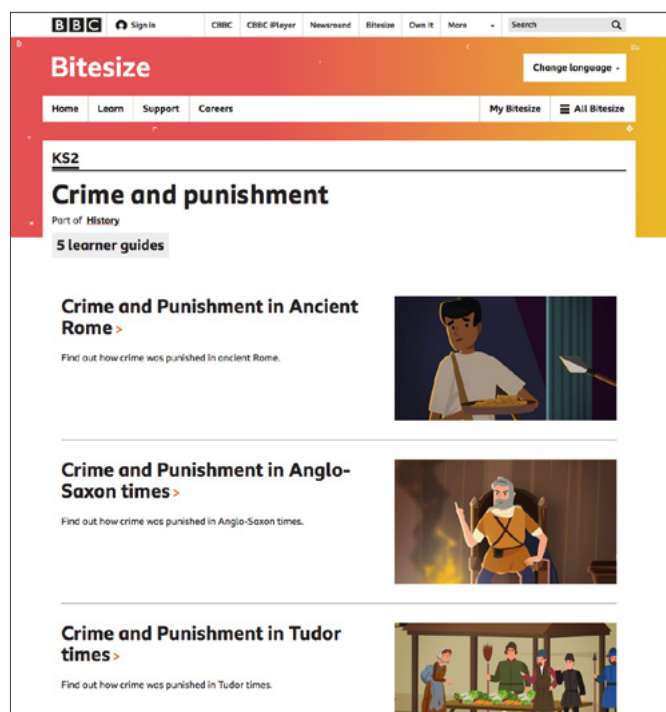
To find images of Roman remains around the capital, search online for **Guildhall amphitheatre**, **London Museum** and the **London Wall**. You can also search for **Billingsgate Roman House and Baths** which has downloadable KS2 activities here:

www.cityoflondon.gov.uk/things-to-do/attractions-museums-entertainment/visit-billingsgate-bathhouse

THE UNDERGROUND WORLD OF CRIME AND PUNISHMENT

Students should be encouraged here to build their existing knowledge about the history of crime and punishment.

Contact your local police station (www.met.police.uk/contact/find-a-police-station) to see if you can have an online Q&A with an officer or your school's PCSO.



Essex Police Museum

has curated an online gallery of high quality images and sound clips from their collection of police artefacts.

Find it at <http://gallery.nen.gov.uk/gallery2789-e2bn.html>

BBC bitesize has a range of videos and other resources about crime and punishment throughout history.

www.bbc.co.uk/bitesize/topics/z8w3n9q

In partnership with the **National Justice Museum**, a KS2 Victorian Study day based at the **Royal Courts of Justice** is still being offered online to learn about the history of law making in London. Visit:

www.nationaljusticemuseum.org.uk/onsitevisits/educational-visits-london/

The Supreme Courts in Parliament Square

is now offering tours via Microsoft Teams.

To enquire, please contact: enquiries@supremecourt.uk

Parliament UK offers online workshops for primary schools about the role of MPs, parliament and democracy within our society – book at:

<https://learning.parliament.uk/en/session-workshop/primary-secondary-school-online-workshop/>

FOSSILISED LONDON

The best way to explore this module is to give students a chance to handle fossils. However, there are lots of online opportunities to view **London's fossil collection**.

This video shows where many fossils are 'hidden' around London:

www.bbc.co.uk/news/av/science-environment-19574619

This blog from **Everything Dinosaur** explains where fossils can be found in some of London's landmarks, complete with images, including Waterloo Bridge, St. Paul's Cathedral and Guildhall:

https://blog.everythingdinosaur.co.uk/blog/_archives/2012/09/24/fossil-hunting-in-london.html



WATERLOO BRIDGE FOSSILS
©Everything Dinosaur

Using the **London Pavement Geology map** (<http://londonpavementgeology.co.uk/geo-sites>), students can zoom into London, or indeed your immediate locality, filter entries for "fossils" and find listings and photographs of fossils in situ.

The Natural History Museum website has one of the largest collections of plant and animal fossils.

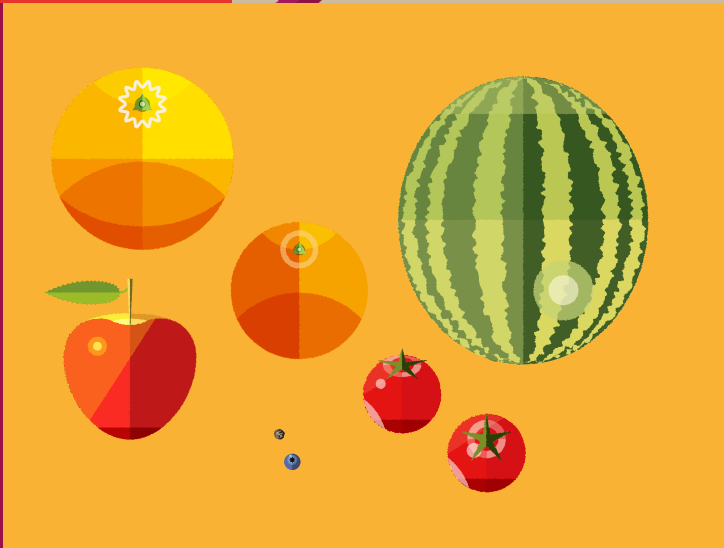
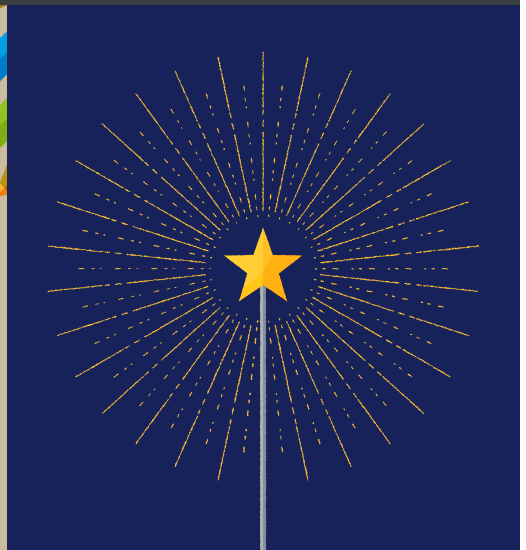
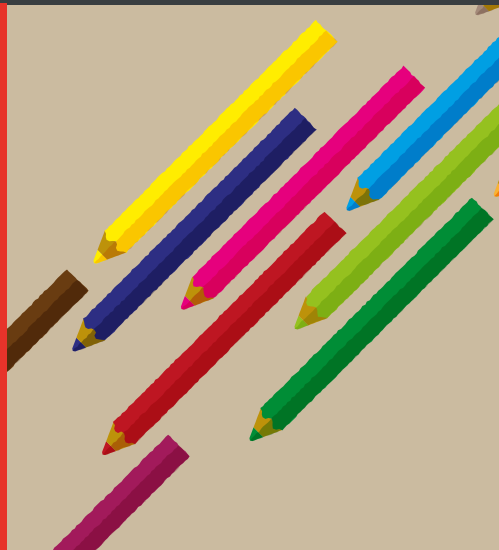
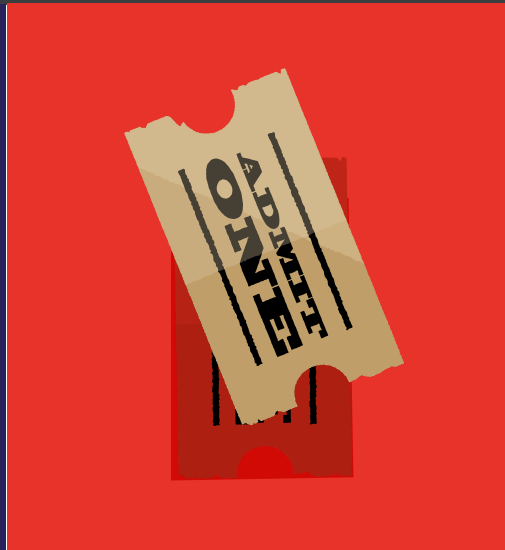
Try www.nhm.ac.uk/discover/fantastic-fossils.html for an overview, or their impressive 360 YouTube fossil hunt on the Jurassic coast www.nhm.ac.uk/discover/360-fossil-hunting-adventure.html

They have also produced the **Fossil Explorer** app, which is free to download for iOS and android devices. Find out more at:

www.nhm.ac.uk/take-part/identify-nature/fossil-explorer-app.html

ILLUMINATING LONDON

Download this unit at www.london.gov.uk/curriculum/KS2



LIGHTING UP LONDON

To take a closer look at some of London's light art, here are some links to recommended permanent installations:

James Glancy

www.jamesglancydesign.com/case-study/ganton-street

www.jamesglancydesign.com/case-study/plug-and-socket

Traffic Light Tree Pierre Vivant

https://en.wikipedia.org/wiki/Traffic_Light_Tree

Shaida Walking Julian Opie

<https://julianopie.com/sculpture/2015/shaida-walking>

IFO (Identified Flying Object)

Jacques Rival

www.kingscross.co.uk/IFO

Kings Cross Tunnel

www.thelightlab.com/project/kings-cross-tunnel/

Trinity Laban Conservatoire of Music and Dance

www.trinitylaban.ac.uk/about-us/visit-us/faculty-of-dance-guided-tours/
(including 360 online tour)

Spencer Finch

<http://www.spencerfinch.com/view/projects/162>

Breathing Jaume Plensa

<https://jaumeplensa.com/works-and-projects/public-space/breathing-2005>

Swarm Study / III Random International

www.random-international.com/swarm-study-iii-2011

Wavelength Rob and Nick Carter

www.robandnick.com/rn924-wavelength



THE TRAFFIC LIGHT TREE, SCULPTURE BY PIERRE VIVANT © Adrian Chandler

THE SUN AND OUR SOLAR SYSTEM

The following online resources from London institutions can help pupils learn more about the Sun and our Solar System.

The **Royal Observatory Greenwich** has a comprehensive online school offer, including digital planetarium workshops and more. Book at:

www.rmg.co.uk/schools-communities/schools/royal-observatory

Their resource bank has free lesson plans, activity ideas and videos:

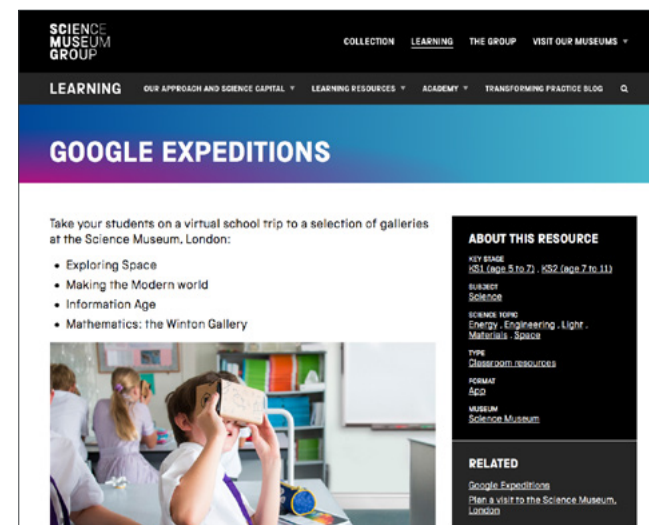
www.rmg.co.uk/schools-communities/learning-resources

Science Museum has teamed up with the Google Expeditions app to offer virtual tours around several galleries, including the Exploring Space exhibition. Visit:

<https://learning.sciencemuseumgroup.org.uk/resources/google-expeditions>
You'll find downloadable content in their learning resources menu.

Science Dome has a base in London and is offering a planetarium through a Zoom workshop and accompanying resources:

www.sciencedome.org.uk/2.html



SCIENCE MUSEUM GOOGLE EXPEDITIONS



SCIENCE DOME

© sciencediscoverydome

SPOTLIGHT ON VICTORIAN THEATRE

Many of London's famous theatres are streaming shows online to give pupils a flavour of the magic created by lighting design in live theatre.

The Shows Must Go On YouTube channel has clips and entire productions from London's West End available for streaming:

www.youtube.com/c/theshowsmustgoon

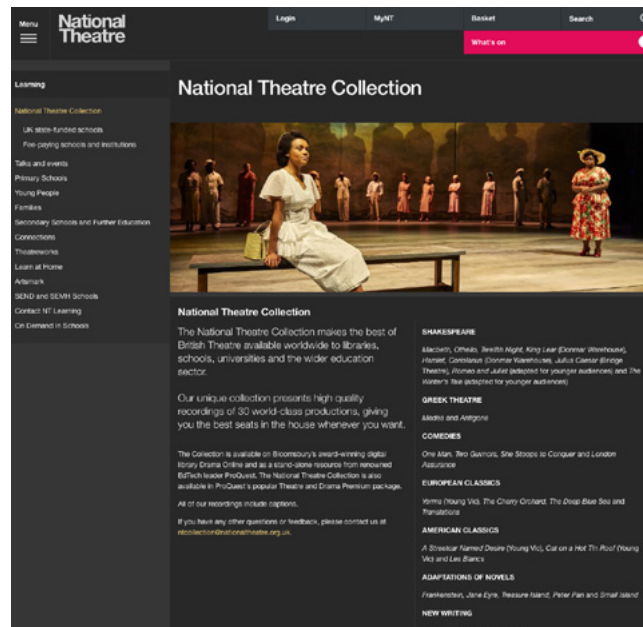
Unicorn Theatre specialise in productions for children. See their shows at: www.unicorntheatre.com/primary-schools

Polka Theatre is also now streaming shows from its *Fantastic Cardboard Cabinet of Stories*, a Victorian-style puppet theatre. See:

www.youtube.com/watch?v=aV76XDZGD3s

The **National Theatre** offers a library of recordings available free of charge for schools at:

www.nationaltheatre.org.uk/learning/national-theatre-collection



Similarly, in terms of Victorian origins, **Wilton's Musical Hall** website has videos and photographs of their unique space and productions:

<https://wilttons.org.uk>

The **V&A Museum of Childhood** is currently being refurbished. However, you can still see its collections, including toy theatres, at:

<https://collections.vam.ac.uk/> where further examples of toy theatres can be found.

LIGHT AND GROWING

Links to recommended urban growing projects around London:

Chelsea Physic Garden has a unique living collection of around 5,000 different edible, useful, medicinal and historical plants. View their immersive 'digital garden' collection at:

www.chelseaphysicgarden.co.uk/digital-garden

Growing Underground is the world's first subterranean farm, situated far below the busy streets of Clapham. To find out more, visit:

www.growing-underground.com

or watch

www.youtube.com/watch?v=Co1qpywMHNQ

Education charity **Global Generation** is continuing to develop urban growing and community garden projects across London. These include the King's Cross Skip Harden and the Story Garden at the British Library. You can find out more about their **Stay At Home Garden** project at:

www.globalgeneration.org.uk/

London's wealth of **city farms** also house community allotments growing a wide range of produce.

Some examples with thriving growing projects can be found at:

www.spitalfieldscityfarm.org/gardens,

<https://hackneycityfarm.co.uk/about/garden>

<http://stepneycityfarm.org/about-the-farm/growing>



CHELSEA PHYSIC GARDEN
© 1995 – 2016 LondonTown.com



GROWING UNDERGROUND

LIGHT IN RELIGIOUS FESTIVALS

Consult your local council's directory or SACRE document to find contacts to help you investigate light's importance in different religions. Many places of worship also offer online tours or photography galleries.

To learn more specifically about Hanukkah, London's **Jewish Museum** is offering a range of digital workshops for schools:

<https://jewishmuseum.org.uk/virtual-classrooms/>

Example videos showing celebrations of religious festivals of light in London:

Diwali at Neasden Temple
(BBC news):

[www.youtube.com/
watch?v=6rSv9OzVxhg](https://www.youtube.com/watch?v=6rSv9OzVxhg)

Diwali in Trafalgar Square
(Mayor of London):

[www.youtube.com/
watch?v=Hlt77tFhyjU&feature=emb_ logo](https://www.youtube.com/watch?v=Hlt77tFhyjU&feature=emb_logo)

Hanukkah celebrations in Trafalgar Square (Diverse London):

[www.youtube.com/
watch?v=og_9rjPsMPI](https://www.youtube.com/watch?v=og_9rjPsMPI)



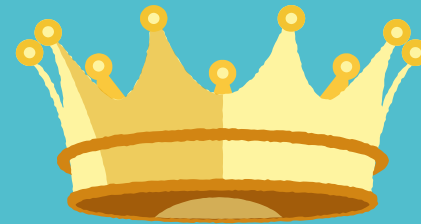
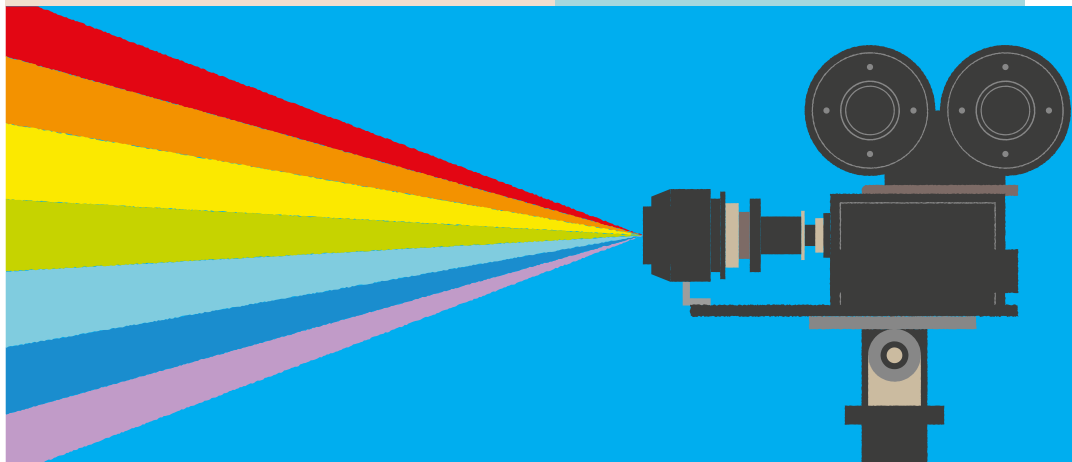
DIWALI ON TRAFALGAR SQUARE
© Urbanasian.com



HANUKKAH ON TRAFALGAR SQUARE
© Kois Miah

CREATIVE LONDON

Download this unit at www.london.gov.uk/curriculum/KS2



IF BUILDINGS COULD DANCE

This unit was written with the aim of getting out and seeing the South Bank's distinctive architecture first hand. However, you can still access this from the classroom.

Using the area suggested in activity 2 (p83), Google's street view function allows students to virtually tour the site.

Your starting point could be **Upper Ground** or **Belvedere Road**, both **SE1**.

Learn how to use street view at: <http://bit.ly/usestreetview>

For more specific architectural information and photography of **Rambert** and its neighbouring cultural institutions, follow the links below which complement the factsheets already included in the learning pack on p18-21:

www.rambert.org.uk/about-us/our-building/

[Southbank Centre](https://www.archdaily.com/tag/southbank-centre)
<https://www.archdaily.com/tag/southbank-centre>

[British Film Institute](http://www.dezeen.com/2019/05/13/bfi-southbank-british-film-institute-london-carmody-groarke/)
www.dezeen.com/2019/05/13/bfi-southbank-british-film-institute-london-carmody-groarke/

[Royal National Theatre](http://www.archdaily.com/772979/ad-classics-royal-national-theatre-denys-lasdun)
www.archdaily.com/772979/ad-classics-royal-national-theatre-denys-lasdun

[Rambert Home Studio](http://www.rambert.org.uk/join-in/rambert-home-studio), an on-demand selection of dance classes is free to view. For more information and to sign up for your school, visit **www.rambert.org.uk/join-in/rambert-home-studio** and go to the children and young people section for appropriate content.



RAMBERT BUILDING.
© Nick Guttridge

SOUNDS LIKE THE SOUTHBANK

It's easy to find photos of **Southbank Centre**'s iconic buildings online. This link shows a video tour made by young people:

[www.youtube.com/
watch?v=eSrYLk5P7YQ](https://www.youtube.com/watch?v=eSrYLk5P7YQ)

Southbank Centre's YouTube channel has videos of current exhibitions and past performances. These help give students a flavour of the rich cultural diversity on display in its buildings:

[www.youtube.com/user/
SouthbankCentre](https://www.youtube.com/user/SouthbankCentre)

You could use soundbites from these videos to create the suggested Soundscapes in this unit's Connect activities. Alternatively you could choose different locations from around your school by adapting the *Scavenger hunt activity* from pages 34-37.



FAST FORWARD THROUGH FILM

You can watch the two suggested films at the [BFI Southbank Mediateque](#) via the following links:

Southbank (1964)

www.youtube.com/watch?v=yyQLA_hFfb4&feature=emb_title

Borderline, Alex Chandon (2005)

www.youtube.com/watch?v=N7HX28TugSw

BFI also host an incredible archive of film online through [BFI player](#). More information can be found here:

<https://player.bfi.org.uk>



Photography © BFI

TEAMS BEHIND THE SCENES

The following link contains an excellent tour around the **National Theatre**, including backstage areas. This is an ideal accompaniment to the *Connect* activities in this learning pack:

www.youtube.com/watch?v=oBV8pqN4MFs



REBUILDING LONDON

Download this unit at www.london.gov.uk/curriculum/KS2



THE BUILDING BLOCKS OF DANCE: HAND JIVE

A good place to start exploring London's dance scene virtually is by researching some of the city's incredible dance companies.

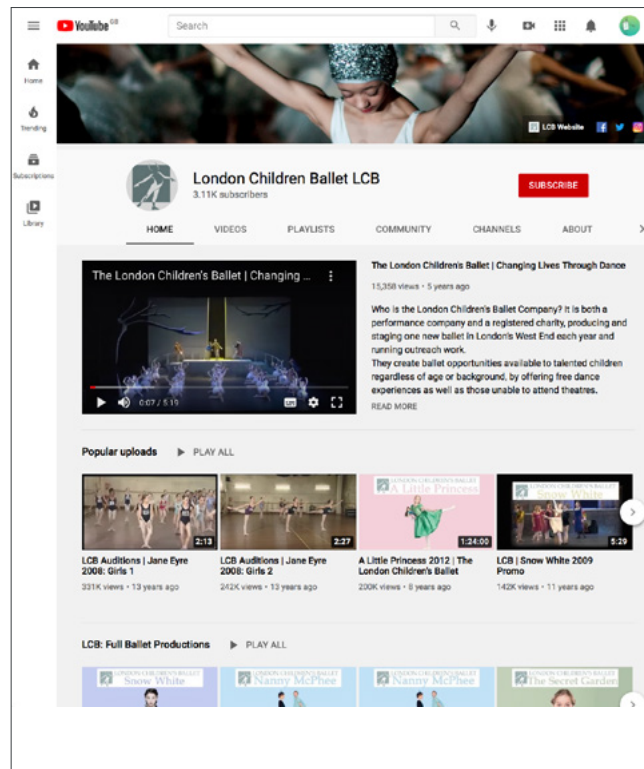
The following websites are all great options, with links to inspiring performances.

London Children's Ballet
www.youtube.com/user/LCBallet

ZooNation
<https://zoonation.co.uk>

Ballet Boyz
<https://www.balletboyz.com/stage>

Akram Kahn
www.akramkhancompany.net



For even more innovative dance content, look no further than the **Sadler's Wells Theatre YouTube channel**, found here: www.youtube.com/channel/UCA9CPXDU8Pnp2f9kQG8TX8w



To see how dance has changed over time in London, see the following which shows **Jitterbug dancing in the 1940's**: <http://bit.ly/jitterbug1940s>

BUILDING THROUGH CODING

The Institute of Imagination is planning new **RE:CODE London** sessions around air pollution. These will use pre-packed LEGO WeDo kits to build an electric car. Teachers will get training before the event. On the day, they'll work with the RE:CODE team who will broadcast into schools to help students design, engineer and code.

Keep up to date at:

<https://ioi.london/whats-on/>



**institute of
imagination**

WORLD WAR II AND THE GREAT FIRE

The **Barbican Centre** is an excellent example of post-war building in London. Watch this virtual tour of its venues at:

www.youtube.com/watch?v=F05Pe2LLkyc



BARBICAN CENTRE
Linda Hartley 2010, Flickr

– or watch this short news article about its origins:

www.youtube.com/watch?v=RncC8_DQGMk

More information about the site can be found here: www.barbican.org.uk

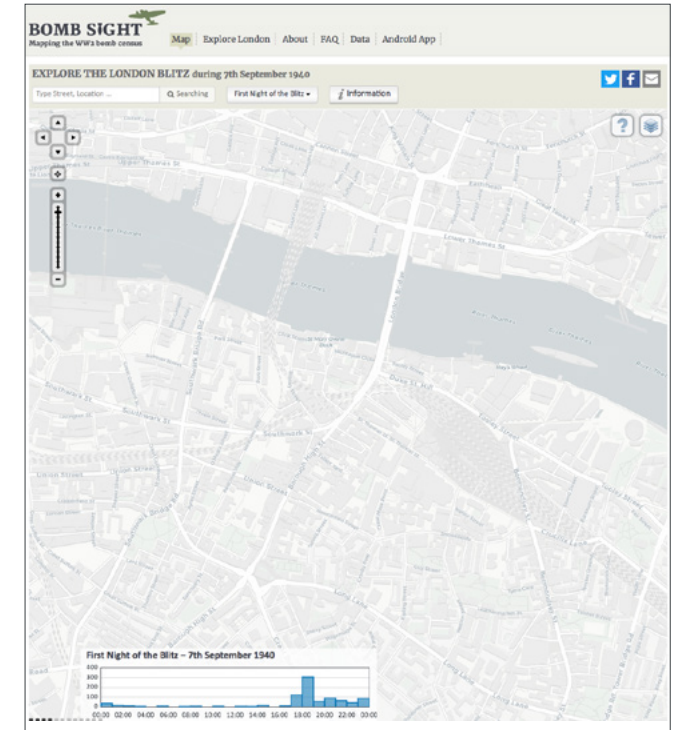
The following interactive mapping tools can help you look more closely at your local area:

Layers of London
www.layersoflondon.org



Bombsight

www.bombsight.org is also available as an Android app. You can use your GPS to find out where bombs fell in London using augmented reality!



OBSERVING AND IMPROVING LOCAL BUILDINGS

If you cannot leave your school site, you could search images of local buildings to assess for the activity on p59. Alternatively, use **Google's street view** to take a virtual trip around your neighbourhood.

www.google.co.uk/maps



BUILDING A SUSTAINABLE LONDON

Our *Explore* pages include web links to other sustainable buildings of note in London.

Since this pack was first published **Bloomberg HQ** is now considered London's most sustainable building. It scored top marks in the Building Research Establishment Environmental Assessment Method (BREEAM).

www.fosterandpartners.com/projects/bloomberg

Another building worth adding to the list is the highly energy efficient **20 Fenchurch Street**, otherwise known as the *Walkie-Talkie*:

www.vinoly.com/works/20-fenchurch-street/



INTERIOR OF THE BLOOMBERG LONDON OFFICE BUILDING AND ITS CENTRAL RAMP/STAIRCASE.

© The Wub 2018, Wikimedia Commons

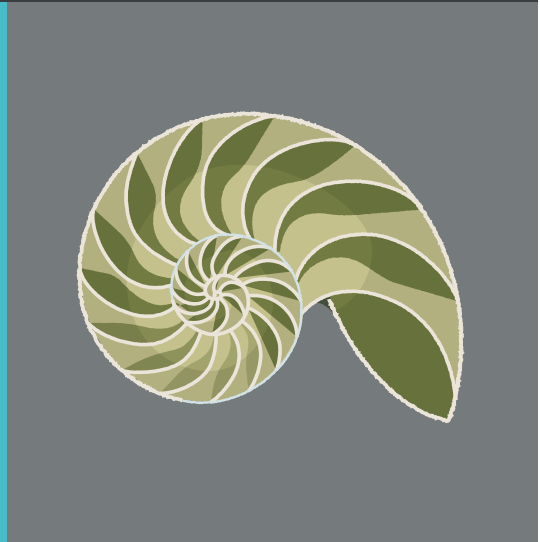
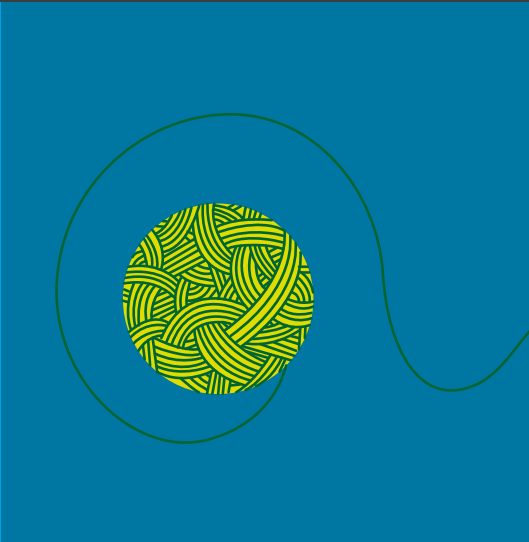


THE WALKIE-TALKIE (20 FENCHURCH STREET)

©Colin, Wikimedia Commons

WILD ABOUT LONDON

Download this unit at www.london.gov.uk/curriculum/KS2



PLANT PROTECTORS



Digital Image © Board of Trustees, RBG Kew

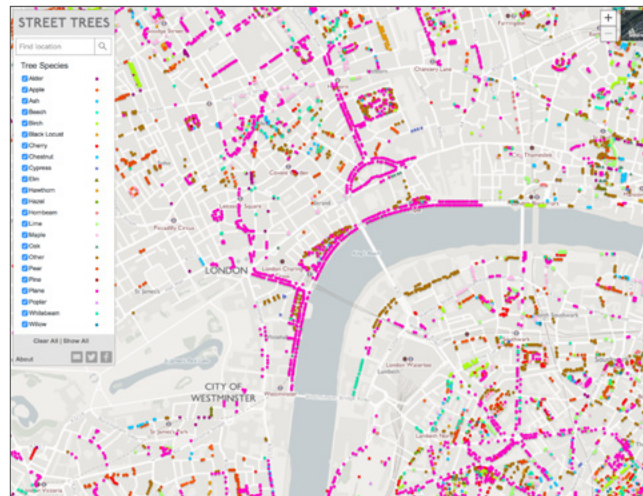
Kew Gardens has a wide variety of virtual tours you can engage with on their website, including a 360 tour of their iconic glass Temperate House:

www.kew.org/about-us/virtual-kew-wakehurst

You can use the following websites to investigate the position of London's many tree species:

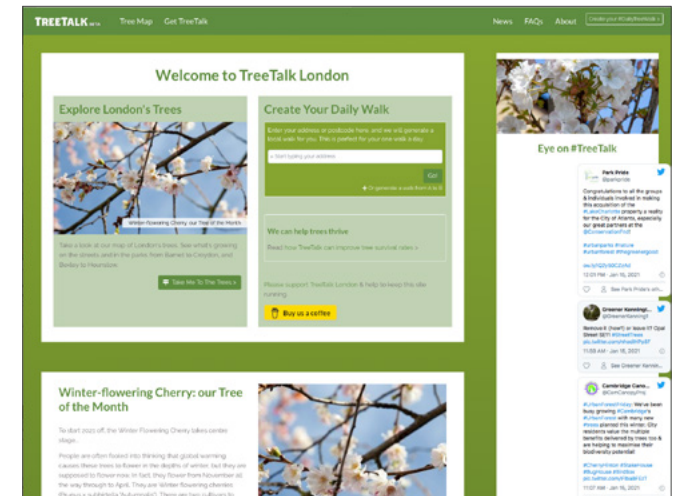
Street Trees

<https://maps.london.gov.uk/trees/>



Treetalk London

www.treetalk.co.uk



WATERWAYS AND WELLBEING



The **Canal & River Trust** has produced a range of 360 degree virtual adventure tours around their waterways. You can find out more on their YouTube channel.
www.youtube.com/user/canalrivertrust



FINDING OUT USING FIELDWORK



Field Studies Council is offering a range of day, digital and outreach packages so you can choose the best way for your students to experience FSC's fabulous outdoor learning.

Visit www.field-studies-council.org/digital-and-outreach/ to find out more.

A screenshot of the Field Studies Council website. The top navigation bar includes links for 'About Us', 'Courses and Experiences', 'Centres', 'Shop', 'Donate', and 'Contact Us'. The main image shows a group of people in a grassy field, some kneeling and some standing, engaged in a field study activity. The text 'Day, Digital and Outreach' is overlaid on the image. Below the image, there is a white box containing text: 'Not able to do your normal school trip or fieldwork? Looking for virtual field trips? We've got you covered with our day, digital and outreach packages so you can choose the best way for your students to experience FSC's fabulous outdoor learning.' and 'Select from a range of non-residential courses, virtual school trips, digital and/or outreach packages to find the delivery that's right for you. You can also combine virtual fieldwork resources with socially distanced, expert tutoring.'

LOVE YOUR LOCAL HABITATS

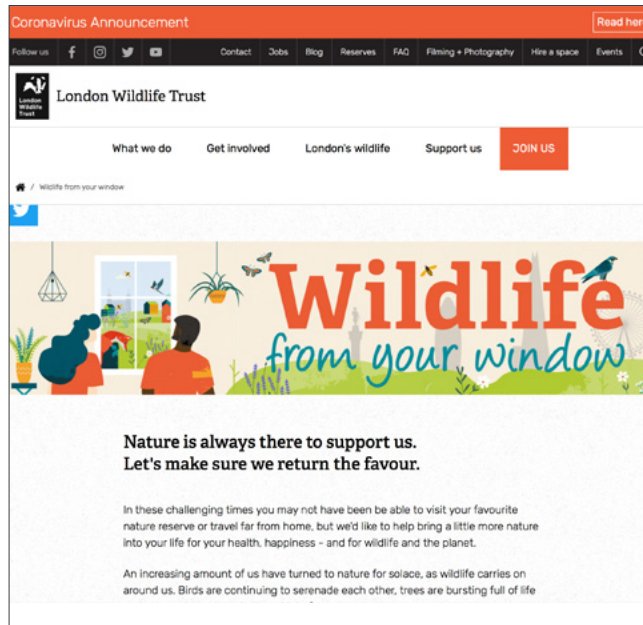


London Wildlife Trust is running a *Wildlife from your Window* project – details can be found here:

www.wildlondon.org.uk/wildlifefromyourwindow

An overview of how London Wildlife Trust works to conserve London's nature reserves can be found here:

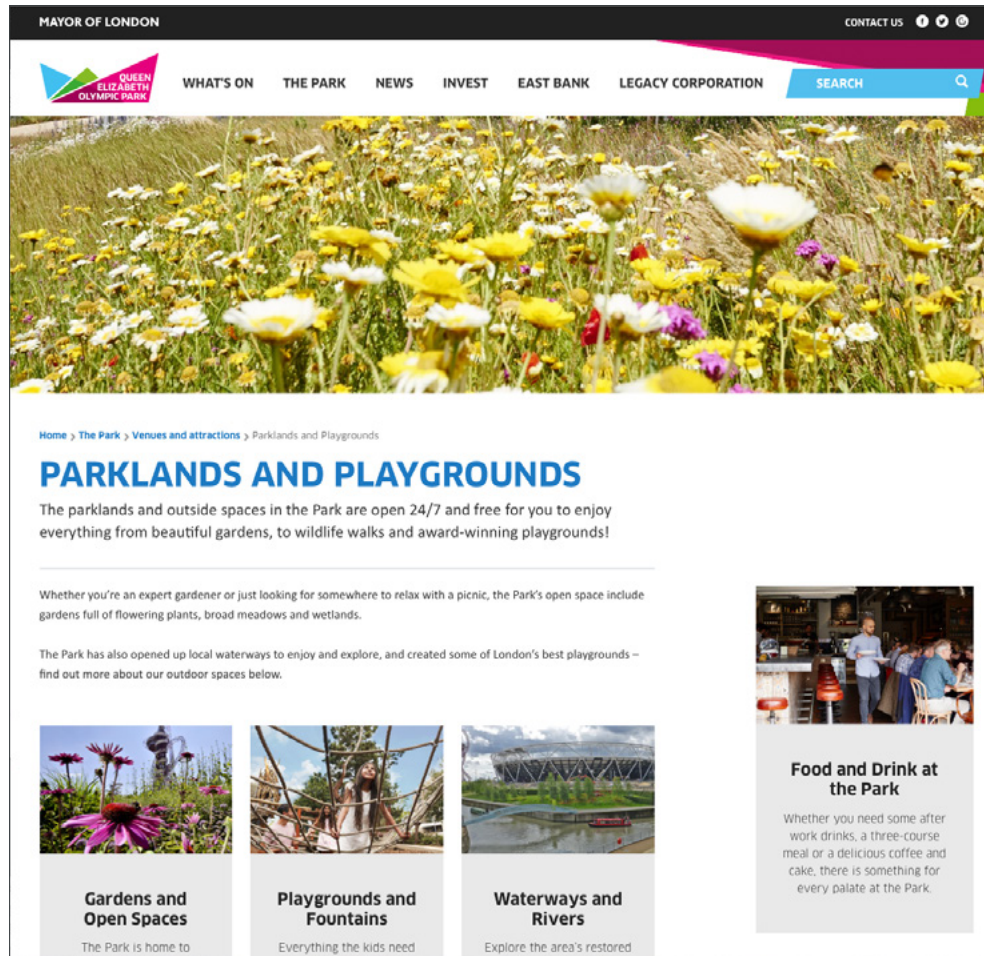
www.youtube.com/watch?v=uKD397CFQj8



PLANNING THE PERFECT PARK

Queen Elizabeth Olympic Park website hosts a wealth of videos, photography and information. Particularly relevant to this learning pack are the sections about its parklands, playground and waterways, found here:

www.queenelizabetholympicpark.co.uk/the-park/venues/parklands-and-playgrounds



The screenshot shows the website for the Queen Elizabeth Olympic Park, specifically the 'Parklands and Playgrounds' section. The page features a navigation bar with the Mayor of London logo and various menu items like 'WHAT'S ON', 'THE PARK', 'NEWS', 'INVEST', 'EAST BANK', and 'LEGACY CORPORATION'. A search bar is also present. The main content area includes a large image of a field of yellow and white flowers. Below this, there is a breadcrumb trail: 'Home > The Park > Venues and attractions > Parklands and Playgrounds'. The section title is 'PARKLANDS AND PLAYGROUNDS' in large blue letters. A sub-headline reads: 'The parklands and outside spaces in the Park are open 24/7 and free for you to enjoy everything from beautiful gardens, to wildlife walks and award-winning playgrounds!'. There are two paragraphs of text: 'Whether you're an expert gardener or just looking for somewhere to relax with a picnic, the Park's open space include gardens full of flowering plants, broad meadows and wetlands.' and 'The Park has also opened up local waterways to enjoy and explore, and created some of London's best playgrounds – find out more about our outdoor spaces below.' Below the text are three image-based links: 'Gardens and Open Spaces' (with a photo of purple flowers), 'Playgrounds and Fountains' (with a photo of a playground structure), and 'Waterways and Rivers' (with a photo of a canal). To the right of these links is a separate section titled 'Food and Drink at the Park' with a photo of a cafe interior and text: 'Whether you need some after work drinks, a three-course meal or a delicious coffee and cake, there is something for every palate at the Park.'

CREDITS

Written by Sarah Lewis
Design and illustration by **www.thirteen.co.uk**

© Greater London Authority
May 2021

Greater London Authority
City Hall, The Queen's Walk
London SE1 2AA

www.london.gov.uk

enquiries 020 7983 4100

minicom 020 7983 4458

