

MAYOR OF LONDON

---

LONDON CURRICULUM • FAMILY EXPLORER TRAIL

# WORLD OF WORK

PEOPLE LIKE ME  
BRING LONDON COMMUNITIES TO LIFE

Explore Brixton and find out about careers linked to community, art, culture and heritage



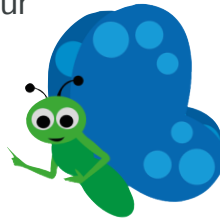
#LondonIsOpen



## What is the London Curriculum?

The London Curriculum is a fun new way of teaching young people about the city using London as a classroom. Schools in London are already enjoying our free learning resources; now with these trails, parents and carers can also join in.

This trail is one of five World of Work trails we've designed for families and schools to enjoy around London. The theme of this trail is 'Bring London Communities to Life' but we have included all kinds of activities and information about types of work that people like you might do when you are older. You will learn about jobs from the past, discover the work people do today, and imagine what work might be like in the future. We hope it will help you, your family and your schoolmates find out more about the world of work in this brilliant city, and have fun too!



Find out more at:

[www.london.gov.uk/world-of-work](http://www.london.gov.uk/world-of-work)

## The Mayor's #LondonIsOpen Campaign

#LondonIsOpen is a major campaign – launched by the Mayor, Sadiq Khan – to show that London is open for business, and open to the world. Many people from all over the world live and work here, contributing to every aspect of our city's life.

London is the best city in the world. We're entrepreneurial, international and outward looking. The key ingredient of our city's success has been the flow of brilliant ideas and talent from across the world. Our city is comfortable in its diversity, proud of its history and optimistic about its future.

People like you are part of this future.



## A message from the Mayor

"In London, who you are and where you come from should have no say in what you can achieve. The sky really is the limit and our city is filled with opportunities to learn and create. Today's young Londoners will be the scientists, entrepreneurs and designers of tomorrow. There's so much to discover here, so get out, get curious and find out what your future might hold."

- Sadiq Khan, Mayor of London

## Resources for teachers

There are loads more resources out there to inspire young Londoners to explore the world of work. We've got some suggestions for primary school teachers at:

[www.london.gov.uk/world-of-work](http://www.london.gov.uk/world-of-work)

## Safety on the way

We want you to have a relaxed, enjoyable time doing this trail together, so here are a few important things to remember. A suggested trail route is shown on the map.

- Please use pedestrian crossings when available. Where they are not, take extra care when crossing roads.
- In hot weather, remember to cover up and drink plenty of water.
- Be alert and watch your personal belongings.



## About this Family Explorer Trail

We suggest starting your trail at Brixton Underground Station. There are 10 main activity locations to visit along the route. There are also 2 optional extra activity stops at the end. These are shown in a different colour on the map at the back. The full walking route is about 3km (2 miles) and should take two to three hours to complete, but there's no time limit! We've pointed out a few places for picnics near to the route and there are public loos in Pope's Road and Brixton Village.

Estimated time (hours)



Walking distance (km)



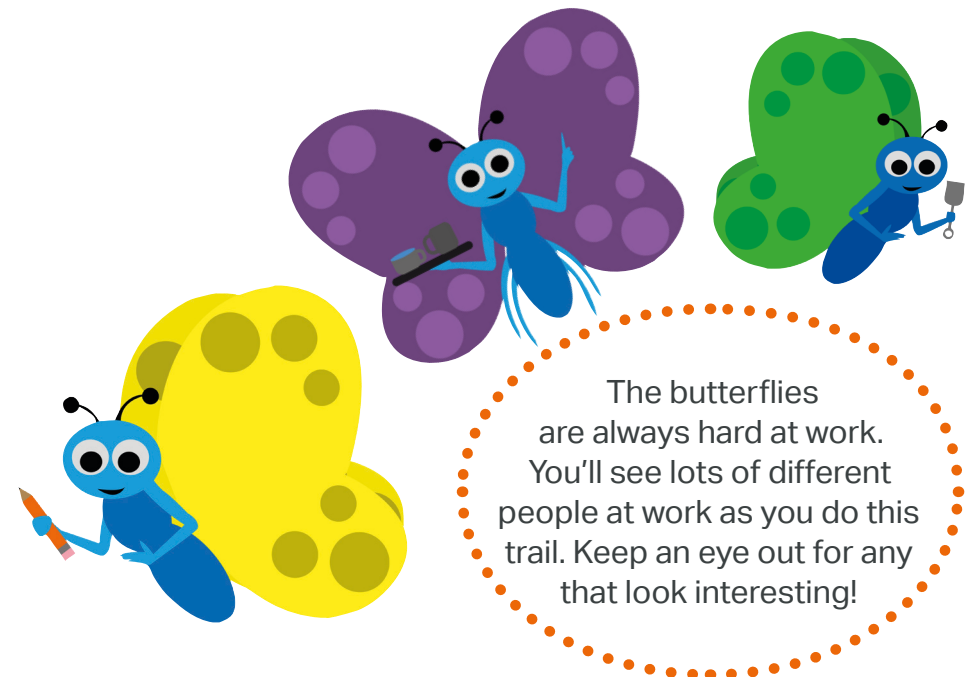
This trail starts and finishes in different places but we have recommended some bus services to get you back to the start, or you could walk back (15 to 20 minutes).

## You will need

- comfortable shoes and weather-appropriate clothing
- a pencil
- this book
- water to drink



Do as many or as few of the activities as you wish. We hope you like them all. Please tell us afterwards which activities you enjoyed most. Take our short survey at [www.london.gov.uk/world-of-work](http://www.london.gov.uk/world-of-work)



# A Skills Centre

Look at the words on the windows of the Skills Centre at The Queen. They are all to do with learning and having ambitions for the future.

Choose one word to complete each of the following sentences.

At school we ..... facts about the world.

When I am older, I hope to ..... many things.

A teacher can help us to ..... new subjects.

If we ..... hard we can develop skills in things that interest us.

I can ..... all kinds of ways to be successful in life!

Now it's your turn. Imagine you are the **training coordinator** at the Skills Centre. Check the Glossary of jobs at the back of the trail booklet if you're not sure what this is. You need to add one new word to the window display to encourage people to study new skills.

Which word would you add? .....



Scarlett, 10, loves acro dance, football and Scouts

# B Bellefields Mural

Cross over Stockwell Avenue and turn around to look at the Bellefields Mural.

As you explore Brixton, you'll see lots of murals and colourful street art. They all tell a story. Let's take a closer look at this one.



Tick the objects you can see on the mural.

- |       |                          |      |                          |                |                          |
|-------|--------------------------|------|--------------------------|----------------|--------------------------|
| birds | <input type="checkbox"/> | gate | <input type="checkbox"/> | flower         | <input type="checkbox"/> |
| bell  | <input type="checkbox"/> | fox  | <input type="checkbox"/> | pile of bricks | <input type="checkbox"/> |

Three of these objects are a play on the names of local places! Circle the objects above that represent Bellefield Road, Gateley Road and Brixton.



Can you see this man at the bottom of the mural? His name is Walter Tull. He was brought up in London and became a **professional footballer** for Tottenham Hotspur. He went on to fight as a **sergeant** in the British Army during the First World War and was killed in action.

## C Stockwell Skatepark

This skatepark was built in 1978 by Lorne Edwards, a skatepark designer. People travel from around the world to visit it.



This skatepark is a community resource that is free to use. Skateboarders young and old can practise their skills and techniques here. Unscramble the letters below to make a well-known saying.

T E C P A R C I   S K A M E   F E T C E R P

### Amateur or professional?

**Amateurs** take part in activities in their spare time for pleasure, not payment.

Do you think the drawings and paintings on the skatepark were made by amateur or professional artists? Tick your answer.

Amateur  Professional

This is one of the oldest skateparks in London. Its official name is Stockwell Skatepark but it also has a nickname - Brixton Beach!



## D Children at Play Mural

Wow! This mural is huge. And so high up! I wonder how it was painted? There must have been lots of different workers helping out.



Imagine you are an **art critic**.

This mural is called Children at Play. The artist was asked to create something that celebrates children of different backgrounds, race and religion playing together in harmony.

Do you think the artist achieved this? Yes  No

Do you like the mural? Think of three things you like about the mural, and one thing you would change.

I like ..... & .....

I would change .....

because .....



Viola, 9, really good at swimming, climbing and drawing

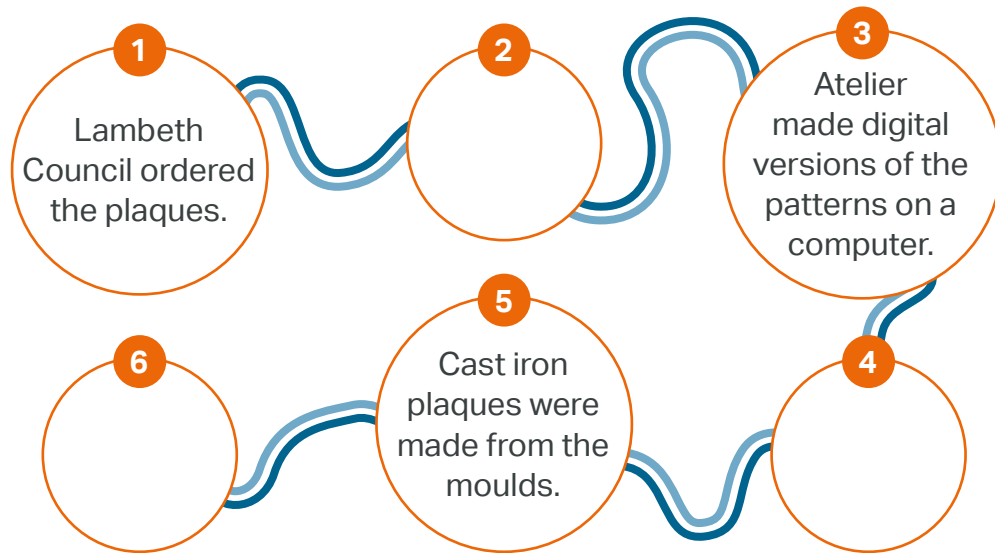
My dream job is to be a trapeze artist. If not, I'd like to be an artist, a piano player or an actor.

# Canterbury Square

The 'stepping stones' across the square show the route of the Effra, one of London's ancient rivers. Today it runs underground! **Step along the plaques in the direction you think the Effra is flowing.**

These plaques were designed by a local Lambeth artist called Faranak. Her drawings were made into plaques by a company called Atelier. 'Atelier' is the French word for 'workshop'.

Here is the sequence of events in the production of the plaques. Some activities are missing. Write A, B or C in the empty spaces to show the correct order of events.



- A Traditional sand-cast moulds were made from the patterns.
- B Lambeth Council installed the plaques in the ground.
- C Faranak drew water patterns by hand.

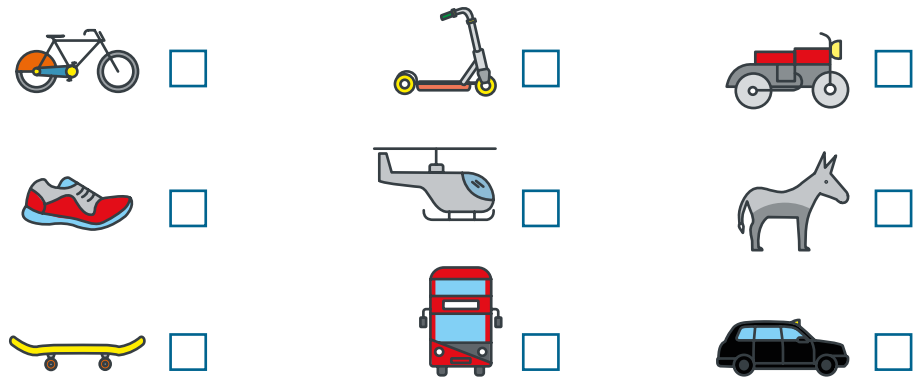
## Commuter suburb!

Find the information board on the wall of Canterbury Court Flats. Use the words on the sign to fill in the blanks below.

Brixton really started to grow after the arrival of the  
 \_\_\_ A \_\_\_ L \_\_\_ A \_\_\_ in 1862.

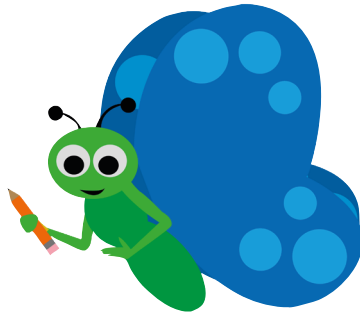
House builders built homes for \_\_\_ O \_\_\_ M \_\_\_ T \_\_\_ R \_\_\_ who would live here in the village but travel into the city to work.

Look around the square. Here are some ways people might get to work from their homes in Brixton. Put a tick next to any that you spot in the next few minutes.



Some jobs need physical skills, like strength or a sense of balance! Let's test your balance. Place a coin on one of the plaques. Can you stand on one leg on the same plaque and bend down to pick it up?

# Brixton Village

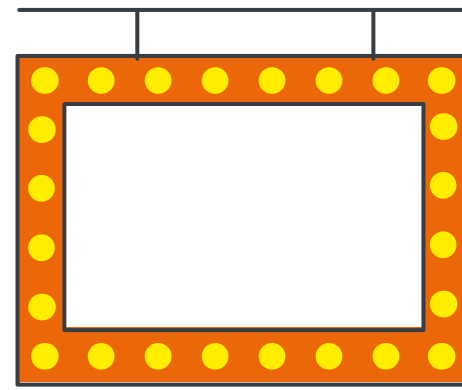
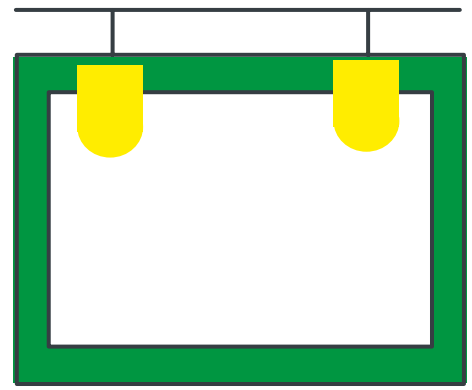
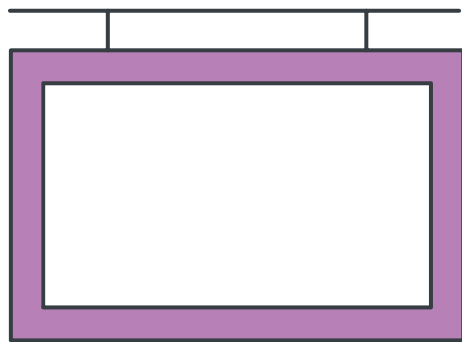


Welcome to the village within a city!

The word 'village' shows that Brixton is a small, close community. People who live here call themselves Brixtonians!

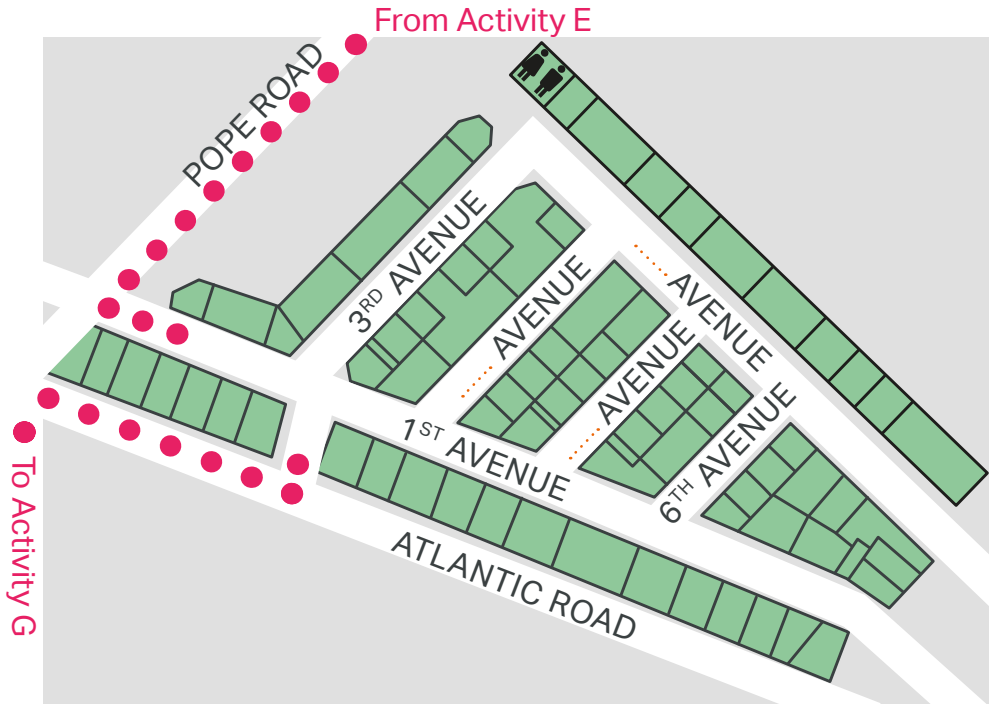
In the past, when some people couldn't read, shop signs had pictures of their products instead of shop names. Today pictures can add colour and character!

Imagine you are a **signmaker**. Walk along 3rd Avenue to find three different shops or cafés selling food or goods from Africa or the Caribbean. Draw a picture of one of the things they sell to complete these three signs.



The market's **operations director** needs your help. She needs an **operations assistant** to update the market records. Use the plan to complete the numbers of all six Avenues.

She also needs help creating an advert. The advert must showcase the range of products available from different countries. Choose ONE shop or café from each Avenue to include in the advert. Mark its location with an X on the plan below and write the name of the business in the correct space below.



Ave:	Business name:	Ave:	Business name:
1st	.....	4th	.....
2nd	.....	5th	.....
3rd	.....	6th	.....

# Electric Avenue

## Community currency

Electric Avenue and Electric Lane were the first market streets in Britain to be lit by electricity. Electric Avenue was once so popular it was called the 'Oxford Street of South London'!

Pick a spot to stand at along Electric Avenue. How many uses of electricity can you see or hear? Look up and down!

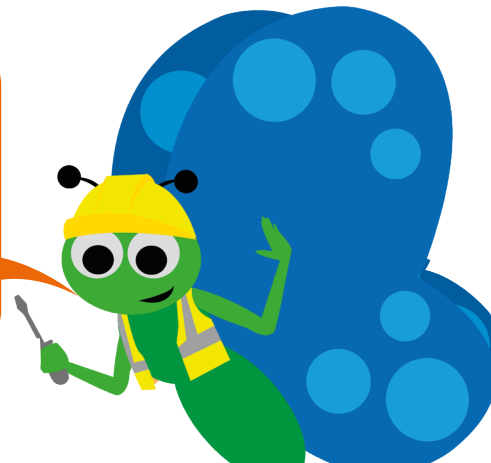
Make a tally. 

I can see or hear electricity being used for:

ENTERTAINMENT	
INFORMATION	
LIGHTING	
WORK TOOLS	
OTHER	

Use the glossary to find out what work an **electrician** and an **electrical engineer** does.

There are lots of industries where electrical engineers work. Look up to see aeroplanes passing overhead. As an electrical engineer, you could design the electrical system for one!



Local shopkeepers and business people accept payment in the Brixton Pound. It helps local businesses by keeping money moving within the local community.

Find the entrance to Market Row from Electric Lane. Just inside there is a vending machine where you can buy Brixton Pounds.

**B£** The people whose faces are on the Brixton Pound notes are all famous Brixtonians. They include Olive Morris who was a community leader and campaigner for women's rights.

Imagine that the vending machine is full of notes in every row. If you pressed the following button combinations, how many Brixton Pounds would you have in total?

$$\boxed{B} \boxed{0} + \boxed{C} \boxed{6} = \boxed{B£}$$

$$\boxed{C} \boxed{4} + \boxed{B} \boxed{2} + \boxed{D} \boxed{6} = \boxed{B£}$$

You need to buy 35 Brixton Pounds. Which combination of six buttons could you press to get the exact amount?

$$\begin{array}{cc} \square & \square \\ + & \\ \square & \square \\ + & \\ \square & \square \\ = & \\ \boxed{B£35} & \end{array}$$



Oluwatomi, 11, really good at Maths, computing and making cushions



**Name and age:**

Keisha , 45



**What is your job and what do you do?**

I'm a **senior project officer**. I work with charities to support young people to volunteer. This helps them to gain skills and experience for working life and achieve their career aspirations.

**What do you get paid a year?**

Between £30,000 and £50,000.

**What other jobs have you had?**

I was a project co-ordinator for a charity and a teacher in a sixth form college. I worked as a shop assistant during my studies.

**Why do you love your job?**

Working with lots of different people and organisations.  
Creating new project ideas and then making them happen.  
Thinking through and solving problems.

**What were your favourite subjects at school?**

Art, English, Maths and French.

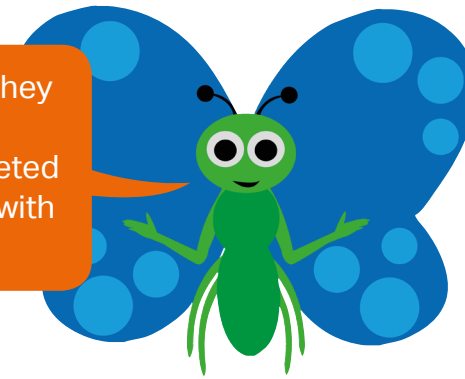
**What was your dream job as a child?**

I wanted a job where I was helping others, making a difference in society.

**What advice would you give to a young person?**

Find something you are passionate about in your community (or in the world). Think about which subjects you enjoy at school. Combine these to try to find a career that will fit with who you are as a person.

These four pages can be pulled out! They contain fun activities for you to do at home or at school after you've completed the trail. You can also read interviews with Londoners who love their jobs!



## Community spirit!

All the jobs on the trail bring London's communities to life, from supporting local businesses, to creating public art and green spaces, to conserving local history.

One way you can help your local community is to become a **volunteer**. Perhaps you already do voluntary work as a Scout or for another organisation? It's a lot of fun and helps you learn and practise skills you can use at school and in the future!

One of these important skills is **teamwork**.

Imagine that your teacher has asked for volunteers to help at a sports event she is organising. List three examples of things you do that show her you work well as part of a team.

1. ....

2. ....

3. ....



Leo, 7, loves Maths, Drama and rugby

I'm really good at teamwork so I'd like to be a professional rugby player.

**Name and age:**

Devon, 36



**What do you do?**

I help fundraise and create partnerships between businesses, companies, local community groups and creative practitioners to deliver a creative festival in Brixton.

**How much do you get paid a year?**

Between £15,000 and £30,000.

**What other jobs have you had?**

I have worked in marketing and for a design agency.

**Why do you love your job?**

Meeting new and interesting people and helping improve the lives of others even in a small way. Helping create better places to live and visit. Being involved in creative projects.

**What do you love about working in London?**

The concentration of creativity and mix of people and cultures. You learn so much.

**What were your favourite subjects at school?**

I loved Drama, English, Art and History.

**What was your dream job as a child?**

I wanted to be an actor.

**What advice would you give to a young person?**

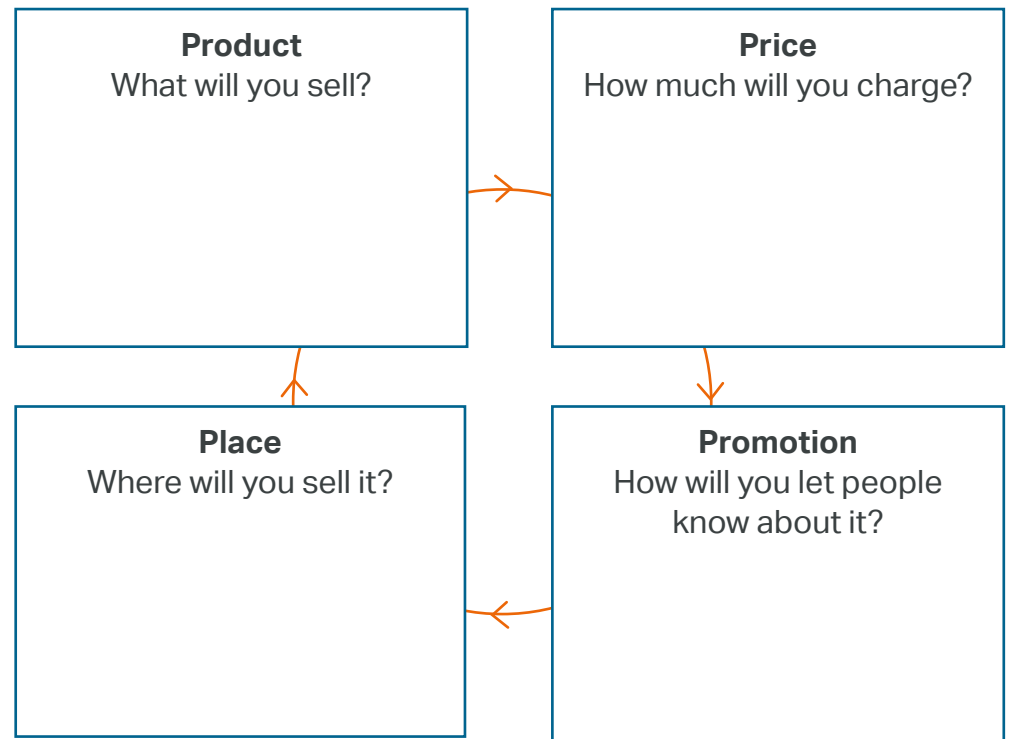
Work out what you are good at, what you enjoy doing and what sectors you are interested in. Then think about what kind of job you might want.

# Marketing the mill

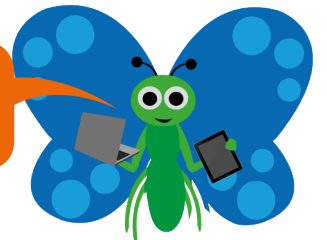
Did you visit Brixton Windmill? The windmill sells the flour it produces to raise money.

Working with your family or friends, think of something else that the windmill could sell. It might be a physical product or an experience!

Think about the four Ps of marketing: product, price, promotion and place. Complete the table below for your product.



If you enjoyed this activity, you might like a job as a **marketing manager** in the future!



**Name and age:**

Ines, 38



**What is your job and what do you do?**

I'm a **Project Co-ordinator**. I work with other cities to help figure out how to make our cities greener and nicer to live in.

**How much do you get paid a year?**

Between £30,000 and £50,000.

**What other jobs have you had?**

I used to be a ballet dancer, then went to university when I was 28 and studied Geography.

**Why do you love your job?**

I love working with other people, getting out and about, feeling like I am contributing something positive to London.

**What do you love about working in London?**

Working in London is great because it's made up of many different little towns, all with their own character and identity.

**What were your favourite subjects at school?**

English, Drama and History.

**What was your dream job as a child?**

I wanted to be a ballet dancer.

**What inspired you to do this job?**

Going back to university when I was older and learning about cities.

**What advice would you give a young person?**

Develop a broad set of skills, and learn to work well with others.

# Improving air quality

Do you remember visiting Brixton Orchard?

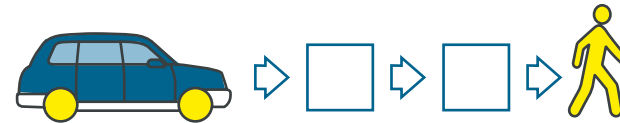
Green spaces like this in London help reduce pollution.

Trees absorb carbon produced by vehicles and release oxygen back into the air.

Complete the two diagrams below.

Write the letter of the label into the correct box. You will need to use one letter twice. Add your own arrows to the second diagram.

**Area with no trees**



**Area with trees**



**A** People breathe cleaner air

**B** Trees absorb poisonous fumes

**C** People breathe polluted air

**D** Traffic creates pollution

**E** Trees release oxygen

If you are interested in finding new ways to reduce pollution you might like to become an **environmental scientist** in the future!

### Name and age:

Rachelle , 34



### What is your job and what do you do?

I am in charge of learning at a historic site. I look after a team who welcome and provide activities for children and young people visiting with their families and teachers.

### What do you get paid a year?

Between £15,000 and £30,000.

### When do you work?

I share a full-time job with another worker. So she works some days and I work others!

### What other jobs have you had?

Lots of jobs in learning teams in museums, galleries and science centres. And I was a volunteer for a long time before starting paid work.

### Why do you love your job?

Learning new things, working with my team and the public. Hearing stories from visitors. Offering new and exciting things to the visitors. Having lots of fun and making friends!

### What were your favourite subjects at school?

History and English.

### What advice would you give to a young person?

It's never too late to learn something new. If you don't like the job you're doing you can change it, you're not stuck in it forever!

## Practise your skills!

Skills are things you are good at.

**Vocational skills** are skills you only need for certain jobs.

**Transferable skills** are skills you need for a lot of jobs, and to do well at school.

Look at the skills below. Write a V in the box beside it if you think it is a vocational skill and a T if you think it is a transferable one.

<input type="checkbox"/>	listening carefully	English
<input type="checkbox"/>	making detailed drawings	Maths
<input type="checkbox"/>	solving problems	Science
<input type="checkbox"/>	communicating in writing	Art and design
<input type="checkbox"/>	planning a task	History
<input type="checkbox"/>	not giving up	Geography

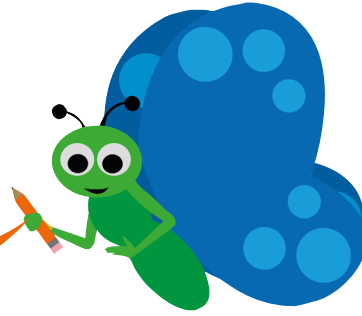
Now draw a line from a skill to a school subject that helps you to learn or to practise that skill. You can draw more than one line from each subject!

Which other school subjects help you practise these skills?

Does this page now look a bit of a mess with all the lines you've drawn? All the skills you practise at school will help you fly high in the future!



# H Brixton Speaks



Look at all the words on the wall!

The words and phrases are all parts of real Brixtonian conversations. Some of the words are written to show how they were spoken.

Look along the 3rd line of writing. Find the word 'troof'. This is usually spelt TRUTH. The person who said it says the letters 'th' as an 'f' sound. How do you say 'truth'?

Find the 'spoken spellings' for these other words:

2nd line: give me = .....

4th line: bothered = .....

5th line: what's up = .....

Can you spot two more words that are spelt as they are spoken?

..... th line: ..... = .....

..... th line: ..... = .....

Imagine you are a **journalist** creating a new Brixton Speaks artwork. How easy is it to write down exactly what people say? Try and listen to someone nearby talking. Write down something they say.

.....

# I Windrush Square I

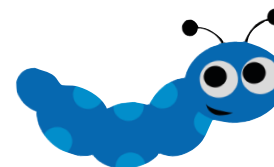
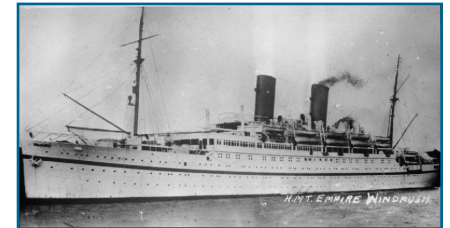
How did Windrush Square get its name?

Search the part of the square in front of the Black Cultural Archives to find three engravings in the paving stones. Use these to complete the gaps in the sentence below:

In \_\_\_\_\_ (year) a ship called the \_\_\_\_\_ Windrush sailed from The C \_\_\_\_\_ r \_\_\_\_\_ n to T \_\_\_\_\_ b \_\_\_\_\_.

Who are the Windrush Generation?

The Windrush brought the first of many groups of people from the Caribbean who helped rebuild London after the Second World War. They are known as the Windrush Generation. The huge contribution made by them and their descendants is celebrated every year on Windrush Day. Many settled in Brixton, playing a key role in creating the community's diverse and vibrant identity.



My dream job is to be a writer or illustrator.

Nina, 8, really good at Art, Maths, skipping and eating

# Windrush Square II

## Mapping the journey

The ship that brought the Windrush Generation to the UK made several stops. A **cartographer** is a person who draws maps. They also need to check that the information on the map is correct. Let's help the cartographer by checking some numbers.



## Complete the map

First, search the square to find the objects listed and complete the missing numbers.

stone laid by Henry Irving: May  1  94

Sharpeville stone:   March 1   0

stone mile marker: Royal Exchange  miles

War Memorial - African and Caribbean pilots: 191  - 194

Now transfer the numbers in the shapes above onto the map. This is the order in which the ship stopped at each location.

Starting at number 1, draw the route the ship took.

### Who was on board?

Use your maths skills to find out!

50% of passengers were from Jamaica.  
30% of passengers found new homes in Brixton.

If 300 of the passengers found new homes in Brixton, how many passengers were there

a) in total?

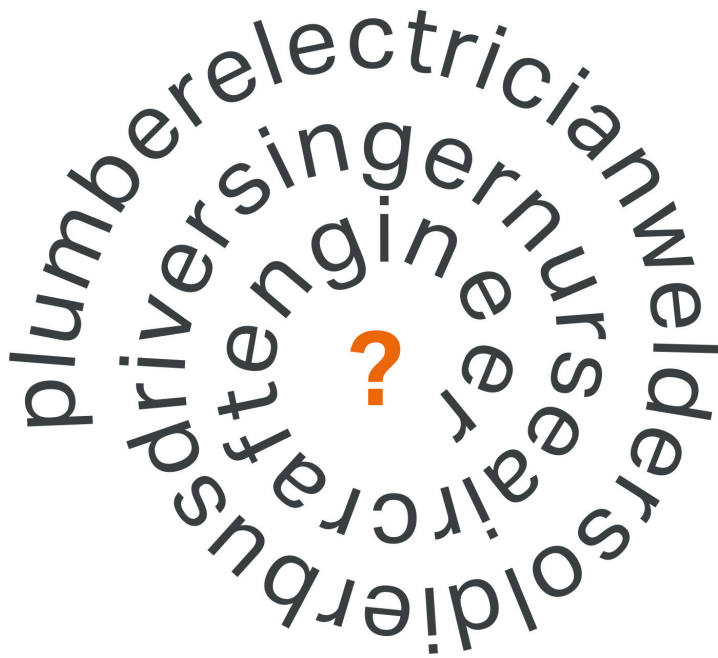
b) from Jamaica?

# Windrush Square III

What jobs did the Windrush Generation do when they arrived in London?

Follow the wordsnake to find some of the jobs.

How many jobs can you find?



## Black Cultural Archives

**Note: this building is not open on Sundays and Mondays. If it is open today, go inside and do this task.**

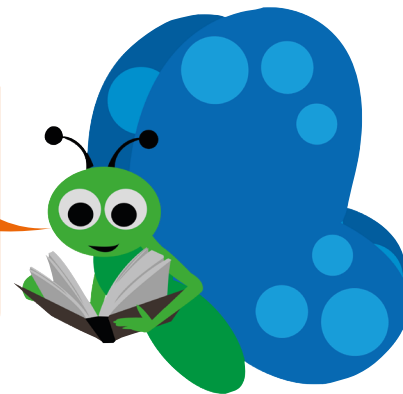
A display behind the reception desk shows a 'word cloud'. These words describe the inspirational community leaders who emerged from the Windrush Generation in Brixton and across London.

What skills do you need to be a good leader?

Choose two words from the cloud or invent two of your own. Add them to the diagram below.

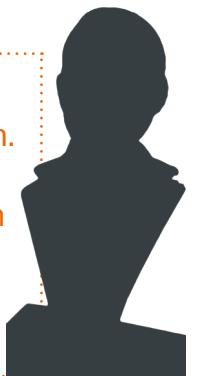


Can you see the library in the square? A library is a fantastic community resource! Books are free to borrow for local residents who are members. Lots of other community activities take place here too.



### Can you find the bronze bust of Len Garrison?

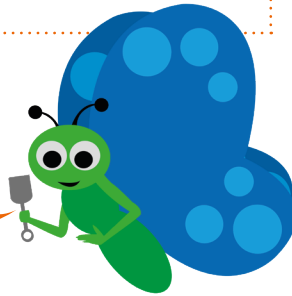
Lenford Garrison was one of the Windrush Generation. He was born in Jamaica and moved to London as a boy to join his parents. He was only 10 years old when he made the long 8000 mile journey. He became a community leader, educationalist and historian and co-founded the Black Cultural Archives.



# J Brixton Orchard

**Did you know?** In January 2017 an area not far from this location was identified as the most polluted in London! The Brixton Orchard was created as a new green space with 35 fruit trees and hundreds of hedges. Some of the money came from the Mayor of London's Air Quality Fund.

These trees will be cared for by local apprentices who will be specially trained as part of the Brixton Orchard partnership.



Imagine you are an **apprentice arboriculturist**. You have been given three tasks to complete.

Originally, 35 trees were planted here. How many can you see? .....

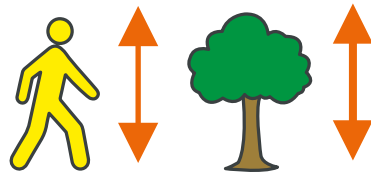
Look at the tree labels.

How many different types of fruit can you see? .....

Are the trees growing well? Estimate the height of the tallest tree.

(HINT: Ask an adult with you how tall they are in metres and centimetres. Use that as a guide to help you.)

The tallest tree is approximately



..... m ..... cm

# K Rush Common

## Rush Common Map



Look at the map at the bottom end of Rush Common. Can you work out where you are on the map? Which way is north? Look around you and point north.

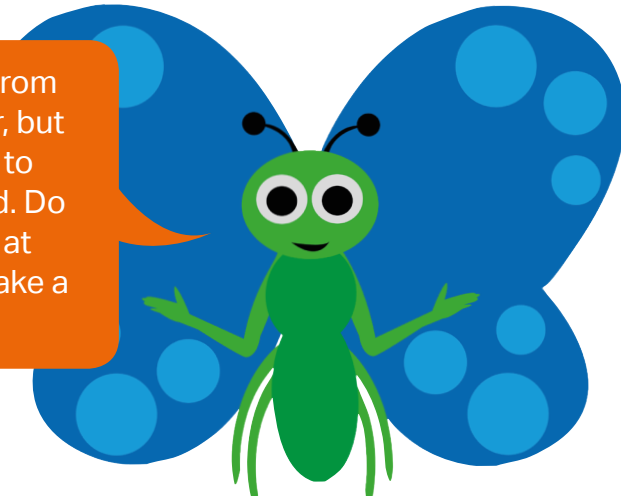
Cross Brixton Water Lane very carefully to look at the map of the St Matthews Estate. Can you work out where you are on this map?

Let's compare the two maps.

Choose and tick one map for each question:

Which map is	RUSH COMMON	ST MATTHEWS ESTATE
CLEARER	<input type="checkbox"/>	<input type="checkbox"/>
MORE COLOURFUL	<input type="checkbox"/>	<input type="checkbox"/>
MORE DETAILED	<input type="checkbox"/>	<input type="checkbox"/>
EASIER TO READ	<input type="checkbox"/>	<input type="checkbox"/>
MORE USEFUL	<input type="checkbox"/>	<input type="checkbox"/>

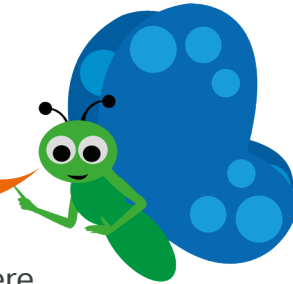
We butterflies simply flutter from place to place through the air, but humans need to follow maps to get from A to B on the ground. Do you think you would be good at drawing maps? If so, you'd make a great **cartographer**.





# Brixton Windmill I

Brixton Windmill is run by **volunteers** as a charity on behalf of the community. Look around - can you see any volunteers today?

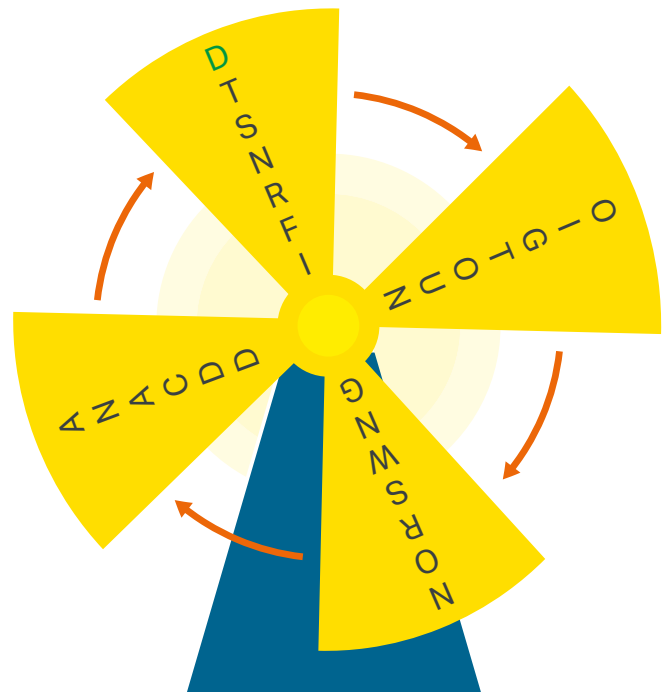


The windmill needs money to keep it working. There are lots of ways a charity can raise money. Three of them are hidden in the sails you see here. Start at the green D to find them. Follow the direction of the arrows and write each letter in turn in the spaces below.

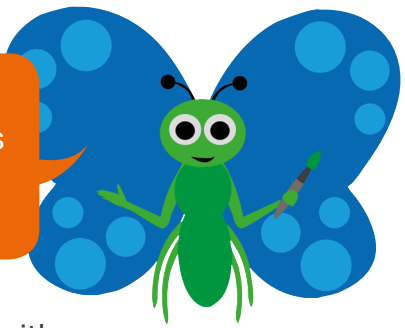
D \_ \_ \_ \_ \_ S

G \_ \_ \_ \_ S

C \_ \_ \_ \_ \_ \_ \_ \_ \_ \_ G



Look at the new 2019 Education Centre here at Brixton Windmill. This has been partly paid for through fundraising by the local community.

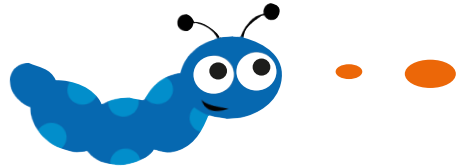


The **museum learning facilitator** works with families and school groups at the windmill. They have created a history worksheet to help visitors find out more about the windmill. Test one of the activities below!

### The timeline mural

The history of the windmill inspired some local artists to make a timeline mural on the wall of the playground. Search along the timeline to match the words below to the correct year.

- |                           |         |
|---------------------------|---------|
| USED FOR STORAGE --       | -> 1968 |
| MILLING WITH STEAM --     | -> 2010 |
| OPENED TO THE PUBLIC --   | -> 1864 |
| AN EDUCATION PROGRAMME -- | -> 1902 |

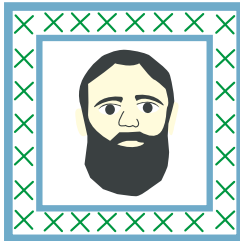
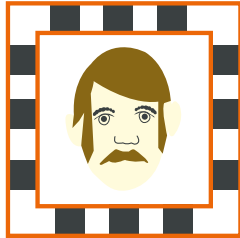


I'd like to be a primary school teacher or work for a museum as a teacher.

Charlotte, 7, really good at monkey bars, making friends and being kind

# Brixton Windmill II

There are some family portraits on this wall! Find each of the people shown below and write their name below their portrait.



These people worked in the original windmill as millers, builders and engineers. Today there are lots of different jobs for volunteers to do.

TOUR GUIDE

MILLER

BAKER

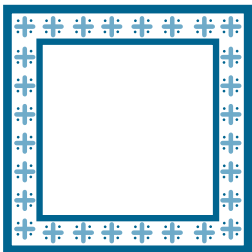
GARDENER

EVENTS  
OFFICER

PRESS  
OFFICER

FUNDRAISING  
MANAGER

BUILDING  
MANAGER



If you were a volunteer at the windmill, which of these jobs would you do? In the last empty space, draw your own portrait and write your chosen job underneath.

(YOUR NAME)

(YOUR JOB)

As you've explored Brixton you've probably come across some jobs you have never heard of! Here's a handy explanation of some of the more unfamiliar job names.

## Glossary of jobs

**Art critic:** writes reviews of works of art.

**Apprentice:** learns a job from a skilled worker.

**Arboriculturalist:** plants and cares for trees.

**Electrician:** fits, services and mends electrical equipment.

**Electrical engineer:** designs, builds and maintains electrical systems, machinery and equipment.

**Environmental scientist:** studies the effects of human activities on the environment and tries to find solutions to problems.

**Fundraising manager:** responsible for raising money through donations, grants and events.

**Journalist:** writes for newspapers, magazines or news programmes.

**Marketing manager:** plans how to promote products or brands.

**Miller:** operates a mill that grinds grain into flour.

**Museum learning facilitator:** plans and delivers educational activities at museums and historic sites.

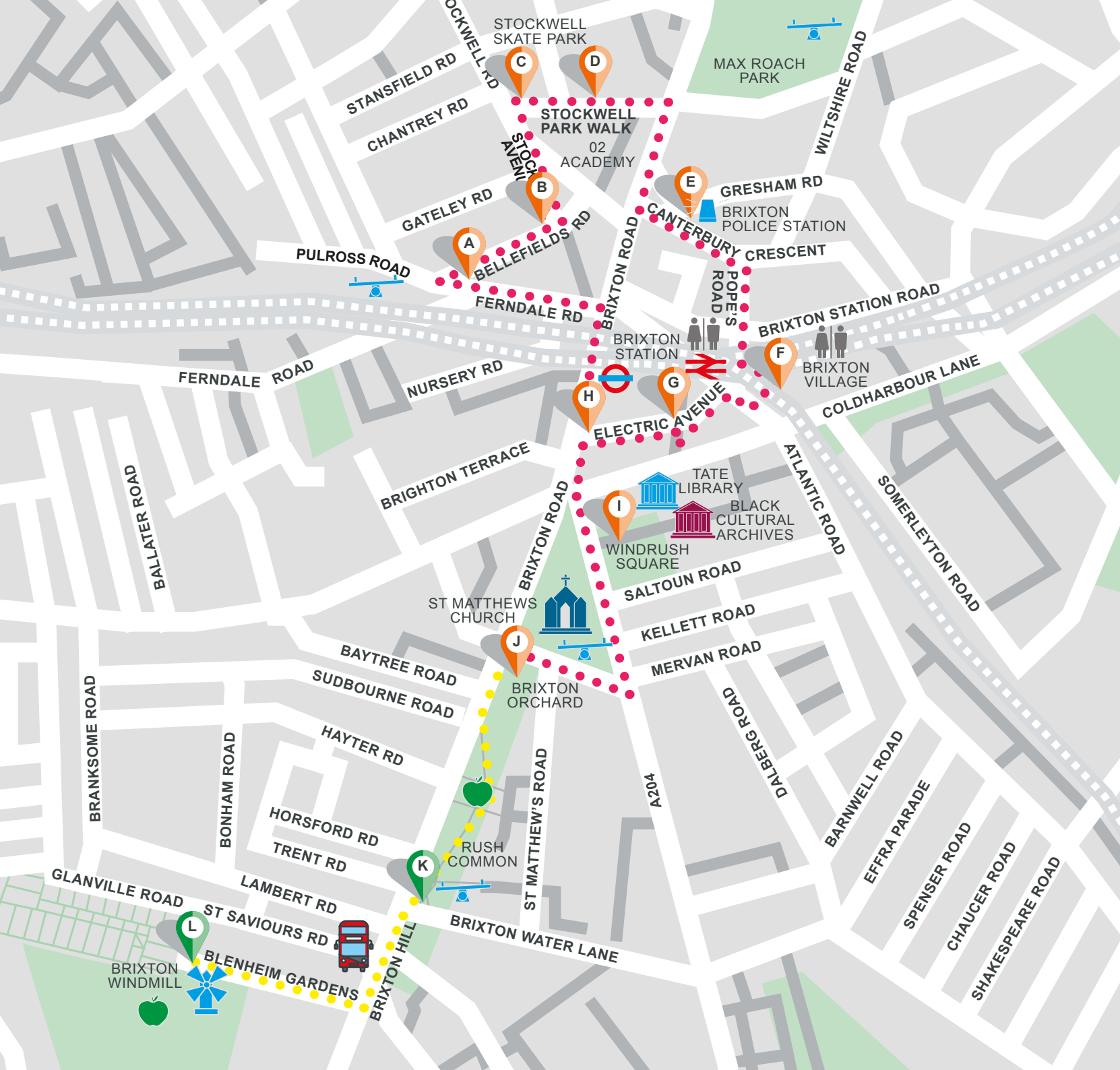
**Operations director:** responsible for ensuring that a business or organisation runs smoothly.

**Press officer:** promotes their organisation to the media, including newspapers and social media sites.

**Signmaker:** designs, makes and fits signs.

**Training coordinator:** organises staff training in an organisation.

**Volunteer:** works without being paid to contribute to the community and gain new skills and experience.



**TRAIL KEY**

-  Public toilets
-  Picnic spot
-  Playground
-  Trail route
-  Optional extra route

**ACTIVITY STOPS**

- A Skills Centre
- B Bellefields Mural
- C Stockwell Skate Park
- D Children at Play Mural
- E Canterbury Square
- F Brixton Village
- G Electric Avenue
- H Brixton Speaks
- I Windrush Square
- J Brixton Orchard

**OPTIONAL STOPS**

- K Rush Common
- L Brixton Windmill

**BUSES FROM  
BLENHEIM GARDENS**  
45, 59, 109, 118, 133, 159, 250,  
333, N109, N133

## Spotlight career

### Binki Taylor



Binki Taylor is passionate about involving people in community projects. She was one of the first business owners to move into Brixton Village and is joint Chair of the Brixton Pound Board. As Director of the Brixton Design Trail she helps local people work together on exciting projects that bring their community to life.

#### What I love about my job

It's fun and creative. I love working with a great team of passionate people, working in a community I love and shaping the world around us. I love bringing joy, raising curiosity, empowering individuals and communities.

#### Other jobs I've had

I've owned and run a shop and a bar and worked as a personal development coach.

#### My favourite subject at school

I loved English Literature.

#### My dream job as a child

I wanted to be a lawyer, a social worker or a party planner.

#### What inspired me to do this job

The community and people around me.

#### Advice I'd give to a young person

Be curious, follow your heart and be inspired by those around you. Think big and then bigger. Remember the only thing limiting you is you. Allow yourself to make mistakes. Don't be afraid to ask questions and not to know everything.

## Find out more

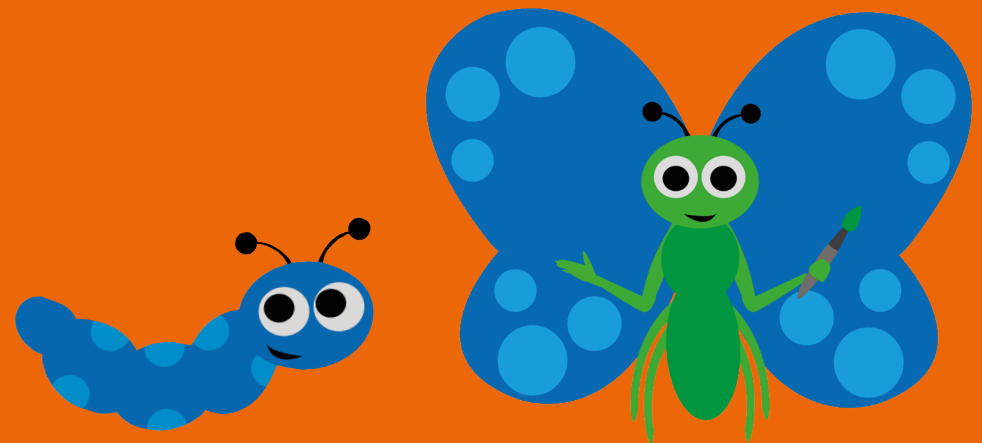
There are loads of other places to visit in London to find out more about some of the jobs in this trail, and our other World of Work trails. Visit our website to see some suggestions for places to go to inspire you!

[www.london.gov.uk/world-of-work](http://www.london.gov.uk/world-of-work)

## Tell us what you think

We'd love your feedback to help us plan more family trails in the future. Please take our short survey at:

[www.london.gov.uk/world-of-work](http://www.london.gov.uk/world-of-work)



---

## Answers

C) Practice makes perfect E) C,A,B I) a) 1000, b) 500 L) donations, grants, crowdfunding. Pullout 3) D, C; D, B; E, A Pullout 4) T, V, T, T, T, T