An aerial view of a city map, likely London, with a green tint. The map shows a network of streets and a large body of water. Several people are scattered across the map, appearing to walk or stand on the streets. The text is overlaid on the map.

HOW THE LONDON ASSEMBLY WORKS FOR YOU

An Easy Read Guide

LONDONASSEMBLY

Contents

- What is the London Assembly? [3](#)
- A map of London Assembly Members [5](#)
- Who are the Members of the London Assembly? [6](#)
- What does the London Assembly do? [12](#)
- Can I watch meetings of the London Assembly? [14](#)
- What does the London Assembly not deal with? [15](#)
- What is the London Youth Assembly? [16](#)
- The Mayor of London [17](#)
- Key Word Glossary [18](#)
- How to get in touch with your Local Assembly Member [19](#)



What is the London Assembly?



The London Assembly meets at City Hall in London. Members of the London Assembly are elected. This means people in London get to decide which Assembly Members they would like to:

- hold the Mayor of London to account
- work to make London better
- explore a range of issues important to Londoners
- make decisions for Londoners and London

Assembly Members can ask questions of the Mayor of London at Mayor's Question Time.

Assembly Members also take part in other meetings to talk about topics important to London and Londoners.

There are 14 Assembly Members who represent different areas across London. There are also 11 other Assembly Members. They represent the whole of London. Assembly Members are elected by you and other Londoners every 4 years.

The next election will be held in **May 2024**.

Instructions on how to register to vote can be found at londonelects.org.uk or you can send an email to info@londonelects.org.uk.

There are 4 different political groups represented in the Assembly. A party, or political party, is an organised group who want people to vote for them.



Labour Group



City Hall Conservatives

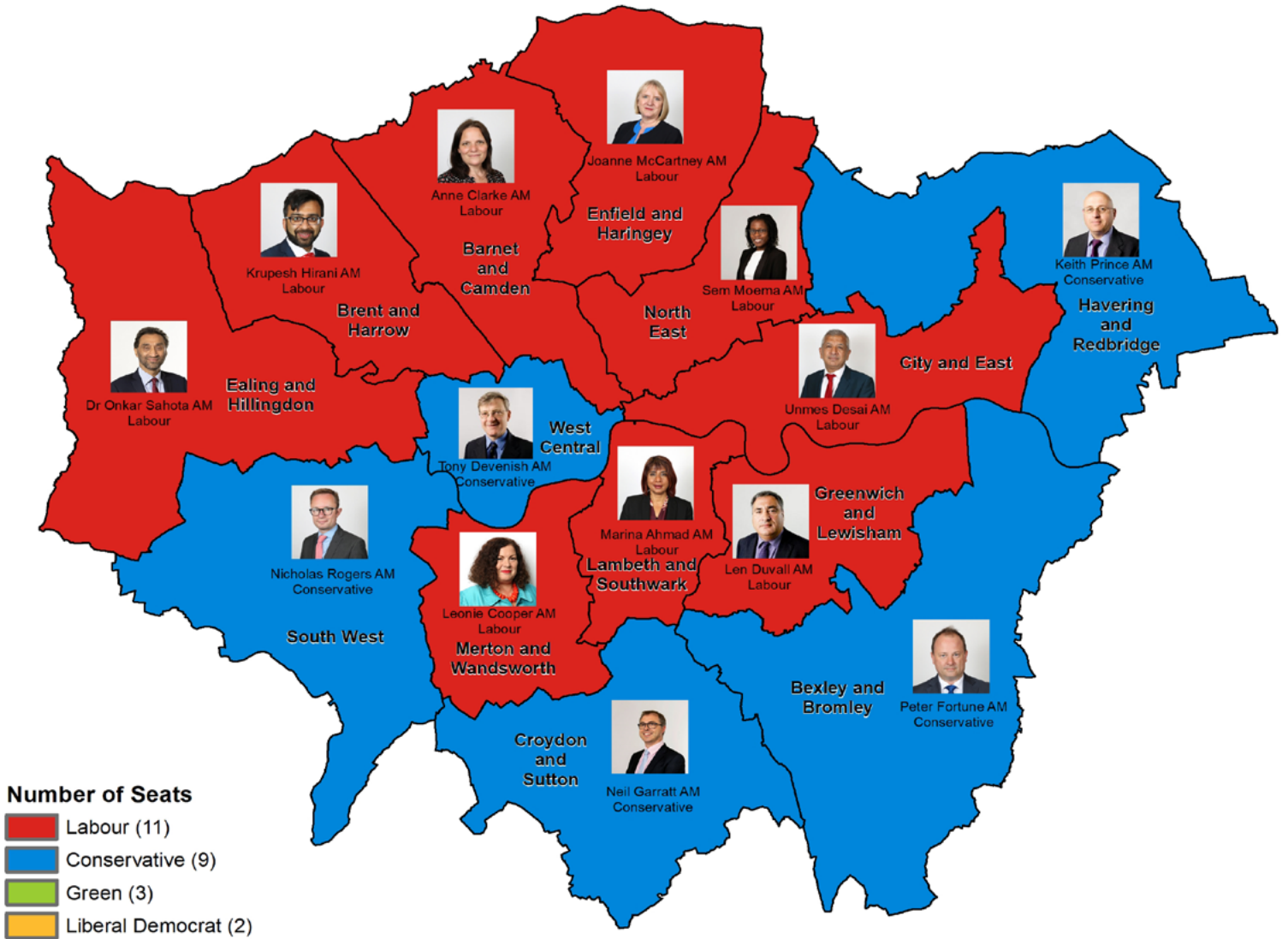


City Hall Greens



Liberal Democrats

A map of London Assembly Members



Londonwide Assembly Members

City Hall Conservatives Members

Susan Hall AM Shaun Bailey AM Andrew Boff AM Emma Best AM

Labour Group Members

Elly Baker AM Sakina Sheikh AM

City Hall Greens Members

Siân Berry AM Caroline Russell AM Zack Polanski AM

Liberal Democrat Members

Caroline Pidgeon AM Hinari Bokhari AM

Who are the Members of the London Assembly?

Below is a list of Assembly Members elected in 2021 and the political groups they belong to:



Andrew Boff – City Hall Conservatives
Chairman of the London Assembly



The Chair is a person who is in charge of the London Assembly meetings.
They make sure that everything is in order.



Dr Onkar Sahota – Labour Group
Deputy Chair of the London Assembly
Chair of the Health Committee

Labour Group Members



Marina Ahmad
Chair of the Economy Committee



Elly Baker



Anne Clarke
Chair of the Fire, Resilience and
Emergency Planning Committee



Léonie Cooper
Chair of the Environment Committee



Unmesh Desai



Len Duvall OBE



Krupesh Hirani



Joanne McCartney



Sem Moema



Sakina Sheikh
Chair of the Planning and
Regeneration Committee

City Hall Conservatives Members



Shaun Bailey
Chair of the Housing Committee



Emma Best



Tony Devenish



Peter Fortune

City Hall Conservatives Members



Neil Garratt
Chairman of the Budget and
Performance Committee



Susan Hall



Nick Rogers
Chairman the Transport Committee

Liberal Democrat Members



Hina Bokhari



Caroline Pidgeon MBE

City Hall Greens Members



Siân Berry



Zack Polanski



Caroline Russell
Chair of the Police and Crime Committee

What does the London Assembly do?

The London Assembly holds committee meetings to discuss issues that affect London. Committees are small groups of Assembly Members.

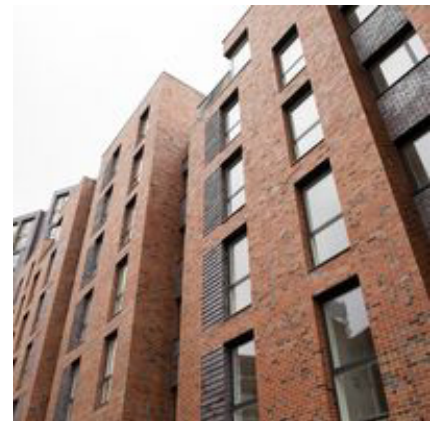
Below are a few examples of what Assembly Members might discuss at committee meetings and the areas where they might make recommendations to the Mayor of London.



The **Transport Committee** looks at how the Mayor is carrying out his Transport plans in London.

Assembly Members talk about transport in London and tell the Mayor and other guests how to make it better. They recently looked at whether transport in London is accessible to everyone.

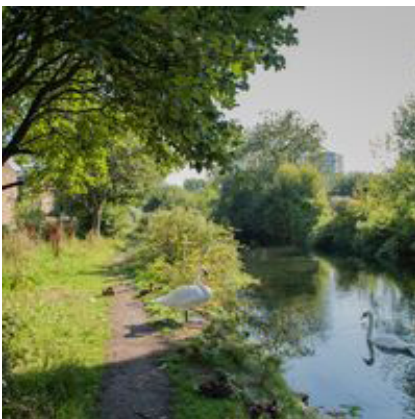
The **Housing Committee** looks at housing and homelessness so that all Londoners can live in a decent and affordable home. They have asked questions to the people in charge of Housing Associations, on topics like fire safety and homelessness.





The **Health Committee** looks at the health and wellbeing of Londoners. They also look at the Mayor's plan to tackle unfair differences in health and make London a healthier, fairer city.

The **Police and Crime Committee** looks at the work of the Mayor's Office for Policing and Crime. Assembly Members talk about a range of policing topics including violent crime and victim support.



The **Environment Committee** looks at what measures could be taken to help improve the quality of life for Londoners and investigates topics ranging from airport expansion and burst water mains, to noise from the Night Tube and the environmental impacts of plastic water bottles.



The **Fire, Resilience and Emergency Planning (FREP) Committee** focuses on keeping London safe.

It also looks at draft documents and ideas put forward by the London Fire Commissioner.

The **Budget and Performance Committee** looks at the Mayor's budget plans for the next financial year.



Can I watch meetings of the London Assembly?

Committee meetings broadcast live, online.

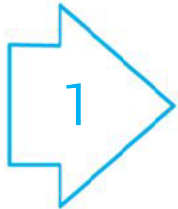
You are welcome to watch meetings live or after they have taken place on the London Assembly YouTube channel or on our website:

london.gov.uk/media-centre/london-assembly

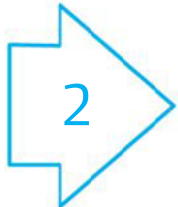


What does the London Assembly not deal with?

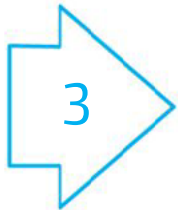
The London Assembly cannot help with:



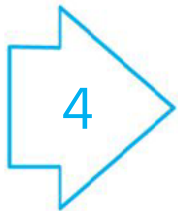
Problems with your neighbours, the people you live next to



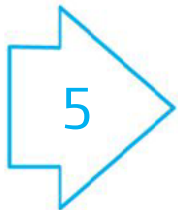
Problems with your employer, the people you work for



Problems with your family



Companies that sold you something that does not work



Your council tax, disability allowance, rent, benefits or pension

What is the London Youth Assembly?

The [London Youth Assembly](#) is made up of young people across London to create positive change for people like them. Their meetings focus on matters of importance to young Londoners.



Members of the London Youth Assembly are aged 11 to 19, or up to 25 if you have a disability.

Each borough is responsible for electing or selecting a 'London Youth Assembly Member' and a 'Deputy London Youth Assembly Member' for the year.



The Mayor of London

It is the Mayor's job to make London a great place for people to live, visit and work.

The current Mayor of London is:



Sadiq Khan

His responsibilities include:

- London's transport, planning and building
- London's environment, businesses and housing
- Decreasing the level of crime in London
- Improving the lives of young Londoners
- Working with different people and organisations to help make London a better and safer city

The Mayor is voted in every 4 years by the people who live in London, at the same time as Assembly Members.

Key Word Glossary

Assembly Member - Members of the London Assembly are elected. This means people in London vote for them.

Chair - a person who is in charge of a meeting. They make sure that everything is in order.

Committees - are small groups of Assembly Members.

MBE - Member of the Order of the British Empire, this is the third highest award given to people by The King to recognise the positive impact they have made in their area of work.

OBE - Officer of the Order of the British Empire, this is the second highest award given to people by The King to recognise the positive impact they have made in their area of work.

MP - A Member of Parliament is elected by people within a local area to represent their views in Parliament.

Party, or political party - is an organised group who want people to vote for them.

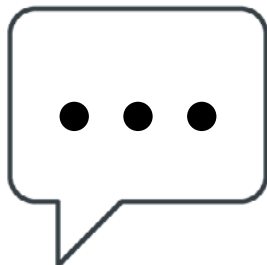
How to get in touch with your Local Assembly Member

If you would like to get in touch with your local Assembly Member, then please see below:



Visit our website:

london.gov.uk/people/assembly



Social Media:

@LondonAssembly



Write a letter:

City Hall
Kamal Chunchie Way
London
E16 1ZE



Phone us:

020 7983 4000